



Chipsmall Limited consists of a professional team with an average of over 10 year of expertise in the distribution of electronic components. Based in Hongkong, we have already established firm and mutual-benefit business relationships with customers from,Europe,America and south Asia,supplying obsolete and hard-to-find components to meet their specific needs.

With the principle of “Quality Parts,Customers Priority,Honest Operation,and Considerate Service”,our business mainly focus on the distribution of electronic components. Line cards we deal with include Microchip,ALPS,ROHM,Xilinx,Pulse,ON,Everlight and Freescale. Main products comprise IC,Modules,Potentiometer,IC Socket,Relay,Connector.Our parts cover such applications as commercial,industrial, and automotives areas.

We are looking forward to setting up business relationship with you and hope to provide you with the best service and solution. Let us make a better world for our industry!



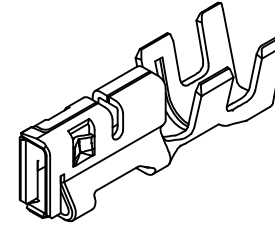
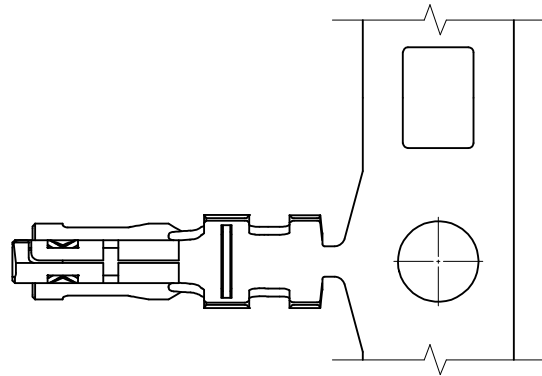
## Contact us

Tel: +86-755-8981 8866 Fax: +86-755-8427 6832

Email & Skype: info@chipsmall.com Web: www.chipsmall.com

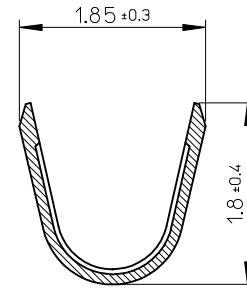
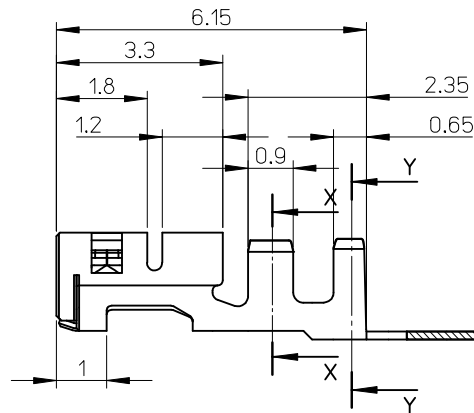
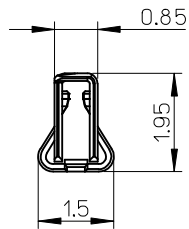
Address: A1208, Overseas Decoration Building, #122 Zhenhua RD., Futian, Shenzhen, China



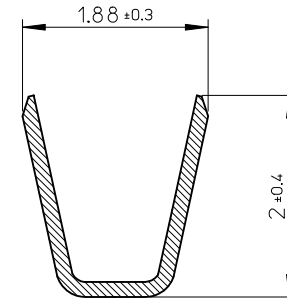


NOTES

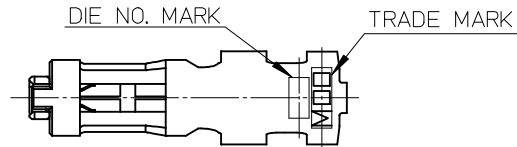
1. 使用材料: 銅合金、錫メッキ(t=0.15)  
MATERIAL: COPPER ALLOY, PRE-TINNED (t=0.15)
2. 適合ハウジング: 505151シリーズ  
APPLICABLE HOUSING: 505151 SERIES
3. ELV及のRoHS適合  
ELV AND ROHS COMPLIANT
4. アプリケーション仕様書(コネクタ取扱説明書): AS-505151-001/-002  
APPLICATION SPECIFICATION (CONNECTOR MANUAL):
5. 製品仕様書: PS-505151-001  
PRODUCT SPECIFICATION:
6. 圧着視覚教材(品質要領書): ATS-57427-0000  
CRIMPING VISUAL AID:



SECTION X-X  
SCALE 20:1



SECTION Y-Y  
SCALE 20:1



5051538000	CHAIN
MATERIAL NO.	FORM

RELEASED EC NO: J2015-0035 DRWN: MIKEDA01 2014/06/30 CHKD: KASAKAWA 2014/07/11 APPR: NUKITA 2014/07/15 0	DESCRIPTION GENERAL TOLERANCES (UNLESS SPECIFIED) 10 UNDER ± 0.2 10 OVER 30 UNDER ± 0.25 30 OVER ± 0.3 ANGULAR ± 3 ° DRAFT WHERE APPLICABLE MUST REMAIN WITHIN DIMENSIONS	DIMENSION STYLE MM ONLY	SCALE 10:1	DESIGN UNITS METRIC	THIRD ANGLE PROJECTION	
		DRAWN BY MIKEDA01	DATE 2014/03/03	TITLE 2.0MM PITCH W/B CONN. REC TERMINAL		
		CHECKED BY KASAKAWA	DATE 2014/03/04	MATERIAL NO. SEE CHART		
		APPROVED BY NUKITA	DATE 2014/03/28	DOCUMENT NO. SD-505153-001	SHEET NO. 1 OF 1	

WIRE RANGE  
AWG: #22, #24

INSULATION RANGE  
Ø1.5 MAX.



THIS DRAWING CONTAINS INFORMATION THAT IS PROPRIETARY TO MOLEX INCORPORATED AND SHOULD NOT BE USED WITHOUT WRITTEN PERMISSION