



Chipsmall Limited consists of a professional team with an average of over 10 year of expertise in the distribution of electronic components. Based in Hongkong, we have already established firm and mutual-benefit business relationships with customers from,Europe,America and south Asia,supplying obsolete and hard-to-find components to meet their specific needs.

With the principle of “Quality Parts,Customers Priority,Honest Operation,and Considerate Service”,our business mainly focus on the distribution of electronic components. Line cards we deal with include Microchip,ALPS,ROHM,Xilinx,Pulse,ON,Everlight and Freescale. Main products comprise IC,Modules,Potentiometer,IC Socket,Relay,Connector.Our parts cover such applications as commercial,industrial, and automotives areas.

We are looking forward to setting up business relationship with you and hope to provide you with the best service and solution. Let us make a better world for our industry!



## Contact us

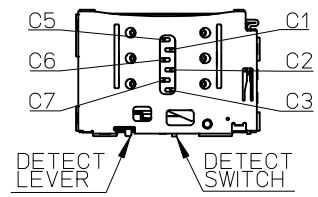
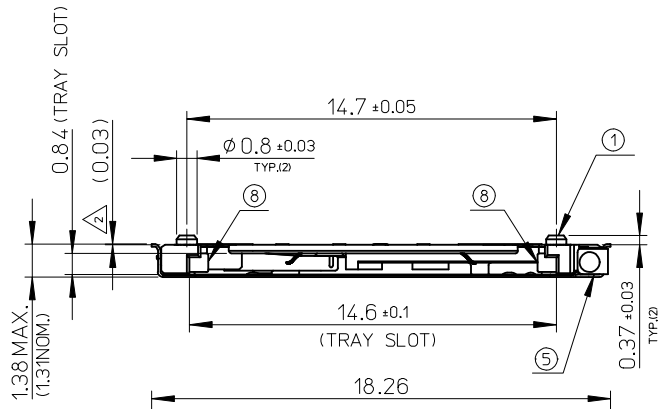
Tel: +86-755-8981 8866 Fax: +86-755-8427 6832

Email & Skype: info@chipsmall.com Web: www.chipsmall.com

Address: A1208, Overseas Decoration Building, #122 Zhenhua RD., Futian, Shenzhen, China



10 9 8 7 6 5 4 3 2 1



C1: Vcc  
 C2: RST  
 C3: CLK  
 C5: GND  
 C6: Vpp  
 C7: I/O

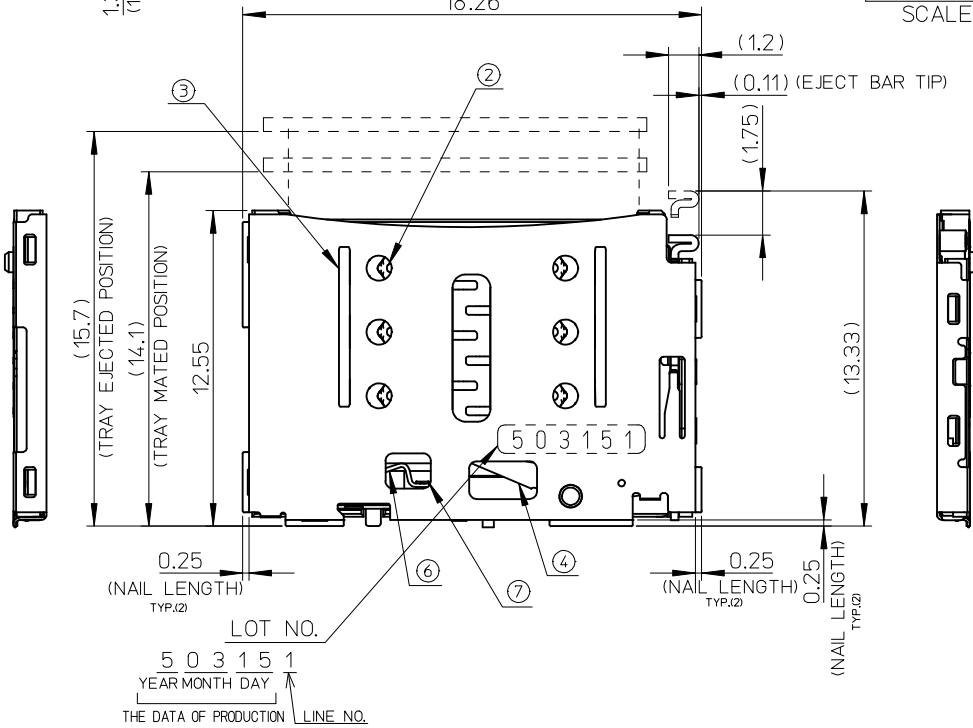
PIN ASIGNMENT  
 SCALE 2:1

No.	NAME	MATERIAL	FINISH
①	HOUSING	LIQUID CRYSTAL POLYMER GLASS FILLED, UL94 V-0 BLACK	N/A
②	TERMINAL	COPPER ALLOY	CONTACT AREA: GOLD PLATING TAIL AREA: GOLD PLATING UNDERPLATE: NICKEL OVERALL
③	SHELL	STAINLESS STEEL	TAIL AREA: GOLD PLATING UNDERPLATE: NICKEL OVERALL
④	EJECT LEVER	STAINLESS STEEL	N/A
⑤	EJECT BAR	STAINLESS STEEL	N/A
⑥	DETECT LEVER	COPPER ALLOY	CONTACT AREA: GOLD PLATING TAIL AREA: GOLD PLATING UNDERPLATE: NICKEL OVERALL
⑦	DETECT SWITCH	COPPER ALLOY	CONTACT AREA: GOLD PLATING TAIL AREA: GOLD PLATING UNDERPLATE: NICKEL OVERALL
⑧	HOOK	STAINLESS STEEL	N/A

NOTES :

1. TERMINAL AND NAIL COPLANARITY TO BE 0.1mm MAXIMUM. (FROM GAUGE PLATE)
- ② STAND OFF DIMENSION (STAND OFF DIMENSION IS INCLUDED IN THE CONNECTOR TOTAL HEIGHT)
3. DETECT SWITCH FUNCTION
 

NO TRAY	CLOSE
TRAY EJECTED POSITION	CLOSE
TRAY MATED POSITION	OPEN
- ③ PATTERN KEEP OUT AREA DIMENSION
5. (DIMENSION) : REFERENCE VALUE (IT IS A NOT A MANAGEMENT DIMENSION)
6. ELV & ROHS COMPLIANT.
- ④ GND RECOMMENDED PATTERN.



LOT NO.  
 5 0 3 1 5 1  
 YEAR MONTH DAY  
 THE DATA OF PRODUCTION LINE NO.

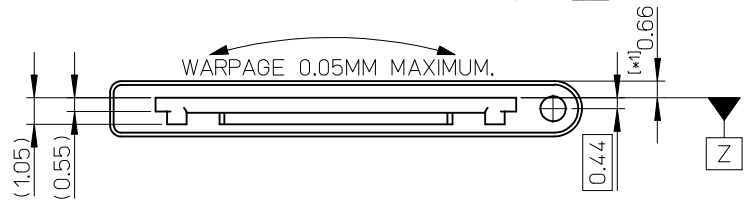
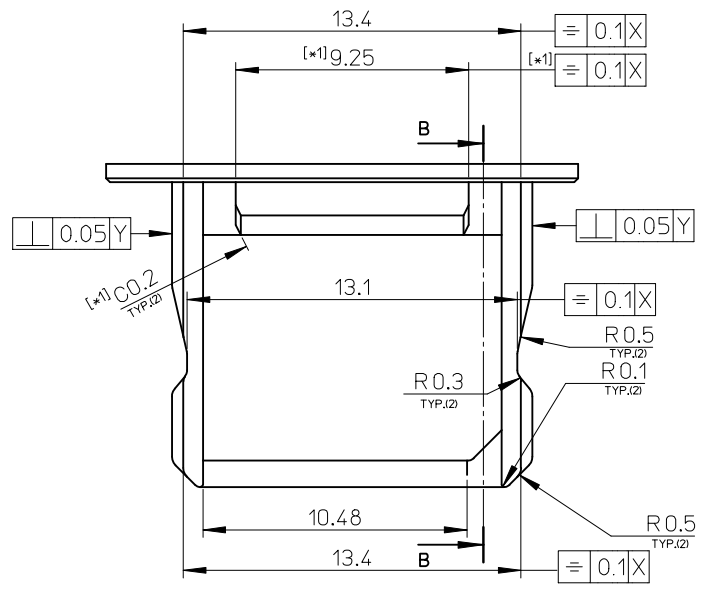
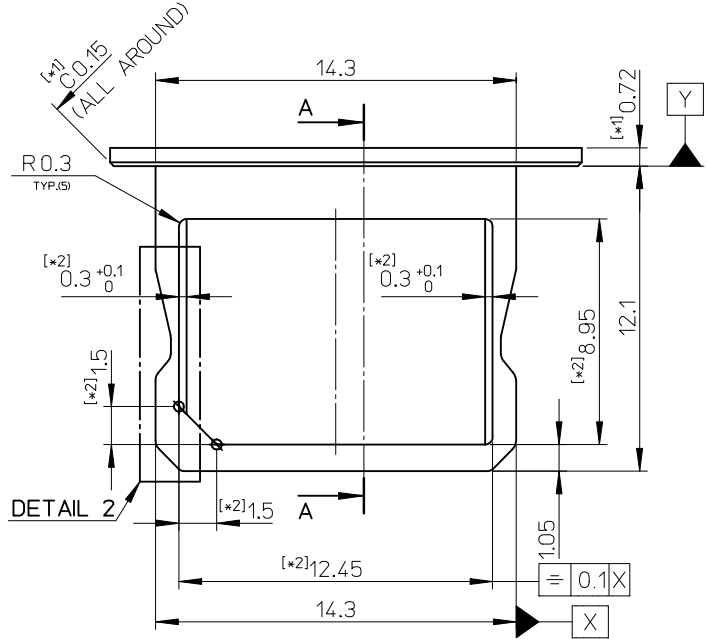
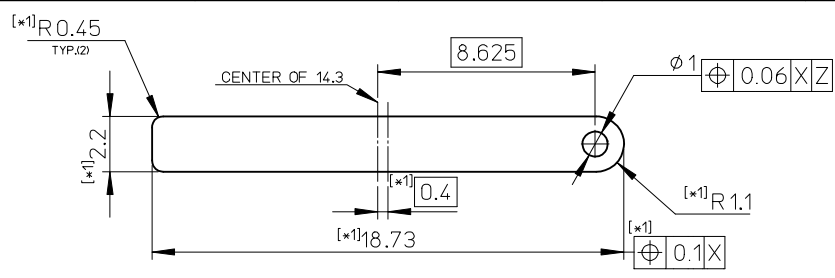


5052950691	6
EMBOSSED PACKAGE	CIRCUITS
ORDER NO.	
CONNECTOR SERIES No. 505295****	

REVISED EC NO: J2015-1539 DRWN:KOMURAKAMI 2015/05/20 CHKD:TKUSUHARA 2015/05/20 APPR:NUKITA 2015/05/21	GENERAL TOLERANCES (UNLESS SPECIFIED)		DIMENSION STYLE MM ONLY		SCALE 5:1	DESIGN UNITS METRIC	THIRD ANGLE PROJECTION
	0.25 UNDER	± 0.03	DRAWN BY	DATE	TITLE		
	0.25 OVER 0.5 UNDER	± 0.05	KOMURAKAMI	2015/03/03	NANO SIM CARD CONN. BAR-PUSH SIDE INSERTION ASSY <b>molex</b>		
	0.5 OVER 1 UNDER	± 0.10	CHECKED BY	DATE			
1 OVER 10 UNDER	± 0.15	TKUSUHARA	2015/03/06	DOCUMENT NO.			
10 OVER 30 UNDER	± 0.15	APPROVED BY	DATE	SHEET NO.			
30 OVER	± 0.3	NUKITA	2015/03/10	1 OF 4			
ANGULAR ±1 °		MATERIAL NO.		SEE CHART			
DRAFT WHERE APPLICABLE MUST REMAIN WITHIN DIMENSIONS		SIZE A3	THIS DRAWING CONTAINS INFORMATION THAT IS PROPRIETARY TO MOLEX INCORPORATED AND SHOULD NOT BE USED WITHOUT WRITTEN PERMISSION				

9 8 7 6 5 4 3 2 1

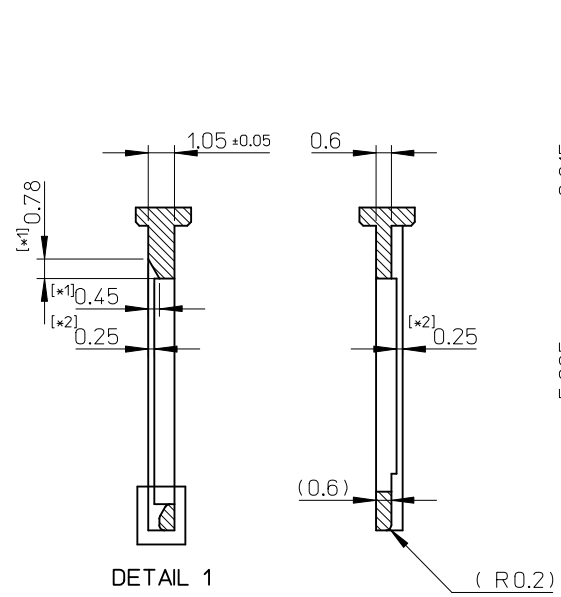




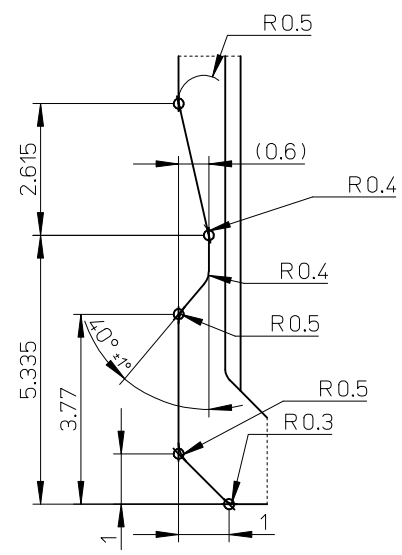
RECOMMENDED MIM TRAY  
 GENERAL TOLERANCES : ±0.05  
 MATERIAL: SUS630  
 SURFACE ROUGHNESS : Ra=1μm MAXIMUM.

[\*1] DIMENSIONS THAT CUSTOMERS ARE SETTABLE ORIGINALLY.  
 [\*2] DIMENSIONS INCLUDING THE INSULATION COATING THICKNESS.

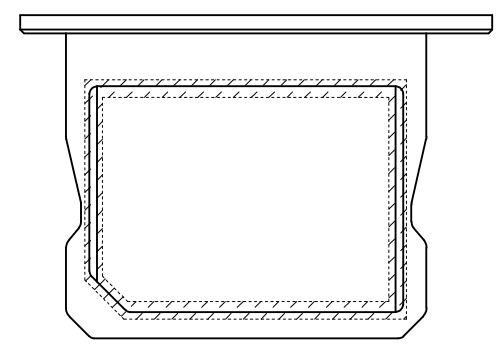
REVISED EC NO: J2015-1539 DRWN: KOMURAKAMI 2015/05/20 CHKD: TKUSUHARA 2015/05/20 APPR: NUKITA 2015/05/21	GENERAL TOLERANCES (UNLESS SPECIFIED)		DIMENSION STYLE MM ONLY		SCALE 5:1	DESIGN UNITS METRIC	THIRD ANGLE PROJECTION	
	0.25 UNDER	±0.03	DRAWN BY	DATE	TITLE			
	0.25 OVER 0.5 UNDER	±0.05	KOMURAKAMI	2015/03/03	NANO SIM CARD CONN. BAR-PUSH SIDE INSERTION ASSY			
	0.5 OVER 1.0 UNDER	±0.1	TKUSUHARA	2015/03/06				
1.0 OVER 10 UNDER	±0.15	APPROVED BY		DATE	DOCUMENT NO.		SHEET NO.	
10 OVER 30 UNDER	±0.15	NUKITA		2015/03/10	SD-505295-001		3 OF 4	
30 OVER	±0.3	MATERIAL NO.		SEE SHEET 1				
ANGULAR ±1 °		DRAFT WHERE APPLICABLE MUST REMAIN WITHIN DIMENSIONS		THIS DRAWING CONTAINS INFORMATION THAT IS PROPRIETARY TO MOLEX INCORPORATED AND SHOULD NOT BE USED WITHOUT WRITTEN PERMISSION				



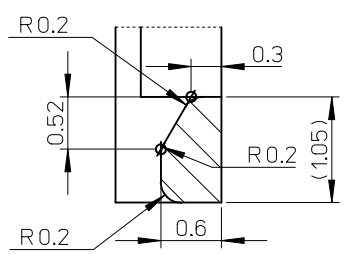
DETAIL 1  
SECTION A-A SECTION B-B  
( R.0.2)



DETAIL 2  
SCALE 10:1  
(LATERAL SYMMETRY)



RECOMMENDATION AREA OF INSULATION COATING (INCLUDING THE SIDE IN THIS AREA)

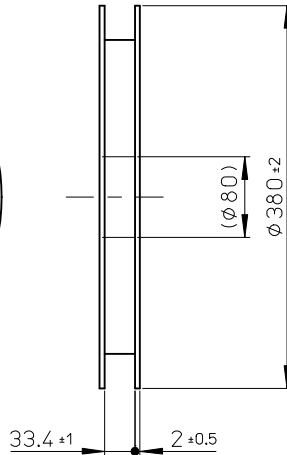
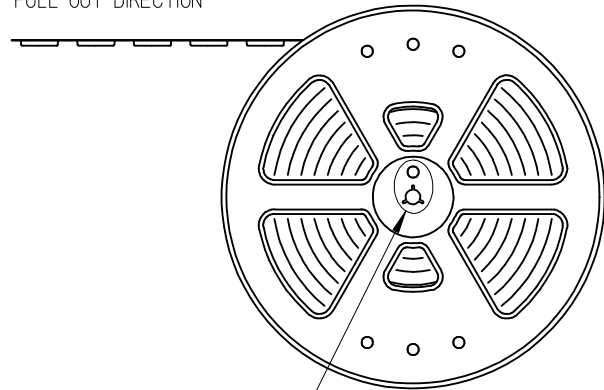


DETAIL 1  
SCALE 20:1

Molex shall not be responsible for any infringement to the extent such infringement is the result of (a) use of the Product(s) in combination with any other products not provided by Molex if the infringement would not have occurred but for such combination, (b) any alteration or modification of the Product(s) not undertaken or authorized by Molex if the infringement would not have occurred but for such alteration or modification, (c) Molex's compliance with Buyer's specifications if the infringement would not have occurred but for such compliance, or (d) Buyer's failure to comply with Molex's instructions regarded as necessary to render the Product(s) non-infringing if the infringement would not have occurred if Buyer would have complied with Molex's instructions.

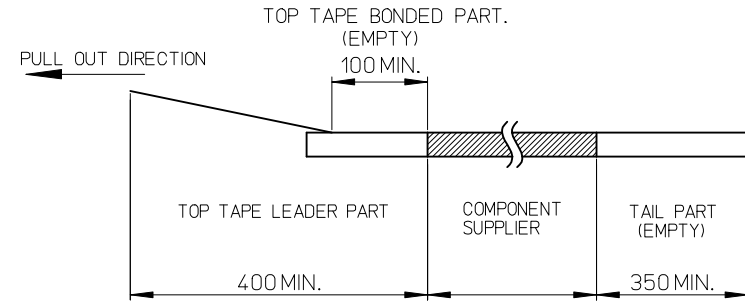
REVISED EC NO: J2015-1539 DRWN: KOMURAKAMI 2015/05/20 CHKD: TKUSUHARA 2015/05/20 APPR: NUKITA 2015/05/21	GENERAL TOLERANCES (UNLESS SPECIFIED)		DIMENSION STYLE MM ONLY		SCALE 5:1	DESIGN UNITS METRIC	THIRD ANGLE PROJECTION
	0.25 UNDER	± 0.03	DRAWN BY	DATE	TITLE		
	0.25 OVER 0.5 UNDER	± 0.05	KOMURAKAMI	2015/03/03	NANO SIM CARD CONN. BAR-PUSH SIDE INSERTION ASSY		
	0.5 OVER 1.0 UNDER	± 0.1	CHECKED BY	DATE			
	1.0 OVER 10 UNDER	± 0.15	TKUSUHARA	2015/03/06			
10 OVER 30 UNDER	± 0.15	APPROVED BY	DATE	DOCUMENT NO.			
30 OVER	± 0.3	NUKITA	2015/03/10	SD-505295-001			
ANGULAR ±1 °		MATERIAL NO.		SHEET NO.			
DRAFT WHERE APPLICABLE MUST REMAIN WITHIN DIMENSIONS		SEE SHEET 1	4 OF 4				
		SIZE A3	THIS DRAWING CONTAINS INFORMATION THAT IS PROPRIETARY TO MOLEX INCORPORATED AND SHOULD NOT BE USED WITHOUT WRITTEN PERMISSION				

PULL OUT DIRECTION

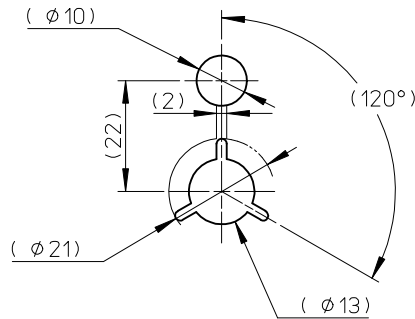


NOTES

1. RE DETAILED DIMENSION, SEE SALES DRAWING.
2. NUMBER OF CONNECTORS : 1500 PCS/REEL.
3. LEAD TAPE LENGTH.



4. TOP TAPE PEEL FORCE IS DEFINED BY IEC60286-3.
5. MATERIAL  
 CARRIER TAPE: POLYSTYRENE  
 TOP TAPE: PET, PE, PEF  
 REEL: POLYSTYRENE (PS)<RECYCLE MATERIAL CONTAINED>
6. ELV AND RoHS COMPLIANT.



DETAIL "D"

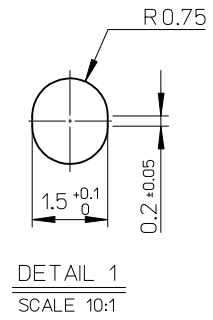
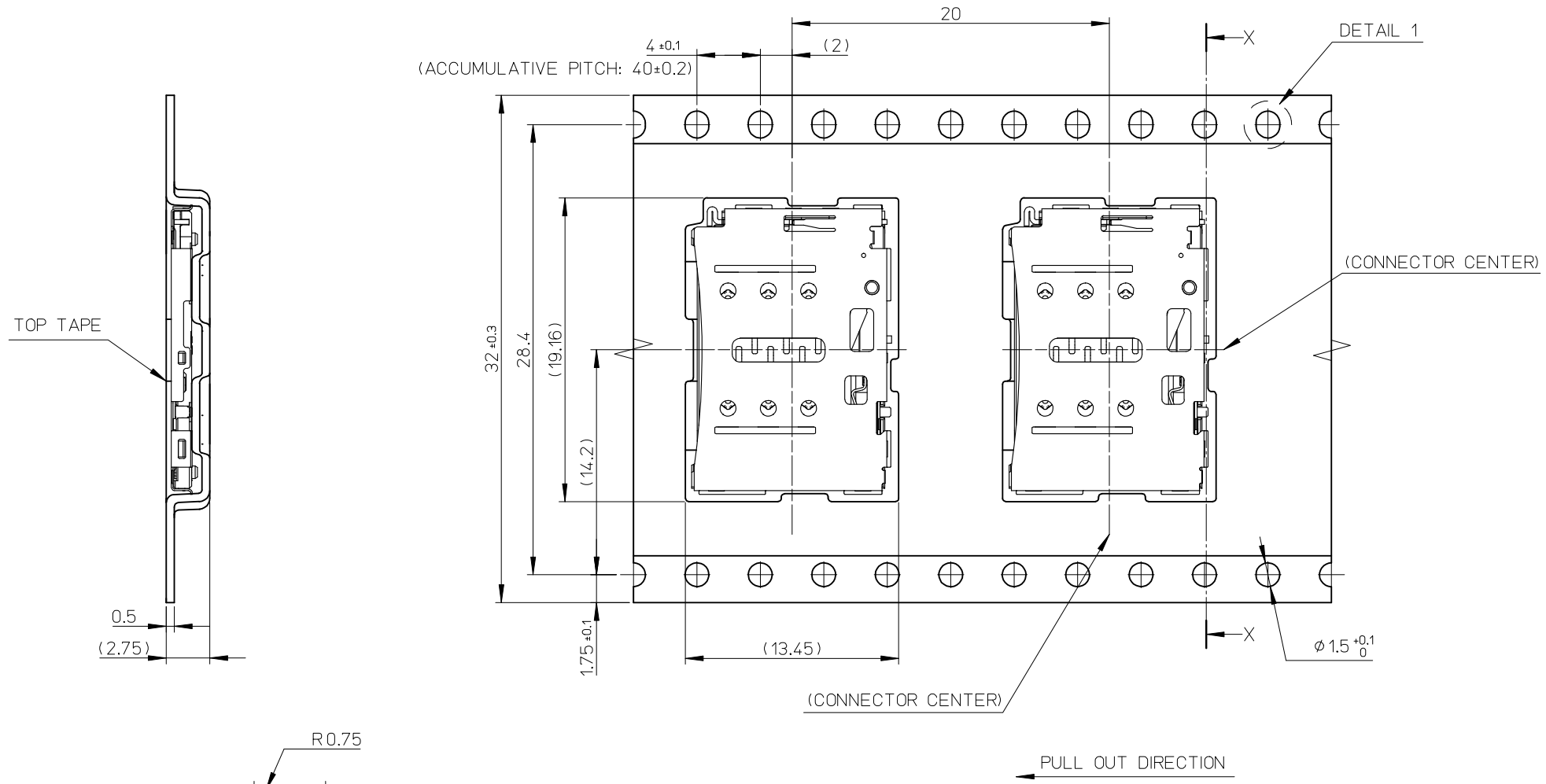
5052950691	6
EMBOSSED PACKAGE	CIRCUITS
ORDER NO.	
CONNECTOR SERIES No. 505295****	

REVISED EC NO: J2015-1539 DRWN:KOMURAKAMI 2015/05/20 CHKD:TKUSUHARA 2015/05/20 APPR:NUKITA 2015/05/21	GENERAL TOLERANCES (UNLESS SPECIFIED)		DIMENSION STYLE		SCALE	DESIGN UNITS	THIRD ANGLE PROJECTION
	0.25 UNDER ±0.03		MM ONLY		---	METRIC	
	0.25 OVER 0.5 UNDER ±0.05		DRAWN BY DATE		TITLE		
	0.5 OVER 1.0 UNDER ±0.1		KOMURAKAMI 2015/03/06		NANO SIM CARD CONN. BAR-PUSH SIDE INSERTION EMBOSSED TAPE PACKAGE		
1.0 OVER 10 UNDER ±0.15		CHECKED BY DATE		DOCUMENT NO.			SHEET NO.
10 OVER 30 UNDER ±0.2		TKUSUHARA 2015/03/06		SD-505295-002			1 OF 2
30 OVER ±0.3		APPROVED BY DATE		THIS DRAWING CONTAINS INFORMATION THAT IS PROPRIETARY TO MOLEX INCORPORATED AND SHOULD NOT BE USED WITHOUT WRITTEN PERMISSION			
ANGULAR ±1 °		NUKITA 2015/03/10					
DRAFT WHERE APPLICABLE MUST REMAIN WITHIN DIMENSIONS		MATERIAL NO.					
A		SEE CHART					
		SIZE A3					

10 9 8 7 6 5 4 3 2 1

F  
E  
D  
C  
B  
A

F  
E  
D  
C  
B  
A



REVISED EC NO: J2015-1539 DRWN: KOMURAKAMI 2015/05/20 CHKD: TKUSUHARA 2015/05/20 APPR: NUKITA 2015/05/21	GENERAL TOLERANCES (UNLESS SPECIFIED)		DIMENSION STYLE	SCALE	DESIGN UNITS	THIRD ANGLE PROJECTION	
	0.25 UNDER	± 0.03	MM ONLY	4:1	METRIC		
	0.25 OVER 0.5 UNDER	± 0.05	DRAWN BY	DATE	TITLE	NANO SIM CARD CONN. BAR-PUSH SIDE INSERTION EMBOSSED TAPE PACKAGE	
	0.5 OVER 1.0 UNDER	± 0.1	CHECKED BY	DATE			
	1.0 OVER 10 UNDER	± 0.15	TKUSUHARA	2015/03/06			
10 OVER 30 UNDER	± 0.2	APPROVED BY	DATE	MATERIAL NO.	DOCUMENT NO.	SHEET NO.	
30 OVER	± 0.3	NUKITA	2015/03/10	SEE SHEET 1	SD-505295-002	2 OF 2	
ANGULAR	± 1 °	DRAFT WHERE APPLICABLE MUST REMAIN WITHIN DIMENSIONS		THIS DRAWING CONTAINS INFORMATION THAT IS PROPRIETARY TO MOLEX INCORPORATED AND SHOULD NOT BE USED WITHOUT WRITTEN PERMISSION			

9 8 7 6 5 4 3 2 1