



Chipsmall Limited consists of a professional team with an average of over 10 year of expertise in the distribution of electronic components. Based in Hongkong, we have already established firm and mutual-benefit business relationships with customers from,Europe,America and south Asia,supplying obsolete and hard-to-find components to meet their specific needs.

With the principle of “Quality Parts,Customers Priority,Honest Operation,and Considerate Service”,our business mainly focus on the distribution of electronic components. Line cards we deal with include Microchip,ALPS,ROHM,Xilinx,Pulse,ON,Everlight and Freescale. Main products comprise IC,Modules,Potentiometer,IC Socket,Relay,Connector.Our parts cover such applications as commercial,industrial, and automotives areas.

We are looking forward to setting up business relationship with you and hope to provide you with the best service and solution. Let us make a better world for our industry!



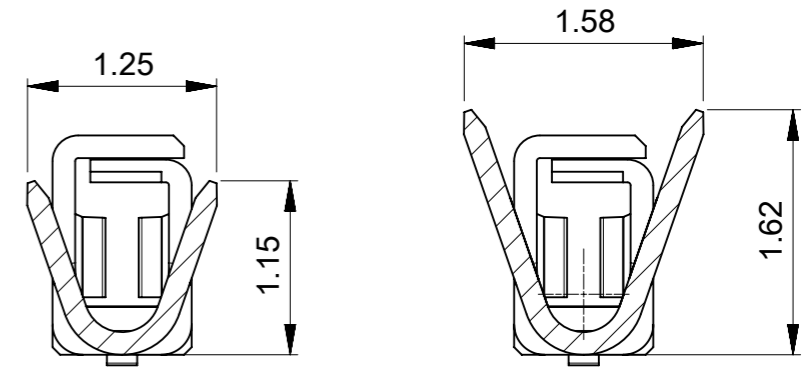
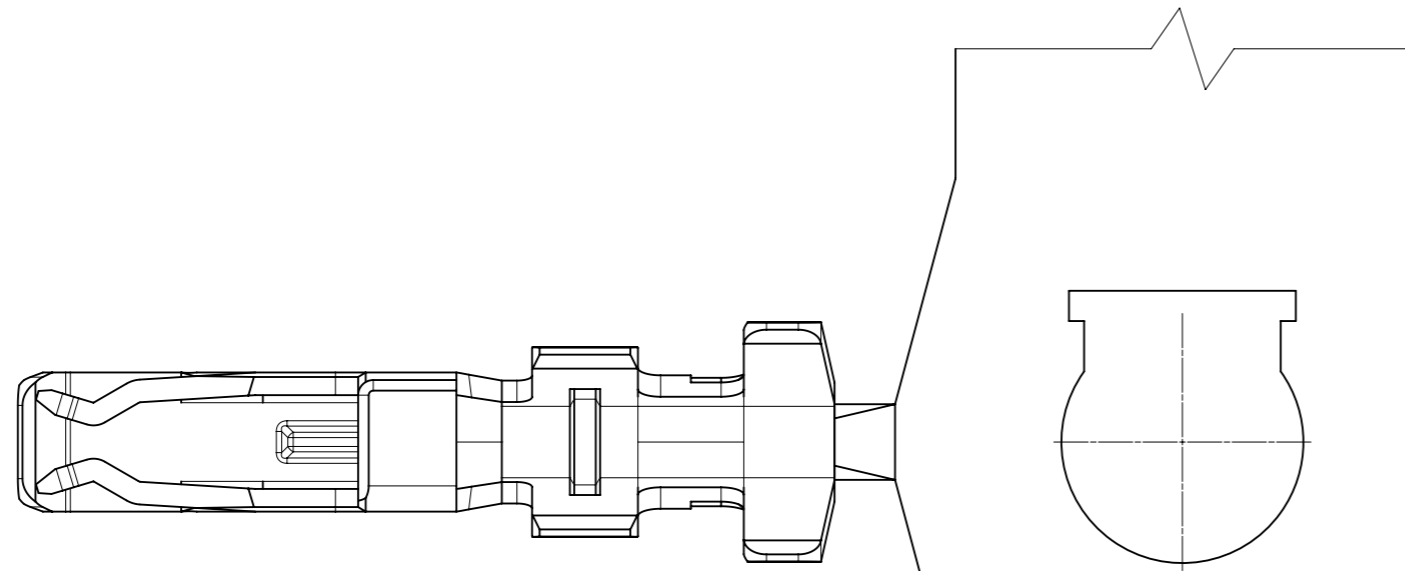
Contact us

Tel: +86-755-8981 8866 Fax: +86-755-8427 6832

Email & Skype: info@chipsmall.com Web: www.chipsmall.com

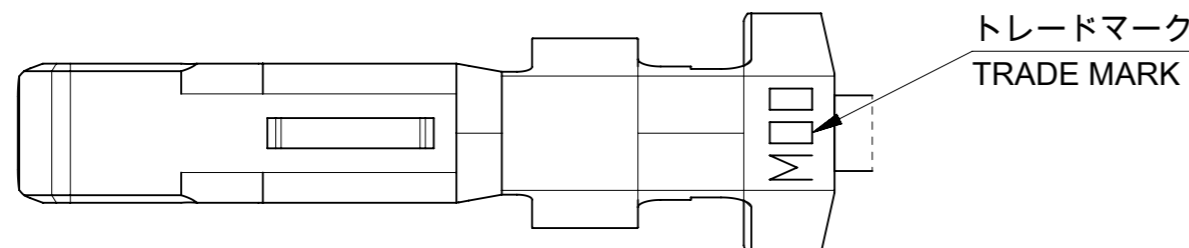
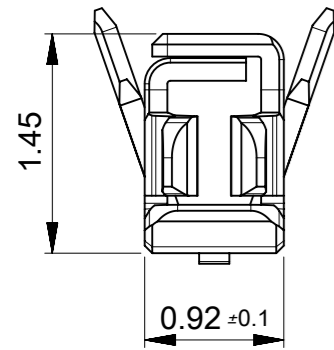
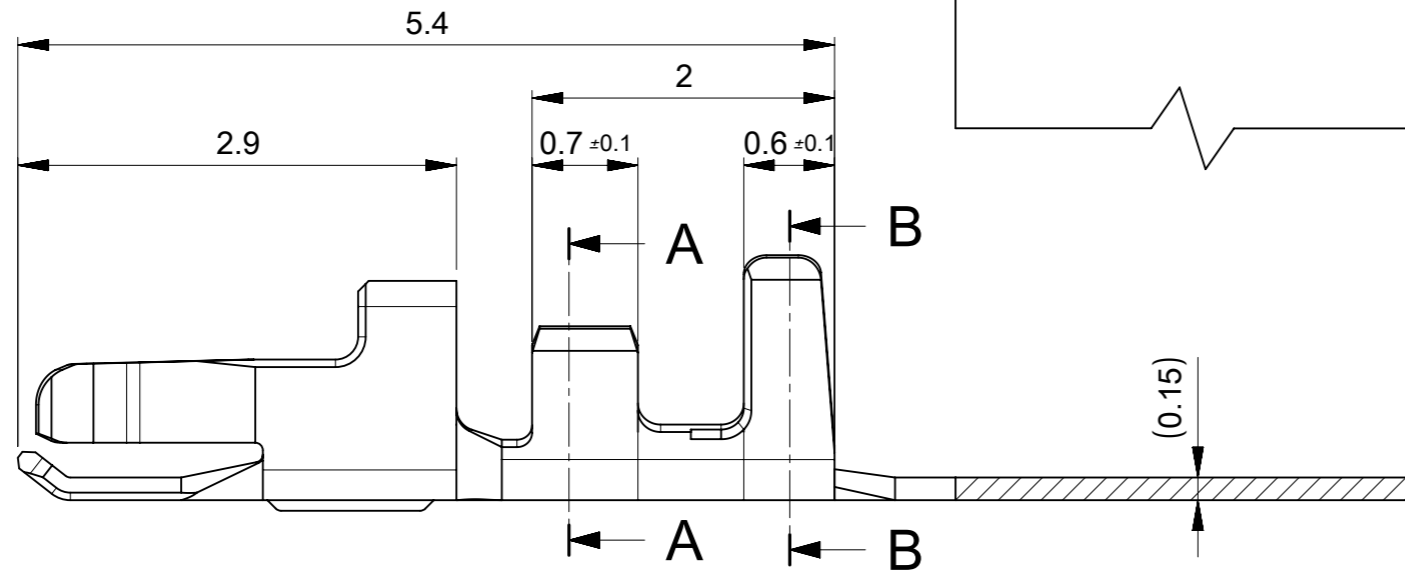
Address: A1208, Overseas Decoration Building, #122 Zhenhua RD., Futian, Shenzhen, China





SECTION A-A

SECTION B-B



NOTES:

- 適合ハウジング : 505432****(DUAL)/505565****(SINGLE)
204523****(DUAL)/204532****(SINGLE)
APPLICABLE HOUSING : 505432****(DUAL)/505565****(SINGLE)
204523****(DUAL)/204532****(SINGLE)
- アプリケーション仕様書 (コネクタ取扱説明書) : AS-505432-001/-002(DUAL)
AS-505565-001/002(SINGLE)
2045230000-AS PS 000/001(DUAL)
2045320000-AS PS 000/001(SINGLE)
APPLICATION SPECIFICATIONS (CONNECTOR MANUAL) : AS-505432-001/-002
AS-505565-001/002
2045230000-AS PS 000/001
2045320000-AS PS 000/001
- 圧着条件については、圧着仕様書 (CS-505431-001) を参照願います。
PLEASE REFER TO CRIMP SPECIFICATION (CS-505431-001).
- 製品仕様書 : 5054320000 PS 002(DUAL)/5055650000 PS 000(SINGLE)
2045230000-PS PS 000(DUAL)/2045320000-PS PS 000(SINGLE)
PRODUCT SPECIFICATION : 5054320000 PS 002(DUAL)/5055650000 PS 000(SINGLE)
2045230000-PS PS 000(DUAL)/2045320000-PS PS 000(SINGLE)
- 圧着視覚教材 (品質要領書) : ATS-57427-0000
CRIMPING VISUAL AID : ATS-57427-0000

5054311000	連鎖状 CHAIN
リール REEL PACKAGE	端子形状 FORM
オーダー番号 ORDER NO.	

THIS DRAWING CONTAINS INFORMATION THAT IS PROPRIETARY TO MOLEX ELECTRONIC TECHNOLOGIES, LLC AND SHOULD NOT BE USED WITHOUT WRITTEN PERMISSION

MATERIAL 材料 銅合金, 錫めっき: 0.7µm以上 COPPER ALLOY PRE-TIN PLATED (HEAT TREATED MATTE TIN) : 0.7 MICROMETER MINIMUM	
WIRE RANGE 適用電線範囲	AWG #26 ~ #30 MM ² : 0.049 ~ 0.136
INS. RANGE 被覆外径	φ0.78 ~ φ1.02

REVISED EC NO: 168093 DRWN: TAKAIKE CHK'D: KOMURAKAMI APPR: TKANEKO	2017/11/27	GENERAL TOLERANCES (UNLESS SPECIFIED)	DIMENSION UNITS	SCALE
	2017/12/04	ANGULAR TOL ± 1.0 °	mm	20:1
	2017/12/06	4 PLACES ± 0.2	DRWN BY	DATE
		3 PLACES ± 0.2	RWATANABE01	2017/09/14
		2 PLACES ± 0.2	CHK'D BY	DATE
	1 PLACE ± 0.2	KOMURAKAMI	2017/09/26	
	0 PLACES ± 0.2	APPR BY	DATE	
		TKANEKO	2017/09/26	
		DRAWING SIZE	THIRD ANGLE PROJECTION	
		A3		
		DRAFT WHERE APPLICABLE MUST REMAIN WITHIN DIMENSIONS		

molex			
MICRO-LOCK PLUS 1.25 CRIMP TERM CRIMP TERM			
PRODUCT CUSTOMER DRAWING			
SERIES	MATERIAL NUMBER	CUSTOMER	
505431	SEE CHART	GENERAL	
DOCUMENT NUMBER	DOC TYPE	DOC PART	SHEET NUMBER
5054311000-SD	PSD	000	1 OF 1

