



Chipsmall Limited consists of a professional team with an average of over 10 year of expertise in the distribution of electronic components. Based in Hongkong, we have already established firm and mutual-benefit business relationships with customers from,Europe,America and south Asia,supplying obsolete and hard-to-find components to meet their specific needs.

With the principle of “Quality Parts,Customers Priority,Honest Operation,and Considerate Service”,our business mainly focus on the distribution of electronic components. Line cards we deal with include Microchip,ALPS,ROHM,Xilinx,Pulse,ON,Everlight and Freescale. Main products comprise IC,Modules,Potentiometer,IC Socket,Relay,Connector.Our parts cover such applications as commercial,industrial, and automotives areas.

We are looking forward to setting up business relationship with you and hope to provide you with the best service and solution. Let us make a better world for our industry!



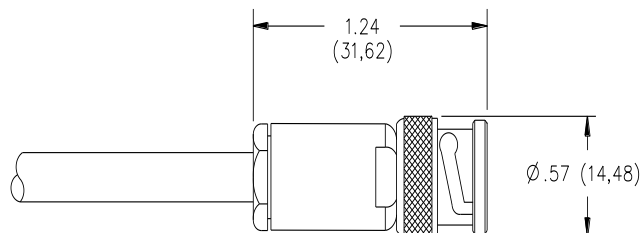
Contact us

Tel: +86-755-8981 8866 Fax: +86-755-8427 6832

Email & Skype: info@chipsmall.com Web: www.chipsmall.com

Address: A1208, Overseas Decoration Building, #122 Zhenhua RD., Futian, Shenzhen, China



Model 5056 & Assembly Instructions
Triaxial Male 2 Lug Connector to Cable

Model 5056
Triaxial Male 2 Lug Connector to Cable

Features

- Fits Belden 9222 triaxial cable, 0.242" O.D.

Materials

Body and Fittings:	Brass, Tarnish Resistant Plating
Center Contacts:	Male: Brass, Gold Plated
Outer Contact:	Beryllium Copper, Gold Plated
Dielectric:	PTFE

Specifications

Voltage:	500 Vrms
Impedance:	50 Ohm
Temperature:	-65° C. (-85° F.) to +165° C. (+329° F.)
Frequency Range:	DC to 500 MHz

Ordering Information

Model: 5056
Triaxial Male 2 Lug Connector for Belden 9222 Cable

USA: Sales: 800-490-2361
Technical Support: technicalsupport@pomonatest.com
Fax: 425-446-5844

Europe: 31-(0) 40 2675 150 **International:** 425-446-5500
Where to Buy: www.pomonaelectronics.com

All dimensions are in inches. Tolerances (except noted): .xx = ±.02" (.51 mm), .xxx = ±.005" (.127 mm). All specifications are to the latest revisions. Specifications are subject to change without notice. Registered trademarks are the property of their respective companies.

Model 5056 & Assembly Instructions Triaxial Male 2 Lug Connector to Cable

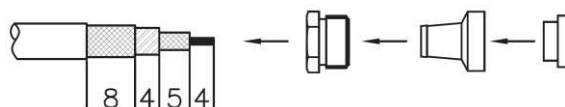
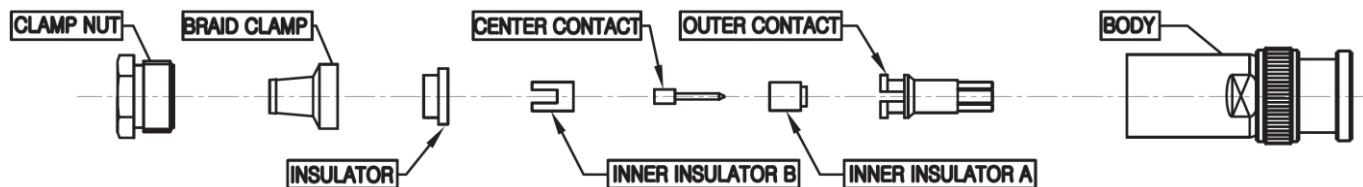


FIGURE #1

- 1.1 Strip cable per drawing lengths (mm).
- 1.2 Slide nut onto stripped cable.
- 1.3 Insert braid clamp and insulation on stripped cable.



FIGURE #2

- 2.1 Solder pin with center conductor then insert inner insulator A and B on the pin.
- 2.2 Peel back shield and insert outer contact.

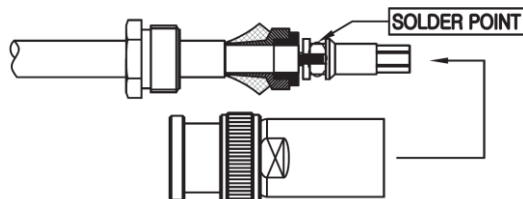


FIGURE #3

- 3.1 Position shield on solder point and solder outer contact to shield.
- 3.2 Insert body on assembled cable and fasten with wrench.

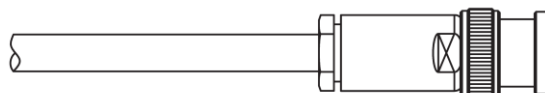


FIGURE #4

- 4.1 Completed assembly shown.

USA: Sales: 800-490-2361
 Technical Support: technicalsupport@pomonatest.com
 Fax: 425-446-5844
Europe: 31-(0) 40 2675 150 **International:** 425-446-5500
Where to Buy: www.pomonaelectronics.com

All dimensions are in inches. Tolerances (except noted): .xx = ± 0.02 " (.51 mm),
 .xxx = ± 0.005 " (.127 mm). All specifications are to the latest revisions.
 Specifications are subject to change without notice. Registered trademarks are
 the property of their respective companies.