



Chipsmall Limited consists of a professional team with an average of over 10 year of expertise in the distribution of electronic components. Based in Hongkong, we have already established firm and mutual-benefit business relationships with customers from,Europe,America and south Asia,supplying obsolete and hard-to-find components to meet their specific needs.

With the principle of “Quality Parts,Customers Priority,Honest Operation,and Considerate Service”,our business mainly focus on the distribution of electronic components. Line cards we deal with include Microchip,ALPS,ROHM,Xilinx,Pulse,ON,Everlight and Freescale. Main products comprise IC,Modules,Potentiometer,IC Socket,Relay,Connector.Our parts cover such applications as commercial,industrial, and automotives areas.

We are looking forward to setting up business relationship with you and hope to provide you with the best service and solution. Let us make a better world for our industry!



Contact us

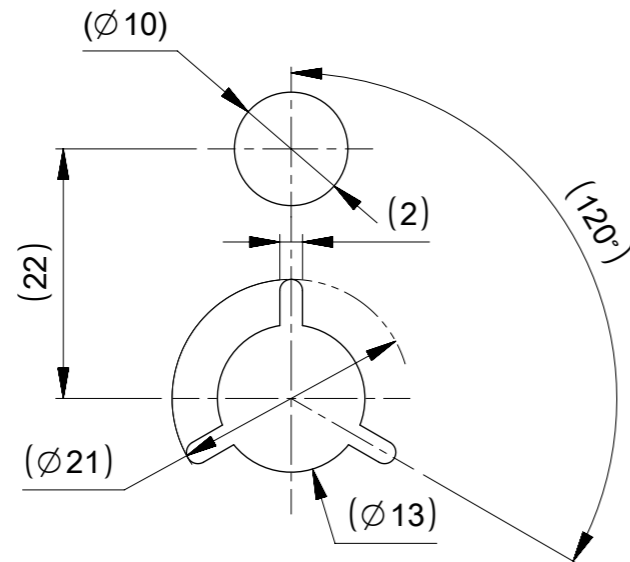
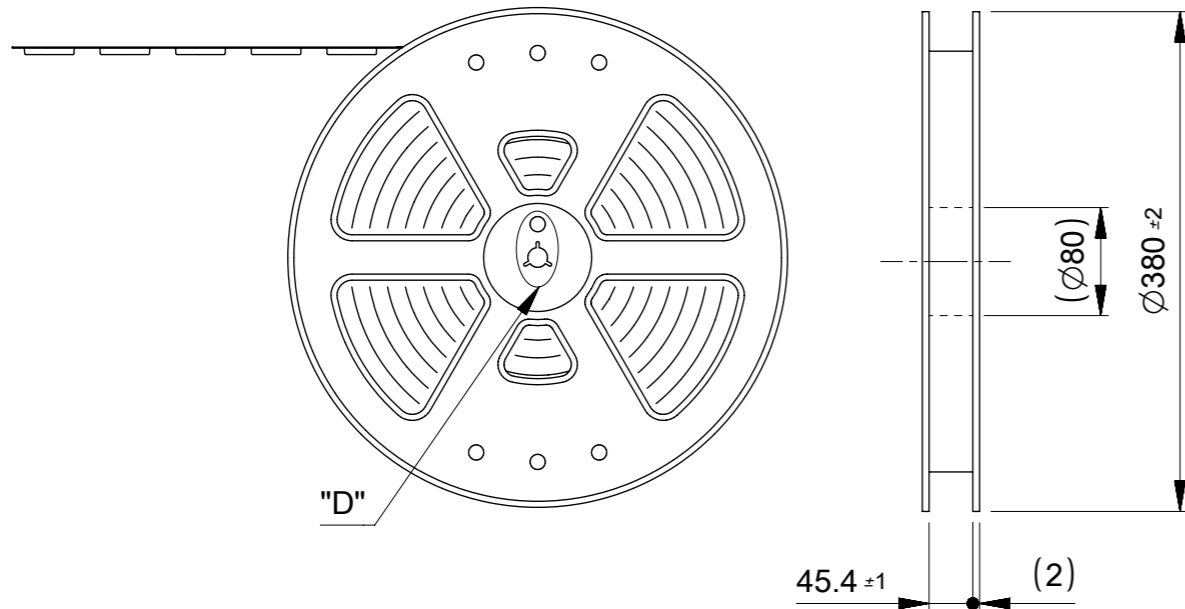
Tel: +86-755-8981 8866 Fax: +86-755-8427 6832

Email & Skype: info@chipsmall.com Web: www.chipsmall.com

Address: A1208, Overseas Decoration Building, #122 Zhenhua RD., Futian, Shenzhen, China



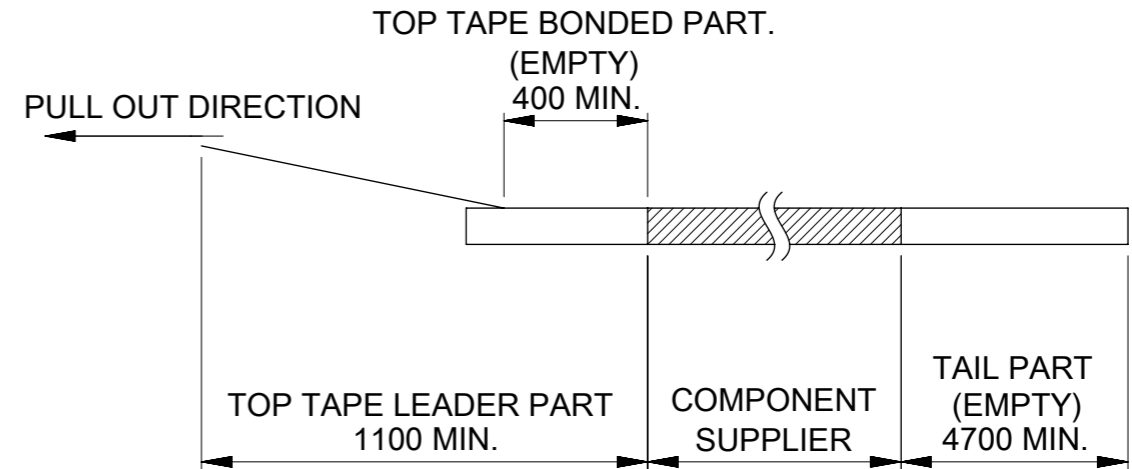
PULL OUT DIRECTION



DETAIL "D"

NOTES

1. NUMBER OF CONNECTORS :1000 PCS/REEL
2. LEAD TAPE LENGTH.



3. MATERIAL

CARRIER TAPE: POLYSTYRENE

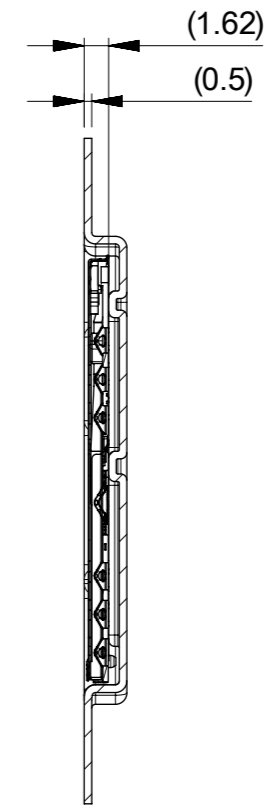
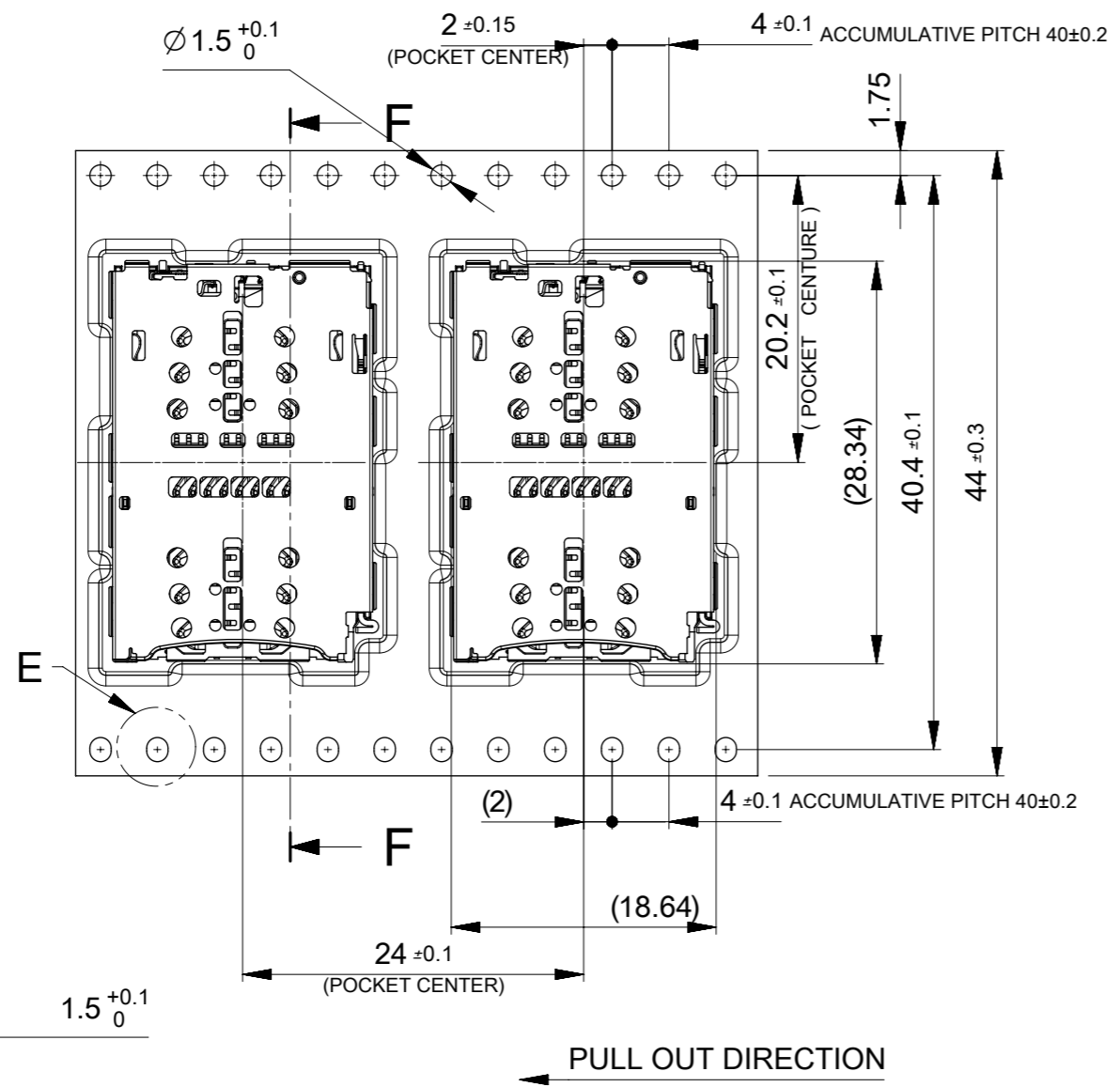
TOP TAPE: PET, PE, OTHER

REEL: POLYSTYRENE(PS)<RECYCLE MATERIAL CONTAINED>

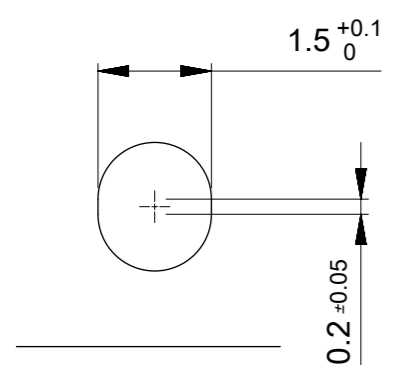
5056032092	6+6+8
EMBOSSED PACKAGE	極数
オーダー番号 ORDER NO	CIRCUITS
CONNECTOR SERIES No.5056032021	

THIS DRAWING CONTAINS INFORMATION THAT IS PROPRIETARY TO MOLEX ELECTRONIC TECHNOLOGIES, LLC AND SHOULD NOT BE USED WITHOUT WRITTEN PERMISSION

EC NO: 107253 DRWN: STANAKA02 CHK'D: SMARUYAMA APPR: TKUSUHARA01	2016/07/05 2016/09/06 2016/09/06	GENERAL TOLERANCES (UNLESS SPECIFIED) ANGULAR TOL ± 1.0 ° 4 PLACES ± 0.3 3 PLACES ± 0.3 2 PLACES ± 0.3 1 PLACE ± 0.3 0 PLACES ± 0.3	DIMENSION UNITS: MM SCALE: 5:1 DRWN BY: STANAKA02 DATE: 2016/07/05 CHK'D BY: SMARUYAMA DATE: 2016/09/06 APPR BY: TKUSUHARA01 DATE: 2016/09/06	PRODUCT CUSTOMER DRAWING
	DRAFT WHERE APPLICABLE MUST REMAIN WITHIN DIMENSIONS	DRAWING SIZE: A3 THIRD ANGLE PROJECTION	SERIES: 505603 MATERIAL NUMBER: SEE TABLE IN SHEET 1 CUSTOMER: GENERAL	3IN2 BAR-PUSH H=1.35 FULL ANTICRUSH TYPE ASSY (DUAL NSIM / NSIM+MSD)
	DOCUMENT NUMBER: 5056030000 DOC TYPE: PSD DOC PART: 000 SHEET NUMBER: 1 OF 2			



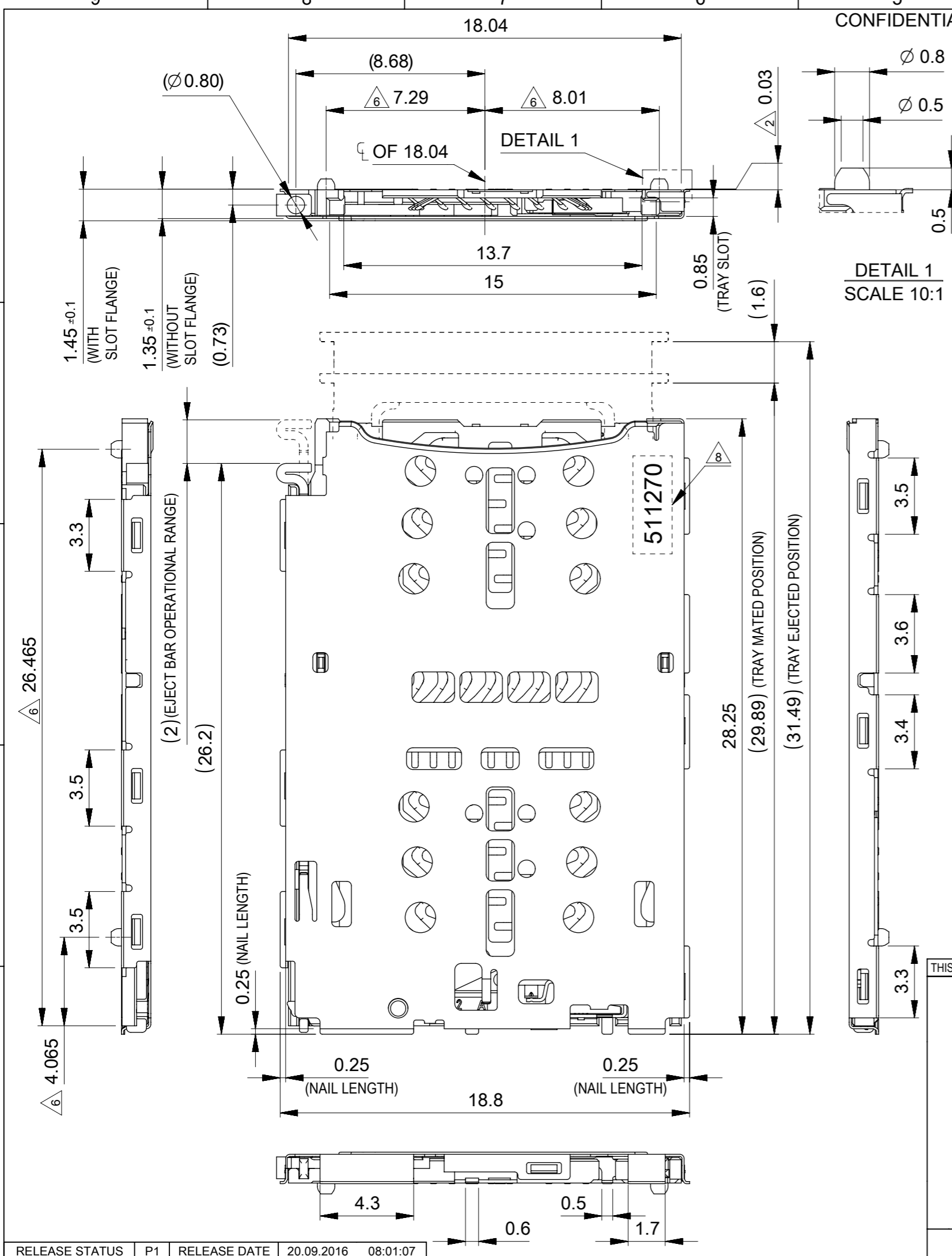
SECTION F-F



DETAIL E
SCALE 10:1

THIS DRAWING CONTAINS INFORMATION THAT IS PROPRIETARY TO MOLEX ELECTRONIC TECHNOLOGIES, LLC AND SHOULD NOT BE USED WITHOUT WRITTEN PERMISSION

EC NO: 107253 DRWN: STANAKA02 CHK'D: SMARUYAMA APPR: TKUSUHARA01	2016/07/05	GENERAL TOLERANCES (UNLESS SPECIFIED)	DIMENSION UNITS	SCALE				
	2016/09/06	ANGULAR TOL ± 1.0 °	MM	2:1				
	2016/09/06	4 PLACES ± 0.3	DRWN BY	DATE		3IN2 BAR-PUSH H=1.35 FULL ANTICRUSH TYPE ASSY (DUAL NSIM / NSIM+MSD)		
		3 PLACES ± 0.3	STANAKA02	2016/07/05				
		2 PLACES ± 0.3	CHK'D BY	DATE		PRODUCT CUSTOMER DRAWING		
	1 PLACE ± 0.3	SMARUYAMA	2016/09/06					
	0 PLACES ± 0.3	APPR BY	DATE	SERIES	MATERIAL NUMBER	CUSTOMER		
		DRAFT WHERE APPLICABLE MUST REMAIN WITHIN DIMENSIONS	DRAWING SIZE	THIRD ANGLE PROJECTION	505603	SEE TABLE IN SHEET 1	GENERAL	
			A3		DOCUMENT NUMBER	DOC TYPE	DOC PART	SHEET NUMBER
					5056030000	PSD	000	2 OF 2



CONFIDENTIAL

No.	NAME	MATERIAL	FINISH
①	HOUSING	LIQUID CRYSTAL POLYMER UL94V-0, BLACK	N/A
②	microSD TERMINAL	COPPER ALLOY	CONTACT AREA MINIMUM 0.3 MICROMETER GOLD PLATING TAIL AREA : MINIMUM 0.05 MICROMETER GOLD PLATING UNDERPLATING : NICKEL OVERALL
③	nanoSIM TERMINAL & SWITCH	COPPER ALLOY	CONTACT AREA MINIMUM 0.3 MICROMETER GOLD PLATING TAIL AREA : MINIMUM 0.05 MICROMETER GOLD PLATING UNDERPLATING : NICKEL OVERALL
④	SHELL	STAINLESS STEEL	TAIL AREA : MINIMUM 0.05 MICROMETER GOLD PLATING UNDERPLATING : NICKEL OVERALL
⑤	EJECT LEVER	STAINLESS STEEL	N/A
⑥	EJECT BAR	STAINLESS STEEL	N/A
⑦	DETECT LEVER	COPPER ALLOY	CONTACT AREA MINIMUM 0.3 MICROMETER GOLD PLATING TAIL AREA : MINIMUM 0.05 MICROMETER GOLD PLATING UNDERPLATING : NICKEL OVERALL
⑧	HOOK	PRESS:STAINLESS STEEL MOLD:POLYAMIDE UL94V-0 BLACK	N/A

NOTES :

1. TERMINAL AND NAIL COPLANARITY TO BE 0.1 MAXIMUM. (FROM GAUGE PLATE)
2. STAND OFF DIMENSION (STAND OFF DIMENSION IS INCLUDED IN THE CONNECTOR TOTAL HEIGHT)
3. DETECT SWITCH FUNCTION
4. PATTERN KEEP OUT AREA DIMENSION
5. (DIMENSION) : REFERENCE VALUE (IT IS A NON-MANAGEMENT DIMENSION)
6. PLASTIC POST FOR SMT POSITION.
7. ELV & RoHS COMPLIANT.
8. LOT No. 5 11 27 0
9. 一般公差は以下を優先する。 GENERAL TOLERANCES OF THE HIGHEST PRIORITY.(UNLESS SPECIFIED)

NO TRAY	CLOSE
TRAY EJECTED POSITION	CLOSE
TRAY MATED POSITION	OPEN

0.25 UNDER	±0.05
0.25 OVER 0.5 UNDER	±0.08
0.5 OVER 1.0 UNDER	±0.10
1.0 OVER 10 UNDER	±0.15
10 OVER 30 UNDER	±0.25
30 OVER	±0.3
ANGULAR ±1°	

THE YEAR OF GRACE
 5 : 20*5
 6 : 20*6
 7 : 20*7

MONTH
 01 : JANUARY
 02 : FEBRUARY
 ...
 12 : DECEMBER

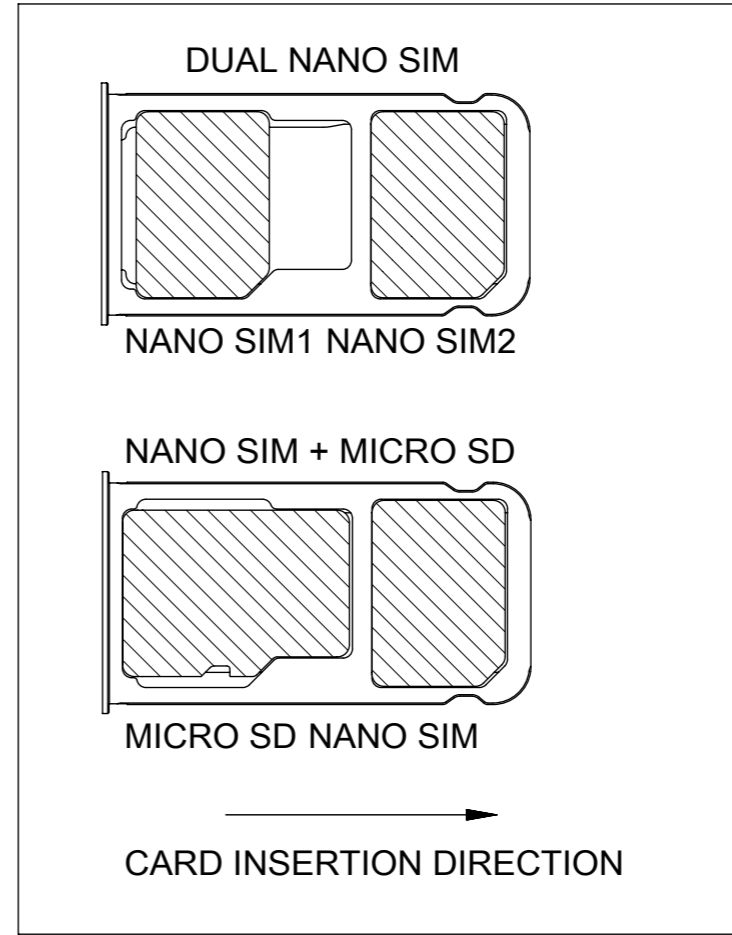
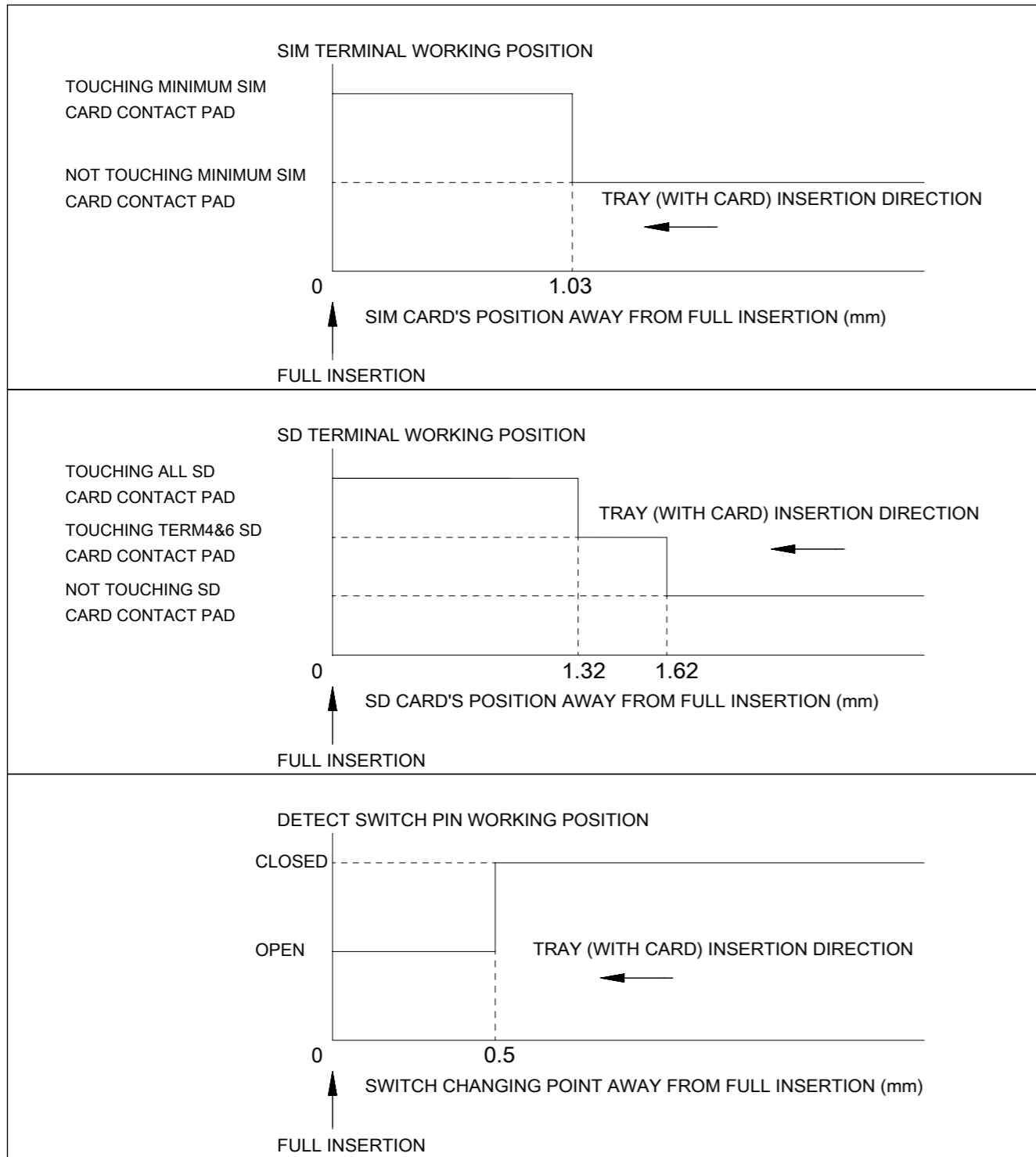
DAY 01-31
 LINE No.

5056032092	6+6+8
EMBOSSED PACKAGE	極数
オーダー番号 ORDER No.	CIRCUITS
CONNECTOR SERIES No.5056032021	

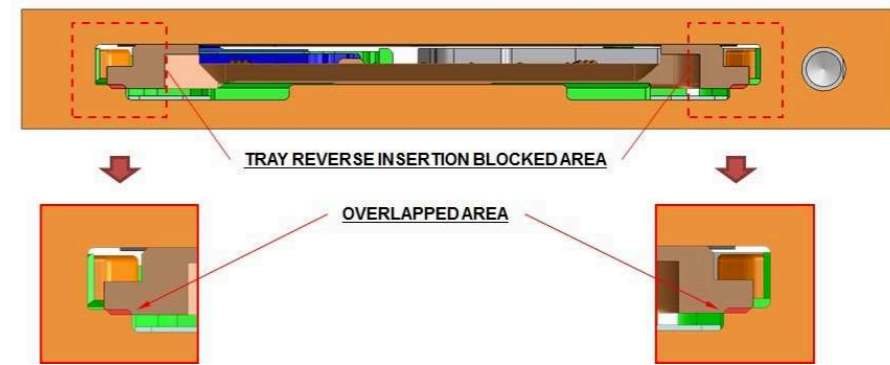
THIS DRAWING CONTAINS INFORMATION THAT IS PROPRIETARY TO MOLEX ELECTRONIC TECHNOLOGIES, LLC AND SHOULD NOT BE USED WITHOUT WRITTEN PERMISSION

EC NO: 108529 DRWN: DGONDO CHK'D: SMARUYAMA APPR: TKUSUHARA01	2016/09/07	GENERAL TOLERANCES (UNLESS SPECIFIED)	DIMENSION UNITS	SCALE	
	2016/09/20	ANGULAR TOL ± 1.0 °	MM	5:1	
	2016/09/20	4 PLACES ± 0.3	DRWN BY	DATE	
		3 PLACES ± 0.3	DGONDO	2016/07/28	
	2 PLACES ± 0.3	CHK'D BY	DATE		
	1 PLACE ± 0.3	SMARUYAMA	2016/08/02		
	0 PLACES ± 0.3	APPR BY	DATE		
		KMORIKAWA	2016/08/04		
		DRAWING SIZE	THIRD ANGLE PROJECTION		
		A3			
		DRAFT WHERE APPLICABLE MUST REMAIN WITHIN DIMENSIONS			

PRODUCT CUSTOMER DRAWING		
SERIES	MATERIAL NUMBER	CUSTOMER
505603	SEE TABLE IN SHEET 1	GENERAL
DOCUMENT NUMBER	DOC TYPE	DOC PART
5056031000	PSD	000
		SHEET NUMBER
		1 OF 6



10. SET UP "TRAY REVERSE INSERTION BLOCKED AREA" IS RECOMMENDED. IT EFFECTS TO PREVENT REVERSE INSERTION.

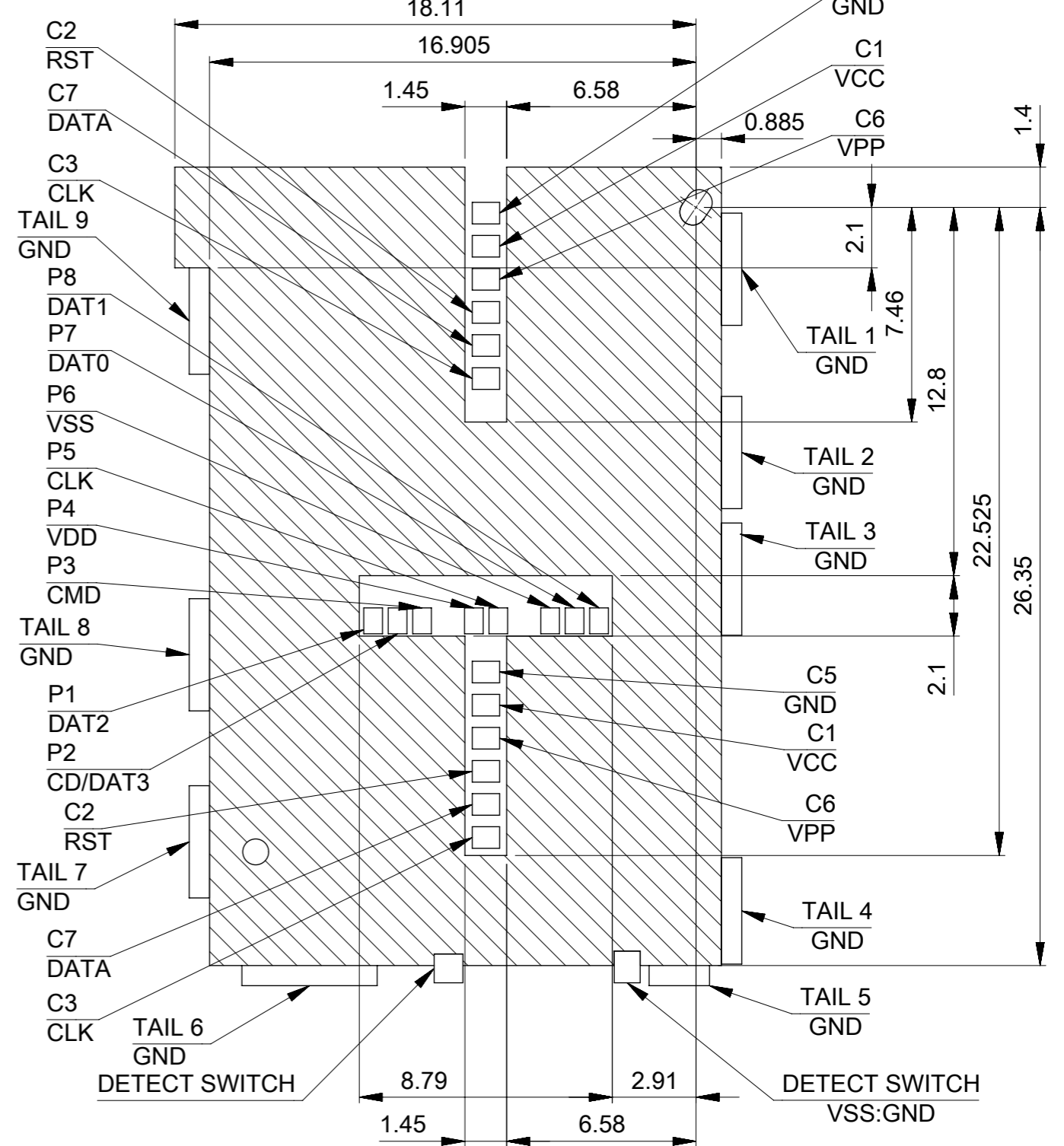
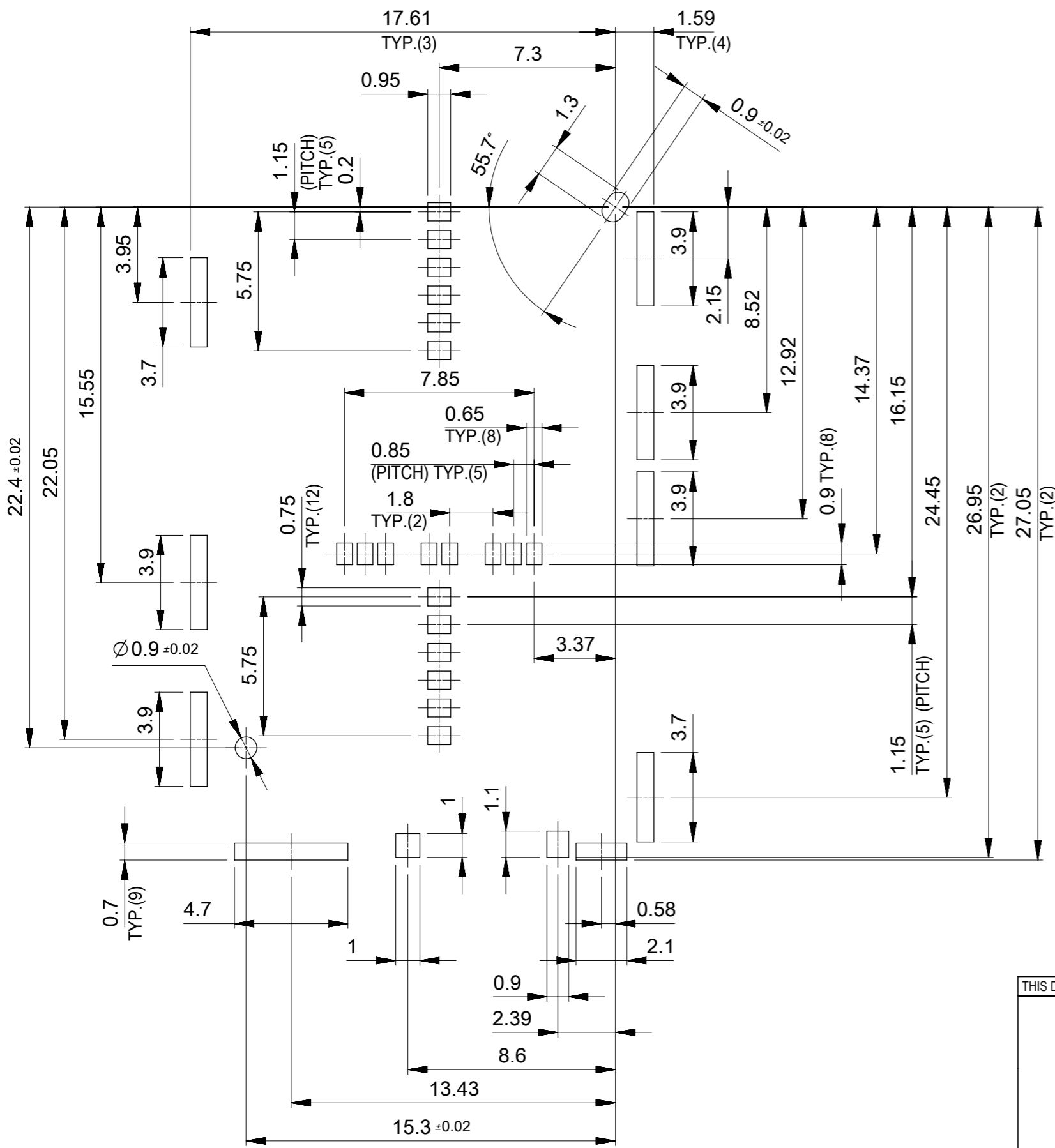


11. APPLICATION SPECIFICATION REFER TO "5056032092 PS A00".

THIS DRAWING CONTAINS INFORMATION THAT IS PROPRIETARY TO MOLEX ELECTRONIC TECHNOLOGIES, LLC AND SHOULD NOT BE USED WITHOUT WRITTEN PERMISSION

EC NO: 108529 DRWN: DGONDO CHK'D: SMARUYAMA APPR: TKUSUHARA01	2016/09/07	2016/09/20	2016/09/20	GENERAL TOLERANCES (UNLESS SPECIFIED) ANGULAR TOL ± 1.0 ° 4 PLACES ± 0.3 3 PLACES ± 0.3 2 PLACES ± 0.3 1 PLACE ± 0.3 0 PLACES ± 0.3	DIMENSION UNITS	SCALE			
					MM	2:1			
					DRWN BY	DATE		DGONDO	2016/07/28
					CHK'D BY	DATE		SMARUYAMA	2016/08/02
					APPR BY	DATE		KMORIKAWA	2016/08/04
				DRAFT WHERE APPLICABLE MUST REMAIN WITHIN DIMENSIONS	DRAWING SIZE	THIRD ANGLE PROJECTION	PRODUCT CUSTOMER DRAWING SERIES: 505603 MATERIAL NUMBER: SEE TABLE IN SHEET 1 CUSTOMER: GENERAL		
					A3		DOCUMENT NUMBER: 5056031000 DOC TYPE: PSD DOC PART: 000 SHEET NUMBER: 2 OF 6		

PATTERN KEEP OUT AREA
GENERAL TORELANCES : ±0.05



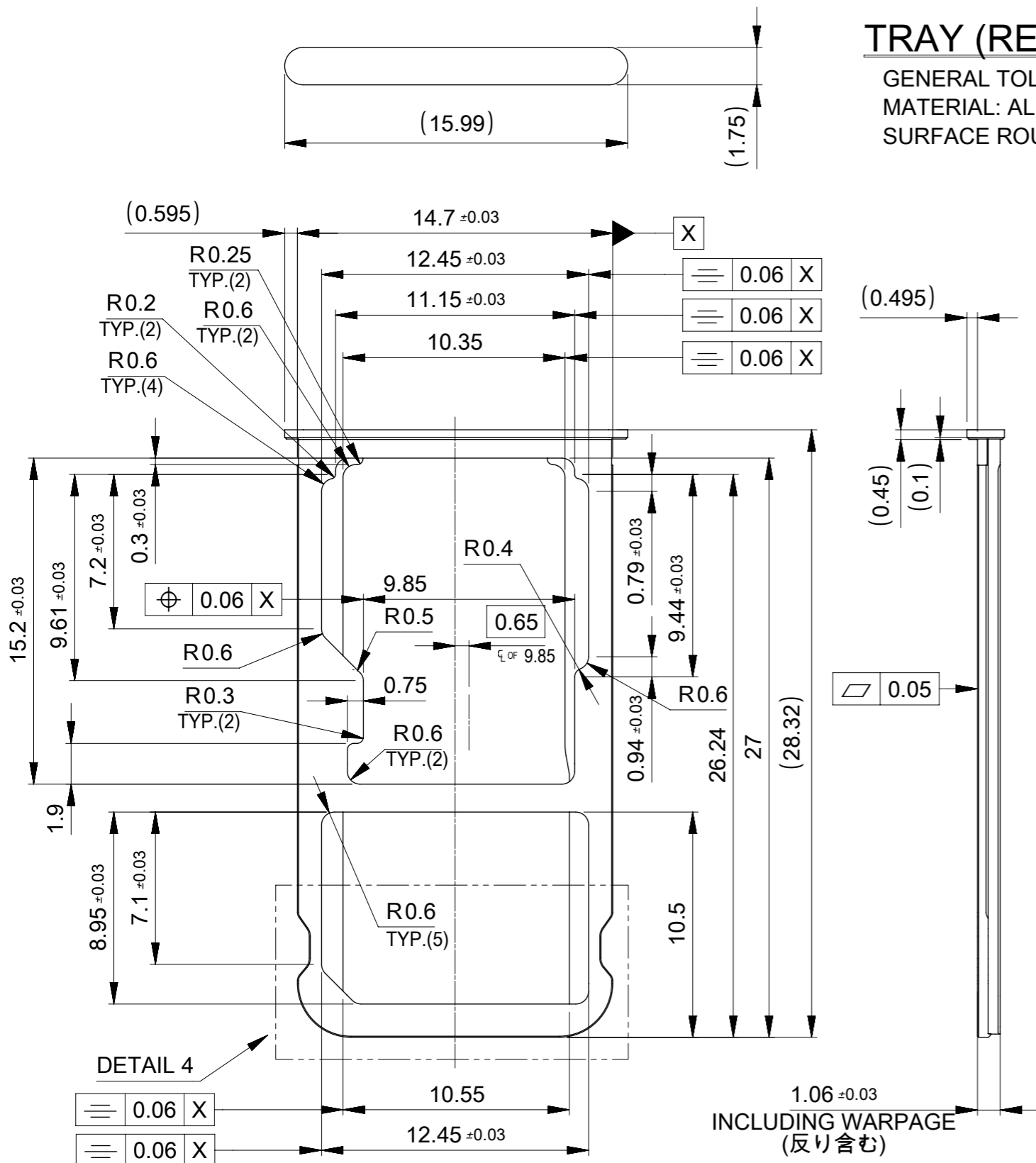
RECOMMENDED P.W.BOARD PATTERN LAYOUT
GENERAL TORELANCES : ±0.05

THIS DRAWING CONTAINS INFORMATION THAT IS PROPRIETARY TO MOLEX ELECTRONIC TECHNOLOGIES, LLC AND SHOULD NOT BE USED WITHOUT WRITTEN PERMISSION

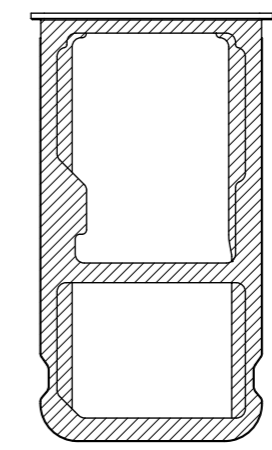
EC NO: 108529 DRWN: DGONDO CHK'D: SMARUYAMA APPR: TKUSUHARA01	2016/09/07 2016/09/20 2016/09/20	GENERAL TOLERANCES (UNLESS SPECIFIED) ANGULAR TOL ± 1.0 ° 4 PLACES ± 0.3 3 PLACES ± 0.3 2 PLACES ± 0.3 1 PLACE ± 0.3 0 PLACES ± 0.3	DIMENSION UNITS: MM SCALE: 5:1		
	DRWN BY: DGONDO DATE: 2016/07/28	CHK'D BY: SMARUYAMA DATE: 2016/08/02	DRWG SIZE: A3 THIRD ANGLE PROJECTION		3IN2 BAR-PUSH CNC-TRAY ANTI-CRUSH ASSY (DUAL NSIM / NSIM+MSD)
	APPR BY: KMORIKAWA DATE: 2016/08/04	PRODUCT CUSTOMER DRAWING	SERIES: 505603 MATERIAL NUMBER: SEE TABLE IN SHEET 1 CUSTOMER: GENERAL		
	DRAFT WHERE APPLICABLE MUST REMAIN WITHIN DIMENSIONS	DOCUMENT NUMBER: 5056031000 DOC TYPE: PSD DOC PART: 000 SHEET NUMBER: 3 OF 6			

TRAY (REFERENCE ONLY)

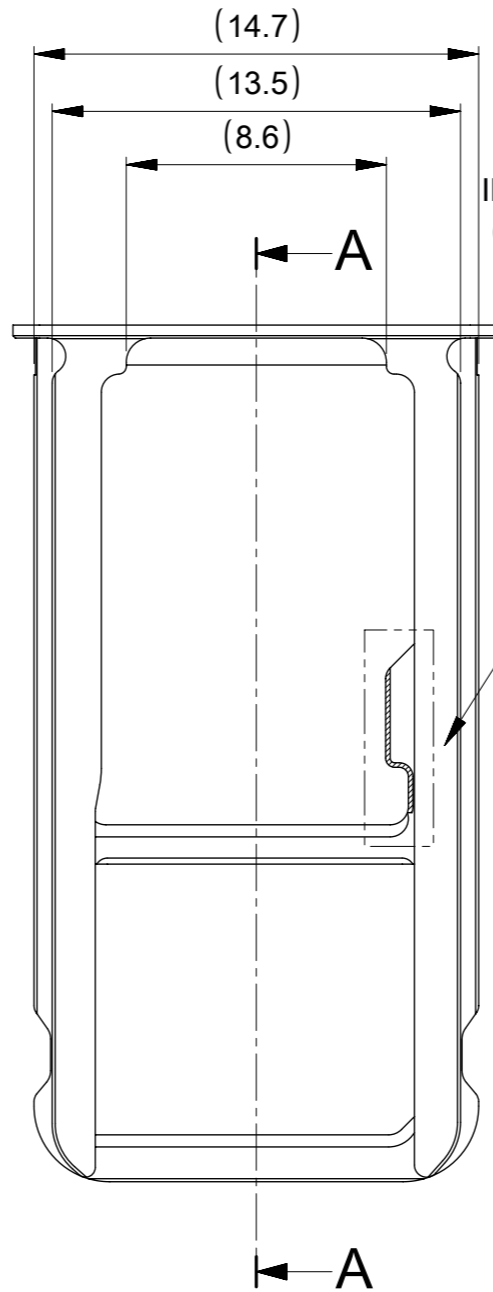
GENERAL TOLERANCE: 0.05
 MATERIAL: ALUMINUM or SUS630
 SURFACE ROUGHNESS : Ra=0.32μm MAXIMUM.



INCLUDING WARPAGE
 (反り含む)

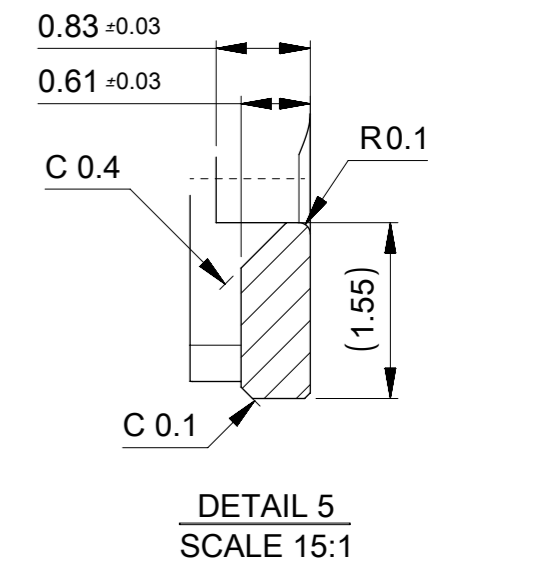
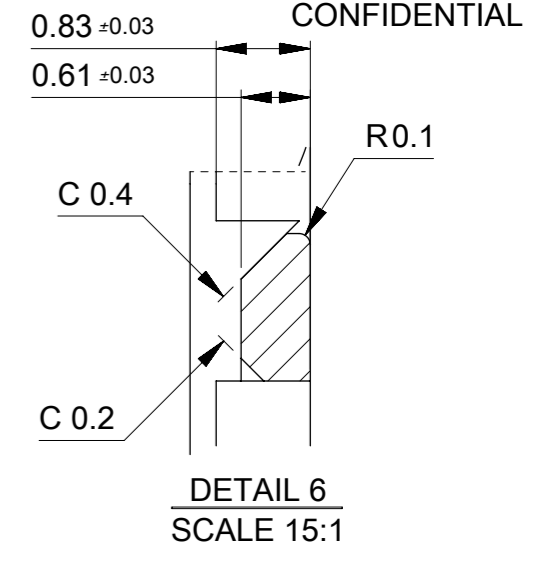


INSULATION PLATING AREA
 (INCLUDING THE SIDE FACE)



DETAIL 7

SECTION A-A



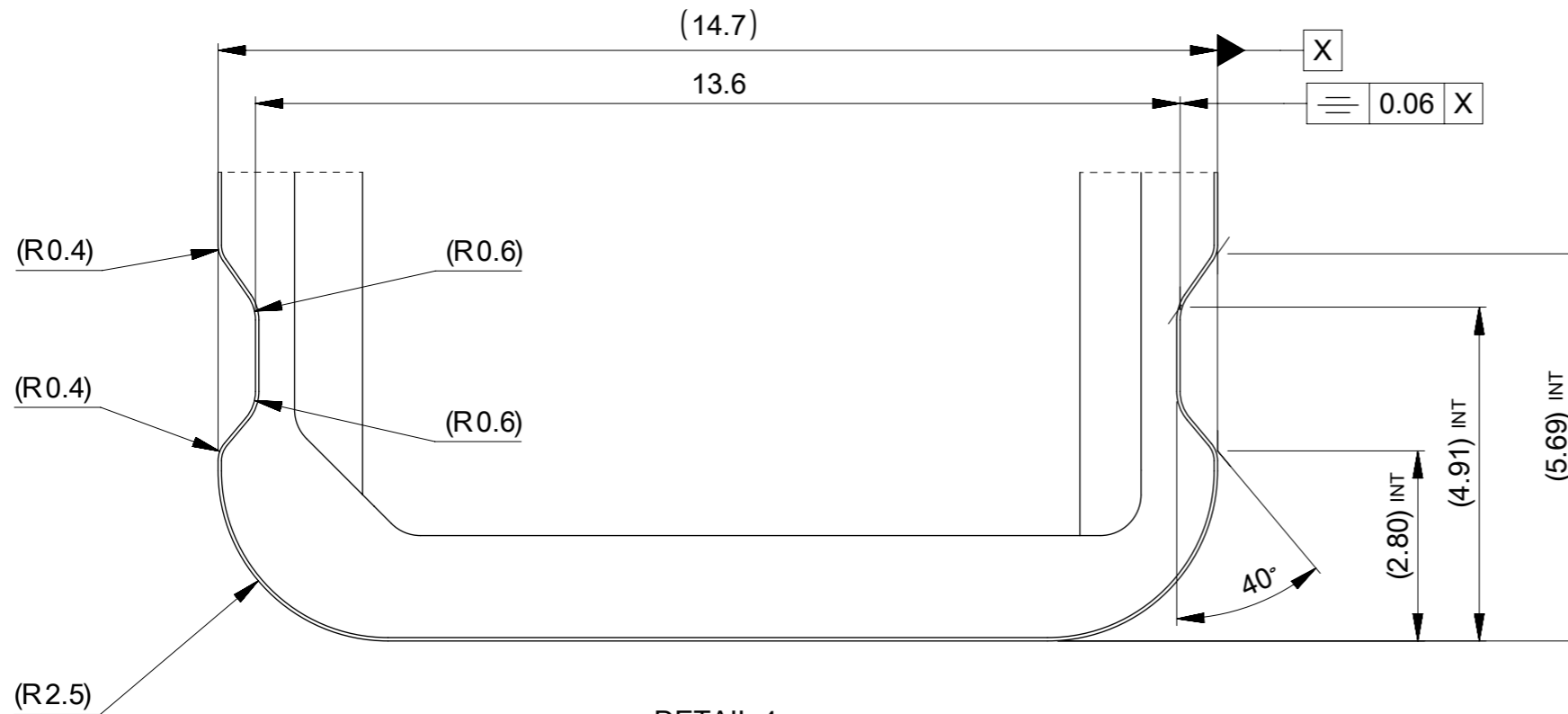
HATCH AREA IS C0.15

DETAIL 7
 SCALE 5:1

THIS DRAWING CONTAINS INFORMATION THAT IS PROPRIETARY TO MOLEX ELECTRONIC TECHNOLOGIES, LLC AND SHOULD NOT BE USED WITHOUT WRITTEN PERMISSION

EC NO: 108529 DRWN: DGONDO CHK'D: SMARUYAMA APPR: TKUSUHARA01	2016/09/07	GENERAL TOLERANCES (UNLESS SPECIFIED) ANGULAR TOL ± 1.0 ° 4 PLACES ± 0.3 3 PLACES ± 0.3 2 PLACES ± 0.3 1 PLACE ± 0.3 0 PLACES ± 0.3	DIMENSION UNITS	SCALE				
	2016/09/20		MM	4:1				
	2016/09/20		DRWN BY	DATE				
			DGONDO	2016/07/28				
			CHK'D BY	DATE	3IN2 BAR-PUSH CNC-TRAY ANTI-CRUSH ASSY (DUAL NSIM / NSIM+MSD)			
			SMARUYAMA	2016/08/02				
			APPR BY	DATE	PRODUCT CUSTOMER DRAWING			
			KMORIKAWA	2016/08/04				
			DRAWING SIZE	THIRD ANGLE PROJECTION	SERIES	MATERIAL NUMBER	CUSTOMER	
			A3		505603	SEE TABLE IN SHEET 1	GENERAL	
			DRAFT WHERE APPLICABLE MUST REMAIN WITHIN DIMENSIONS		DOCUMENT NUMBER	DOC TYPE	DOC PART	SHEET NUMBER
					5056031000	PSD	000	4 OF 6

TRAY (REFERENCE ONLY)



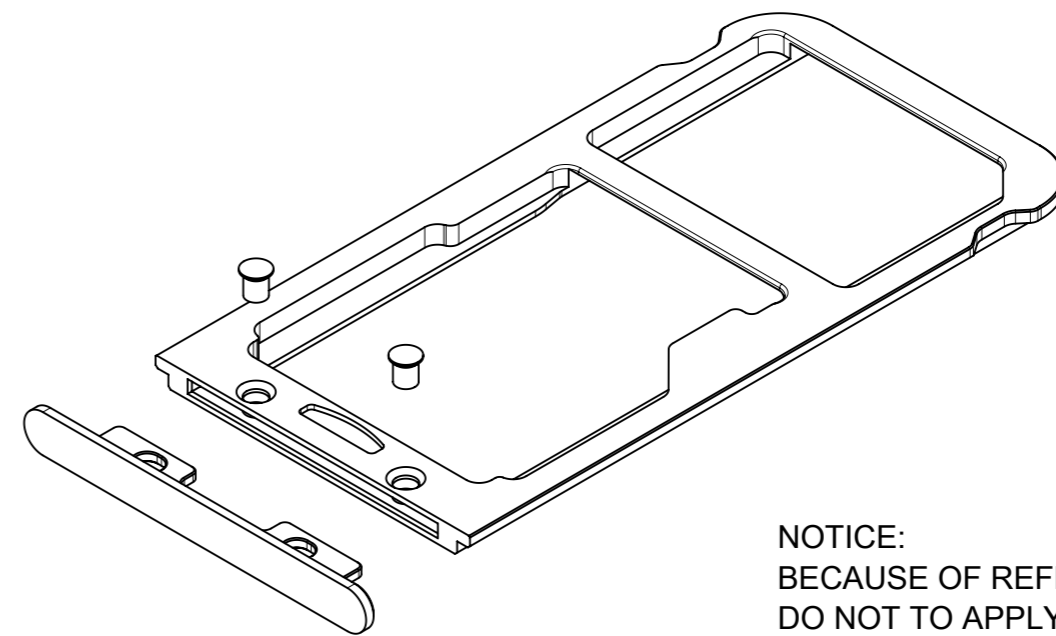
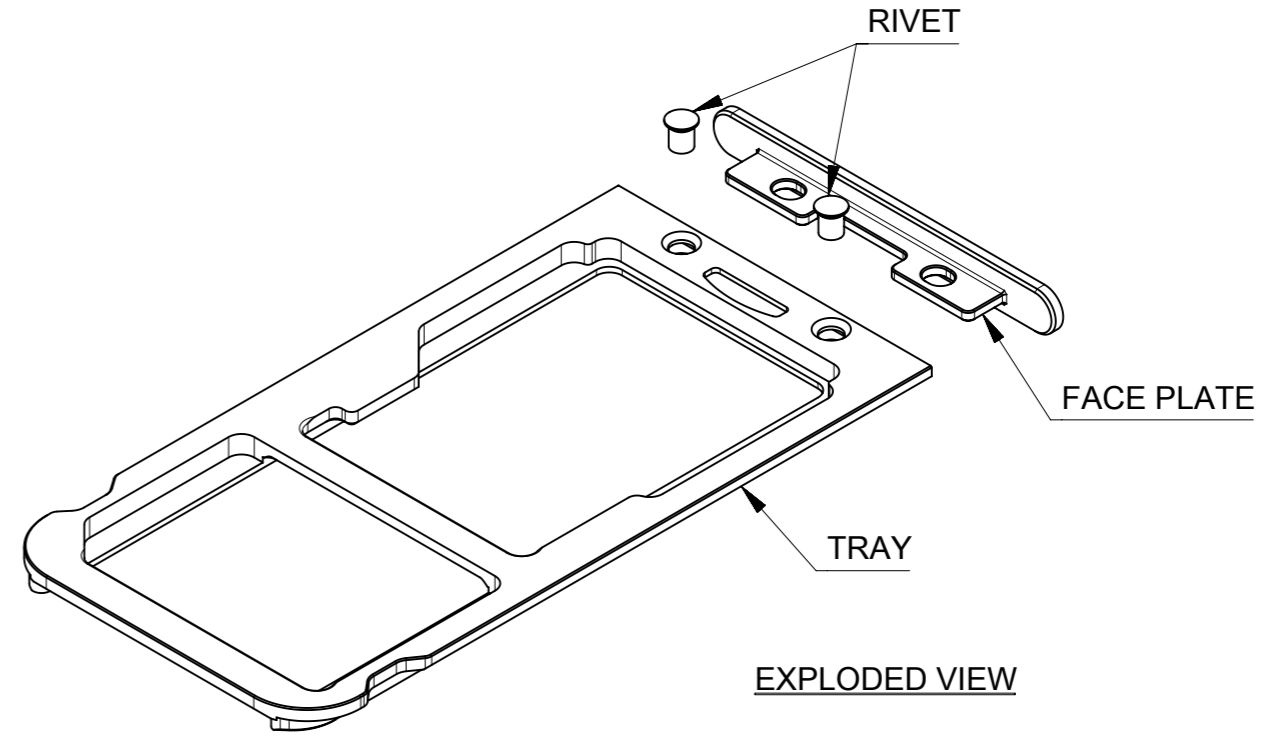
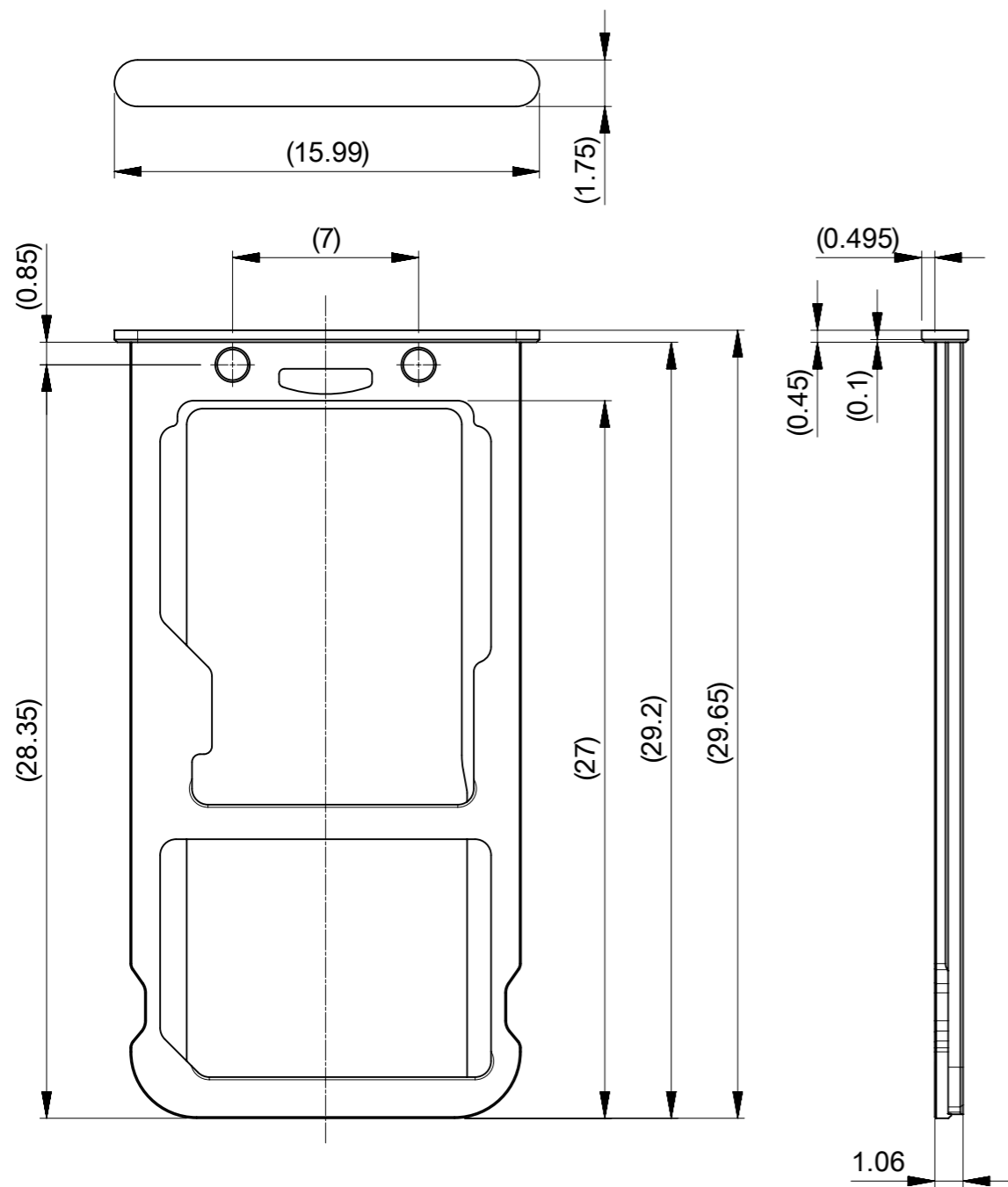
DETAIL 4
SCALE 10:1

Molex shall not be responsible for any infringement to the extent such infringement is the result of (a) use of the Product(s) in combination with any other products not provided by Molex if the infringement would not have occurred but for such combination, (b) any alteration or modification of the Product(s) not undertaken or authorized by Molex if the infringement would not have occurred but for such alteration or modification, (c) Molex's compliance with Buyer's specifications if the infringement would not have occurred but for such compliance, or (d) Buyer's failure to comply with Molex's instructions regarded as necessary to render the Product(s) non-infringing if the infringement would not have occurred if Buyer would have complied with Molex's instructions.

THIS DRAWING CONTAINS INFORMATION THAT IS PROPRIETARY TO MOLEX ELECTRONIC TECHNOLOGIES, LLC AND SHOULD NOT BE USED WITHOUT WRITTEN PERMISSION

EC NO: 108529 DRWN: DGONDO CHK'D: SMARUYAMA APPR: TKUSUHARA01	2016/09/07 2016/09/20 2016/09/20	GENERAL TOLERANCES (UNLESS SPECIFIED) ANGULAR TOL ± 1.0 ° 4 PLACES ± 0.3 3 PLACES ± 0.3 2 PLACES ± 0.3 1 PLACE ± 0.3 0 PLACES ± 0.3	DIMENSION UNITS	SCALE					
	MM		10:1						
	DRWN BY		DATE	DRWN BY	DATE	3IN2 BAR-PUSH CNC-TRAY ANTI-CRUSH ASSY (DUAL NSIM / NSIM+MSD)			
	DGONDO		2016/07/28	CHK'D BY	DATE				
SMARUYAMA	2016/08/02	APPR BY	DATE	PRODUCT CUSTOMER DRAWING					
KMORIKAWA	2016/08/04	DRAWING SIZE	THIRD ANGLE PROJECTION					SERIES	MATERIAL NUMBER
DRAFT WHERE APPLICABLE MUST REMAIN WITHIN DIMENSIONS		A3		505603	SEE TABLE IN SHEET 1	GENERAL			
				DOCUMENT NUMBER	DOC TYPE	DOC PART	SHEET NUMBER		
				5056031000	PSD	000	5 OF 6		

TRAY CEPARATE TYPE (REFERENCE ONLY)



NOTICE:
BECAUSE OF REFERENCE EXAMPLE,
DO NOT TO APPLY THIS DESIGN.

Molex shall not be responsible for any infringement to the extent such infringement is the result of (a) use of the Product(s) in combination with any other products not provided by Molex if the infringement would not have occurred but for such combination, (b) any alteration of modification of the Product(s) not undertaken or authorized by Molex if the infringement would not have occurred but for such alteration or modification, (c) Molex's compliance with Buyer's specifications if the infringement would not have occurred but for such compliance, or (d) Buyer's failure to comply with Molex's instructions regarded as necessary to render the Product(s) non-infringing if the infringement would not have occurred if Buyer would have complied with Molex's instructions.

THIS DRAWING CONTAINS INFORMATION THAT IS PROPRIETARY TO MOLEX ELECTRONIC TECHNOLOGIES, LLC AND SHOULD NOT BE USED WITHOUT WRITTEN PERMISSION

EC NO: 108529 DRWN: DGONDO CHK'D: SMARUYAMA APPR: TKUSUHARA01	2016/09/07	GENERAL TOLERANCES (UNLESS SPECIFIED)		DIMENSION UNITS	SCALE		
	2016/09/20	ANGULAR TOL ± 1.0 °		MM	4:1		
	2016/09/20	4 PLACES ± 0.3	DRWN BY	DATE	DGONDO		2016/07/28
		3 PLACES ± 0.3	CHK'D BY	DATE	SMARUYAMA		2016/08/02
		2 PLACES ± 0.3	APPR BY	DATE	KMORIKAWA		2016/08/04
	1 PLACE ± 0.3	DRAWING SIZE	THIRD ANGLE PROJECTION			PRODUCT CUSTOMER DRAWING	
	0 PLACES ± 0.3	A3		SERIES	MATERIAL NUMBER	CUSTOMER	
	DRAFT WHERE APPLICABLE MUST REMAIN WITHIN DIMENSIONS			505603	SEE TABLE IN SHEET 1	GENERAL	
				DOCUMENT NUMBER	DOC TYPE	DOC PART	SHEET NUMBER
				5056031000	PSD	000	6 OF 6