



Chipsmall Limited consists of a professional team with an average of over 10 year of expertise in the distribution of electronic components. Based in Hongkong, we have already established firm and mutual-benefit business relationships with customers from,Europe,America and south Asia,supplying obsolete and hard-to-find components to meet their specific needs.

With the principle of “Quality Parts,Customers Priority,Honest Operation,and Considerate Service”,our business mainly focus on the distribution of electronic components. Line cards we deal with include Microchip,ALPS,ROHM,Xilinx,Pulse,ON,Everlight and Freescale. Main products comprise IC,Modules,Potentiometer,IC Socket,Relay,Connector.Our parts cover such applications as commercial,industrial, and automotives areas.

We are looking forward to setting up business relationship with you and hope to provide you with the best service and solution. Let us make a better world for our industry!



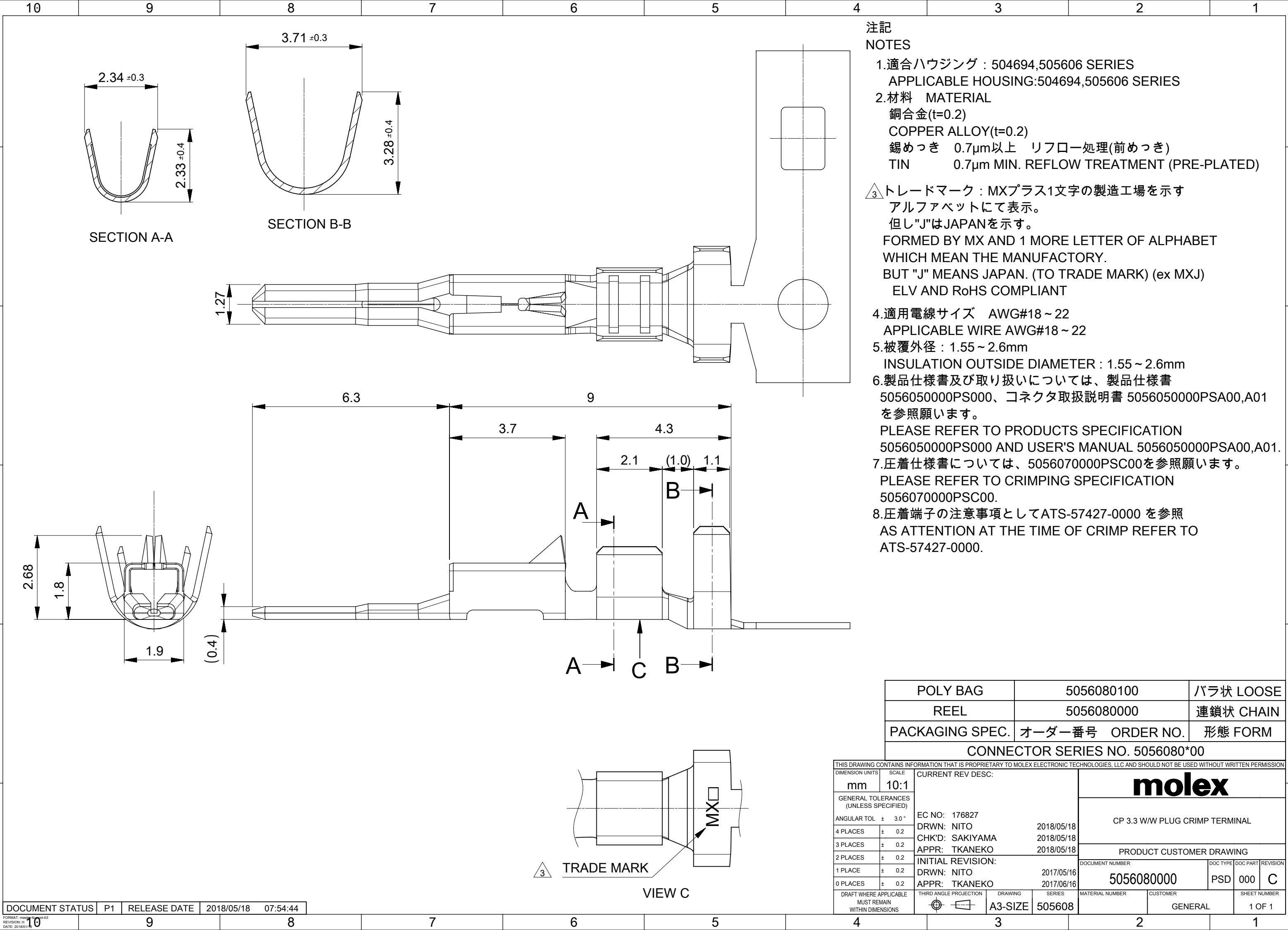
Contact us

Tel: +86-755-8981 8866 Fax: +86-755-8427 6832

Email & Skype: info@chipsmall.com Web: www.chipsmall.com

Address: A1208, Overseas Decoration Building, #122 Zhenhua RD., Futian, Shenzhen, China





注記
NOTES

1.適合ハウジング : 504694,505606 SERIES
APPLICABLE HOUSING:504694,505606 SERIES

2.材料 MATERIAL
銅合金(t=0.2)
COPPER ALLOY(t=0.2)
錫めっき 0.7μm以上 リフロー処理(前めっき)
TIN 0.7μm MIN. REFLOW TREATMENT (PRE-PLATED)

3.△トレードマーク : MXプラス1文字の製造工場を示す
アルファベットにて表示。
但し"J"はJAPANを示す。
FORMED BY MX AND 1 MORE LETTER OF ALPHABET
WHICH MEAN THE MANUFACTORY.
BUT "J" MEANS JAPAN. (TO TRADE MARK) (ex MXJ)
ELV AND RoHS COMPLIANT

4.適用電線サイズ AWG#18 ~ 22
APPLICABLE WIRE AWG#18 ~ 22

5.被覆外径 : 1.55 ~ 2.6mm
INSULATION OUTSIDE DIAMETER : 1.55 ~ 2.6mm

6.製品仕様書及び取り扱いについては、製品仕様書
5056050000PS000、コネクタ取扱説明書 5056050000PSA00,A01
を参照願います。
PLEASE REFER TO PRODUCTS SPECIFICATION
5056050000PS000 AND USER'S MANUAL 5056050000PSA00,A01.

7.圧着仕様書については、5056070000PSC00を参照願います。
PLEASE REFER TO CRIMPING SPECIFICATION
5056070000PSC00.

8.圧着端子の注意事項としてATS-57427-0000 を参照
AS ATTENTION AT THE TIME OF CRIMP REFER TO
ATS-57427-0000.

POLY BAG	5056080100	バラ状 LOOSE
REEL	5056080000	連鎖状 CHAIN
PACKAGING SPEC.	オーダー番号 ORDER NO.	形態 FORM
CONNECTOR SERIES NO. 5056080*00		

THIS DRAWING CONTAINS INFORMATION THAT IS PROPRIETARY TO MOLEX ELECTRONIC TECHNOLOGIES, LLC AND SHOULD NOT BE USED WITHOUT WRITTEN PERMISSION												
DIMENSION UNITS		SCALE		CURRENT REV DESC:			<div>molex</div>					
mm		10:1										
GENERAL TOLERANCES (UNLESS SPECIFIED)				EC NO: 176827 DRWN: NITO 2018/05/18 CHK'D: SAKIYAMA 2018/05/18 APPR: TKANEKO 2018/05/18 INITIAL REVISION: DRWN: NITO 2017/05/16 APPR: TKANEKO 2017/06/16			CP 3.3 W/W PLUG CRIMP TERMINAL					
ANGULAR TOL ± 3.0 °							PRODUCT CUSTOMER DRAWING					
4 PLACES		± 0.2					DOCUMENT NUMBER			DOC TYPE	DOC PART	REVISION
3 PLACES		± 0.2					5056080000			PSD	000	C
2 PLACES		± 0.2										
1 PLACE		± 0.2										
0 PLACES		± 0.2										
DRAFT WHERE APPLICABLE MUST REMAIN WITHIN DIMENSIONS				THIRD ANGLE PROJECTION		DRAWING	SERIES	MATERIAL NUMBER		CUSTOMER	SHEET NUMBER	
						A3-SIZE	505608			GENERAL	1 OF 1	

DOCUMENT STATUS	P1	RELEASE DATE	2018/05/18	07:54:44
-----------------	----	--------------	------------	----------