



Chipsmall Limited consists of a professional team with an average of over 10 year of expertise in the distribution of electronic components. Based in Hongkong, we have already established firm and mutual-benefit business relationships with customers from,Europe,America and south Asia,supplying obsolete and hard-to-find components to meet their specific needs.

With the principle of “Quality Parts,Customers Priority,Honest Operation,and Considerate Service”,our business mainly focus on the distribution of electronic components. Line cards we deal with include Microchip,ALPS,ROHM,Xilinx,Pulse,ON,Everlight and Freescale. Main products comprise IC,Modules,Potentiometer,IC Socket,Relay,Connector.Our parts cover such applications as commercial,industrial, and automotives areas.

We are looking forward to setting up business relationship with you and hope to provide you with the best service and solution. Let us make a better world for our industry!



## Contact us

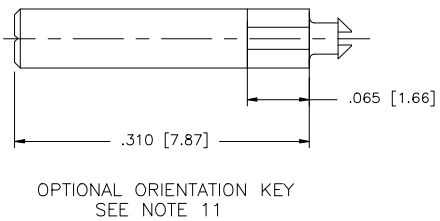
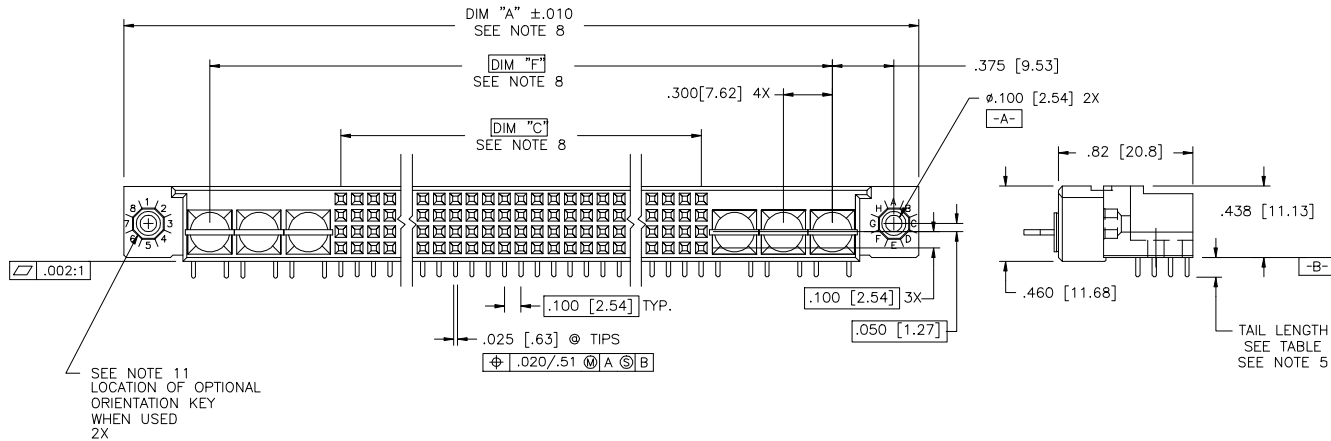
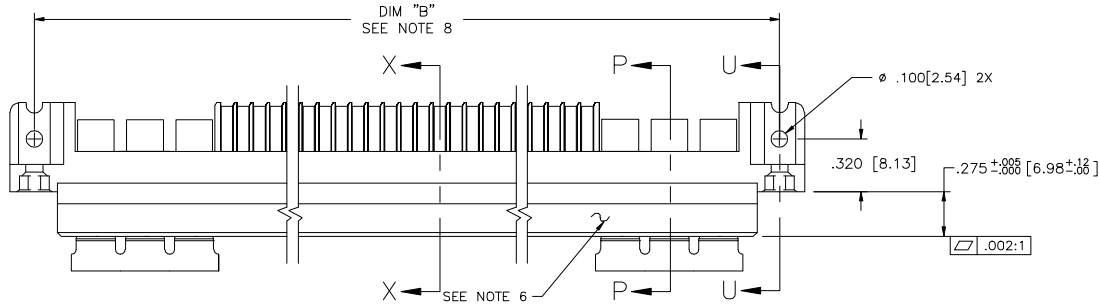
Tel: +86-755-8981 8866 Fax: +86-755-8427 6832

Email & Skype: info@chipsmall.com Web: www.chipsmall.com

Address: A1208, Overseas Decoration Building, #122 Zhenhua RD., Futian, Shenzhen, China



PRODUCT NUMBER  
SEE NOTE 1



mal't. code		NOTE 3		surface	ISO 1302	tolerance	ISO 406	projection	product family
ltr		ec'n no	dr	date	tolerances unless otherwise specified			 INCH/MM	HPC
B	v30297	JM	2/9/93		angles	linear	.XX ±.01/XX±0.3		title 4 ROW R/A RECEPTACLE SOLDER TAIL, 0 G.P., 6 P.P.
C	v40243	PDP	1/13/94				.XXX ±.005/XXX±0.13	scale 1:1	
D	v90135	DLW	4/5/99		σ±2		.XXX ±.0020/XXX±0.051		
E	v00256	LSS	1/13/00	dr	D. SHEAFFER	9/15/92		dwg no 50565	
F	v05-0737	DAI	9/21/05	engr	S. CLARK	9/15/92		sheet 1 of 3 A3	
G	M08-0280	AGS	9/30/08	chr	S. CLARK	9/15/92		type Product Customer Drawing	
				appd	S. CLARK	9/15/92			
sheet	revision	C	C	C					
index	sheet	1	2	3					

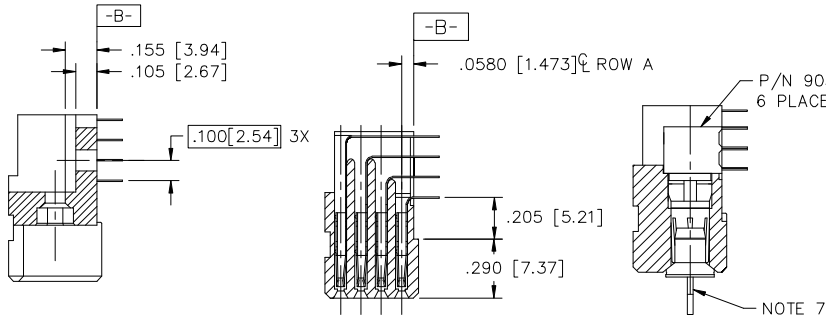
PRODUCT NUMBER  
SEE NOTE 1

NOTES:

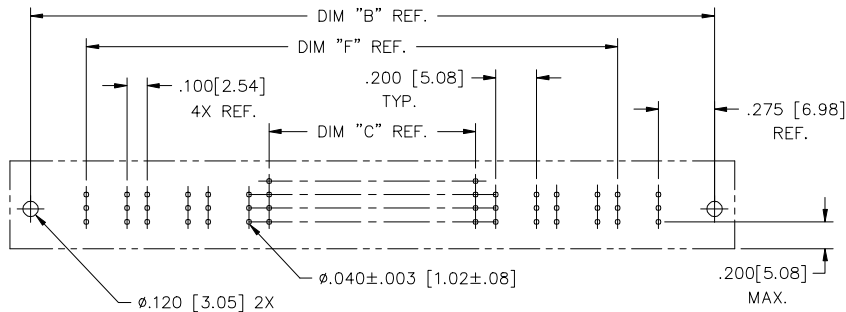
- ①. PRODUCT NUMBERING CODE:  
50565 - X YYY Z LF  
LEAD FREE (OPTIONAL)  
TAIL LENGTH SEE TABLE, SEE NOTE 5  
NO. OF POSITIONS SEE NOTE 2  
PLATING SEE NOTE 4  
BASE NUMBER

- PRODUCT NUMBERING CODE FOR  
SELECT LOAD PART NUMBERS:  
50565 - XYYYY LF  
LEAD FREE (OPTIONAL)  
SEQUENCE NUMBER  
ALWAYS 'XX'  
BASE NUMBER

- ②. THIS PRODUCT IS CONFIGURED IN SIZES OF  
6 THRU 80 COLUMNS IN INCREMENTS OF ONE.  
i.e.: 6,7,8,9.....79,80.
- ③. HOUSING MATERIAL: GLASS AND MINERAL FILLED  
HI-TEMP THERMOPLASTIC, FLAME RETARDANT  
PER UL94V-0 COLOR: BLANK  
CONTACT MATERIAL: BeCu
4. PLATING:  
SEE TABLE FOR CONTACT AREA AND SOLDER TAIL PLATING  
OF SIGNAL LINES.  
POWER CONTACTS ARE PLATED WITH  $30\mu"/.76\mu$  MIN Au OR GXT,  
OR  $50\mu"/1.27\mu$  MIN Ni IN CONTACT AREA AND HAVE THE  
SAME TAIL PLATING AS THE SIGNAL CONTACTS FOR  
CORRESPONDING PRODUCT NUMBER.
5. TAIL LENGTHS: ALL POWER TAILS ARE 1.45/3.68  
SEE TABLE FOR SIGNAL TAIL LENGTHS
- ⑥. MANUFACTURERS NAME, PART NUMBER AND LOT CODE  
TO APPEAR ON THIS SURFACE PER BUS-12-108.
- ⑦. POWER SOCKET LOCATOR (P/N 50233) TO BE REMOVED  
AFTER SOLDERING OPERATION.
- ⑧. LENGTH FORMULAS:  
DIM A =  $100/2.54 \times \text{NO. OF COLUMNS} + 2.55/64.8$   
DIM B =  $100/2.54 \times \text{NO. OF COLUMNS} + 2.250/57.15$   
DIM C =  $100/2.54 \times \text{NO. OF COLUMNS} - .100/2.54$   
DIM F =  $100/2.54 \times \text{NO. OF COLUMNS} + 1.500/38.10$
9. THE PRODUCTS (WITH "LF" SUFFIX) MEET EUROPEAN UNION DIRECTIVES  
AND OTHER COUNTRY REGULATIONS AS DESCRIBED IN GS-22-008.
10. THIS HOUSING WILL WITHSTAND EXPOSURE TO 260° C PEAK  
TEMPERATURE FOR 10-30 SECONDS IN A CONVECTION, INFRA-RED,  
VAPOR PHASE REFLOW OVEN.
- ⑪. WHERE APPLICABLE, THE OPTIONAL ORIENTATION KEYS ARE BAGGED  
SEPERATELY AND INCLUDED IN THE SAME BOX WITH THE  
CONNECTORS.
- ⑫. PLATING OPTION:  
MAY BE EITHER GOLD OR GXT PLATED AT MANUFACTURER'S OPTION.



SECTION U-U      SECTION X-X      SECTION P-P



RECOMMENDED PCB LAYOUT  
(ALL HOLES LOCATED ON .100 [2.54] GRID  
UNLESS OTHERWISE SPECIFIED)

mat'l. code	NOTE 3	surface	ISO 1902	tolerance	ISO 406	projection	product family
ltr	ecp no	dr	date	tolerances unless otherwise specified		INCH/MM	HPC
G				angles	linear		title
						scale 1:1	4 ROW R/A RECEPTACLE SOLDER TAIL, 0 G.P., 6 P.P.
		dr	D. SHEAFFER	9/15/92		FCJ	dwg no
		enrg	S. CLARK	9/15/92			sheet 2 of 3
		chr	S. CLARK	9/15/92			size
		appd	S. CLARK	9/15/92			A3
sheet	revision						type
index	sheet						Product Customer Drawing

PRODUCT NUMBER	NUMBER OF POSITIONS SEE NOTE 2	OPTIONAL ORIENTATION KEY SEE NOTE 11	TAIL LENGTH OF SIGNAL TAILS	SOLDER TAIL PLATING	CONTACT AREA PLATING SEE NOTE 4 & 11
50565 -1YYYYE	YYY	-	.125±.010/3.18±0.25	TIN-LEAD	30μ"/0.76μ GOLD
50565 -1YYYYF	YYY	-	.145±.010/3.68±0.25	TIN-LEAD	30μ"/0.76μ GOLD
50565 -1YYYYH	YYY	-	.180±.010/4.57±0.25	TIN-LEAD	30μ"/0.76μ GOLD
50565 -3YYYYE	YYY	-	.125±.010/3.18±0.25	TIN-LEAD	50μ"/1.27μ GOLD
50565 -3YYYYF	YYY	-	.145±.010/3.68±0.25	TIN-LEAD	50μ"/1.27μ GOLD
50565 -3YYYYH	YYY	-	.180±.010/4.57±0.25	TIN-LEAD	50μ"/1.27μ GOLD
50565 -5YYYYE	YYY	-	.125±.010/3.18±0.25	TIN-LEAD	30μ"/0.76μ GXT
50565 -5YYYYLF	YYY	-	.125±.010/3.18±0.25	TIN	30μ"/0.76μ GXT
50565 -5YYYYF	YYY	-	.145±.010/3.68±0.25	TIN-LEAD	30μ"/0.76μ GXT
50565 -5YYYYFLF	YYY	-	.145±.010/3.68±0.25	TIN	30μ"/0.76μ GXT
50565 -5YYYYH	YYY	-	.180±.010/4.57±0.25	TIN-LEAD	30μ"/0.76μ GXT
50565 -5YYYYHLF	YYY	-	.180±.010/4.57±0.25	TIN	30μ"/0.76μ GXT
50565 -XX006	60	YES	.125±.010/3.18±0.25	TIN-LEAD	30μ"/0.76μ GOLD
50565 -XX006LF	60	YES	.125±.010/3.18±0.25	TIN	30μ"/0.76μ GXT
50565 -XX006A	60	-	.125±.010/3.18±0.25	TIN-LEAD	30μ"/0.76μ GOLD
50565 -XX006ALF	60	-	.125±.010/3.18±0.25	TIN	30μ"/0.76μ GXT
50565 -XX007	60	YES	.125±.010/3.18±0.25	TIN-LEAD	30μ"/0.76μ GOLD
50565 -XX007LF	60	YES	.125±.010/3.18±0.25	TIN	30μ"/0.76μ GXT
50565 -XX007A	60	-	.125±.010/3.18±0.25	TIN-LEAD	30μ"/0.76μ GOLD
50565 -XX007ALF	60	-	.125±.010/3.18±0.25	TIN	30μ"/0.76μ GXT



FCIconnect.com

Copyright FCI

mat'l. code NOTE 3				surface ISO 1302	tolerance ISO 406 ISO 1101	projection 	product family HPC
ltr	ecn no	dr	date	tolerances unless otherwise specified			title 4 ROW R/A RECEPTACLE SOLDER TAIL, 0 G.P., 6 P.P.
G				angles	linear		
				0±2'	.XX ±.01/XX±0.3 .XXX ±.005/XXX±0.13 XXXX ±.0020/XXX±0.051		dwg no 50565
				dr	D. SHEAFFER	9/15/92	sheet 3 of 3
				engr	S. CLARK	9/15/92	size A3
				chr	S. CLARK	9/15/92	
				appd	S. CLARK	9/15/92	type Product Customer Drawing
sheet index	revision sheet						

form A3 1 2 3 4 5 6