



Chipsmall Limited consists of a professional team with an average of over 10 year of expertise in the distribution of electronic components. Based in Hongkong, we have already established firm and mutual-benefit business relationships with customers from,Europe,America and south Asia,supplying obsolete and hard-to-find components to meet their specific needs.

With the principle of "Quality Parts,Customers Priority,Honest Operation,and Considerate Service",our business mainly focus on the distribution of electronic components. Line cards we deal with include Microchip,ALPS,ROHM,Xilinx,Pulse,ON,Everlight and Freescale. Main products comprise IC,Modules,Potentiometer,IC Socket,Relay,Connector.Our parts cover such applications as commercial,industrial, and automotives areas.

We are looking forward to setting up business relationship with you and hope to provide you with the best service and solution. Let us make a better world for our industry!



Contact us

Tel: +86-755-8981 8866 Fax: +86-755-8427 6832

Email & Skype: info@chipsmall.com Web: www.chipsmall.com

Address: A1208, Overseas Decoration Building, #122 Zhenhua RD., Futian, Shenzhen, China

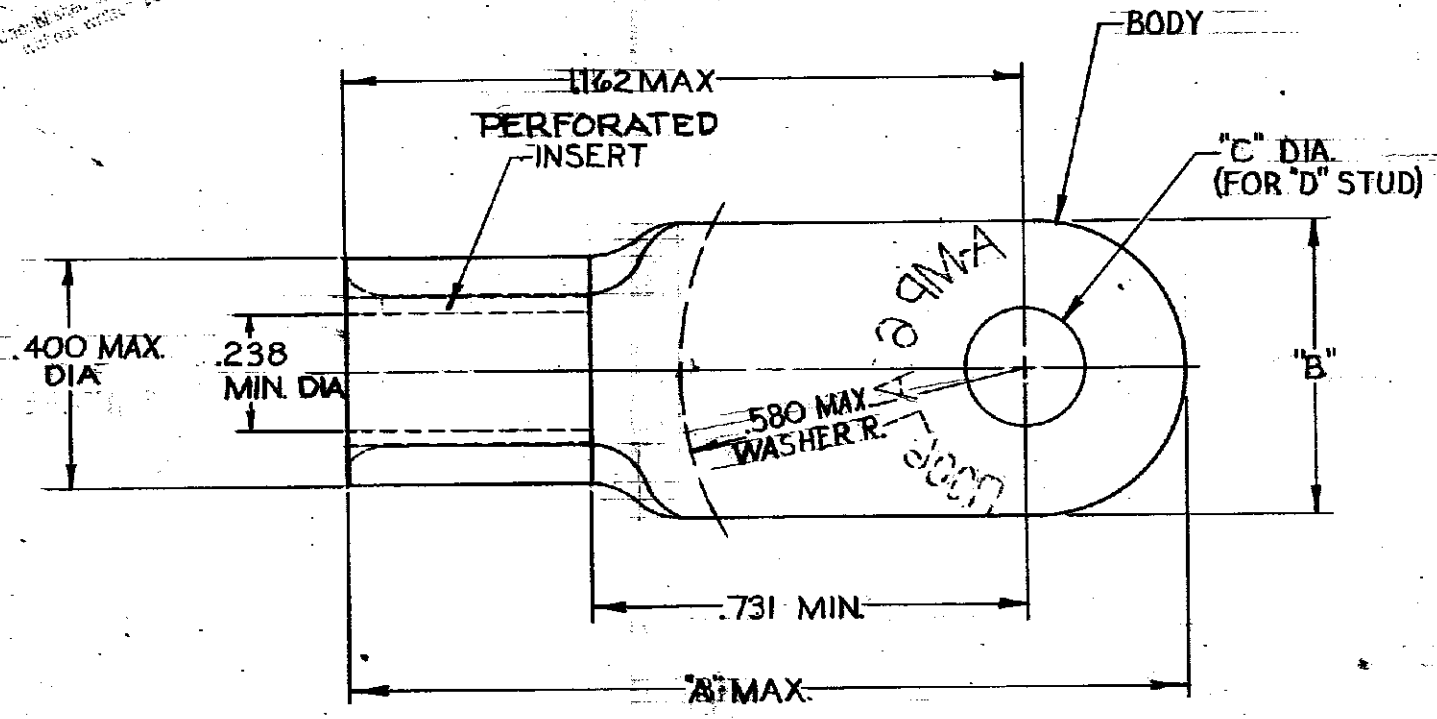


© 1966 BY AMP INCORPORATED. ALL RIGHTS RESERVED. AMP PRODUCTS COVERED BY PATENTS AND/OR PATENT PENDING.

NUMBER 50719

Use of this drawing not to be construed as a license or permission of any kind.

ZONE	LTR	REVISIONS DESCRIPTION	DATE	APPROVED
	O	PER NPS. 66-1760-1764	11-15-66	ST
	A	REMOVED ENGRG CONT PER REV NPS 66-1760-1764	7/10/67	RAW
	B	REV TITLE PER ECN PC-5545	12-6-68	RAW
	C	ADDED 50719-5 NPS 69-0554	12-16-69	AME
	D	ADDED 50719-6 NPS 75-1756	6-17-75	JWA
	E	REVISED PER G-1651	11/8/85	ppm
	F	OBSOLETE - 4-6 G-2508	7/23/87	ppm
	G	OBS - 5 PER S-2856	8/3/88	W.S.V.



INDUSTRIAL CONTROL

TABLE I

WIRE TERMINAL	SEE TABLE II	INSERT: BRASS (MIL-C-50) TIN PL (MIL-T-10727) TYPE I .0003 MIN THK	
		BODY: COPPER (QQ-C-576) TIN PL (MIL-T-10727) TYPE I	
QTY.	DESCRIPTION	PART NO.	MATERIAL & FINISH
	UNLESS OTHERWISE SPECIFIED DIM. ARE IN INCHES. TOLERANCES ON: DECIMALS ±.000 ANGLES ±5°	CONTRACT NO. #	AMP AMP INCORPORATED HARRISBURG, PENNSYLVANIA
	MATERIAL SEE TABLE I	DR AC. Youngblood 11-11-66	NAME WIRE TERMINAL
		APP'D Swabell 11-15-66	COPALUM-STRANDED/SOLID WIRE SIZE: #6
		DSGN APPD	SIZE B CODE IDENT NO. 00779 NUMBER 50719
		OTHER APPD	SCALE 4:1 WT CALC ACTUAL SHEET 1 OF 1

PART NO.	"A"	"B"	"C"	"D"	
50719-6	1.504	.679	.515 ±.003	1/2	OBSOLETE
50719-5	1.415	.500	.445 ±.003	6	OBSOLETE
50719-4			.453 ±.005	7/16	OBSOLETE
50719-3	1.504	.679	.390 ±.005	3/8	
50719-2			.328 ±.005	5/16	
50719-1	1.415	.500	.265 ±.005	1/4	
50719			.197 ±.003	10	

AMP INFO
LOC 686