



Chipsmall Limited consists of a professional team with an average of over 10 year of expertise in the distribution of electronic components. Based in Hongkong, we have already established firm and mutual-benefit business relationships with customers from,Europe,America and south Asia,supplying obsolete and hard-to-find components to meet their specific needs.

With the principle of “Quality Parts,Customers Priority,Honest Operation,and Considerate Service”,our business mainly focus on the distribution of electronic components. Line cards we deal with include Microchip,ALPS,ROHM,Xilinx,Pulse,ON,Everlight and Freescale. Main products comprise IC,Modules,Potentiometer,IC Socket,Relay,Connector.Our parts cover such applications as commercial,industrial, and automotives areas.

We are looking forward to setting up business relationship with you and hope to provide you with the best service and solution. Let us make a better world for our industry!



## Contact us

Tel: +86-755-8981 8866 Fax: +86-755-8427 6832

Email & Skype: info@chipsmall.com Web: www.chipsmall.com

Address: A1208, Overseas Decoration Building, #122 Zhenhua RD., Futian, Shenzhen, China



**Materials**

Outer shell: C3604 brass, nickel-plating  
 Front nut: C3604 brass, nickel-plating  
 Insulator: PPS (Polyphenylene sulfide) UL94 V-0, beige  
 Pin: C38500 brass, 0.2 µm gold-plated, solder cup style  
 Washer p/n 56-00006: cold rolled steel, nickel-plating  
 Nut p/n 56-00007: C3604 brass, nickel-plating

**Electrical Requirements**

Breakdown voltage: 0.85 kV rms (contact to contact), 0.70 kV rms (contact to shell)  
 Dielectric strength: 1 min @ 500 Vac  
 Insulation resistance: 10,000 MΩ @ 500 Vdc  
 Contact resistance: 30 mΩ or less, 5000 cycles

**Mechanical Requirements**

Insertion force: 1.02 kgf average  
 Withdrawal force: 0.82 kgf average  
 Latch force: 18.4 kgf average  
 Life cycle: 5000 minimum mating cycles at 300 cycles per hour  
 Shock resistance: 100g, 6 ms  
 Resistance to vibration: 10-2000 Hz, 15g

**Environmental Requirements**

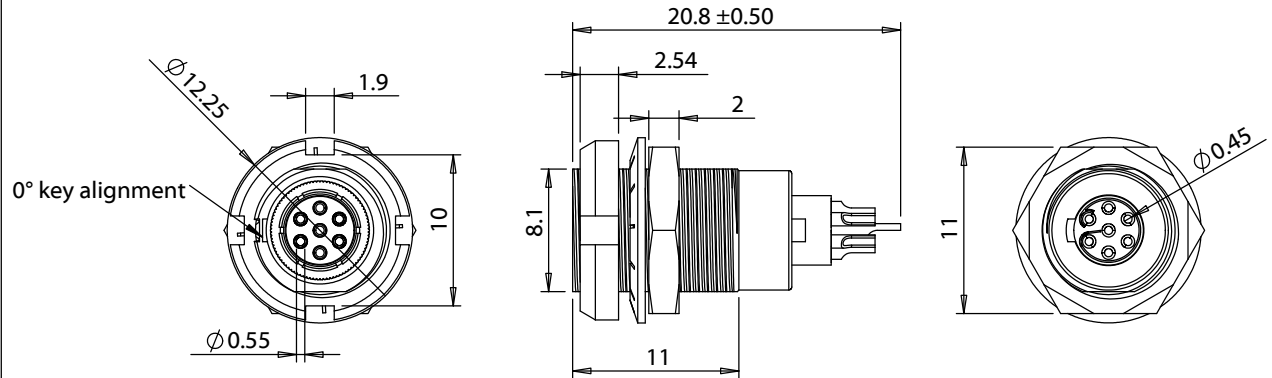
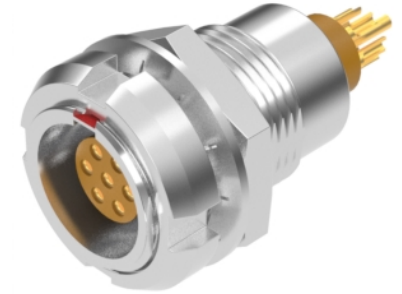
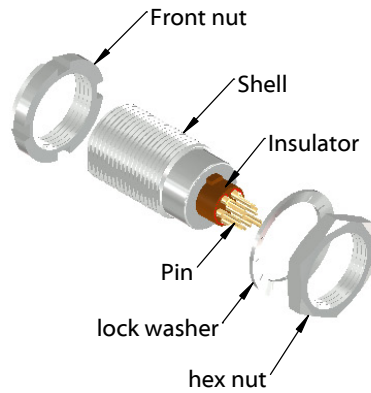
IP50 rating

**Assembly info**

Wire gauge: 28 AWG max (Ø0.35 mm)

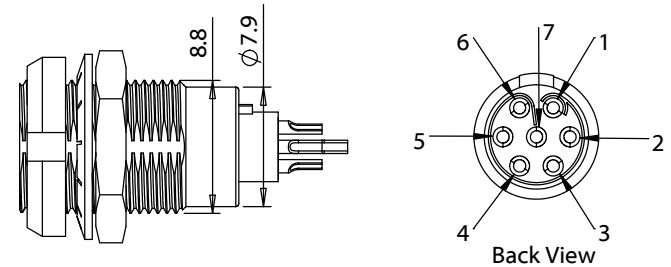
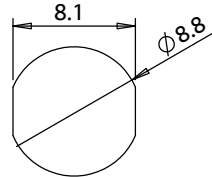
**Mating info**

Mates with PPL7 series plug (7 pin)



**Installation Details**

Panel thickness: 5.5 mm max  
 Panel cutout Ø: 8.8 - 11.75 mm  
 Connector layout:



Revision:	Date:	Description:
A	12/27/2017	Initial Release
A1	7/17/2018	Corrected length

Prepared: AG  
Digitally signed by AG  
 Date: 2018.07.17  
 11:48:22 -07'00'

Verified: JP  
Digitally signed by JP  
 Date: 2018.07.17  
 11:55:00 -07'00'

Dimensions are in millimeters.  
 Tolerances:  
 X: ± 0.5 mm  
 X.X: ± 0.3 mm  
 X.XX: ± 0.05 mm

Notes:  
 RoHS and REACH compliant

Function test: no open, no short circuit, no intermittent

Description:  
 Connector, PPL7, 7C, 0° panel socket, front-back mount, 7x21.7 mm, chrome, solder

**TENSILITY**

tel 1.541.323.3228 800 877.670.7118  
 fax 1.541.323.4202 web tensility.com

Size: A Part number: 51-00027

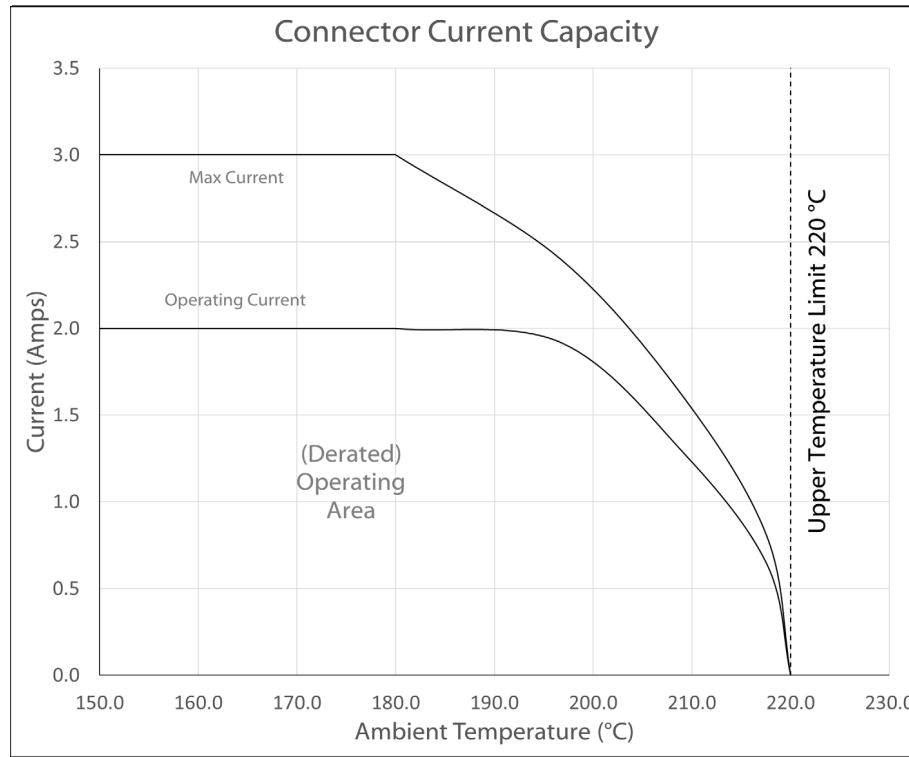
Scale: 2:1 Sheet 1 of 2

**Ratings**


Voltage: 300 V  
 Current: 2.0 A

**Operating Temperature Range**

-55 to 220 °C



Testing based on IEC 60512-5-2. Max current curve generated with isolated test article under controlled environmental conditions, and does not take into account external factors such as housings, mating cables, or other circuitry. Operating current curve (derated by 20% of maximum values) accounts for external factors, and manufacturing variation.

Revision:	Date:	Description:	Prepared:	Notes:	<b>TENSILITY</b> tel 1.541.323.3228 800 877.670.7118 fax 1.541.323.4202 web tensility.com
A	12/27/2017	Initial Release	AG <small>Digitally signed by AG Date: 2018.07.17 11:48:07 -07'00'</small>	RoHS and REACH compliant	
A1	7/17/2018	Corrected length	Verified:	Function test: no open, no short circuit, no intermittent	Size: Part number: A 51-00027
			Dimensions are in millimeters. Tolerances: X: ± 0.5 mm X.X: ± 0.3 mm X.XX: ± 0.05 mm	Description: Connector, PPL7, 7C, 0° panel socket, front-back mount, 7x21.7 mm, chrome, solder	Scale: 2:1  Sheet 2 of 2