



Chipsmall Limited consists of a professional team with an average of over 10 year of expertise in the distribution of electronic components. Based in Hongkong, we have already established firm and mutual-benefit business relationships with customers from,Europe,America and south Asia,supplying obsolete and hard-to-find components to meet their specific needs.

With the principle of “Quality Parts,Customers Priority,Honest Operation,and Considerate Service”,our business mainly focus on the distribution of electronic components. Line cards we deal with include Microchip,ALPS,ROHM,Xilinx,Pulse,ON,Everlight and Freescale. Main products comprise IC,Modules,Potentiometer,IC Socket,Relay,Connector.Our parts cover such applications as commercial,industrial, and automotives areas.

We are looking forward to setting up business relationship with you and hope to provide you with the best service and solution. Let us make a better world for our industry!



Contact us

Tel: +86-755-8981 8866 Fax: +86-755-8427 6832

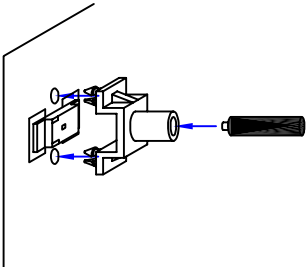
Email & Skype: info@chipsmall.com Web: www.chipsmall.com

Address: A1208, Overseas Decoration Building, #122 Zhenhua RD., Futian, Shenzhen, China



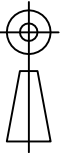
LIGHT PIPE

PREPARATION/INSTALLATION:



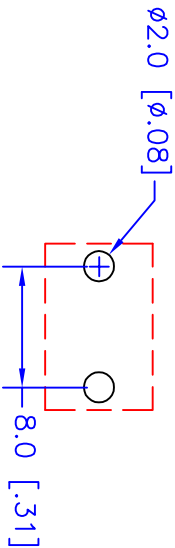
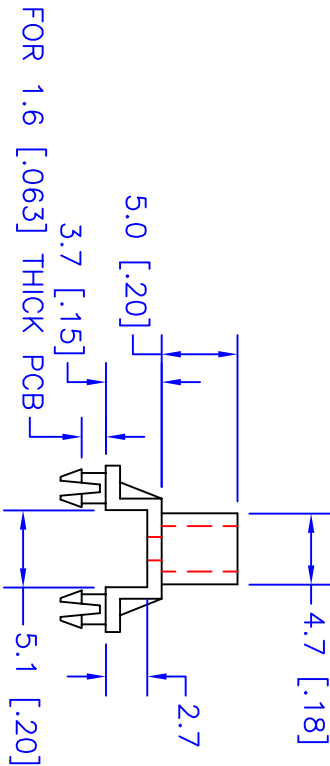
NOTES:

1. ROHS COMPLIANT
2. UL 94V-2 FLAMMABILITY RATING
3. -40°C TO 85°C OPERATING TEMPERATURE
4. SUITABLE FOR LIGHT PIPE WITH Ø3.0mm JACKET AND OPTICAL CORE NO GREATER THAN Ø1.5mm
5. DO NOT INSTALL PRIOR TO SOLDERING
6. FOR BEST RESULTS USE ONLY NARROW VIEWING ANGLE NON-DIFFUSED LEDS WITH OUTPUT POWER GREATER THAN 100mcd
7. NOT RECOMMENDED FOR DATA COMMUNICATIONS



METRIC

REVISIONS					
REV	DESCRIPTION	ECO	DATE	DWN	APVD
B	REVISED STRIP LENGTH FROM 1.0±.25	0034	09/17/09	BB	KS



RECOMMENDED PWB
DEVICE LAYOUT

PART IS MADE OF BLACK NYLON.

UNLESS OTHERWISE SPECIFIED		PRODUCT	INDUSTRIAL FIBER OPTICS			
DIMENSIONS		MATERIAL	TEMPE, AZ 85281			
MILLIMETERS [IN.]		NYLON 66	MOUNT, SURFACE MOUNT LED TO LIGHT PIPE			
TOLERANCES		FINISH	NAME			
0 PLC: ±1	SURFACE 3.2/	NONE				
1 PLC: ±.25	TEXTURE: √					
2 PLC: ±.127		DRAWN BY B. BIDWELL				
3 PLC: ±.025		DATE 11/12/08				
4 PLC: ±.013		CHECKED BY K. STOTZ				
ANGLE: ±1/2°		DATE 09/17/09				
REMOVE BURRS AND SHARP EDGES						
FLATNESS .005 MM PER MM						
ALL DIMENSIONS AFTER FINISH						

UNLESS OTHERWISE SPECIFIED		PRODUCT	INDUSTRIAL FIBER OPTICS			
DIMENSIONS		MATERIAL	TEMPE, AZ 85281			
MILLIMETERS [IN.]		NYLON 66	MOUNT, SURFACE MOUNT LED TO LIGHT PIPE			
TOLERANCES		FINISH	NAME			
0 PLC: ±1	SURFACE 3.2/	NONE				
1 PLC: ±.25	TEXTURE: √					
2 PLC: ±.127		DRAWN BY B. BIDWELL				
3 PLC: ±.025		DATE 11/12/08				
4 PLC: ±.013		CHECKED BY K. STOTZ				
ANGLE: ±1/2°		DATE 09/17/09				
REMOVE BURRS AND SHARP EDGES						
FLATNESS .005 MM PER MM						
ALL DIMENSIONS AFTER FINISH						

UNLESS OTHERWISE SPECIFIED		PRODUCT	INDUSTRIAL FIBER OPTICS			
DIMENSIONS		MATERIAL	TEMPE, AZ 85281			
MILLIMETERS [IN.]		NYLON 66	MOUNT, SURFACE MOUNT LED TO LIGHT PIPE			
TOLERANCES		FINISH	NAME			
0 PLC: ±1	SURFACE 3.2/	NONE				
1 PLC: ±.25	TEXTURE: √					
2 PLC: ±.127		DRAWN BY B. BIDWELL				
3 PLC: ±.025		DATE 11/12/08				
4 PLC: ±.013		CHECKED BY K. STOTZ				
ANGLE: ±1/2°		DATE 09/17/09				
REMOVE BURRS AND SHARP EDGES						
FLATNESS .005 MM PER MM						
ALL DIMENSIONS AFTER FINISH						