



Chipsmall Limited consists of a professional team with an average of over 10 year of expertise in the distribution of electronic components. Based in Hongkong, we have already established firm and mutual-benefit business relationships with customers from,Europe,America and south Asia,supplying obsolete and hard-to-find components to meet their specific needs.

With the principle of “Quality Parts,Customers Priority,Honest Operation,and Considerate Service”,our business mainly focus on the distribution of electronic components. Line cards we deal with include Microchip,ALPS,ROHM,Xilinx,Pulse,ON,Everlight and Freescale. Main products comprise IC,Modules,Potentiometer,IC Socket,Relay,Connector.Our parts cover such applications as commercial,industrial, and automotives areas.

We are looking forward to setting up business relationship with you and hope to provide you with the best service and solution. Let us make a better world for our industry!



Contact us

Tel: +86-755-8981 8866 Fax: +86-755-8427 6832

Email & Skype: info@chipsmall.com Web: www.chipsmall.com

Address: A1208, Overseas Decoration Building, #122 Zhenhua RD., Futian, Shenzhen, China



10 9 8 7 6 5 4 3 2 1

F

E

D

C

B

A

F

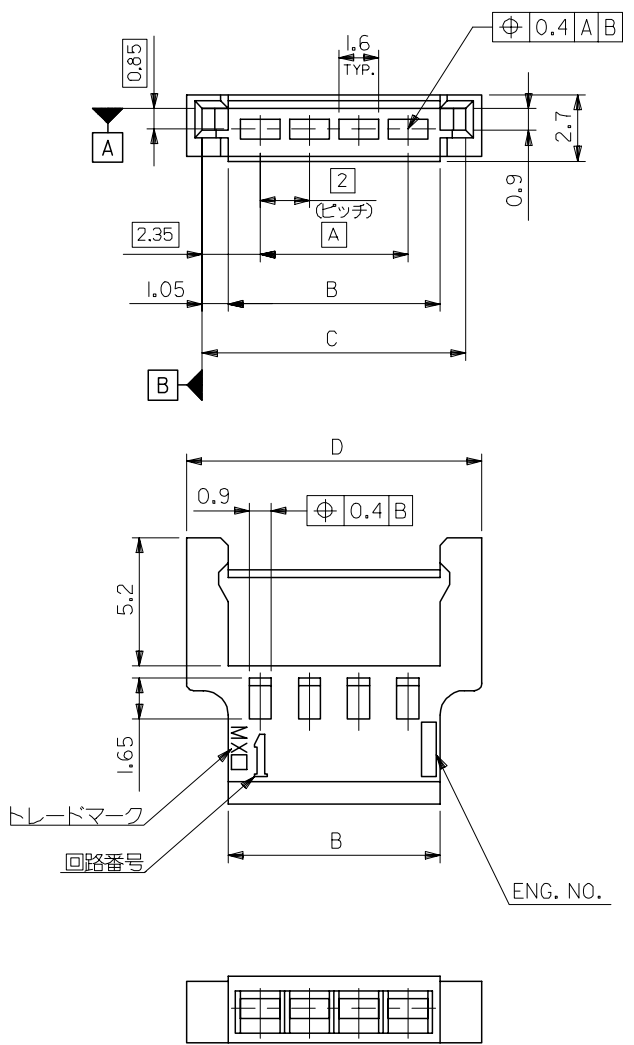
E

D

C

B

A



注記

1. 嵌合相手 : 51005
MATE WITH : 51005
2. 適合ターミナル : 50012
APPLICABLE TERMINAL : 50012
3. ELV 及び RoHS 適合品
ELV AND RoHS COMPLIANT.

14	12.7	10.6	8	51006-0500	5
12	10.7	8.6	6	↑ - 0400	4
10	8.7	6.6	4	↓ - 0300	3
8	6.7	4.6	2	51006-0200	2
D	C	B	A	MATERIAL NO.	極数

MATERIAL
PBTP (UL94V-0)

REVISED EC NO: J2008-0075 DRW: MNABEI 2007/07/16 CHKD: THARUYAMA 2007/07/17 APPR: NUKITA 2007/07/17	GENERAL TOLERANCES (UNLESS SPECIFIED)		DIMENSION STYLE MM ONLY		SCALE 5:1	DESIGN UNITS METRIC	THIRD ANGLE PROJECTION	
	10 UNDER	± 0.2	DRAWN BY S. MOCHIZUKI		DATE '89/08/22	TITLE 2.0 WIRE TO WIRE CONN. PLUG HOUSING		
	10 OVER 30 UNDER	± 0.25	CHECKED BY H. H.		DATE '90/05/16			
	30 OVER	± 0.3	APPROVED BY M. ENOMOTO		DATE '90/05/16	MOLEX INCORPORATED		
	ANGULAR	± 3 °	MATERIAL NO.		DOCUMENT NO. SD-51006-001			
DRAFT WHERE APPLICABLE MUST REMAIN WITHIN DIMENSIONS			SEE TABLE		THIS DRAWING CONTAINS INFORMATION THAT IS PROPRIETARY TO MOLEX INCORPORATED AND SHOULD NOT BE USED WITHOUT WRITTEN PERMISSION			