



Chipsmall Limited consists of a professional team with an average of over 10 year of expertise in the distribution of electronic components. Based in Hongkong, we have already established firm and mutual-benefit business relationships with customers from,Europe,America and south Asia,supplying obsolete and hard-to-find components to meet their specific needs.

With the principle of “Quality Parts,Customers Priority,Honest Operation,and Considerate Service”,our business mainly focus on the distribution of electronic components. Line cards we deal with include Microchip,ALPS,ROHM,Xilinx,Pulse,ON,Everlight and Freescale. Main products comprise IC,Modules,Potentiometer,IC Socket,Relay,Connector.Our parts cover such applications as commercial,industrial, and automotives areas.

We are looking forward to setting up business relationship with you and hope to provide you with the best service and solution. Let us make a better world for our industry!



## Contact us

Tel: +86-755-8981 8866 Fax: +86-755-8427 6832

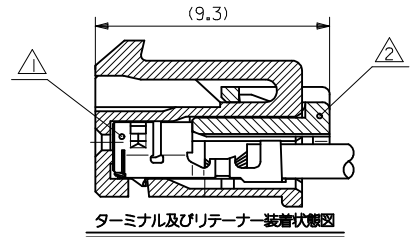
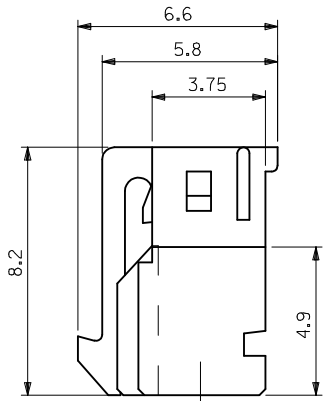
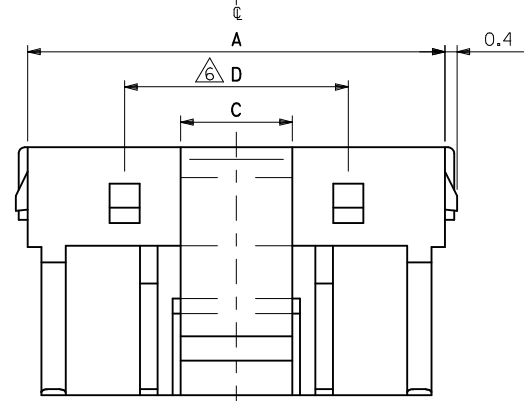
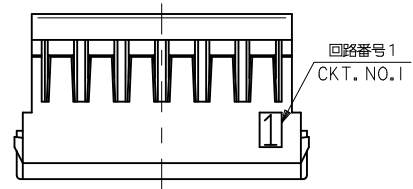
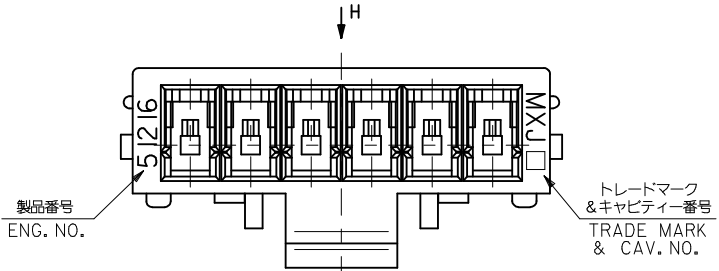
Email & Skype: info@chipsmall.com Web: www.chipsmall.com

Address: A1208, Overseas Decoration Building, #122 Zhenhua RD., Futian, Shenzhen, China

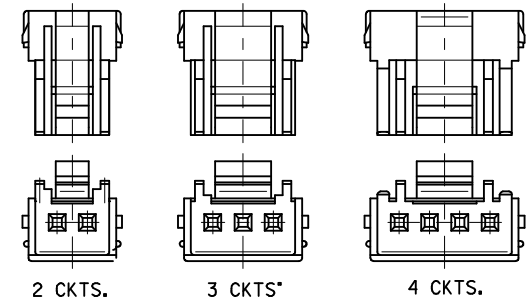
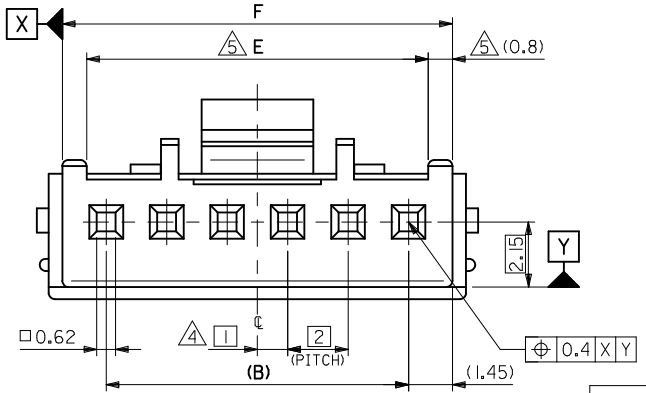


注記  
NOTES

- ① 適合ターミナル : 59370シリーズ  
APPLICABLE TERMINAL : 59370 SERIES
- ② 適合リテーナー : 51217シリーズ  
APPLICABLE RETAINER : 51217 SERIES
- 3. 嵌合相手 : 55487, 55755シリーズ  
MATE WITH : 55487, 55755
- ④ 偶数極に適用。  
APPLY EVEN CIRCUIT PRODUCTS.
- ⑤ 4~15極に適用。  
APPLY 4-15 CIRCUITS.
- ⑥ 5~15極に適用。  
APPLY 5-15 CIRCUITS.
- 7. ELVおよびRoHS適合品  
ELV AND RoHS COMPLIANT
- 8. ハウジングの色 (MATERIAL NO. の下1桁に対応) :  
HSG COLOR: WHITE : 51216-\*\*\*0  
BLACK : 51216-\*\*\*1  
RED : 51216-\*\*\*2  
YELLOW : 51216-\*\*\*3  
BLUE : 51216-\*\*\*4  
GREEN : 51216-\*\*\*6



ターミナル及びリテーナー装着状態図  
TERMINAL & RETAINER ASSEMBLY DRAWING



LAYOUT OF EACH CKTS.

F	E	D	C	B	A	MATERIAL NO.	CKT.	
30.9	29.3	7.4	3.7	28	31.8	51216-150*	15	
28.9	27.3			26	29.8	-140*	14	
26.9	25.3			24	27.8	-130*	13	
24.9	23.3			22	25.8	-120*	12	
22.9	21.3			20	23.8	-110*	11	
20.9	19.3			18	21.8	-100*	10	
18.9	17.3			16	19.8	-090*	9	
16.9	15.3			14	17.8	-080*	8	
14.9	13.3			12	15.8	-070*	7	
12.9	11.3			10	13.8	-060*	6	
10.9	9.3			8	11.8	-050*	5	
8.9	7.3	7.4		6	9.8	-040*	4	
6.9				3.7	4	7.8	-030*	3
4.9				2.2	2	5.8	51216-020*	2

材料 MATERIAL	PBTP, UL94V-0
仕上げ FINISH	—
適用電線範囲 WIRE RANGE	—
被覆外径 INS. RANGE	—

REVISED	EC NO: J2014-1352	2014/03/03
	DRWN: YAJI MA01	2014/03/04
	CHKD: KASAKAWA	2014/03/03
	APPR: NUKITA	2014/03/03
DESCRIPTION	GENERAL TOLERANCES (UNLESS SPECIFIED)	
REV	10 UNDER	±0.2
	10 OVER 30 UNDER	±0.25
	30 OVER	±0.3
	ANGULAR	±3 °
	DRAFT WHERE APPLICABLE MUST REMAIN WITHIN DIMENSIONS	

DIMENSION STYLE		SCALE	DESIGN UNITS
MM ONLY		---	METRIC
DRAWN BY	DATE	TITLE	
T. YASUI	'00/2/22	2.0MM WIRE TO BOARD RECEPTACLE HOUSING	
CHECKED BY	DATE		
T. YAMAGUCHI	'00/2/22		
APPROVED BY	DATE		
M. FUKUSHIMA	'00/2/22		
MATERIAL NO.	DOCUMENT NO.		
SEE TABLE	SD-51216-004		
SIZE	THIS DRAWING CONTAINS INFORMATION THAT IS PROPRIETARY TO MOLEX INCORPORATED AND SHOULD NOT BE USED WITHOUT WRITTEN PERMISSION		
A3			

**molex**

THIRD ANGLE PROJECTION

DOCUMENT NO. SD-51216-004

SHEET NO. 1 OF 1