



Chipsmall Limited consists of a professional team with an average of over 10 year of expertise in the distribution of electronic components. Based in Hongkong, we have already established firm and mutual-benefit business relationships with customers from,Europe,America and south Asia,supplying obsolete and hard-to-find components to meet their specific needs.

With the principle of “Quality Parts,Customers Priority,Honest Operation,and Considerate Service”,our business mainly focus on the distribution of electronic components. Line cards we deal with include Microchip,ALPS,ROHM,Xilinx,Pulse,ON,Everlight and Freescale. Main products comprise IC,Modules,Potentiometer,IC Socket,Relay,Connector.Our parts cover such applications as commercial,industrial, and automotives areas.

We are looking forward to setting up business relationship with you and hope to provide you with the best service and solution. Let us make a better world for our industry!



Contact us

Tel: +86-755-8981 8866 Fax: +86-755-8427 6832

Email & Skype: info@chipsmall.com Web: www.chipsmall.com

Address: A1208, Overseas Decoration Building, #122 Zhenhua RD., Futian, Shenzhen, China

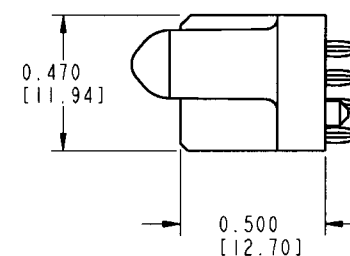
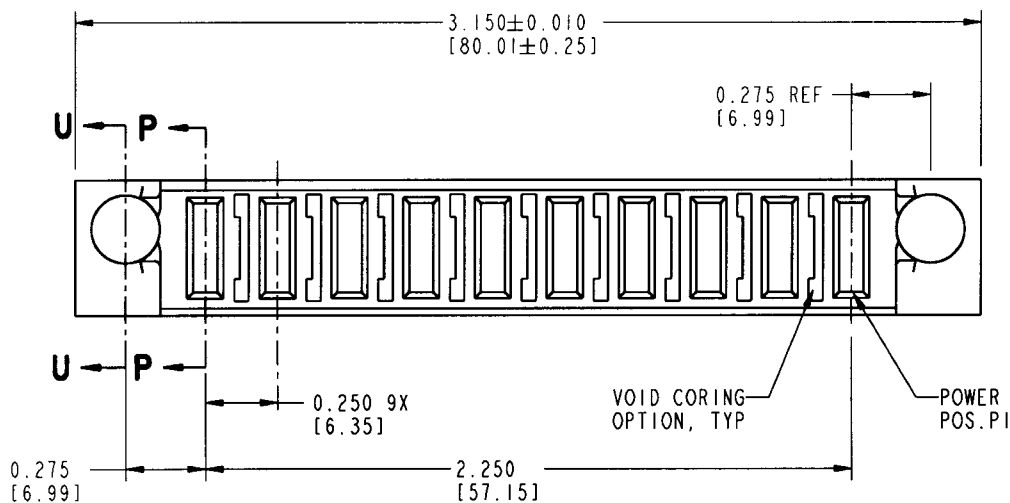
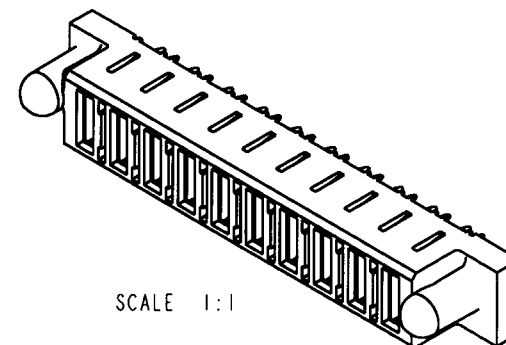
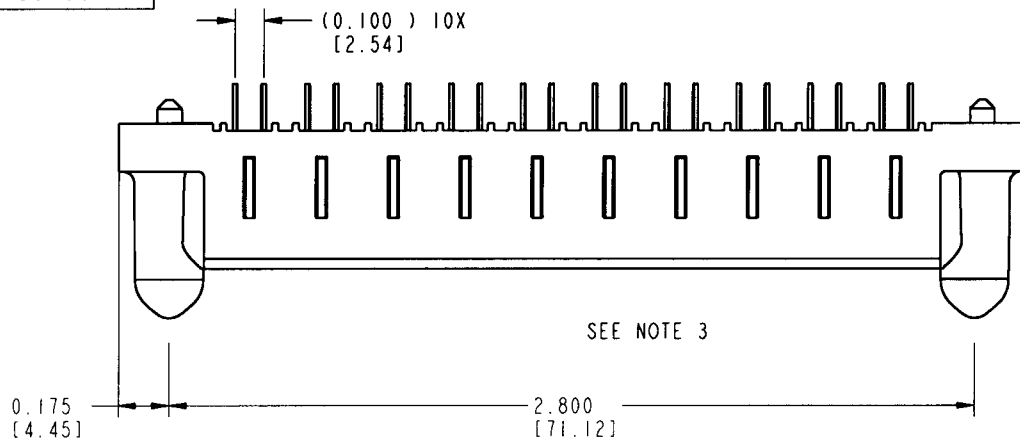


Tous droits strictement reserves. Reproduction ou communication a des tiers interalite sous quelque forme que ce soit sans autorisation ecrite du proprietaire. Propriete de c FCI. Droits de reproduction FCI.

All rights strictly reserved. Reproduction or issue to third parties in any form whatever is not permitted without written authority from the proprietor. Property of FCI. Copyright FCI.



PRODUCT NUMBER
51439-001



NOTE 1				tolerances unless otherwise specified		CUSTOMER COPY	FCI ELECTRONICS www.fciconnect.com		
lir	ecn no.	dr	date	linear	angular				
A	V91744	SAR	02-21-00	.XX ± .01/.X ± .3	.XXX ± .005/.XX ± .13	projection	title	IOP	
B	V01586	EKK	07-13-00	.XXX ± .0020/.XXX ± .051	0° ± 2°	IN/MM	product family	PwrBlade	code
C	V01897	CHB	08-11-00			scale	size	51439	213
				dr	C. BAROT	01-29-99			SHEET
				enr	J. BROWN	01-29-99			1 OF 3
				chr	J. BROWN	01-29-99			
				appd	J. BROWN	02-21-00			
sheet	revision	C	C	C					
index	sheet	1	2	3					

THIS FILE WAS ORIGINALLY CREATED IN THE PRO ENGINEER ENVIRONMENT AND ANY FUTURE REVISIONS TO THIS FILE MUST BE MADE IN THE PRO ENGINEER ENVIRONMENT

form no. 7530-001-103

PDM: Rev:C

STATUS: Released

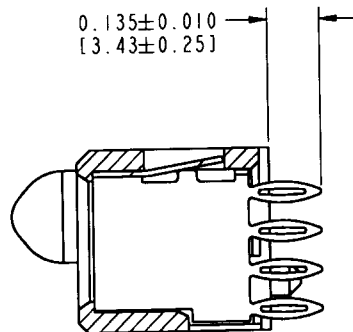
Printed: Dec 20, 2010

Tous droits strictement réservés. Reproduction ou communication à des tiers interdite sous quelque forme que ce soit sans autorisation écrite du propriétaire. Propriété de c FCI. Droits de reproduction FCI.

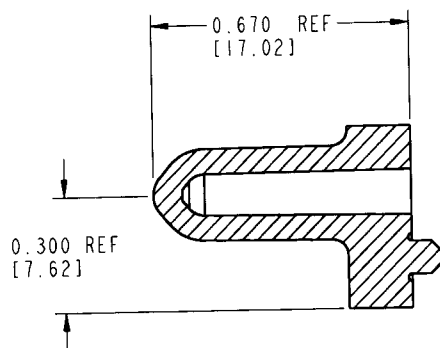


All rights strictly reserved. Reproduction or issue to third parties in any form whatever is not permitted without written authority from the proprietor. Property of FCI. Copyright FCI.

PRODUCT NUMBER
51439-001



SECTION P-P



SECTION U-U

CONNECTOR NOTES:

- ① HOUSING MATERIAL: GLASS FILLED HIGH TEMP THERMOPLASTIC, FLAME RETARDANT PER UL94V-0
POWER CONTACT MATERIAL: COPPER ALLOY
2. PLATING OPTIONS:
POWER CONTACTS: 50u"/1.27u Ni UNDER ALL: WITH 30u"/.76u Au ON CONTACT AREA, AND SnPb ON PCB INTERFACE.
- ③ MANUFACTURER NAME, P/N, AND DATE CODE TO APPEAR ON THIS SURFACE.

PCB NOTES:

4. ALL DIMENSIONS ARE BASIC UNLESS OTHERWISE SPECIFIED
5. ALL THROUGH HOLES ARE LOCATED WITH A TRUE POSITION OF 0.004"
6. ALL DIAMETERS ARE FINISHED HOLE SIZES
7. Ø0.0453/1.151 DRILLED HOLES, PLATED WITH 0.0003/0.007 MIN. SnPb OVER 0.001/1.03 TO 0.003/0.08 Cu PLATING TO ACHIEVE A Ø0.040±0.003/1.02±0.07 HOLE.

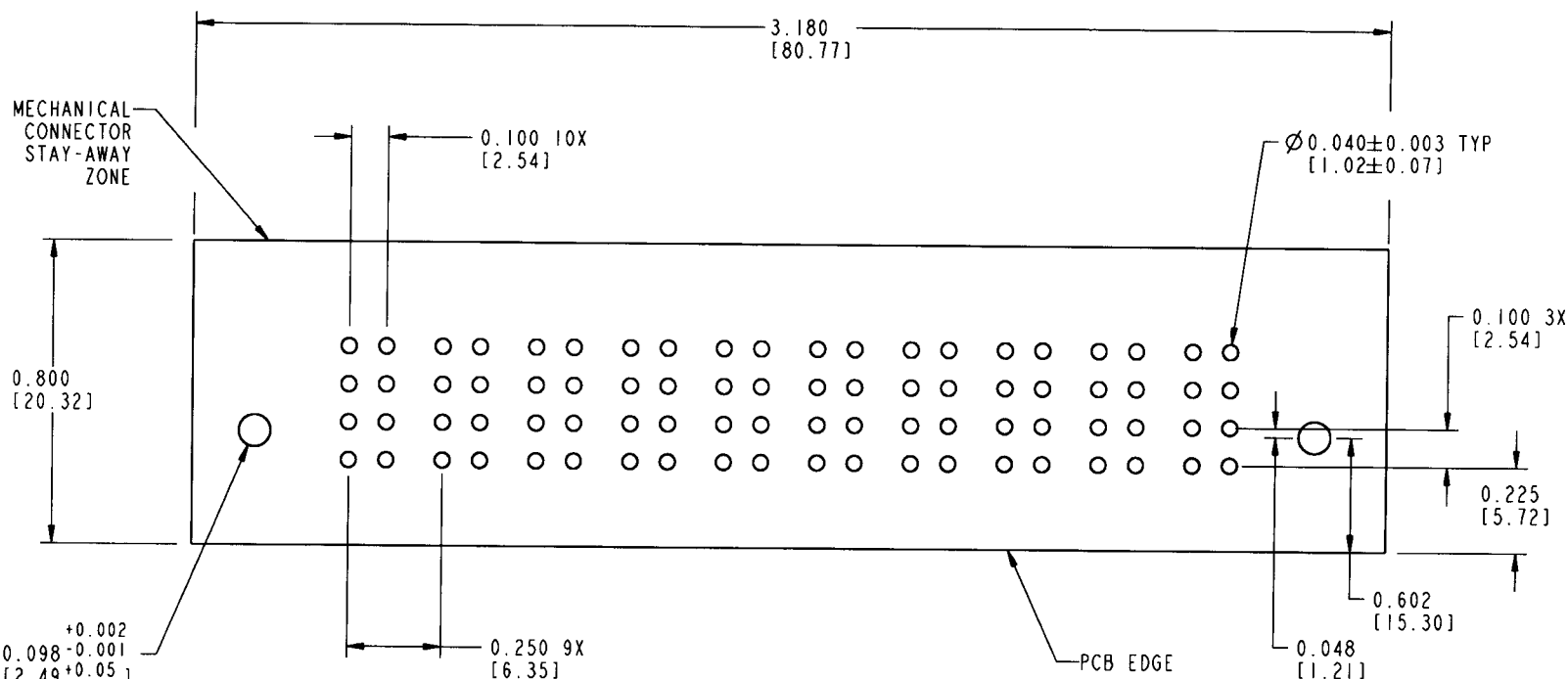
mat'l code				tolerances unless otherwise specified		CUSTOMER COPY		ELECTRONICS www.fciconnect.com	
ltr	ecn no.	dr	date	linear	.XX ±.01/.X ±.3	 IN/MM 2:1	title 10P VERTICAL PRESSFIT RECEPTACLE		
C					.XXX ±.005/.XX ±.13		product family PwrBlade code 213		
				angles	.XXX ±.0020/.XX ±.051		size dwg no 51439 SHEET 2		
				dr	0° ± 2°				
				enr	C. BAROT 01-29-99				
				chr	J. BROWN 01-29-99				
				appd	J. BROWN 02-21-00				
sheet index	revision sheet								
						cage code		22526	

Tous droits strictement réservés. Reproduction ou communication à des tiers interdite sous quelque forme que ce soit sans autorisation écrite du propriétaire. Propriété de c FCI. Droits de reproduction FCI.



All rights strictly reserved. Reproduction or issue to third parties in any form whatever is not permitted without written authority from the proprietor. Property of FCI. Copyright FCI.

PRODUCT NUMBER
51439-001



RECOMMENDED PCB LAYOUT

mat'l code				tolerances unless otherwise specified		CUSTOMER COPY	ELECTRONICS www.fciconnect.com
lfr	ecn no.	dr	date	linear	angles		
C				.XX ± .01 / .X ± .3	0° ± 2°	projection	title
				.XXX ± .005 / .XX ± .13			10P
				.XXXX ± .0020 / .XXX ± .051			VERTICAL PRESSFIT RECEPTACLE
				dr C. BAROT 01-29-99		1N/MM	product family PwrBlade
				enrg J. BROWN 01-29-99		scale 2:1	code 213
				chr J. BROWN 01-29-99			size
				appd J. BROWN 02-21-00			dwg no 51439
sheet index	revision sheet						SHEET 3

form no. 7530-001-103

PDM: Rev:C

STATUS: Released

Printed: Dec 20, 2010