



Chipsmall Limited consists of a professional team with an average of over 10 year of expertise in the distribution of electronic components. Based in Hongkong, we have already established firm and mutual-benefit business relationships with customers from,Europe,America and south Asia,supplying obsolete and hard-to-find components to meet their specific needs.

With the principle of "Quality Parts,Customers Priority,Honest Operation,and Considerate Service",our business mainly focus on the distribution of electronic components. Line cards we deal with include Microchip,ALPS,ROHM,Xilinx,Pulse,ON,Everlight and Freescale. Main products comprise IC,Modules,Potentiometer,IC Socket,Relay,Connector.Our parts cover such applications as commercial,industrial, and automotives areas.

We are looking forward to setting up business relationship with you and hope to provide you with the best service and solution. Let us make a better world for our industry!



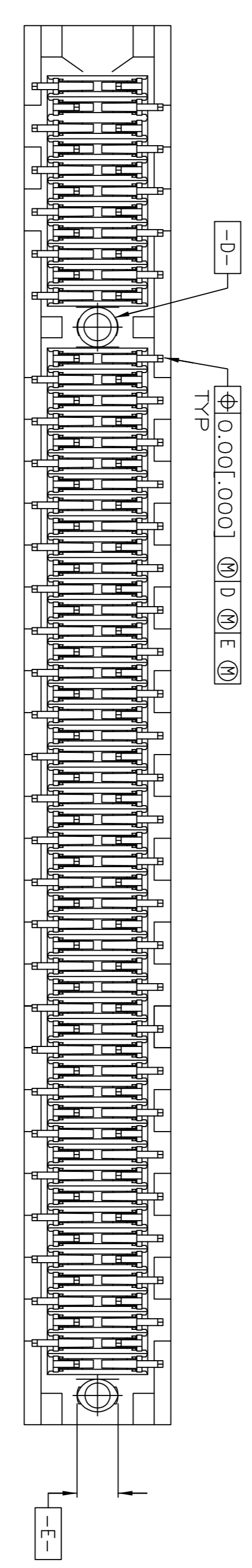
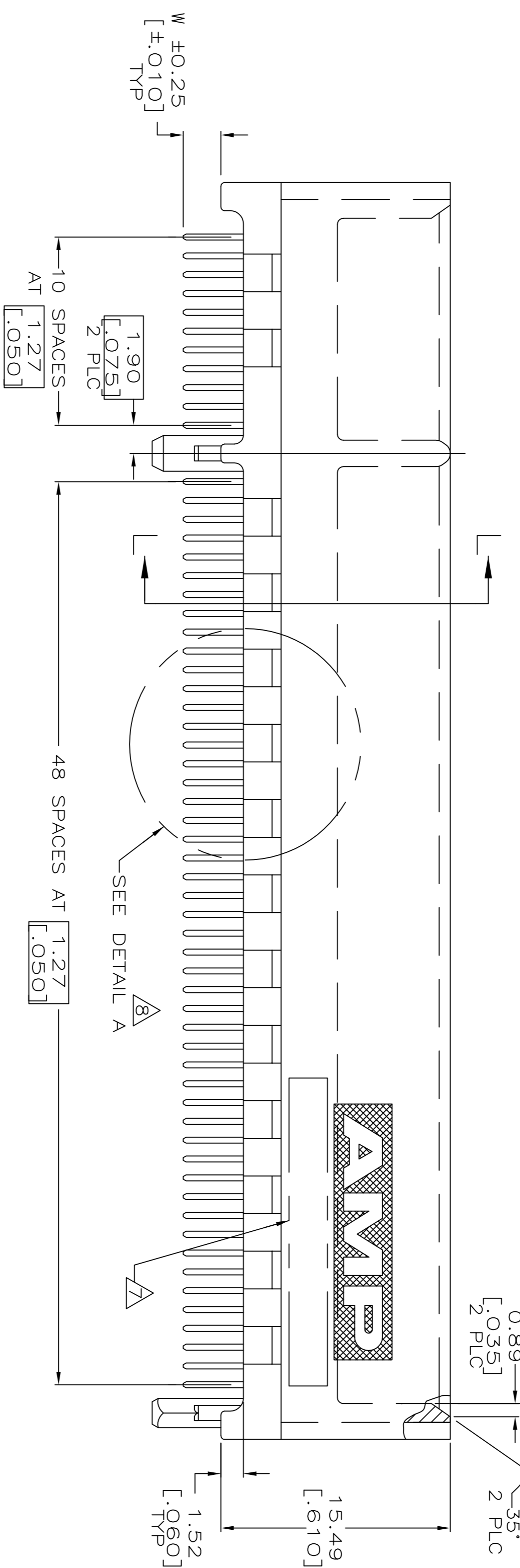
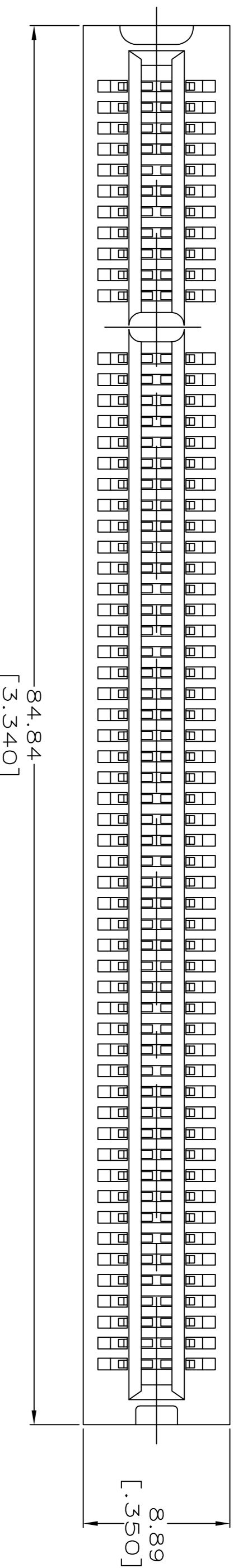
## Contact us

Tel: +86-755-8981 8866 Fax: +86-755-8427 6832

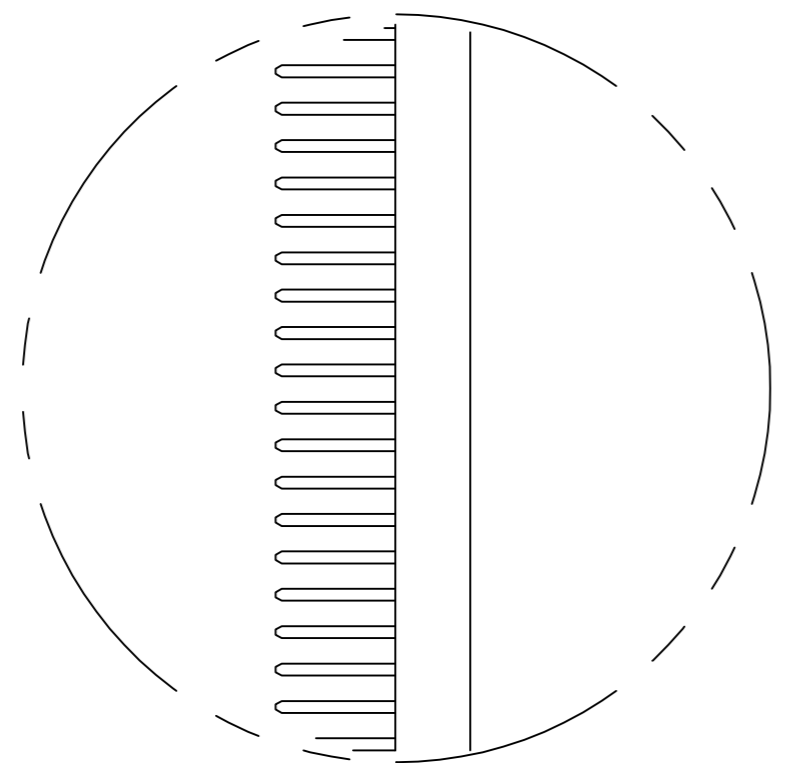
Email & Skype: info@chipsmall.com Web: www.chipsmall.com

Address: A1208, Overseas Decoration Building, #122 Zhenhua RD., Futian, Shenzhen, China

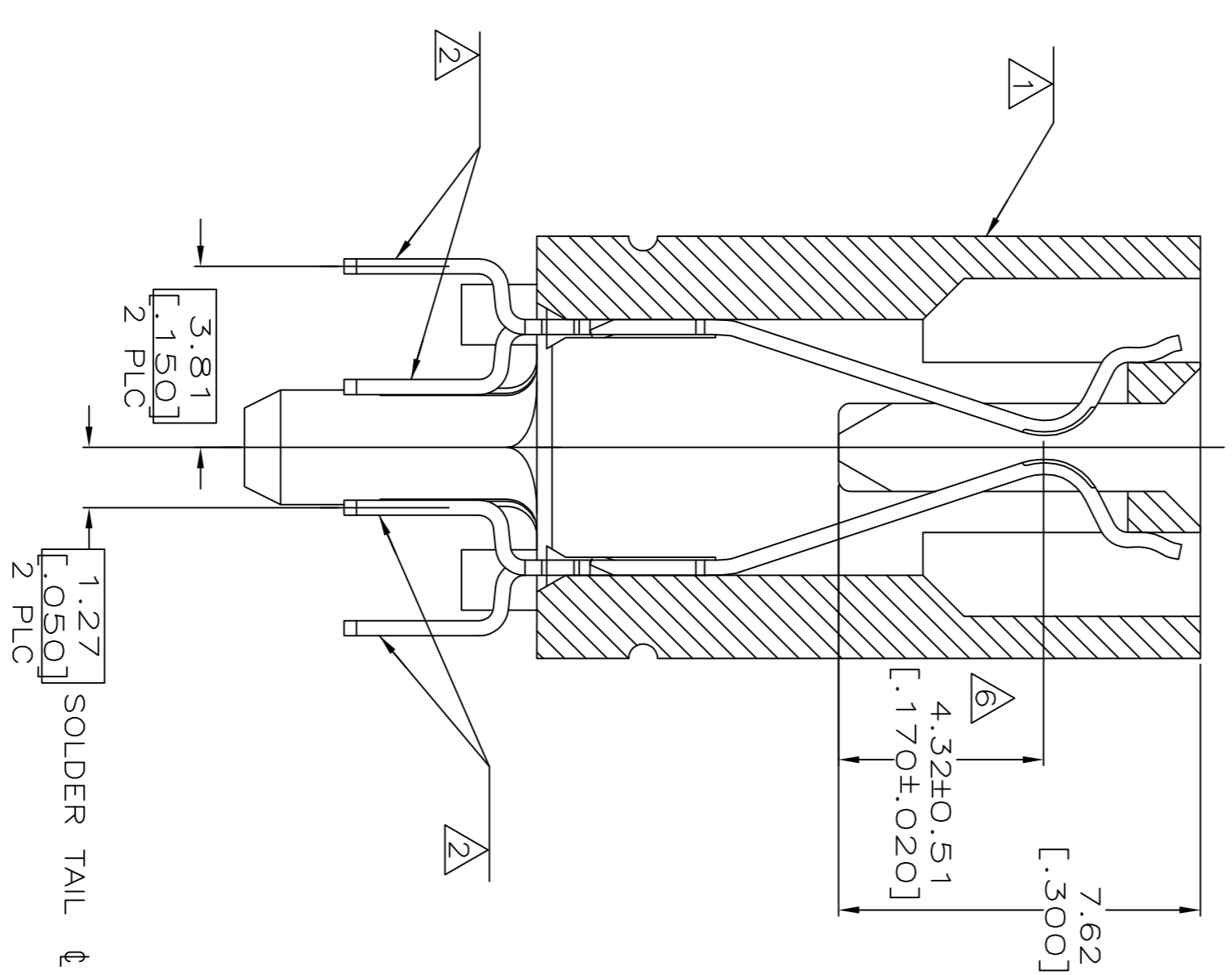




SEE SHEET 2 FOR HOLE PATTERN



DETAIL A



SECTION L-L  
SCALE 8:1

- 1 HOUSING: HIGH TEMPERATURE THERMOPLASTIC. COLOR - NATURAL
- 2 CONTACT: PHOSPHOR BRONZE.
- 3 CONTACT FINISH: .001269 [.000050] MIN NICKEL ALL OVER. GOLD FLASH OVER NICKEL IN CONTACT AREA. .002537 [.000100] MIN TIN OVER NICKEL ON SOLDER TAILS.
- 4 CONTACT FINISH: .001269 [.000050] MIN NICKEL ALL OVER. .000375 [.000015] MIN GOLD OVER NICKEL IN CONTACT AREA. .002537 [.000100] MIN TIN OVER NICKEL ON SOLDER TAILS.
- 5 CONTACT FINISH: .001269 [.000050] MIN NICKEL ALL OVER. .000757 [.000030] MIN GOLD OVER NICKEL IN CONTACT AREA. .002537 [.000100] MIN TIN OVER NICKEL ON SOLDER TAILS.
- 6 DISTANCE FROM CONTACT POINT TO BOTTOM OF CARD SLOT.
- 7 TE CONNECTIVITY PART NUMBER, DATE CODE AND CSA LOGO SHOULD BE MARKED ON THE SIDE OF THE HOUSING NEAR THE AMP LOGO.
- 8 CORED OR SOLID SIDE WALLS ARE AT DISCRETION OF TE CONNECTIVITY
- 9 PIN 44~49 AND PIN 104~109 ARE NOT LOADED.

QTY	DESCRIPTION	PART NUMBER	FINISH
3.56 [1.40]	1-5145154-2	W	
3.18 [1.25]	5145154-8		
2.54 [1.00]	5145154-4		
2.54 [1.00]	5145154-2		
2.54 [1.00]	5145154-1		

THIS DRAWING IS A CONTROLLED DOCUMENT. DATE: 20 MAR 04

CONNECTOR ASSEMBLY, 60 DUAL POSITION, CARD EDGE

STE

CONNECTOR ASSEMBLY, 60 DUAL POSITION, CARD EDGE

1.27 [0.050] SERIES, CARD EDGE

SIZE: 1.27 [0.050] SERIES, CARD EDGE

DATE CODE: 114-26012

WEIGHT: 1.14-26012

SIZE: 1.27 [0.050] SERIES, CARD EDGE

DATE CODE: 114-26012

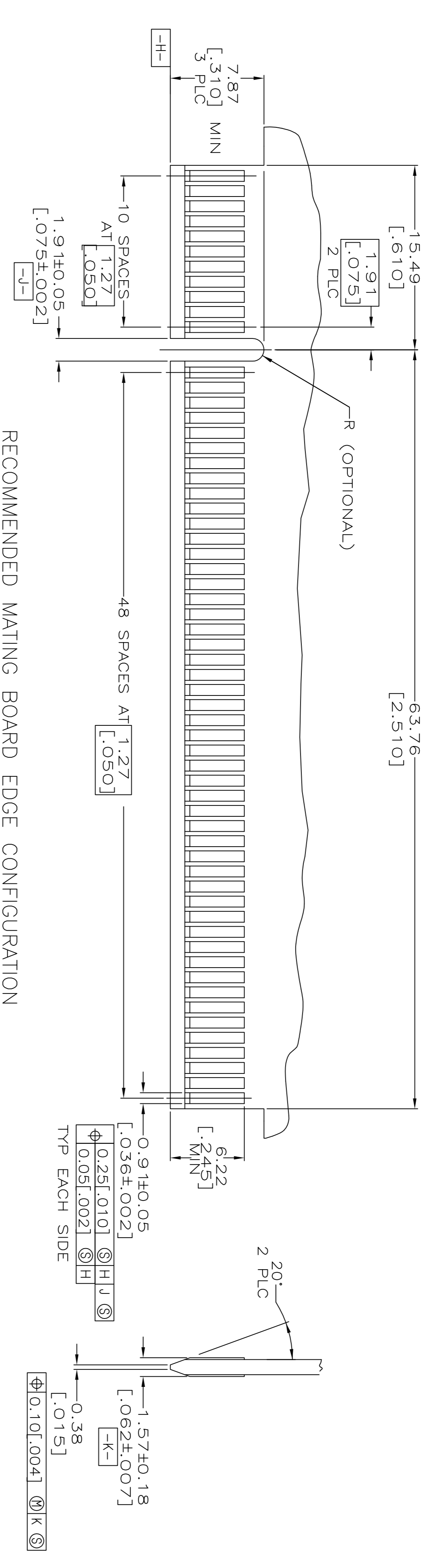
WEIGHT: 1.14-26012

SIZE: 1.27 [0.050] SERIES, CARD EDGE

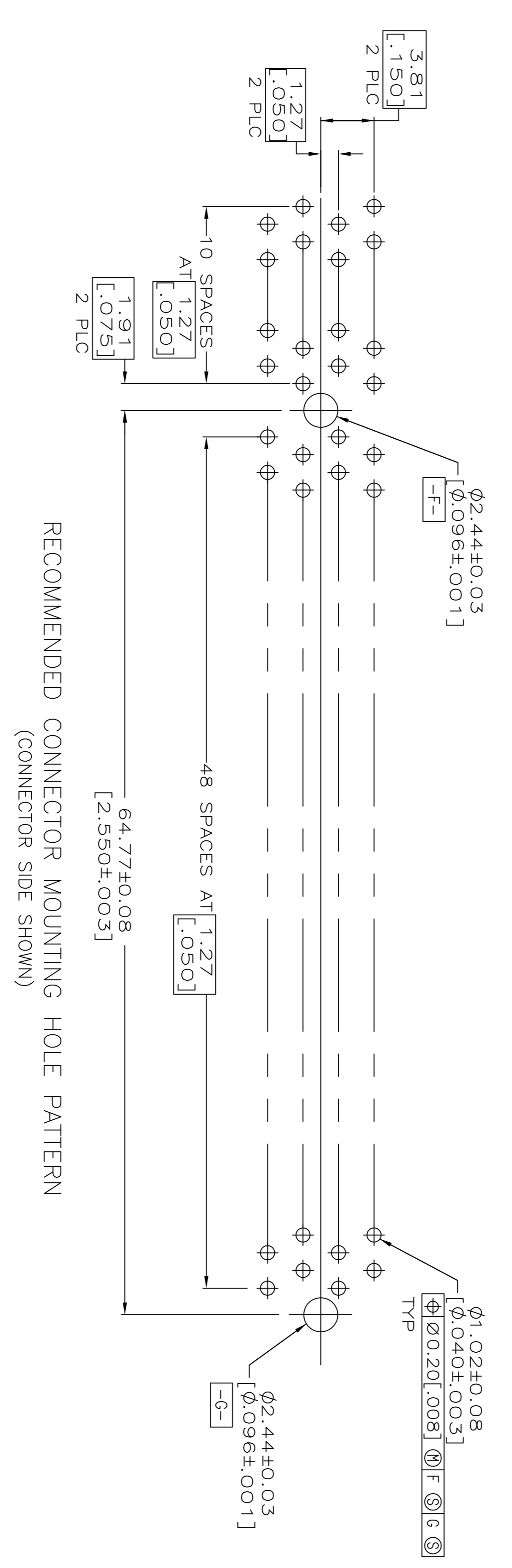
DATE CODE: 114-26012

WEIGHT: 1.14-26012

REV	DATE	BY	CHK	APP	DESCRIPTION
AA	00				SEE SHEET 1



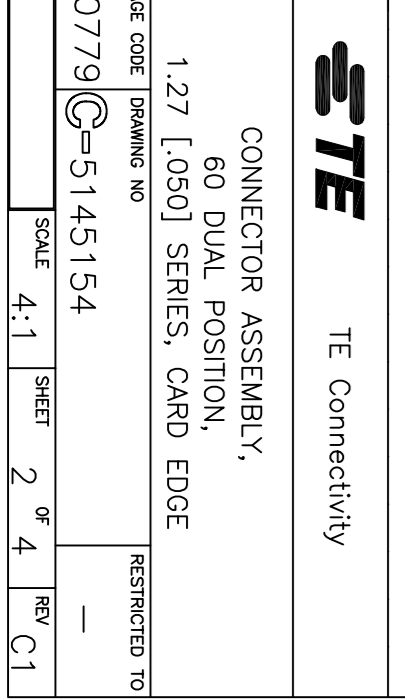
RECOMMENDED MATING BOARD EDGE CONFIGURATION

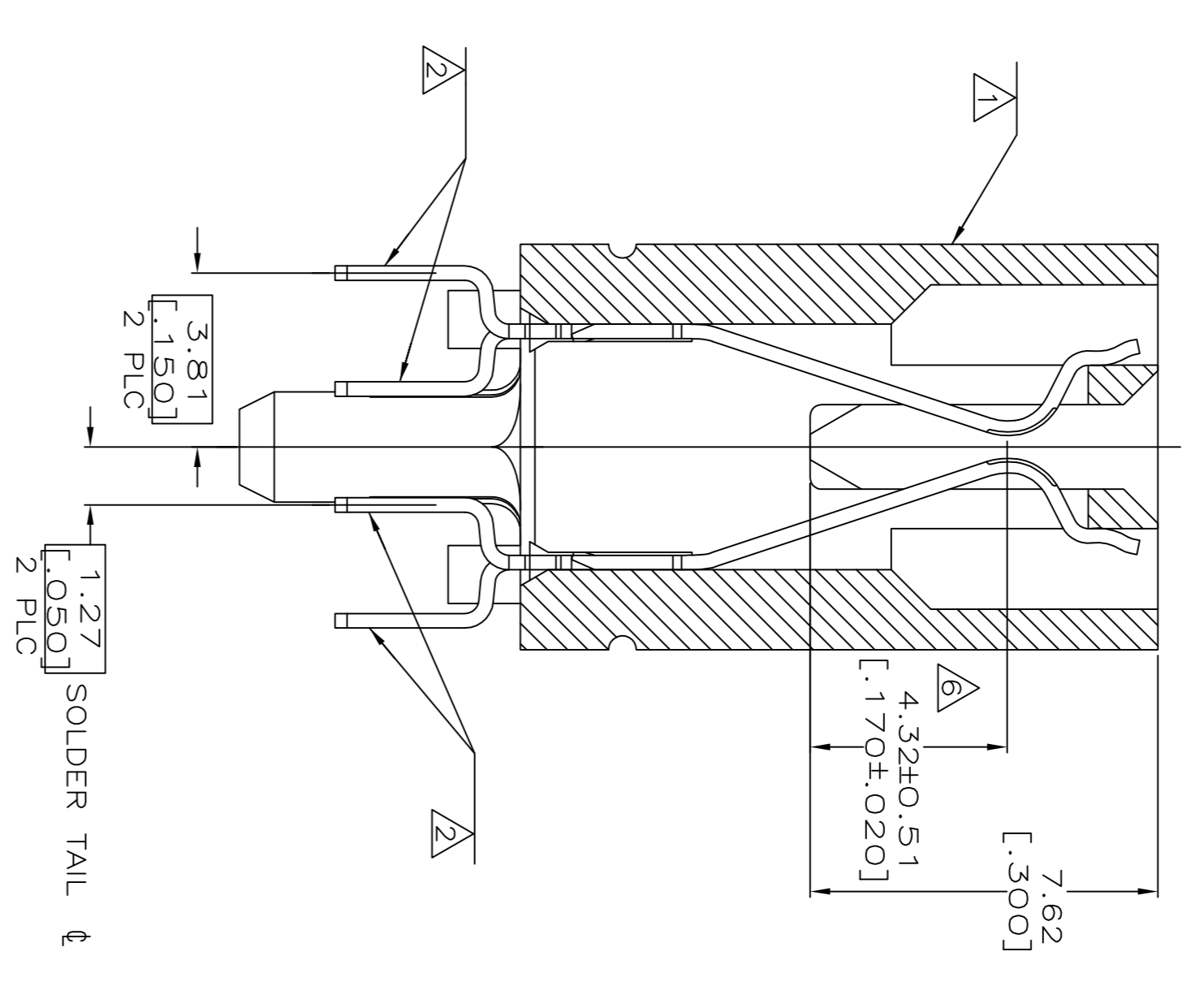
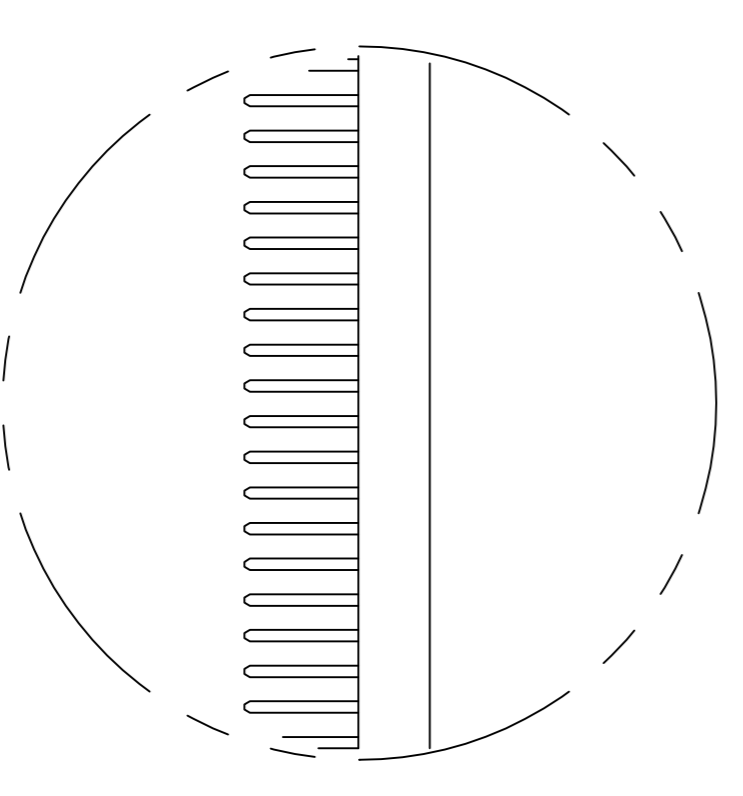
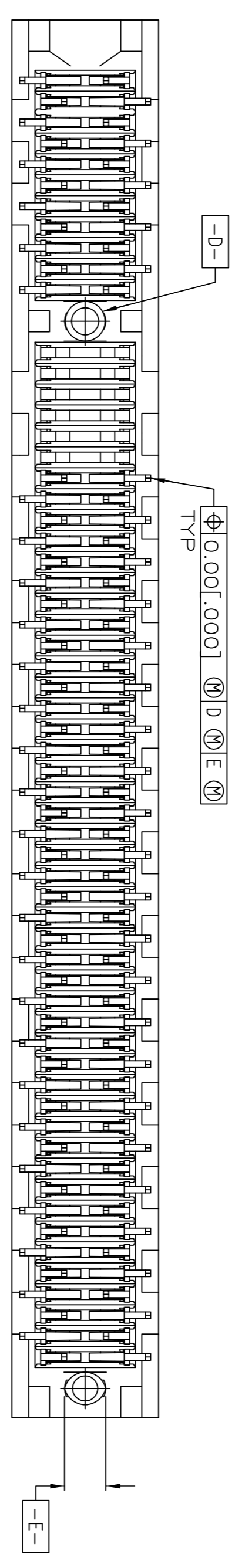
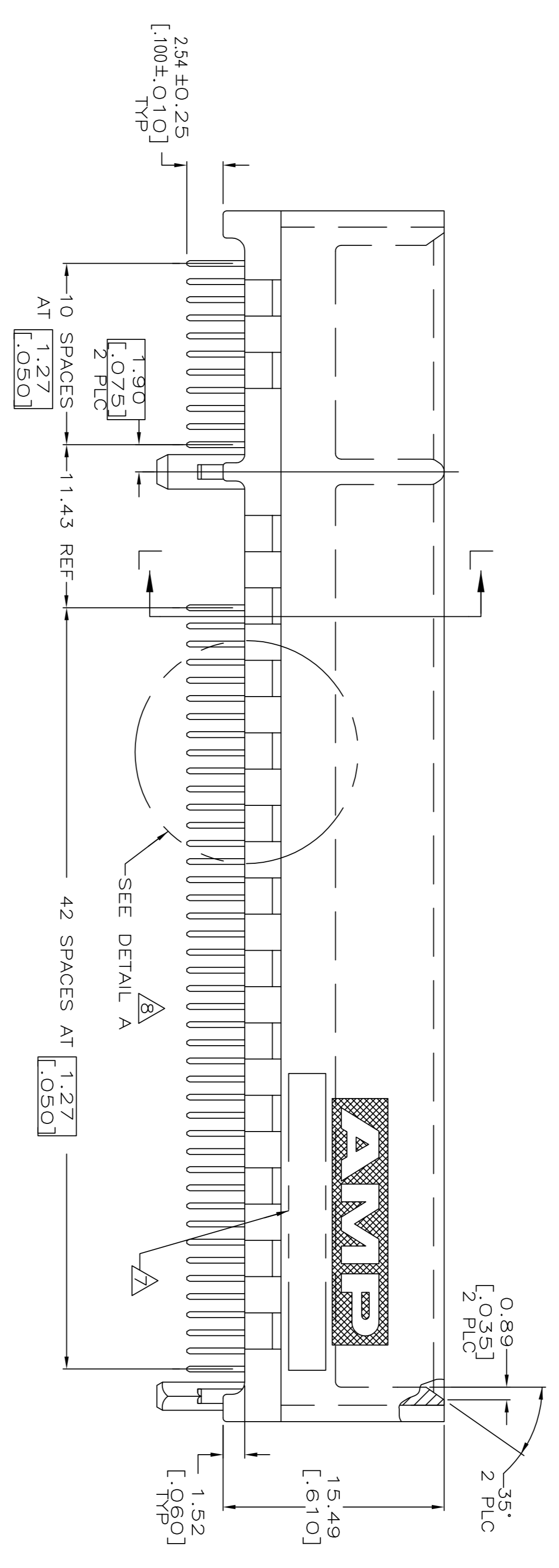
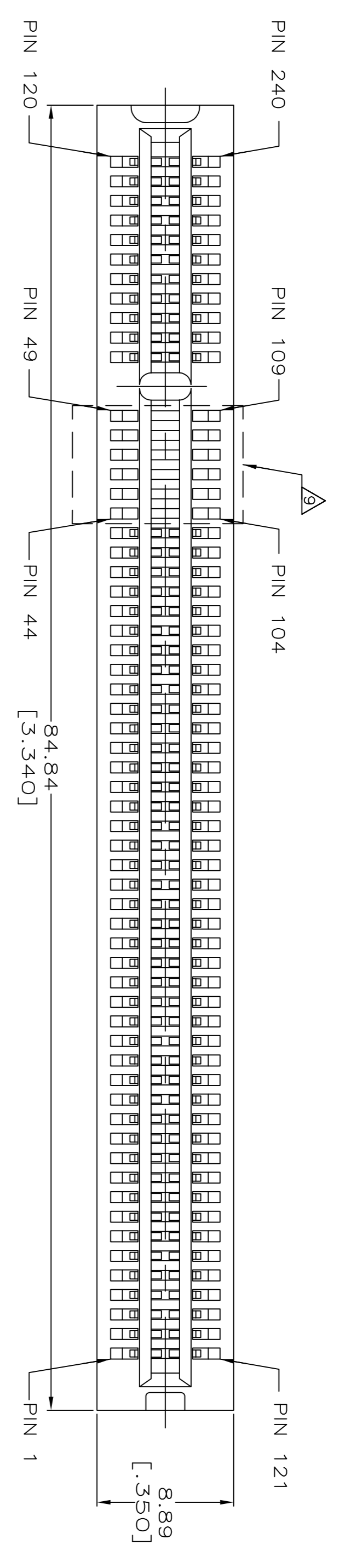


RECOMMENDED CONNECTOR MOUNTING HOLE PATTERN  
(CONNECTOR SIDE SHOWN)

THIS DRAWING IS A CONTROLLED DOCUMENT.		REV	DATE	BY	CHK	APP
DRAWING NO. 114-26012		AA	00			
DESCRIPTION: CONNECTOR ASSEMBLY, 60 DUAL POSITION, 1.27 [0.050] SERIES, CARD EDGE		CUSTOMER DRAWING				
MATERIAL: 114-26012		SCALE: 4:1				
WEIGHT: 114-26012		SHEET: 2 OF 4				
SIZE: A1		REV: C1				

DIMENSIONS		UNIT	
mm (INCHES)		mm (INCHES)	
TOLERANCES UNLESS OTHERWISE SPECIFIED		TOLERANCES UNLESS OTHERWISE SPECIFIED	
0 PLG	± 0.25 (0.01)	0 PLG	± 0.25 (0.01)
1 PLG	± 0.25 (0.01)	1 PLG	± 0.25 (0.01)
2 PLG	± 0.25 (0.01)	2 PLG	± 0.25 (0.01)
4 PLG	± 0.25 (0.01)	4 PLG	± 0.25 (0.01)
ANGLES		ANGLES	
-		-	





SECTION L-L  
SCALE 8:1

SEE SHEET 4 FOR HOLE PATTERN

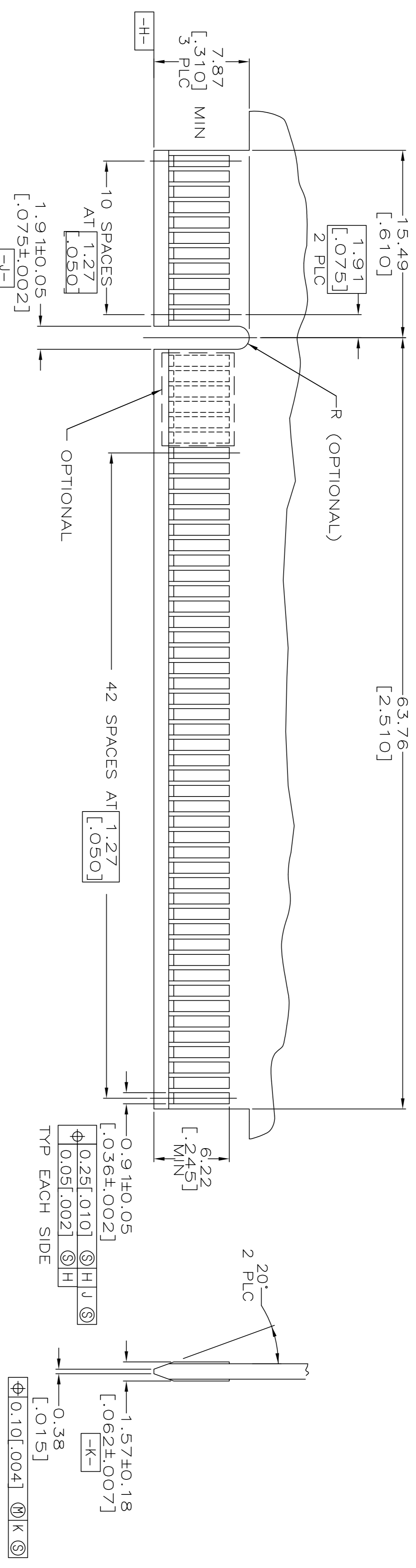
SELECT LOADED TYPE AS SHOWN.

THIS DRAWING IS A CONTROLLED DOCUMENT.		REV	DATE	BY	DESCRIPTION
DIMENSIONS mm (INCHES)		01	20 MAR 04	AVO	FRONT VIEW
OTHER DIMENSIONS		02	20 MAR 04	AVO	FRONT VIEW
FINISH		03	20 MAR 04	AVO	FRONT VIEW
MATERIAL		04	20 MAR 04	AVO	FRONT VIEW
CONNECTOR ASSEMBLY, 60 DUAL POSITION, 1.27 [.050] SERIES, CARD EDGE		05	20 MAR 04	AVO	FRONT VIEW
CUSTOMER DRAWING		06	20 MAR 04	AVO	FRONT VIEW
SCALE 4:1		07	20 MAR 04	AVO	FRONT VIEW
SHEET 3 OF 4		08	20 MAR 04	AVO	FRONT VIEW
REV D		09	20 MAR 04	AVO	FRONT VIEW

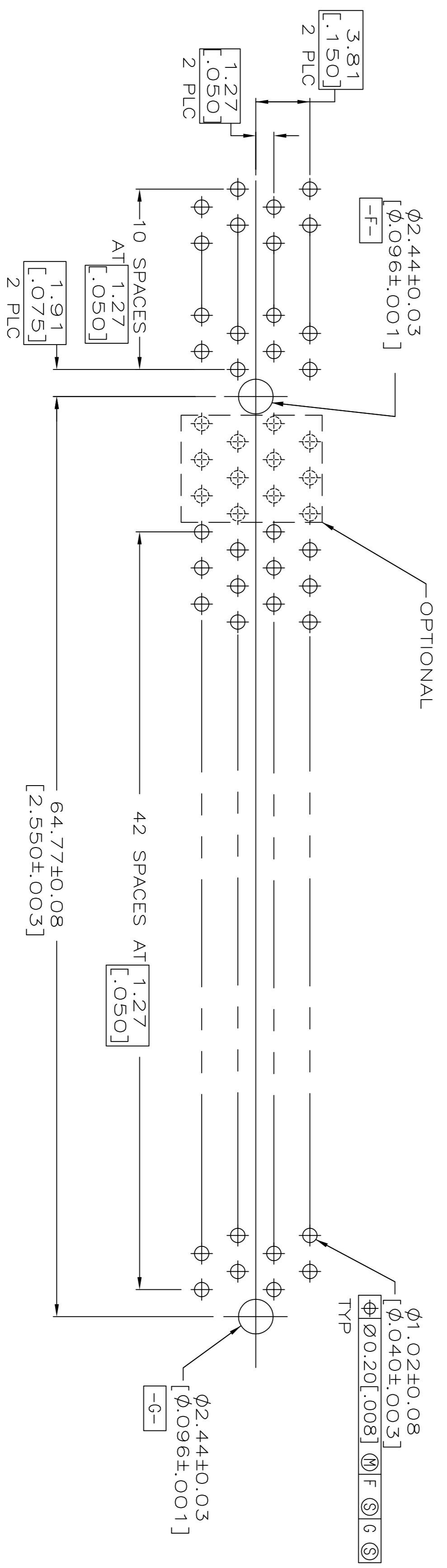
△/A	2-5145154-1
FINISH	PART NUMBER

STE TE Connectivity

REV	DATE	BY	APP'D	DESCRIPTION
AA	00			SEE SHEET 1



RECOMMENDED MATING BOARD EDGE CONFIGURATION  
(SELECT LOADED TYPE)



RECOMMENDED CONNECTOR MOUNTING HOLE PATTERN  
(CONNECTOR SIDE SHOWN)  
(SELECT LOADED TYPE)

DIMENSIONS		TOLERANCES		FINISHES		MATERIAL	
mm (INCHES)	mm (INCHES)	mm (INCHES)	mm (INCHES)	mm (INCHES)	mm (INCHES)	mm (INCHES)	mm (INCHES)
0 PLC	±	0	±	0	±	0	±
1 PLC	±	0	±	0	±	0	±
2 PLC	±	0	±	0	±	0	±
4 PLC	±	0	±	0	±	0	±

THIS DRAWING IS A CONTROLLED DOCUMENT. CUSTOMER DRAWING

DATE: 20 MAR 04

REV: 04

DESCRIPTION: CONNECTOR ASSEMBLY, 60 DUAL POSITION, 1.27 [0.050] SERIES, CARD EDGE

SCALE: 4:1

SHEET: 4 OF 4