



Chipsmall Limited consists of a professional team with an average of over 10 year of expertise in the distribution of electronic components. Based in Hongkong, we have already established firm and mutual-benefit business relationships with customers from,Europe,America and south Asia,supplying obsolete and hard-to-find components to meet their specific needs.

With the principle of "Quality Parts,Customers Priority,Honest Operation,and Considerate Service",our business mainly focus on the distribution of electronic components. Line cards we deal with include Microchip,ALPS,ROHM,Xilinx,Pulse,ON,Everlight and Freescale. Main products comprise IC,Modules,Potentiometer,IC Socket,Relay,Connector.Our parts cover such applications as commercial,industrial, and automotives areas.

We are looking forward to setting up business relationship with you and hope to provide you with the best service and solution. Let us make a better world for our industry!



Contact us

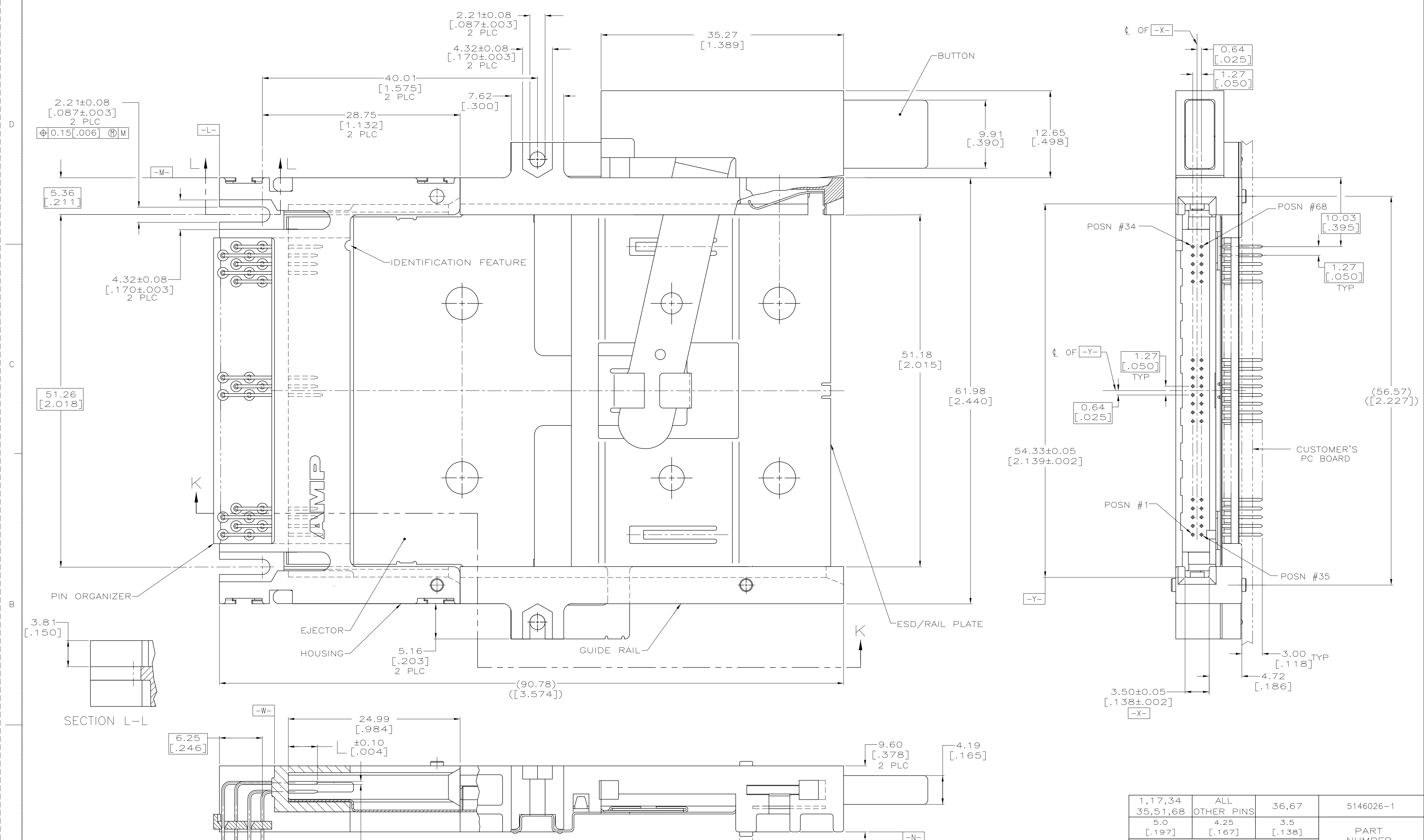
Tel: +86-755-8981 8866 Fax: +86-755-8427 6832

Email & Skype: info@chipsmall.com Web: www.chipsmall.com

Address: A1208, Overseas Decoration Building, #122 Zhenhua RD., Futian, Shenzhen, China



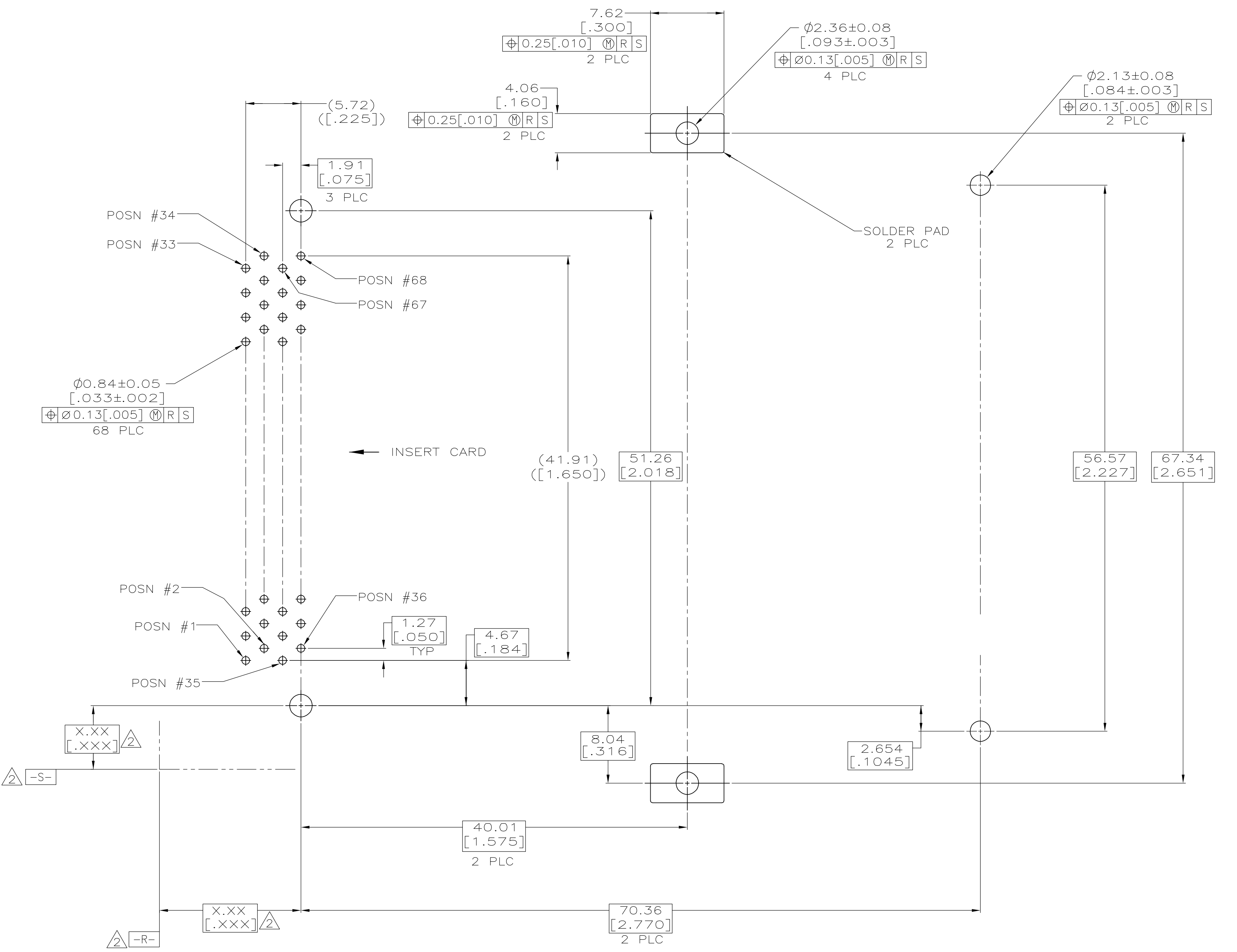
LOC		DIST		REVISIONS			
GP	00	P	LTR	DESCRIPTION	DATE	DWN	APPO
		O		REL PER EC OS13-0031-05	03-24-05	AF	JG



1,17,34	ALL	36,67	5146026-1
35,51,68	OTHER PINS		
5.0	4.25	3.5	PART NUMBER
[.197]	[.167]	[.138]	

"L" (PIN LENGTH) AND LOCATION		DWN 03-24-05 A FERNANDEZ-DOCKS		Tyco Electronics Corporation Harrisburg, PA 17105-3608	
DIMS: mm [INCHES]		D.L. GORENC 03-24-05		M. WALMSLEY 03-24-05	
TOLERANCES UNLESS OTHERWISE SPECIFIED:		NAME		PRODUCT SPEC	
0 PLC	±	APPLICATION SPEC		SIZE CASE CODE DRAWING NO	
1 PLC	±	WEIGHT		RESTRICTED TO	
2 PLC	± 0.13 [005]	26.6 GRAMS		A1 00779	
3 PLC	±	CUSTOMER DRAWING		SCALE 4:1 SHEET 1 OF 2 REV 0	
4 PLC	±				
ANGLES	±				
MATERIAL	FINISH				
4	1				

**COPYRIGHT 2005
 TYCO ELECTRONICS CORP
 ALL RIGHTS RESERVED**



- △ PIN:
0.00076[.000030] MINIMUM GOLD IN CONTACT AREA,
0.00381[.000150] MIN TIN ON SOLDER TAILS,
ALL OVER 0.00127[.000050] MINIMUM NICKEL
- △ DATUMS AND BASIC DIMENSIONS ESTABLISHED BY CUSTOMER
- 3 CONNECTOR REQUIRES USE OF 4 - SIZE 2M SCREWS FOR FASTENING TO PRINTED CIRCUIT BOARD
- △ MATERIAL:
HOUSING, GUIDES, SHROUD, BUTTON & ORGANIZER:
LCP, COLOR; BLACK
PINS: BRASS
EJECTOR, RAIL PLATE & LEVER: STAINLESS STEEL

RECOMMENDED BOARD LAYOUT

**COPYRIGHT 2005
 TYCO ELECTRONICS CORP
 ALL RIGHTS RESERVED**

THIS DRAWING IS A CONTROLLED DOCUMENT.		DWN A. FERNANDEZ-DOCK5 03-24-05	CHK D.L. GORENC 03-24-05	APVD M. WALMSLEY 03-24-05	NAME Tyco Electronics Corporation Harrisburg, PA 17105-3608
DIMENSIONS: mm [INCHES]	TOLERANCES UNLESS OTHERWISE SPECIFIED:	PRODUCT SPEC		CONNECTOR ASSY, PIN HEADER WITH RH EJECTOR, 68 POSN, TOP BOARD MTG, THRU-HOLE, RAISED HEIGHT, AMP MEMORY CARD	
	0 PLC ± -	APPLICATION SPEC		SIZE A1	CAGE CODE 00779
	1 PLC ± -	MATERIAL		DRAWING NO C=5146026	RESTRICTED TO
	2 PLC ± 0.13 [005]	FINISH		WEIGHT	
	3 PLC ± -	CUSTOMER DRAWING		SCALE 4:1	SHEET 2 OF 2
	4 PLC ± -			REV 0	
	ANGLES ± -				