



Chipsmall Limited consists of a professional team with an average of over 10 year of expertise in the distribution of electronic components. Based in Hongkong, we have already established firm and mutual-benefit business relationships with customers from,Europe,America and south Asia,supplying obsolete and hard-to-find components to meet their specific needs.

With the principle of “Quality Parts,Customers Priority,Honest Operation,and Considerate Service”,our business mainly focus on the distribution of electronic components. Line cards we deal with include Microchip,ALPS,ROHM,Xilinx,Pulse,ON,Everlight and Freescale. Main products comprise IC,Modules,Potentiometer,IC Socket,Relay,Connector.Our parts cover such applications as commercial,industrial, and automotives areas.

We are looking forward to setting up business relationship with you and hope to provide you with the best service and solution. Let us make a better world for our industry!



Contact us

Tel: +86-755-8981 8866 Fax: +86-755-8427 6832

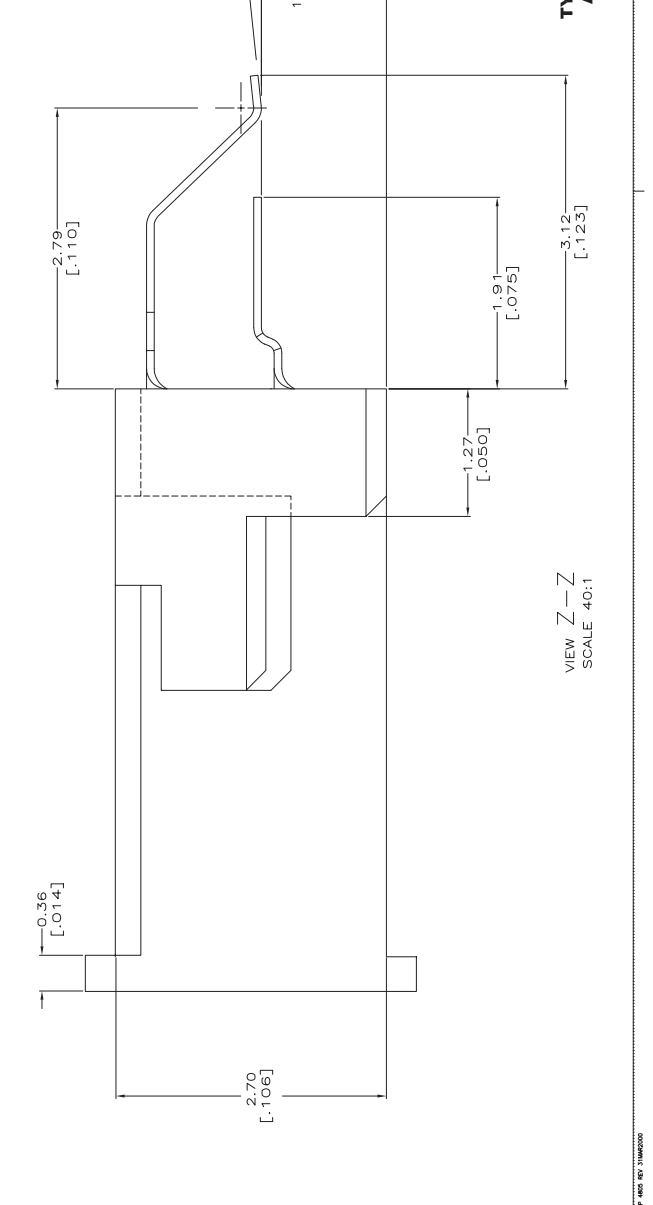
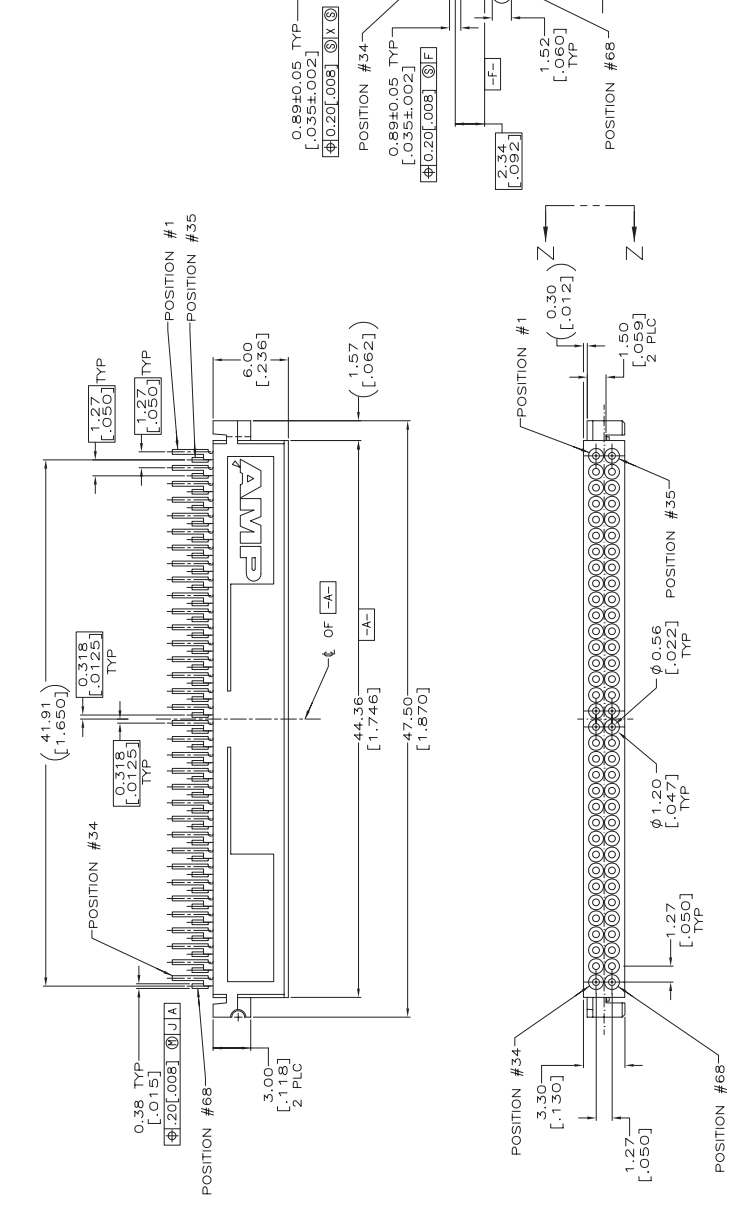
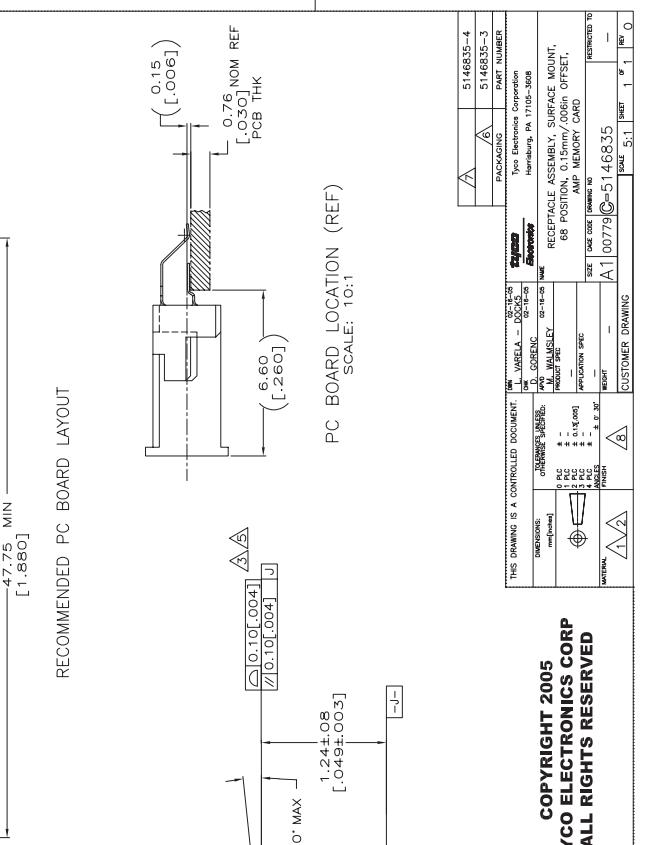
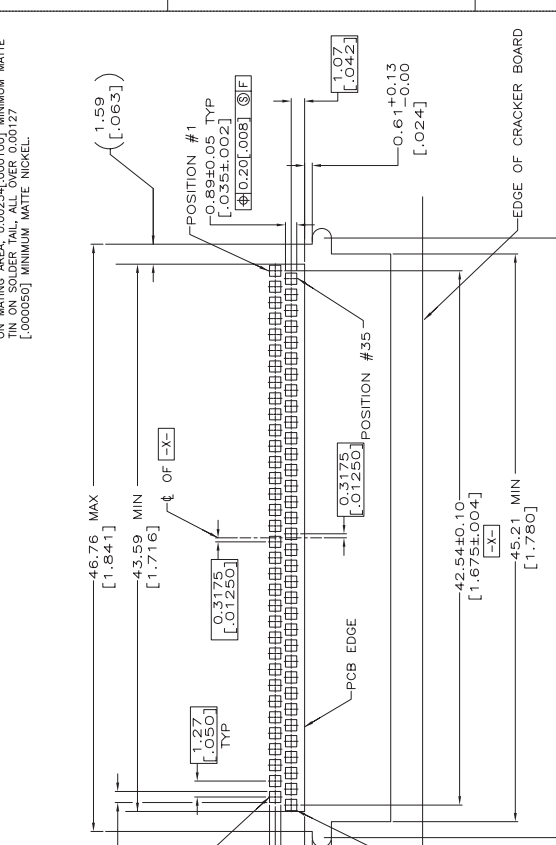
Email & Skype: info@chipsmall.com Web: www.chipsmall.com

Address: A1208, Overseas Decoration Building, #122 Zhenhua RD., Futian, Shenzhen, China



REVISIONS	
NO.	DESCRIPTION
1	RELEASED PER EC 0513-0006-05
2	
3	
4	
5	
6	
7	
8	

△ HOUSING: LCP, GLASS FILLED, COLOR: BLACK.
 △ CONTACTS: BERILLIUM COPPER.
 △ DIMENSION IN REFERENCE TO LOWEST POINT OF EACH LEAD.
 4. POINT OF CONTACT 2.3[.091] REF FROM MATING FACE.
 △ APPLIES TO ALL SOLDER TAILS.
 △ PACKAGED IN 56mm WIDE TAPE AND PLASTIC REEL.
 △ CONTACTS: 0.00076[.000030] MINIMUM GOLD ON MATING AREA, 0.00254[.000100] MINIMUM MATTE TIN ON SOLDER TAIL, ALL OVER 0.00127 [0.00050] MINIMUM MATTE NICKEL.



THIS DRAWING IS A CONTROLLED DOCUMENT	
REV	DESCRIPTION
1	RELEASED PER EC 0513-0006-05
2	
3	
4	
5	
6	
7	
8	

DESIGNER	W. VASELA	DATE	05-12-05
CHECKED	D. GOREN	DATE	05-12-05
APP. IN CHARGE	M. WALMSLEY	DATE	05-12-05
APPROVED		DATE	

COMPANY	TYCO ELECTRONICS CORPORATION
ADDRESS	1000 MARKET STREET, PHILADELPHIA, PA 19106-3608
PHONE	215-981-1000
FAX	215-981-1001
EMAIL	SALES@TYCOELECTRONICS.COM
WEBSITE	WWW.TYCOELECTRONICS.COM
PART NUMBER	5146835-3
REV. NUMBER	1
REV. DATE	05-12-05
REV. BY	WV
REV. CHECKED	DG
REV. APPROVED	

DESCRIPTION	RECEPTACLE ASSEMBLY, SURFACE MOUNT, 68 POSITION, 0.15mm/0.06in OFFSET, MEMORY CARD
QUANTITY	1
DATE	05-12-05
BY	WV
CHECKED	DG
APPROVED	

THIS DRAWING IS A CONTROLLED DOCUMENT	5146835-4
TYCO ELECTRONICS CORPORATION	1
1000 MARKET STREET, PHILADELPHIA, PA 19106-3608	05-12-05
215-981-1000	
215-981-1001	
SALES@TYCOELECTRONICS.COM	
WWW.TYCOELECTRONICS.COM	
5146835-3	
1	
05-12-05	
WV	
DG	