



Chipsmall Limited consists of a professional team with an average of over 10 year of expertise in the distribution of electronic components. Based in Hongkong, we have already established firm and mutual-benefit business relationships with customers from,Europe,America and south Asia,supplying obsolete and hard-to-find components to meet their specific needs.

With the principle of “Quality Parts,Customers Priority,Honest Operation,and Considerate Service”,our business mainly focus on the distribution of electronic components. Line cards we deal with include Microchip,ALPS,ROHM,Xilinx,Pulse,ON,Everlight and Freescale. Main products comprise IC,Modules,Potentiometer,IC Socket,Relay,Connector.Our parts cover such applications as commercial,industrial, and automotives areas.

We are looking forward to setting up business relationship with you and hope to provide you with the best service and solution. Let us make a better world for our industry!



Contact us

Tel: +86-755-8981 8866 Fax: +86-755-8427 6832

Email & Skype: info@chipsmall.com Web: www.chipsmall.com

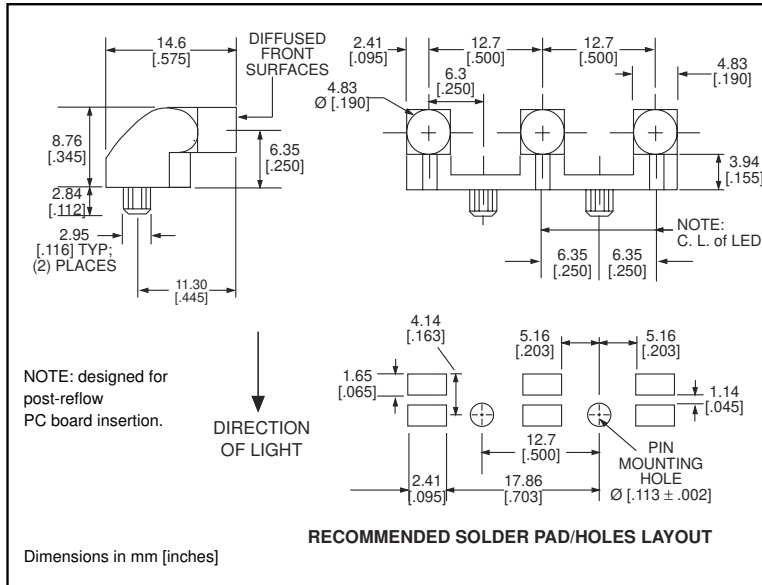
Address: A1208, Overseas Decoration Building, #122 Zhenhua RD., Futian, Shenzhen, China



5mm Round microLED[®] Optopipe[™] Optical Light Pipe, 3 Array

Dialight

515-1010



Recommended MicroLED SMT LEDs for use with 515-1010

PART NO.	COLOR	PAGE #
597-3001-2xx	Red	1-21
597-3111-5xx	AlGaAs Red	1-30
597-3121-2xx	AlGaAs Red	1-21
597-3211-2xx	Orange	1-21
597-3211-5xx	Orange	1-30
597-3301-2xx	Green	1-21
597-3301-5xx	Green	1-30
597-3401-2xx	Yellow	1-21
597-3401-5xx	Yellow	1-30
597-7701-2xx	Red/Green	1-23
597-7701-5xx	Red/Green	1-31
597-7721-2xx	Yellow/Green	1-23
597-7721-5xx	Yellow/Green	1-31
597-7731-2xx	Red/Yellow	1-24

Features

- High transmissivity polycarbonate material
- UL94V-0 compliance
- ESD protection (circuit isolation from front panel)
- Wide viewing angle
- Arrays reduce insertion costs
- Designed to replace 5mm right angle through-hole device
- Compatible with Dialight's 515-1011 single position Optopipe Light Pipe
- Secures to PCB by press-fit

LED Data

For absolute maximum ratings and other electrical and optical data on the recommended LEDs, refer to LED data sheets.

Operating/Storage Temperature

-30°C to +100°C

Dialight Optopipe Light Pipe Description

This light pipe's larger light emitting surfaces appear bright and are optically well isolated. It is reliably held in place by 2 press-fit pins located between the light pipe elements. This Optopipe[™] functions as a through-the-case indicator with a textured finish on the 3 light emitting surfaces that increases its viewing angle. The recommended light sources are Dialight's 597 Series PLCC-2 or PLCC-4 Type SMT LEDs. The LEDs are mounted in a straight line on a 0.500" pitch. The light pipe material is water clear transmissive polycarbonate rated UL94-V0, and has a 35% oxygen index.

Dialight can provide custom Optopipe[™] solutions for your applications.