



Chipsmall Limited consists of a professional team with an average of over 10 year of expertise in the distribution of electronic components. Based in Hongkong, we have already established firm and mutual-benefit business relationships with customers from,Europe,America and south Asia,supplying obsolete and hard-to-find components to meet their specific needs.

With the principle of “Quality Parts,Customers Priority,Honest Operation,and Considerate Service”,our business mainly focus on the distribution of electronic components. Line cards we deal with include Microchip,ALPS,ROHM,Xilinx,Pulse,ON,Everlight and Freescale. Main products comprise IC,Modules,Potentiometer,IC Socket,Relay,Connector.Our parts cover such applications as commercial,industrial, and automotives areas.

We are looking forward to setting up business relationship with you and hope to provide you with the best service and solution. Let us make a better world for our industry!



## Contact us

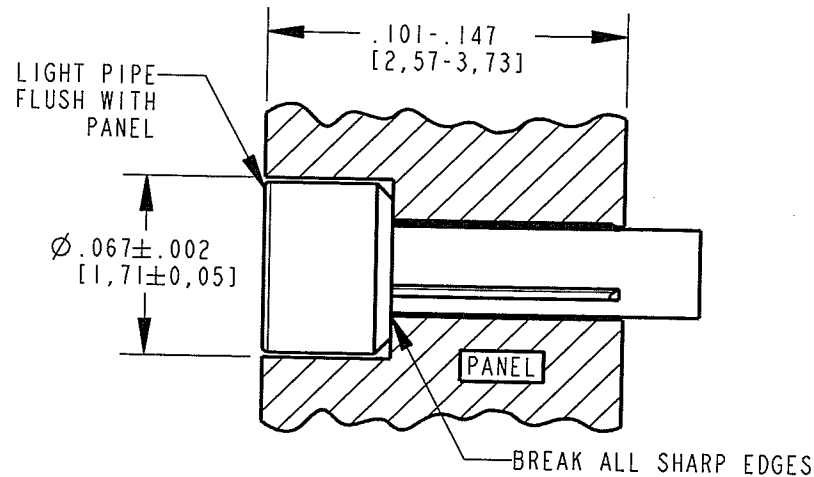
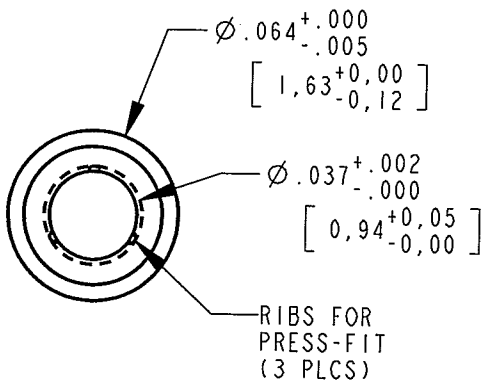
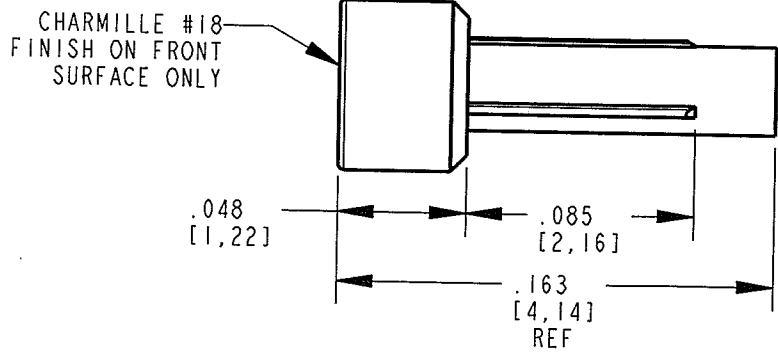
Tel: +86-755-8981 8866 Fax: +86-755-8427 6832

Email & Skype: [info@chipsmall.com](mailto:info@chipsmall.com) Web: [www.chipsmall.com](http://www.chipsmall.com)

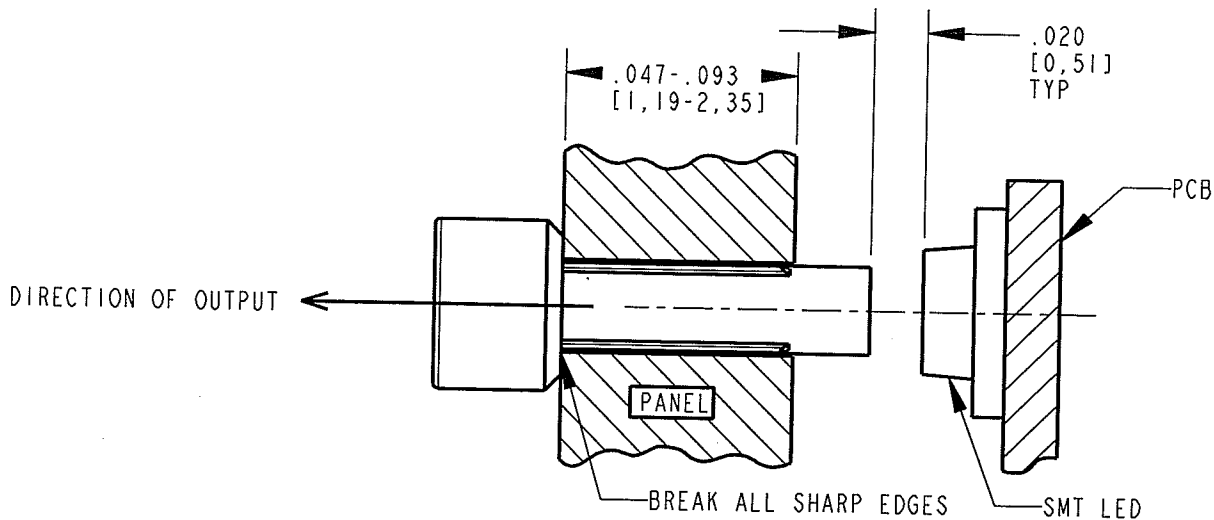
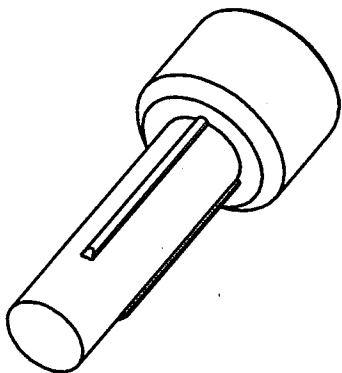
Address: A1208, Overseas Decoration Building, #122 Zhenhua RD., Futian, Shenzhen, China



REV	ECN NO	REVISIONS	DRN	CKD	APP	DATE
A		NEW RELEASE	KLJ	7.8.	10-17-08	



RECOMMENDED PANEL DIMENSIONS  
FOR FLUSH MOUNT INSTALLATION



RECOMMENDED PANEL DIMENSIONS  
FOR PROTRUDED INSTALLATION  
&  
RECOMMENDED LED PLACEMENT

**RoHS COMPLIANT 515-1016F**  
Part Numbers with the "F" suffix ending are RoHS Compliant.  
Packaging is marked with "RoHS Compliant" label or equivalent markings.

- NOTES:
- COMPONENTS MOLDED IN A CLEAR TRANSMISSIVE POLYCARBONATE (UL 94V-0 FLAMMABILITY CLASS).
  - COMPONENTS DESIGNED TO BE PRESSED INTO FRONT PANEL.
  - RECOMMENDED LIGHT SOURCES: SMT LED (0603, 0805, AND 1206 PACKAGE SIZES)
  - MOUNTING HOLE SIZE: Ø.035±.002 (#65 DRILL)
  - DIALIGHT PART NUMBER: 515-1016F

THIS DRAWING AND THE CONTENTS HEREIN ARE CONFIDENTIAL AND THE SOLE PROPERTY OF DIALIGHT. REPRODUCTION OF THIS DRAWING OR CONSTRUCTION OF ANY PARTS WITHIN THIS DRAWING ARE FORBIDDEN WITHOUT THE WRITTEN CONSENT OF DIALIGHT.		
SCALE: 14.000	DRAWING NUMBER	REV
ALL DIM'S IN: INCHES (MM)	C-17664	A
TOLERANCES: UNLESS OTHERWISE SPECIFIED	TITLE Ø.064 STRAIGHT LIGHT PIPE W/ PRESS-FIT; RoHS COMPLIANT	
FRACTIONS: ±1/64	MATERIAL	
DECIMALS (.XX): ±.01	<div> <div>Dialight</div> <div>1501 ROUTE 34 SOUTH FARMINGDALE, NJ 07727</div> </div>	
DECIMALS (.XXX): ±.005		
DECIMALS (.XXXX): ±.0005	SHEET 1 OF 1 FAMILY TABLE:	
ANGLES: ±1°		
FINISH:		
FSCM 83330		