



Chipsmall Limited consists of a professional team with an average of over 10 year of expertise in the distribution of electronic components. Based in Hongkong, we have already established firm and mutual-benefit business relationships with customers from,Europe,America and south Asia,supplying obsolete and hard-to-find components to meet their specific needs.

With the principle of "Quality Parts,Customers Priority,Honest Operation,and Considerate Service",our business mainly focus on the distribution of electronic components. Line cards we deal with include Microchip,ALPS,ROHM,Xilinx,Pulse,ON,Everlight and Freescale. Main products comprise IC,Modules,Potentiometer,IC Socket,Relay,Connector.Our parts cover such applications as commercial,industrial, and automotives areas.

We are looking forward to setting up business relationship with you and hope to provide you with the best service and solution. Let us make a better world for our industry!



Contact us

Tel: +86-755-8981 8866 Fax: +86-755-8427 6832

Email & Skype: info@chipsmall.com Web: www.chipsmall.com

Address: A1208, Overseas Decoration Building, #122 Zhenhua RD., Futian, Shenzhen, China



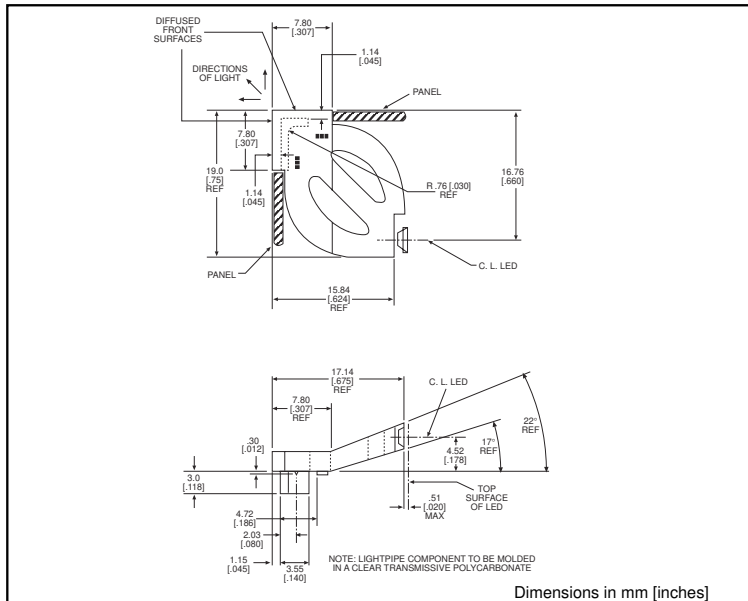


microLED[®] Optopipe[™]

Optical Light Pipe, Illuminated Corner

Dialight

515-1036



MicroLED SMT LEDs for use with 515-1036

<u>PART NO.</u>	<u>PAGE #</u>
Recommended	
597-3xx1-2xx	1-21
597-77x1-2xx	1-23 & 1-24

Alternatives	
597-3xxx-4xx	1-27 & 1-28
597-3xx1-4xx	1-28
597-3xx1-5xx	1-30
597-5004-4xx	1-26
597-5x11-4xx	1-27
597-5x12-4xx	1-26
597-5202-4xx	1-27
597-52x3-4xx	1-26
597-77x1-5xx	1-31

LED alternatives may not produce optimum light output

Features

- High transmissivity polycarbonate material
- UL94V-0 compliance
- ESD protection (circuit isolation from front panel)
- Even illumination of both panel faces
- Secures to panel by ultrasonic welding

LED Data

For absolute maximum ratings and other electrical and optical data on the recommended LEDs, refer to LED data sheets.

Operating/Storage Temperature

-30°C to +100°C

Dialight Optopipe Light Pipe Description

This Optopipe[™] is ultrasonically welded inside the customer's plastic housing. The light pipe is welded to case at the L-shaped tab at the front of the part. The light pipe is not attached to the PCB at any point but floats above it. The squared-off end sticks through the plastic panel. The surface is textured to diffuse the light passing through it. The multi-guided design insures even illumination of the two indicating surfaces. The light pipe material is water clear transmissive polycarbonate rated UL94-V0, and has a 35% oxygen index.

Dialight can provide custom Optopipe[™] solutions for your applications.