



Chipsmall Limited consists of a professional team with an average of over 10 year of expertise in the distribution of electronic components. Based in Hongkong, we have already established firm and mutual-benefit business relationships with customers from,Europe,America and south Asia,supplying obsolete and hard-to-find components to meet their specific needs.

With the principle of “Quality Parts,Customers Priority,Honest Operation,and Considerate Service”,our business mainly focus on the distribution of electronic components. Line cards we deal with include Microchip,ALPS,ROHM,Xilinx,Pulse,ON,Everlight and Freescale. Main products comprise IC,Modules,Potentiometer,IC Socket,Relay,Connector.Our parts cover such applications as commercial,industrial, and automotives areas.

We are looking forward to setting up business relationship with you and hope to provide you with the best service and solution. Let us make a better world for our industry!



Contact us

Tel: +86-755-8981 8866 Fax: +86-755-8427 6832

Email & Skype: info@chipsmall.com Web: www.chipsmall.com

Address: A1208, Overseas Decoration Building, #122 Zhenhua RD., Futian, Shenzhen, China

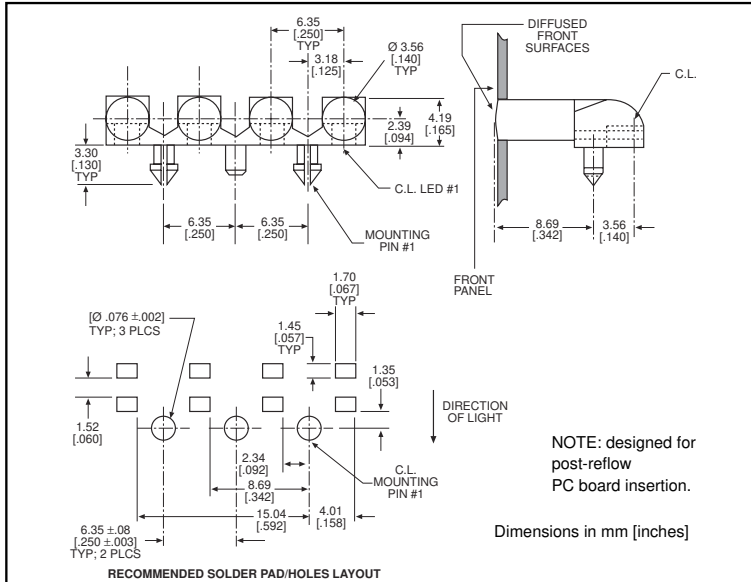




3.56mm Round *microLED*® *Optopipe*™ Optical Light Pipe, 4 Array



515-1048



MicroLED SMT LEDs for use with 515-1048

PART NO.	PAGE #
Recommended	
597-3xx1-4xx	1-27 & 1-28
Alternatives	
597-5x11-4xx	1-27
597-5202-4xx	1-27

LED alternatives may not produce optimum light output
Solder Pad/Holes layout shown is for single color LEDs listed under "Recommended" category
Contact factory for other layouts

2

Features

- Snap Pin retention version of Dialight's 515-1020 4 Array Light Pipe
- High transmissivity polycarbonate material
- UL94V-0 compliance
- ESD protection (circuit isolation from front panel)
- Wide viewing angle
- Arrays reduce insertion costs
- Secures to PCB by snap-fit

LED Data

For absolute maximum ratings and other electrical and optical data on the recommended LEDs, refer to LED data sheets.

Operating/Storage Temperature

-30°C to +100°C

Dialight *Optopipe* Light Pipe Description

This *Optopipe*'s™ circular light emitting surfaces appear bright and uniform in intensity. It is securely held in place by 2 snap-fit pins and 1 locating pin located between the 4 light pipe elements. This *Optopipe*™ functions as a through-the-case indicator with a textured finish on the 4 light emitting surface that increases its viewing angle. The recommended light sources are Dialight's 597 Series 1206 Type SMT LEDs. The LEDs are mounted in a straight line on a 0.250" pitch. The light pipe material is water clear transmissive polycarbonate rated UL94-V0, and has a 35% oxygen index.

Dialight can provide custom *Optopipe*™ solutions for your applications.