



Chipsmall Limited consists of a professional team with an average of over 10 year of expertise in the distribution of electronic components. Based in Hongkong, we have already established firm and mutual-benefit business relationships with customers from,Europe,America and south Asia,supplying obsolete and hard-to-find components to meet their specific needs.

With the principle of “Quality Parts,Customers Priority,Honest Operation,and Considerate Service”,our business mainly focus on the distribution of electronic components. Line cards we deal with include Microchip,ALPS,ROHM,Xilinx,Pulse,ON,Everlight and Freescale. Main products comprise IC,Modules,Potentiometer,IC Socket,Relay,Connector.Our parts cover such applications as commercial,industrial, and automotives areas.

We are looking forward to setting up business relationship with you and hope to provide you with the best service and solution. Let us make a better world for our industry!



Contact us

Tel: +86-755-8981 8866 Fax: +86-755-8427 6832

Email & Skype: info@chipsmall.com Web: www.chipsmall.com

Address: A1208, Overseas Decoration Building, #122 Zhenhua RD., Futian, Shenzhen, China

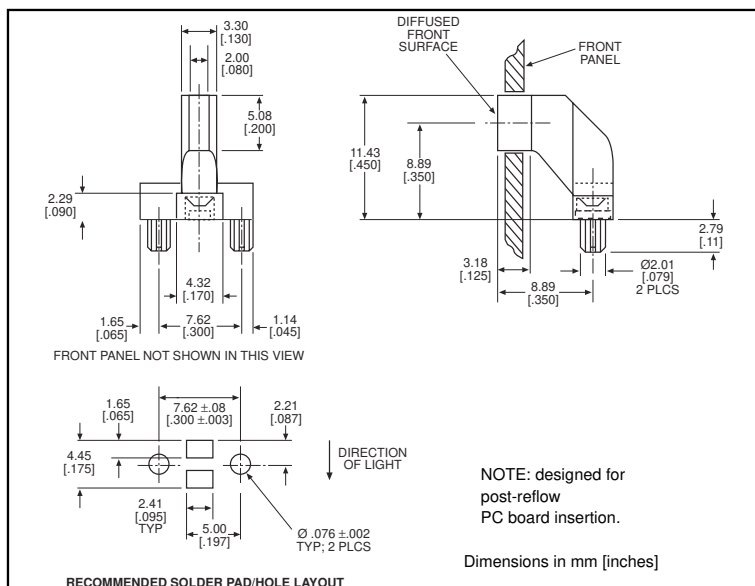




2 x 5mm Rectangular *microLED*® *Optopipe*™ Optical Light Pipe, Single

Dialight

515-1054



MicroLED SMT LEDs for use with 515-1054

PART NO. PAGE

Recommended

597-3xx1-2xx	1-21
597-77x1-2xx	1-23

Alternatives

597-3xx1-5xx	1-30
597-77x1-5xx	1-31

LED alternatives may not produce optimum light output

Solder Pad/Holes layout shown is for single color LEDs listed under "Recommended" category

Contact factory for other layouts

Features

- Compatible with Dialight's 515-1051
- High transmissivity polycarbonate material
- UL94V-0 compliance
- ESD protection (circuit isolation from front panel)
- Wide viewing angle
- Secures to PCB by press-fit

LED Data

For absolute maximum ratings and other electrical and optical data on the recommended LEDs, refer to LED data sheets.

Operating/Storage Temperature

–30°C to +100°C

Dialight *Optopipe* Light Pipe Description

This *Optopipe*™ functions as a through-the-case indicator with the appearance of a single 2 x 5mm rectangular LED. It can utilize either a single or multi-color SMT LED, and can be used to form longer arrays with the 515-1051 light pipe. It is held to the PCB by 2 press-fit pins. The light pipe material is water clear transmissive polycarbonate rated UL94-V0, and has a 35% oxygen index.

Dialight can provide custom *Optopipe*™ solutions for your applications.