



Chipsmall Limited consists of a professional team with an average of over 10 year of expertise in the distribution of electronic components. Based in Hongkong, we have already established firm and mutual-benefit business relationships with customers from,Europe,America and south Asia,supplying obsolete and hard-to-find components to meet their specific needs.

With the principle of "Quality Parts,Customers Priority,Honest Operation,and Considerate Service",our business mainly focus on the distribution of electronic components. Line cards we deal with include Microchip,ALPS,ROHM,Xilinx,Pulse,ON,Everlight and Freescale. Main products comprise IC,Modules,Potentiometer,IC Socket,Relay,Connector.Our parts cover such applications as commercial,industrial, and automotives areas.

We are looking forward to setting up business relationship with you and hope to provide you with the best service and solution. Let us make a better world for our industry!



## Contact us

Tel: +86-755-8981 8866 Fax: +86-755-8427 6832

Email & Skype: info@chipsmall.com Web: www.chipsmall.com

Address: A1208, Overseas Decoration Building, #122 Zhenhua RD., Futian, Shenzhen, China



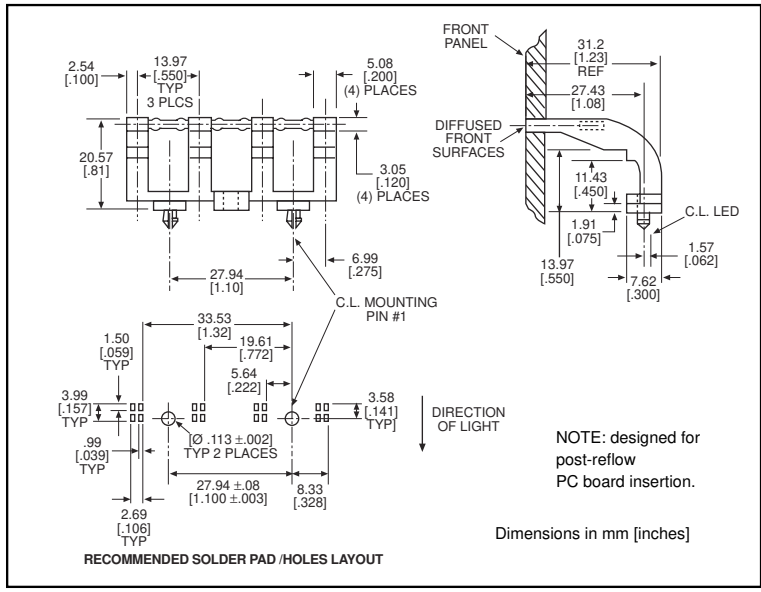


# 3 x 5mm Rectangular *micro*LED® Optopipe™



## Optical Light Pipe, 4 Array (RJ45 Jack)

# 515-1055



## MicroLED SMT LEDs for use with 515-1055

PART NO.	PAGE #
<b>Recommended</b>	
597-3xx1-1xx	1-19
597-77x1-1xx	1-20
<b>Alternatives</b>	
597-3xxx-4xx	1-27 & 1-28
597-3xx1-4xx	1-28
597-3xx1-5xx	1-30
597-5x11-4xx	1-27
597-5202-4xx	1-27

LED alternatives may not produce optimum light output

Solder Pad/Holes layout shown is for bi-color LEDs listed under "Recommended" category

Contact factory for other layouts

2

### Features

- High transmissivity polycarbonate material
- UL94V-0 compliance
- ESD protection (circuit isolation from front panel)
- Wide viewing angle
- Arrays reduce insertion costs
- Secures to PCB by snap-fit

### LED Data

For absolute maximum ratings and other electrical and optical data on the recommended LEDs, refer to LED data sheets.

### Operating/Storage Temperature

-30°C to +100°C

### Dialight Optopipe Light Pipe Description

This Optopipe™ functions as a through-the-case indicator by conducting the light over the top of connectors or switches with a maximum height of 0.550". It is equivalent to the 515-1022 and well suited to applications where vibration is a concern. This Optopipe's™ four 3 x 5mm rectangular light emitting surfaces appear bright and are optically well isolated. The light pipe is reliably held in place by 2 snap-fit pins located next to the first and fourth light pipe elements. These pins positively lock onto 0.062" thick PCBs regardless of individual variations in thickness. A textured finish on the 4 light emitting surfaces maximizes the viewing angle. The recommended light sources are Dialight's 597 Series PLCC-2 or PLCC-4 type SMT LEDs. The LEDs are mounted in a straight line on a 0.550" pitch. The light pipe material is water clear transmissive polycarbonate rated UL94-V0, and has a 35% oxygen index.

Dialight can provide custom Optopipe™ solutions for your applications.