



Chipsmall Limited consists of a professional team with an average of over 10 year of expertise in the distribution of electronic components. Based in Hongkong, we have already established firm and mutual-benefit business relationships with customers from,Europe,America and south Asia,supplying obsolete and hard-to-find components to meet their specific needs.

With the principle of “Quality Parts,Customers Priority,Honest Operation,and Considerate Service”,our business mainly focus on the distribution of electronic components. Line cards we deal with include Microchip,ALPS,ROHM,Xilinx,Pulse,ON,Everlight and Freescale. Main products comprise IC,Modules,Potentiometer,IC Socket,Relay,Connector.Our parts cover such applications as commercial,industrial, and automotives areas.

We are looking forward to setting up business relationship with you and hope to provide you with the best service and solution. Let us make a better world for our industry!



Contact us

Tel: +86-755-8981 8866 Fax: +86-755-8427 6832

Email & Skype: info@chipsmall.com Web: www.chipsmall.com

Address: A1208, Overseas Decoration Building, #122 Zhenhua RD., Futian, Shenzhen, China

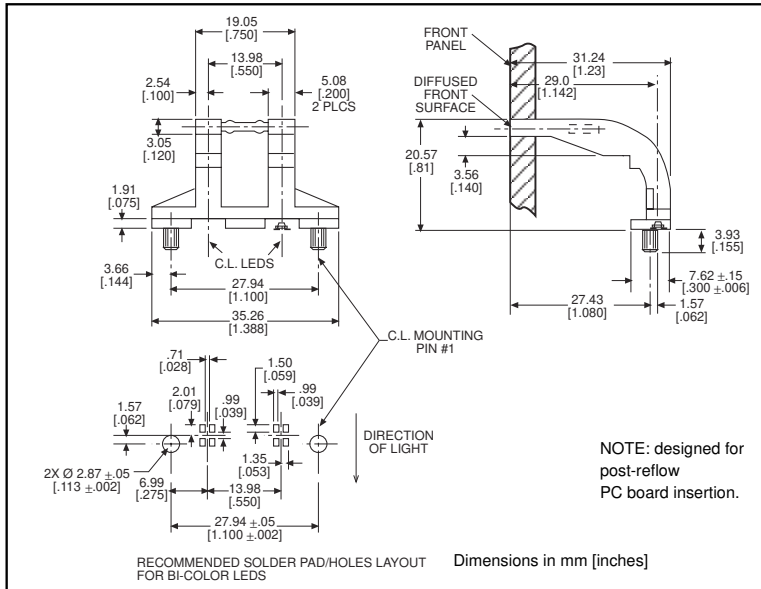


3 x 5mm Rectangular *microLED*® Optopipe™

Optical Light Pipe, 2 Array (RJ45 Jack)

Dialight

515-1070



Recommended MicroLED SMT LEDs for use with 515-1070

2

PART NO.	COLOR	PAGE #
597-3001-1xx	Red	1-19
597-3111-1xx	AlGaAs Red	1-19
597-3111-5xx	AlGaAs Red	1-30
597-3211-1xx	Orange	1-19
597-3211-5xx	Orange	1-30
597-3301-1xx	Green	1-19
597-3301-5xx	Green	1-30
597-3401-1xx	Yellow	1-19
597-3401-5xx	Yellow	1-30
597-7701-1xx	Red/Green	1-20
597-7701-5xx	Red/Green	1-31
597-7721-1xx	Yellow/Green	1-20
597-7721-5xx	Yellow/Green	1-31
597-7731-1xx	Red/Yellow	1-20

Features

- Complements Dialight's 515-1022 Four Array Optopipe Light Pipe
- Allows indicators to be positioned above corresponding RJ45 jack or D-Subminiature
- High transmissivity polycarbonate material
- UL94V-0 compliance
- ESD protection (circuit isolation from front panel)
- Wide viewing angle
- Arrays reduce insertion costs
- Secures to PCB by press-fit

LED Data

For absolute maximum ratings and other electrical and optical data on the recommended LEDs, refer to LED data sheets.

Operating/Storage Temperature

-30°C to +100°C

Dialight Optopipe Light Pipe Description

This light pipe's two 3 x 5mm rectangular light emitting surfaces appear bright and are optically well isolated. The light pipe is reliably held in place by 2 press-fit pins located at either end of the light pipe array. This Optopipe™ functions as a through-the-case indicator by conducting the light over the top of connectors or switches. A textured finish on the 2 light emitting surfaces maximizes the viewing angle. The recommended light sources are Dialight's 597 Series PLCC-2 or PLCC-4 Type SMT LEDs. The LEDs are mounted in a straight line on an 0.550" pitch. The light pipe material is water clear transmissive polycarbonate rated UL94-V0, and has a 35% oxygen index.

Dialight can provide custom Optopipe™ solutions for your applications.