



Chipsmall Limited consists of a professional team with an average of over 10 year of expertise in the distribution of electronic components. Based in Hongkong, we have already established firm and mutual-benefit business relationships with customers from,Europe,America and south Asia,supplying obsolete and hard-to-find components to meet their specific needs.

With the principle of “Quality Parts,Customers Priority,Honest Operation,and Considerate Service”,our business mainly focus on the distribution of electronic components. Line cards we deal with include Microchip,ALPS,ROHM,Xilinx,Pulse,ON,Everlight and Freescale. Main products comprise IC,Modules,Potentiometer,IC Socket,Relay,Connector.Our parts cover such applications as commercial,industrial, and automotives areas.

We are looking forward to setting up business relationship with you and hope to provide you with the best service and solution. Let us make a better world for our industry!



Contact us

Tel: +86-755-8981 8866 Fax: +86-755-8427 6832

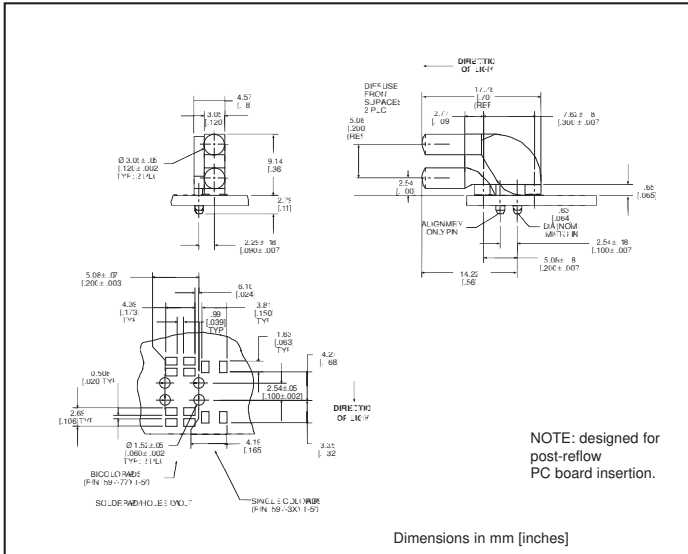
Email & Skype: info@chipsmall.com Web: www.chipsmall.com

Address: A1208, Overseas Decoration Building, #122 Zhenhua RD., Futian, Shenzhen, China



3mm Round *microLED*[®] Optopipe[®] Optical Light Pipe, Bi-Level

Dialight
.....
515-1094



Recommended MicroLED SMT LEDs for use with 515-1094

PART NO.	COLOR	PAGE #
597-3021-5xx	Red	1-30
597-3111-5xx	AlGaAs Red	1-30
597-3211-5xx	Orange	1-30
597-3301-5xx	Green	1-30
597-3401-5xx	Yellow	1-30
597-7701-5xx	Red/Green	1-31
597-7721-5xx	Yellow/Green	1-31

Features

- Can be mounted in arrays spaced .200 apart (min.)
- High transmissivity polycarbonate material
- UL94V-0 compliance
- ESD protection (circuit isolation from front panel)
- Wide viewing angle
- Arrays reduce insertion costs
- Allows bi-level SMT indicators
- Secures to PCB by press-fit

LED Data

For absolute maximum ratings and other electrical and optical data on the recommended LEDs, refer to LED data sheets.

Operating/Storage Temperature

-30°C to +100°C

Dialight Optopipe[®] Light Pipe Description

This Optopipe[®] is a standard design intended as a SMT compatible replacement for our 553 Series Circuit Board Indicators. The light outputs are spaced vertically .100" from the PCB to the first element, and then 0.200" between the top and bottom elements. We recommend a minimum of 0.200" between light pipes as a normal mounting pitch. This Optopipe[®] is held in place by 2 press-fit pins along the bottom of the device. The light pipe is not attached to the panel at any point but can protrude through holes in the panel. The gently arcing emitting end sticks through the plastic or metal panel. The light source is Dialight's 597 Series Type 1208 LED. The light pipe material is water clear transmissive polycarbonate rated UL94-V0, and has a 35% oxygen index.

Dialight can provide custom Optopipe[®] solutions for your applications.