



Chipsmall Limited consists of a professional team with an average of over 10 year of expertise in the distribution of electronic components. Based in Hongkong, we have already established firm and mutual-benefit business relationships with customers from,Europe,America and south Asia,supplying obsolete and hard-to-find components to meet their specific needs.

With the principle of “Quality Parts,Customers Priority,Honest Operation,and Considerate Service”,our business mainly focus on the distribution of electronic components. Line cards we deal with include Microchip,ALPS,ROHM,Xilinx,Pulse,ON,Everlight and Freescale. Main products comprise IC,Modules,Potentiometer,IC Socket,Relay,Connector.Our parts cover such applications as commercial,industrial, and automotives areas.

We are looking forward to setting up business relationship with you and hope to provide you with the best service and solution. Let us make a better world for our industry!



## Contact us

Tel: +86-755-8981 8866 Fax: +86-755-8427 6832

Email & Skype: [info@chipsmall.com](mailto:info@chipsmall.com) Web: [www.chipsmall.com](http://www.chipsmall.com)

Address: A1208, Overseas Decoration Building, #122 Zhenhua RD., Futian, Shenzhen, China

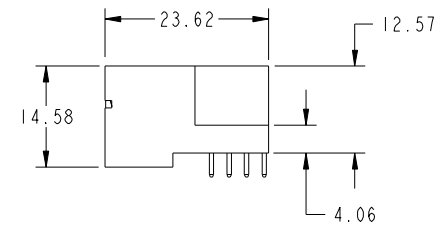
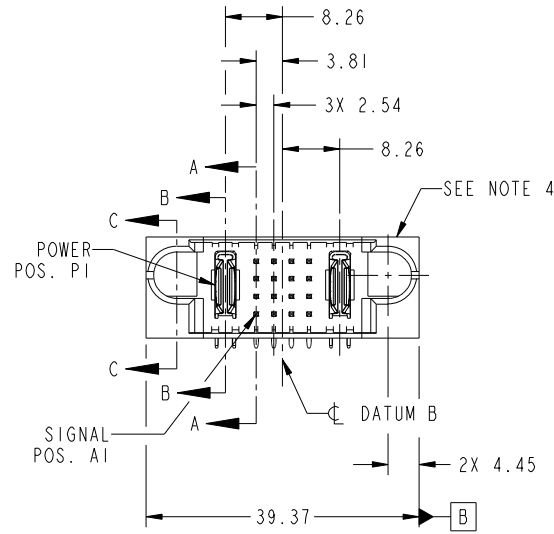


Tous droits strictement reserves. Reproduction ou communication a des tiers interdite sous quelque forme que ce soit sans autorisation écrite du propriétaire. Propriete de c FCI. Droits de reproduction FCI.



All rights strictly reserved. Reproduction or issue to third parties in any form whatever is not permitted without written authority from the proprietor. Property of FCI. Copyright FCI.

PRODUCT NO.	ROWS	POWER		SIGNAL				POWER	
		E1	P1	1	2	3	4	P2	E2
51730-155-- NOTE 3	D C B A		PA	UUUU	TTTGT	SSSFS	RRRRR	PA	



CODE	DIM "M" MATING LENGTH	CONTACT TYPE
U	[6.86]	SIGNAL
T	[6.86]	SIGNAL
S	[6.86]	SIGNAL
R	[6.86]	SIGNAL
PA	[N/A]	POWER
F	[5.59]	SIGNAL
G	[5.59]	SIGNAL

mat'l code				SEE NOTE		tolerances unless otherwise specified		CUSTOMER		FCI		www.fciconnect.com	
ltr	ecn no.	dr	date			linear	0.X ±0.5	COPY		projection		title	IP + 16S + IP
A	DG08-0292	SH	10/20/08				0.XX ±0.25					RIGHT ANGLE SOLDER HEADER	
						angles	0.XXX ±0.1					product family	PwrBlade
						dr	Sincere He 10/14/08					code	213
						enrg	Sincere He 10/14/08					size	dwg no
						chr	Gary Hsieh 10/14/08					sheet	1 of 4
						appd	JOSEPH HSIA 10/14/08					scale	1:1
sheet index	revision sheet	A	A	A	A								
		1	2	3	4								

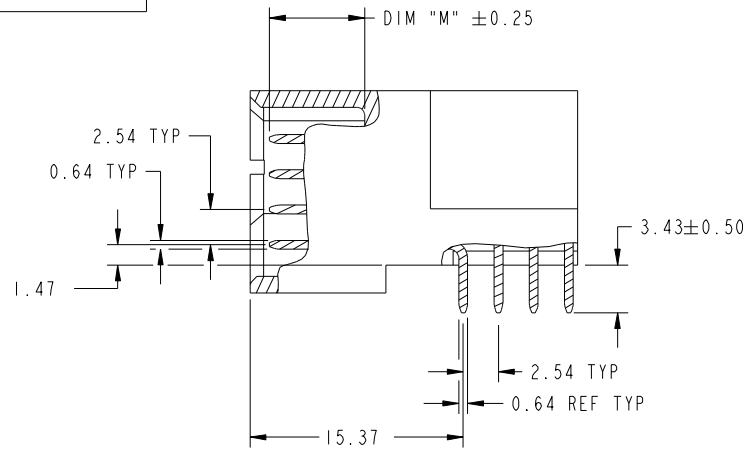
cage code 22526

Tous droits strictement reserves. Reproduction ou communication a des tiers interdite sous quelque forme que ce soit sans autorisation écrite du propriétaire. Propriete de c FCI. Droits de reproduction FCI.

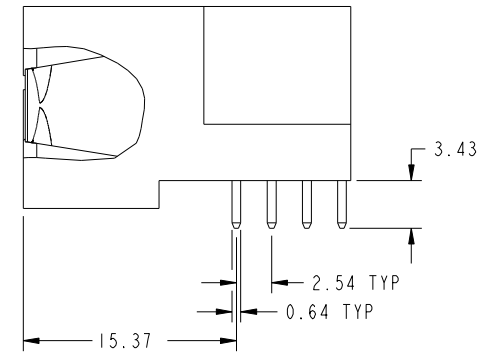


All rights strictly reserved. Reproduction or issue to third parties in any form whatever is not permitted without written authority from the proprietor. Property of FCI. Copyright FCI.

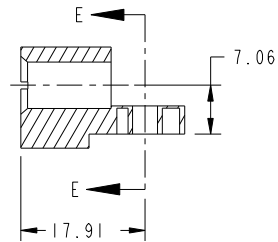
PRODUCT NUMBER  
51730-155-  
NOTE: 3



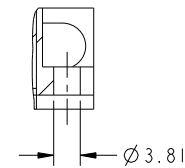
BROKEN-OUT SECTION A-A  
SCALE 2:1



BROKEN-OUT SECTION B-B  
SCALE 2:1



SECTION C-C



SECTION E-E

mat'l code				SEE NOTE		tolerances unless otherwise specified		CUSTOMER		FCI	
litr	ecn no.	dr	date			linear	0.X ±0.5	COPY		www.fciconnect.com	
A						linear	0.XX ±0.25	projection		title	
						angles	0.XXX ±0.1			IP + 16S + 1P	
						dr	0° ±2°			RIGHT ANGLE SOLDER HEADER	
						enr	Sincere He 10/14/08			product family	
						enr	Sincere He 10/14/08			PwrBlade	
						chr	Gary Hsieh 10/14/08			code	
						appd	JOSEPH HSIA 10/14/08			213	
sheet index		revision sheet								size	
										dwg no	
										51730-155	
										sheet	
										2 of 4	
										cage code	
										22526	

Pro/E

3

cage code 22526

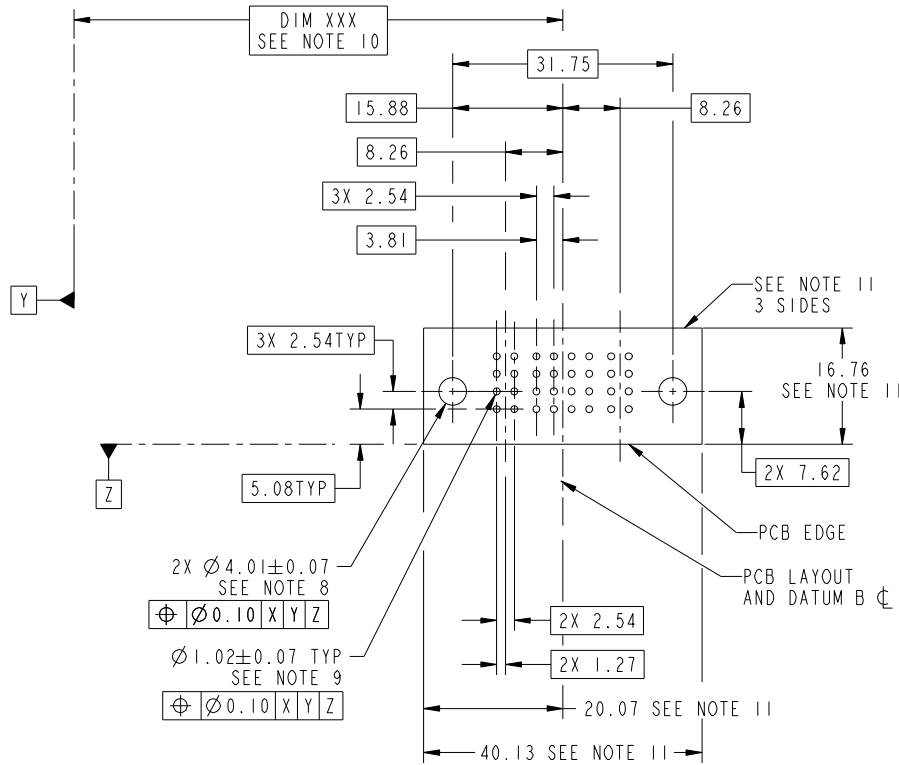
4

Tous droits strictement reserves. Reproduction ou communication a des tiers interdite sous quelque forme que ce soit sans autorisation écrite du propriétaire. Propriete de c FCI. Droits de reproduction FCI.

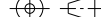


All rights strictly reserved. Reproduction or issue to third parties in any form whatever is not permitted without written authority from the proprietor. Property of FCI. Copyright FCI.

PRODUCT NUMBER  
51730-155-  
NOTE: 3



RECOMMENDED PCB LAYOUT

mat'l code				SEE NOTE		tolerances unless otherwise specified		CUSTOMER		<div>FCI</div> <div>www.fciconnect.com</div>	
litr	ecn no.	dr	date	linear	0.X ±0.5		COPY		<div>projection</div> <div></div>	title IP + 16S + 1P RIGHT ANGLE SOLDER HEADER	
A			0.XX ±0.25								
			0.XXX ±0.1								
				angles	0° ±2°		<div>MM</div> <div>scale 1:1</div>		product family PwrBlade		
				dr	Sincere He	10/14/08	size dwg no A 51730-155		code 213		
				enrg	Sincere He	10/14/08			sheet 3 of 4		
				chr	Gary Hsieh	10/14/08					
				appd	JOSEPH HSIA	10/14/08					
sheet index		revision sheet									

Tous droits strictement reserves. Reproduction ou communication a des tiers interdite sous quelque forme que ce soit sans autorisation écrite du propriétaire. Propriete de c FCI. Droits de reproduction FCI.



All rights strictly reserved. Reproduction or issue to third parties in any form whatever is not permitted without written authority from the proprietor. Property of FCI. Copyright FCI.

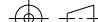

PRODUCT NUMBER
51730-155- NOTE: 3

NOTES:

1. DIMENSIONS AND TOLERANCES ARE IN ACCORDANCE WITH  
ASME Y14.5M, 1994 UNLESS OTHERWISE SPECIFIED.

CONNECTOR NOTES:

2. HOUSING MATERIAL: UL 94 V-0 GLASS FILLED HIGH-TEMP THERMOPLASTIC  
POWER CONTACT MATERIAL: COPPER ALLOY  
SIGNAL PIN MATERIAL: COPPER ALLOY
  3. 51730-155; 51730-155LF PLATING SPEC. SEE PRINT: 10064183, ITEM 1; ITEM 2
  4. MANUFACTURER'S NAME, P/N, AND DATE CODE TO APPEAR ON  
THIS SURFACE.
  5. PRODUCT SPECIFICATION GS-12-149.  
APPLICATION SPECIFICATION BUS-20-067.
  6. PACKAGED IN TRAYS.
- PCB NOTES:
7. ALL HOLE DIAMETERS ARE FINISHED HOLE SIZE.
  8. MOUNTING HOLES, WHERE APPLICABLE, ARE UNPLATED.
  9.  $\varnothing 1.151 \pm 0.025$  DRILLED HOLES PLATED WITH  
0.008 MIN SnPb OR Sn OVER 0.03  
TO 0.08 Cu PLATING TO ACHIEVE  
 $\varnothing 1.02 \pm .07$  HOLE.
  10. "DIM XXX" TO BE DETERMINED BY THE CUSTOMER.
  11. CONNECTOR KEEP-OUT ZONE.

mat'l code				SEE NOTE		tolerances unless otherwise specified		CUSTOMER		<div>FCI</div> <div>www.fciconnect.com</div>			
litr	ecn no.	dr	date	linear	0.X ± 0.5		projection 	COPY	title IP + 16S + 1P RIGHT ANGLE SOLDER HEADER				
A			0.XX ± 0.25										
			0.XXX ± 0.1										
				angles	0° ± 2°		 MM	scale 1:1	product family		PwrBlade	code	
			dr	Sincere He	10/14/08	size			dwg no	51730-155	213		
			engr	Sincere He	10/14/08								
			chr	Gary Hsieh	10/14/08	A							
			appd	JOSEPH HSIA	10/14/08								
sheet index	revision sheet												sheet 4 of 4

cage code 22526