



Chipsmall Limited consists of a professional team with an average of over 10 year of expertise in the distribution of electronic components. Based in Hongkong, we have already established firm and mutual-benefit business relationships with customers from,Europe,America and south Asia,supplying obsolete and hard-to-find components to meet their specific needs.

With the principle of “Quality Parts,Customers Priority,Honest Operation,and Considerate Service”,our business mainly focus on the distribution of electronic components. Line cards we deal with include Microchip,ALPS,ROHM,Xilinx,Pulse,ON,Everlight and Freescale. Main products comprise IC,Modules,Potentiometer,IC Socket,Relay,Connector.Our parts cover such applications as commercial,industrial, and automotives areas.

We are looking forward to setting up business relationship with you and hope to provide you with the best service and solution. Let us make a better world for our industry!



Contact us

Tel: +86-755-8981 8866 Fax: +86-755-8427 6832

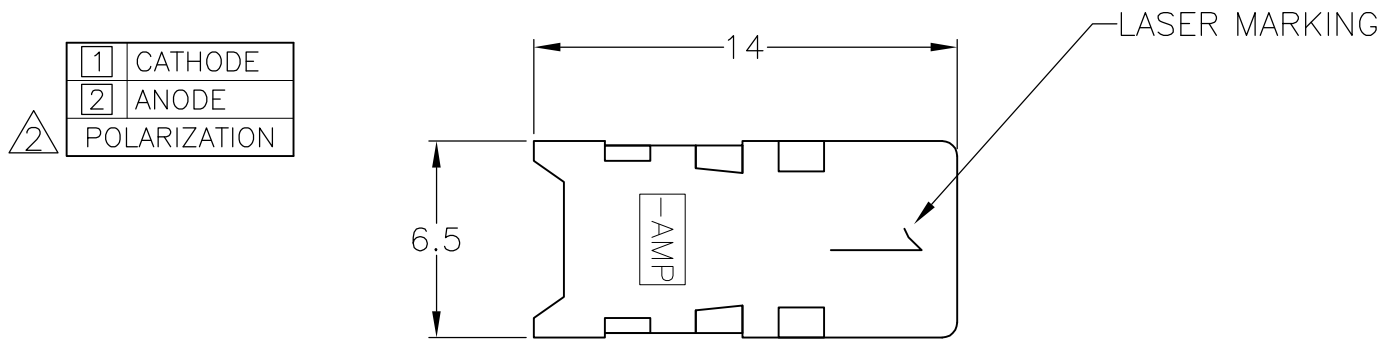
Email & Skype: info@chipsmall.com Web: www.chipsmall.com

Address: A1208, Overseas Decoration Building, #122 Zhenhua RD., Futian, Shenzhen, China



THIS DRAWING IS UNPUBLISHED. RELEASED FOR PUBLICATION
 © COPYRIGHT BY TYCO ELECTRONICS CORPORATION. ALL RIGHTS RESERVED.

LOC J	DIST	REVISIONS 変更			DATE	DWN	APVD
		P	LTR	DESCRIPTION			
			A	RELEASED	27APR07	T.K	T.H



OPTICAL DEVICE PERFORMANCE

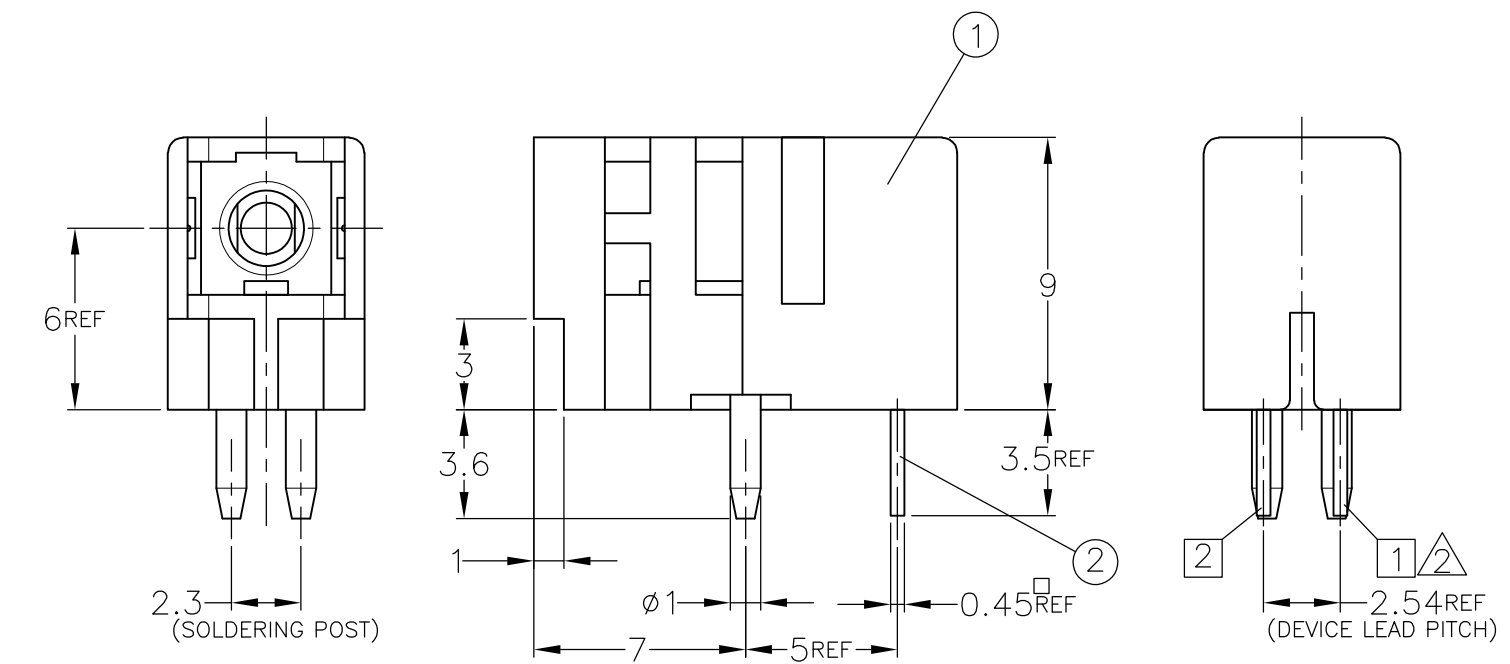
Absolute Maximum Ratings (Ta=25°C)

CHARACTERISTICS	SYMBOL	RATING	UNIT
Forward current (DC)	I _F	40	mA
Reverse voltage	V _R	5	V
Power dissipation	P _{MAX.}	150 *1	mW
Operating temperature	T _{opr}	-10 ~ +70	°C
Storage temperature	T _{stg}	-40 ~ +85	°C
Lead soldering condition	T _{sol}	230°C, 5sec MAX.	

*1 Derate power dissipation at a rate of -2mW/°C above Ta=25°C

Electrical and Optical Characteristics (Ta=25°C)

CHARACTERISTICS	SYMBOL	RATING	MIN.	TYP.	MAX.	UNIT
Fiber coupled output power	P _o	I _F =20mA \triangle 3	-12.5	--	--	dBm
Forward voltage	V _F	I _F =20mA	--	1.9	2.3	V
Reverse current	I _R	V _R =5V	--	--	10	μA
Peak emission wavelength	λ _p	I _F =20mA	--	650	--	nm
Spectral half width(FWHM)	Δλ	I _F =20mA	--	20	--	nm

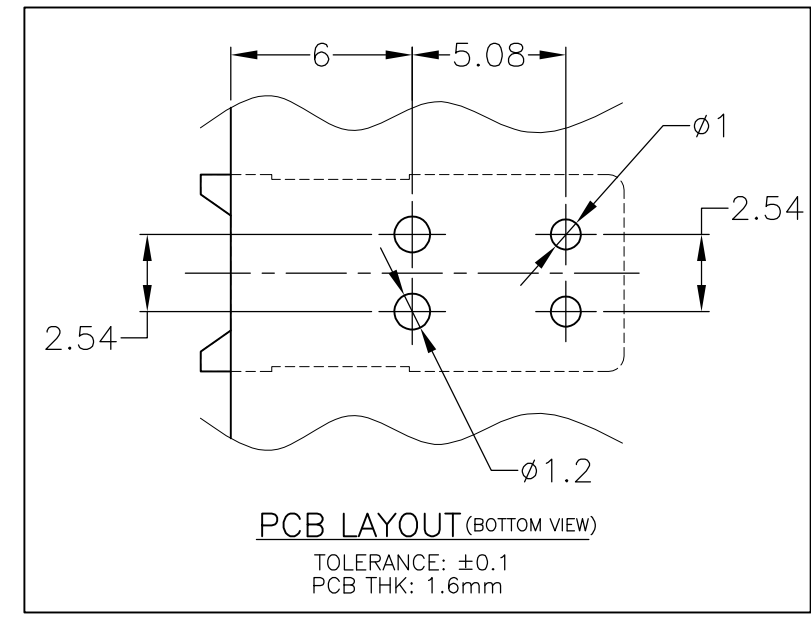


- MATERIAL
ADM MOLD: THERMOPLASTIC UL 94V-0
SOLDERING POST: TIN PLATING

\triangle 2 POLARIZATION: SEE TABLE

\triangle 3 UNSING FIBER CABLE.
NA=0.5, CORE/CLAD=980/1000μm, LENGTH=1m

- FLUX CREAMING.
USE ALCOHOL FOR CREAMING.
CREAMING TIME: 30sec. MAX.
SOLVENTS TEMPERATURE: 45°C MAX.



1	OPTICAL DEVICE (LED)	(2)	5174134-1
1	MINI-DNP SIMPLEX ADM HSG	(1)	
QTY	PART NAME	ITEM	PART No.
COMPONENT PARTS			

THIS DRAWING IS A CONTROLLED DOCUMENT.		DWN T.KIKUTA 27APR2007	Tyco Electronics AMP K.K. Kawasaki, Japan													
DIMENSIONS: 単位: 耗 mm		CHK T.HAYASHI 27APR2007														
TOLERANCES UNLESS OTHERWISE SPECIFIED: 一般公差		APVD T.HAYASHI 27APR2007	NAME 名称 SIMPLEX ADM ASS'Y (LED) AMP OPTIMATE MINI-DNP CONN.													
<table border="1"> <tr><td>0 PLC</td><td>± 0.3</td></tr> <tr><td>1 PLC</td><td>± 0.3</td></tr> <tr><td>2 PLC</td><td>±</td></tr> <tr><td>3 PLC</td><td>±</td></tr> <tr><td>4 PLC</td><td>±</td></tr> <tr><td>ANGLES</td><td>± 1°</td></tr> </table>		0 PLC	± 0.3	1 PLC	± 0.3	2 PLC	±	3 PLC	±	4 PLC	±	ANGLES	± 1°	PRODUCT SPEC 製品規格	SIZE A3	
0 PLC	± 0.3															
1 PLC	± 0.3															
2 PLC	±															
3 PLC	±															
4 PLC	±															
ANGLES	± 1°															
MATERIAL 材料 SEE TABLE		APPLICATION SPEC 取付適用規格	CAGE CODE 00779	DRAWING NO 番号 G=5174134-1												
FINISH 仕上		WEIGHT 0.82g	RESTRICTED TO													
CUSTOMER DRAWING		SCALE 尺度 4:1	SHEET 1 OF 1	REV A												