



Chipsmall Limited consists of a professional team with an average of over 10 year of expertise in the distribution of electronic components. Based in Hongkong, we have already established firm and mutual-benefit business relationships with customers from,Europe,America and south Asia,supplying obsolete and hard-to-find components to meet their specific needs.

With the principle of “Quality Parts,Customers Priority,Honest Operation,and Considerate Service”,our business mainly focus on the distribution of electronic components. Line cards we deal with include Microchip,ALPS,ROHM,Xilinx,Pulse,ON,Everlight and Freescale. Main products comprise IC,Modules,Potentiometer,IC Socket,Relay,Connector.Our parts cover such applications as commercial,industrial, and automotives areas.

We are looking forward to setting up business relationship with you and hope to provide you with the best service and solution. Let us make a better world for our industry!



Contact us

Tel: +86-755-8981 8866 Fax: +86-755-8427 6832

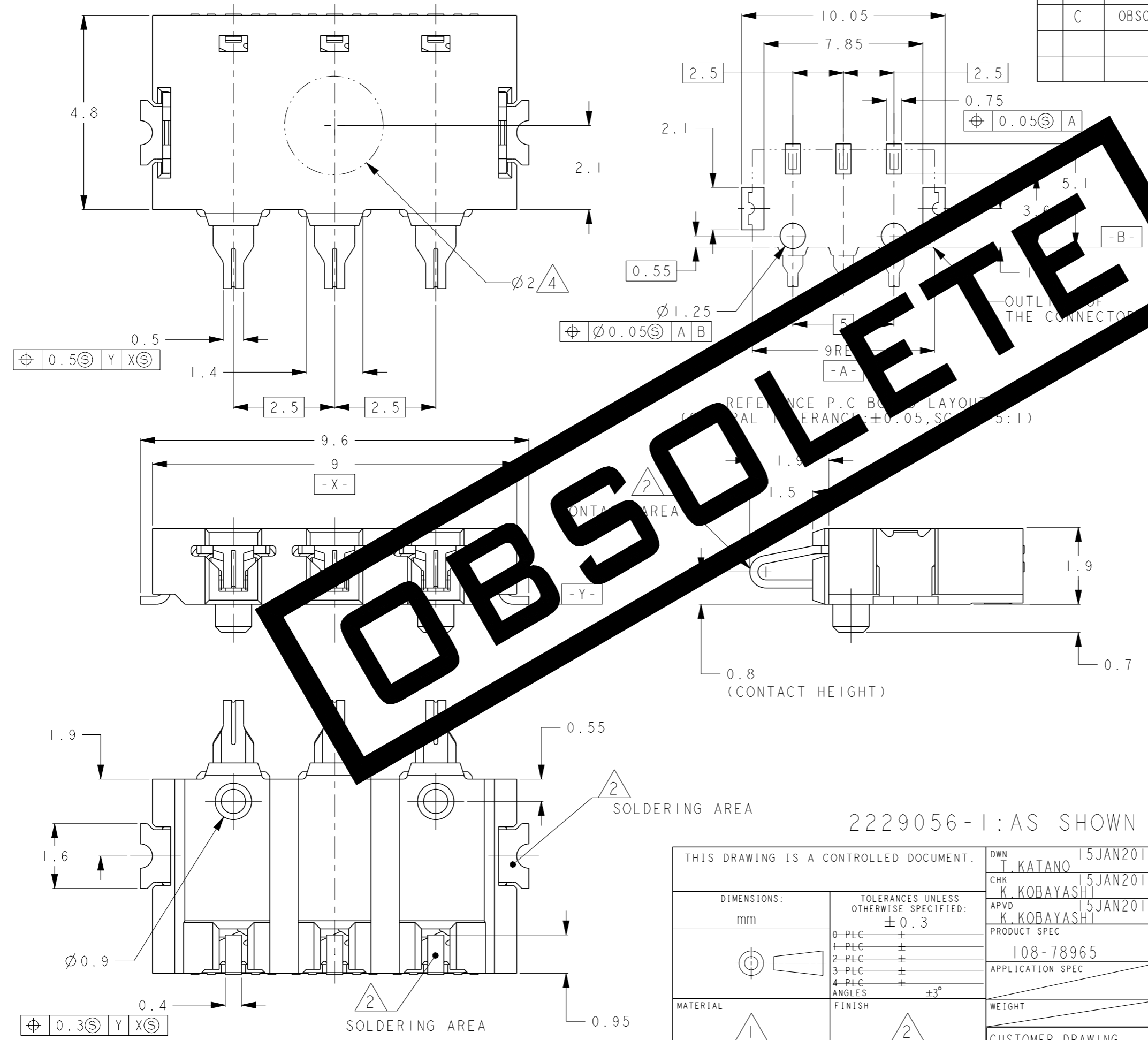
Email & Skype: info@chipsmall.com Web: www.chipsmall.com

Address: A1208, Overseas Decoration Building, #122 Zhenhua RD., Futian, Shenzhen, China



THIS DRAWING IS UNPUBLISHED. RELEASED FOR PUBLICATION 2012
 © COPYRIGHT 2012 BY - ALL RIGHTS RESERVED.

LOC	DIST	REVISIONS			
P	LTR	DESCRIPTION	DATE	DWN	APVD
J	-				
	B	REVISED	ECR-13-003830	11MAR2013	T.K K.K
	C	OBSOLETE ECR-17-017873		18DEC2017	AL WH



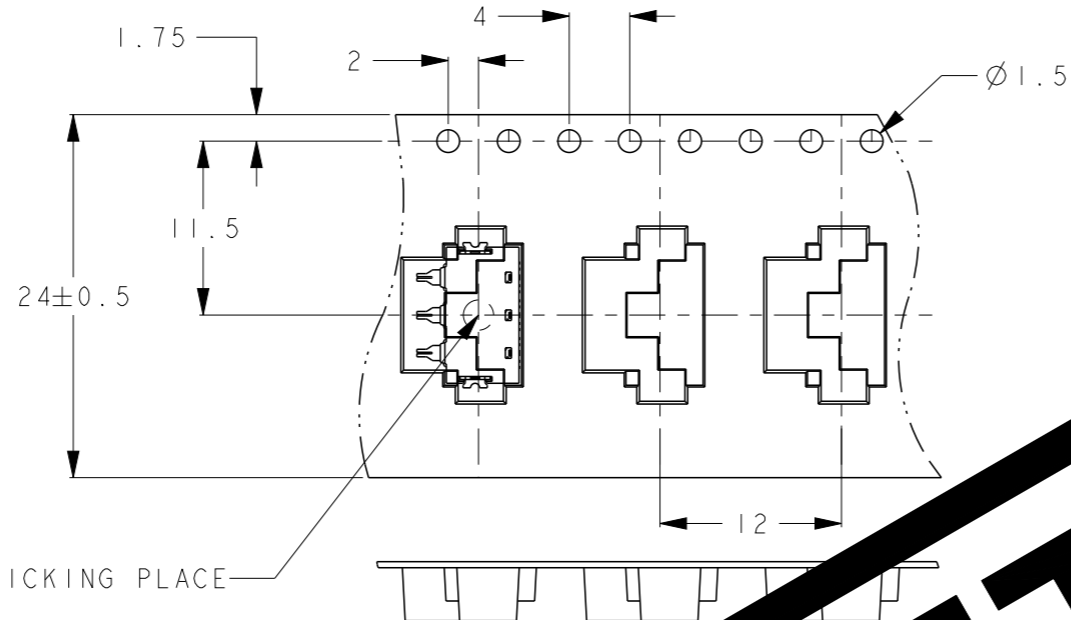
- △ MATERIAL
 CONTACT: COPPER ALLOY
 HOUSING: THERMOPLASTIC, UL94V-0, BLACK
 SOLDER PEG: COPPER ALLOY
- △ FINISH
 CONTACT: NICKEL ALL OVER UNDER PLATING
 THICKNESS, 1μm MIN.
 GOLD PLATING AT CONTACT AREA
 THICKNESS, 0.3μm MIN.
 GOLD FLASH PLATING AT SOLDERING AREA
 THICKNESS, 0.05μm MIN.
 SOLDER PEG: NICKEL ALL OVER UNDER PLATING
 THICKNESS, 1μm MIN.
 GOLD FLASH PLATING AT SOLDERING AREA
 THICKNESS, 0.05μm MIN.
- 3. COPLANARITY 0.1MAX.
- △ PICK UP AREA
- 5. EMOSS AND COVER TAPE : ESD PROTECTION MATERIAL
- 6. STORAGE LIFE: UNDER 6 MONTHS
 WITHOUT DRYPACK AND BAKING PROCESS

2229056-1: AS SHOWN

THIS DRAWING IS A CONTROLLED DOCUMENT.		DWN	T. KATANO	15JAN2013	TE Connectivity
DIMENSIONS: mm		CHK	K. KOBAYASHI	15JAN2013	
TOLERANCES UNLESS OTHERWISE SPECIFIED: ±0.3		APVD	K. KOBAYASHI	15JAN2013	
0-PLC ± 1-PLC ± 2-PLC ± 3-PLC ± 4-PLC ± ANGLES ±3°		PRODUCT SPEC		NAME	
MATERIAL		APPLICATION SPEC		LOW PROFILE BATTERY CONNECTOR 3 POS. CONTACT HEIGHT 0.8mm	
FINISH		WEIGHT		SIZE	CAGE CODE
△ 1 △ 2		CUSTOMER DRAWING		A3	00779
		SCALE		DRAWING NO	
		10:1		C-2229056	
		SHEET		RESTRICTED TO	
		1 OF 2			
		REV		C	

P	LTR	DESCRIPTION	DATE	DWN	APVD
	-	SEE SHEET 1	-	-	-

→ DIRECTION OFF TOP OF REEL



CENTER OF THE PICKING PLACE

FLANGE CORE DIA
Ø100REF

Ø330REF
REEL DIA.

30.4 REF
REEL WIDTH

24.4REF

300REF
WITHOUT CHARGE

WITH PRODUCT CHARGE
1400PCS/REEL

WITHOUT CHARGE
20HOLES MIN.

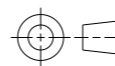
300 REF
WEED THE COVER TAPE.

165°~180°
PEELING ANGLE
0.1~0.7N(300mm/min)
PEELING STRENGTH

OBSCOLETE

THIS DRAWING IS A CONTROLLED DOCUMENT.

DIMENSIONS:
mm



TOLERANCES UNLESS
OTHERWISE SPECIFIED:
±0.3

Ø PLC	±
1 PLC	±
2 PLC	±
3 PLC	±
4 PLC	±
ANGLES	±3°
FINISH	

MATERIAL

DWN
CHK
APVD
PRODUCT SPEC
APPLICATION SPEC
WEIGHT
CUSTOMER DRAWING



TE Connectivity

NAME
LOW PROFILE BATTERY CONNECTOR 3 POS.
CONTACT HEIGHT 0.8mm

SIZE	CAGE CODE	DRAWING NO	RESTRICTED TO
A300779	C	2229056	

SCALE 2:1 SHEET 2 OF 2 REV C