



Chipsmall Limited consists of a professional team with an average of over 10 year of expertise in the distribution of electronic components. Based in Hongkong, we have already established firm and mutual-benefit business relationships with customers from,Europe,America and south Asia,supplying obsolete and hard-to-find components to meet their specific needs.

With the principle of “Quality Parts,Customers Priority,Honest Operation,and Considerate Service”,our business mainly focus on the distribution of electronic components. Line cards we deal with include Microchip,ALPS,ROHM,Xilinx,Pulse,ON,Everlight and Freescale. Main products comprise IC,Modules,Potentiometer,IC Socket,Relay,Connector.Our parts cover such applications as commercial,industrial, and automotives areas.

We are looking forward to setting up business relationship with you and hope to provide you with the best service and solution. Let us make a better world for our industry!



## Contact us

Tel: +86-755-8981 8866 Fax: +86-755-8427 6832

Email & Skype: info@chipsmall.com Web: www.chipsmall.com

Address: A1208, Overseas Decoration Building, #122 Zhenhua RD., Futian, Shenzhen, China



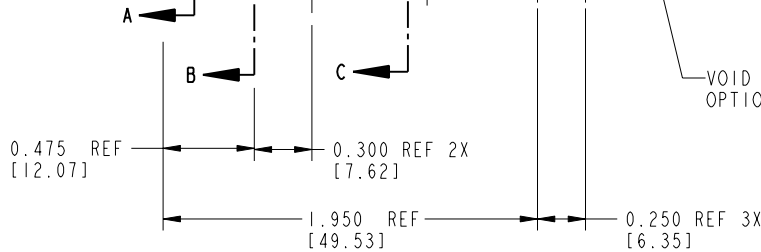
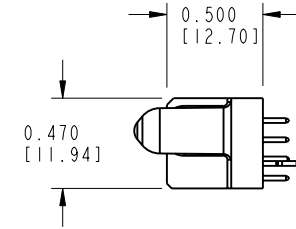
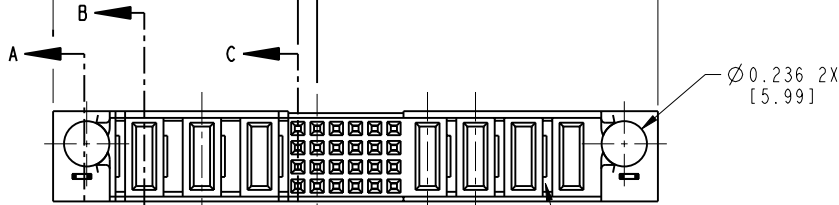
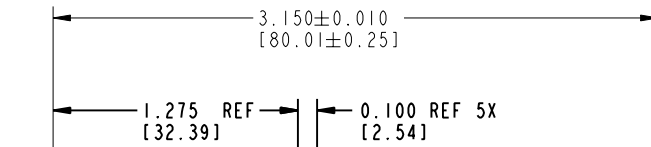
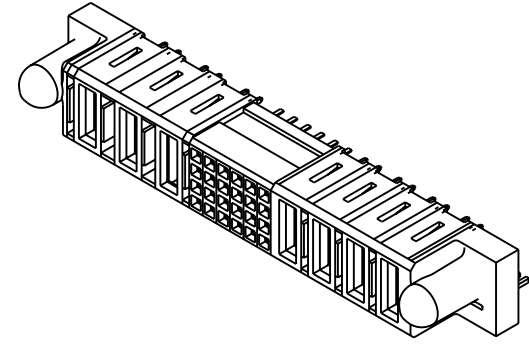
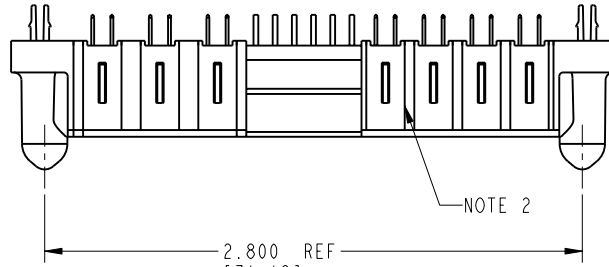
Tous droits strictement réservés. Reproduction ou communication o des liens interdite sous quelque forme que ce soit sans autorisation écrite du propriétaire. Propriete de c FCI. Droits de reproduction FCI.



All rights strictly reserved. Reproduction or issue to third parties in any form, whatever is not permitted without written authority from the proprietor. Property of FCI. Copyright FCI.

PRODUCT NUMBER

51797-001--  
NOTE: ③



mat'l code		NOTE 1		tolerances unless otherwise specified		CUSTOMER		FCI	
lfr	ecn no.	dr	date	linear	.XX±.01/0.X±0.3	COPY	www.fciconnect.com		
A	V02395	JRW	10-13-00		.XXX±.005/0.XX±0.13	projection	title 4P + 24S + 3ACP		
B	DG05-0192	SJ	06/27/05	angles	.XXXX±.0020/.XXX±.051	INCH/MM	VERTICAL SOLDER TAIL RECEPTACLE		
C	DG06-0244	JMG	06/22/06	dr	0°±2°	scale	product family PwrBlade		code 213
				engr	E. KORFF 06-23-00	1:1	size dwg no		sheet 1 of 3
				chr	J. BROWN 06-23-00		A 51797		
				appd	J. BROWN 06-23-00				
sheet index	revision sheet	C	C	C					
		1	2	3					

cage code 22526

Pro/E

PDM: Rev:C

STATUS: Released

Printed: Dec 20, 2010

Tous droits strictement réservés. Reproduction ou communication o des liers interdite sous quelque forme que ce soit sans autorisation écrite du propriétaire. Propriété de c FCI. Droits de reproduction FCI.

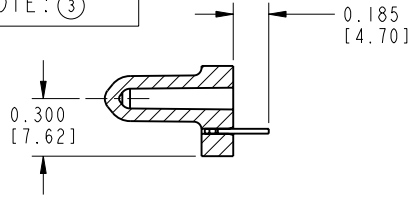


All rights strictly reserved. Reproduction or issue to third parties in any form, whenever is not permitted without written authority from the proprietor. Property of FCI. Copyright FCI.

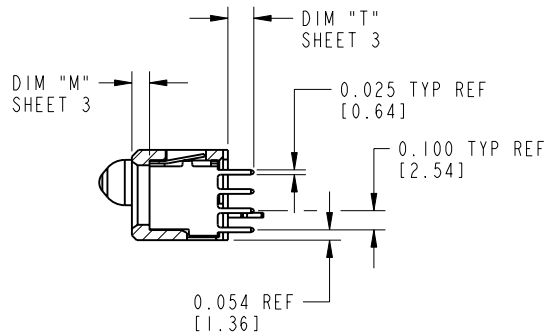
PRODUCT NUMBER

51797-001--

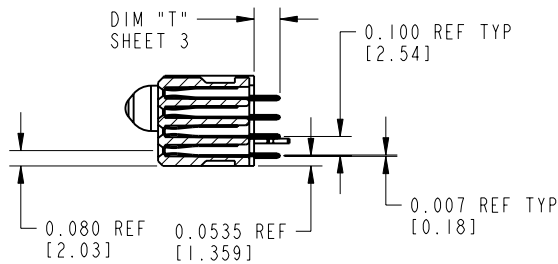
NOTE: ③



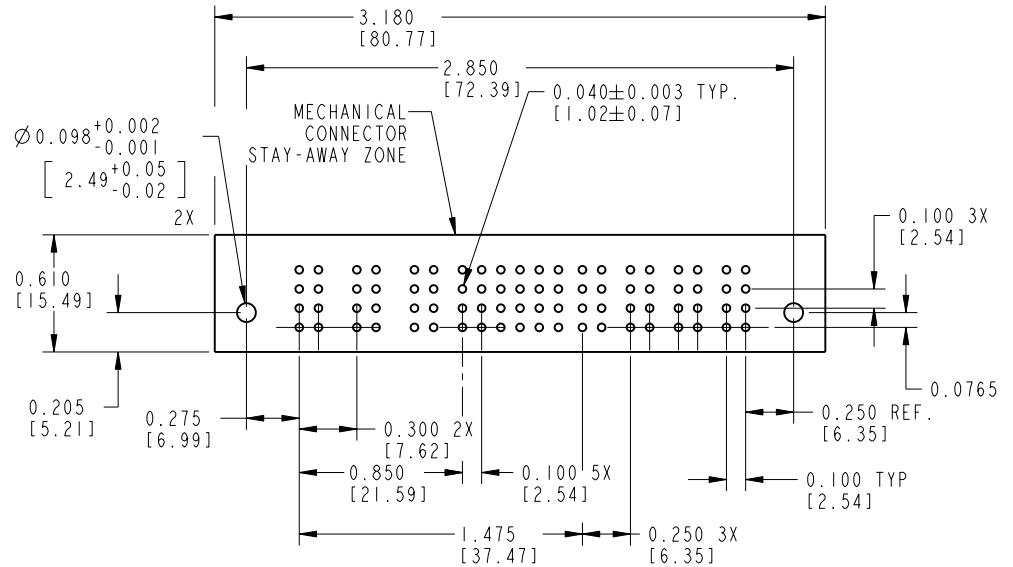
SECTION A-A



SECTION B-B



SECTION C-C



RECOMMENDED PCB LAYOUT

mat'l code		NOTE 1		tolerances unless otherwise specified		CUSTOMER		FCI	
ltr	ecn no.	dr	date	linear	.XX±.01/0.X±0.3	projection	COPY	www.fciconnect.com	
c				angles	.XXX±.005/0.XX±0.13	INCH/MM		title 4P + 24S + 3ACP	
				dr	.XXX±.0020/.XXX±.051	scale		VERTICAL SOLDER TAIL RECEPTACLE	
				engr	0°±2°	1:1		product family PwrBlade code 213	
				chr				size dwg no 51797 sheet 2	
				appd				A	
sheet index	revision sheet								

Pro/E

cage code 22526

PDM: Rev:C

STATUS: Released

Printed: Dec 20, 2010

Tous droits strictement reserves. Reproduction ou communication o des liers interdite sous quelque forme que ce soit sans autorisation ecrite du proprietaire. Propriete de c FCI. Droits de reproduction FCI.



All rights strictly reserved. Reproduction or issue to third parties in any form, whatever is not permitted without written authority from the proprietor. Property of FCI. Copyright FCI.

PRODUCT NUMBER  
51797-001--  
NOTE: ③

ITEM NO.	QTY	DIM "M" MATING LENGTH ±.010	DIM "T" TAIL LENGTH ±.010	CONTACT TYPE	PLATING FOR MATING	PLATING FOR TAIL
PD	6	0.092 [2.34]	0.135 [3.43]	POWER	30 u'' [.76um] Au	SnPb
PA	1	0.042 [1.07]	0.135 [3.43]	POWER	30 u'' [.76um] Au	SnPb
HA	2	N/A [N/A]	N/A [N/A]	HOLD-DOWN	N/A [N/A]	SnPb
E	24	N/A [N/A]	0.135 [3.43]	SIGNAL	30 u'' [.76um] Au	Sn

PRODUCT No.	ROWS	POWER				SIGNAL				POWER				E1				
		E2	P7	P6	P5	6	5	4	3	2	1	P4	P3		P2	P1		
51797 - 001-- NOTE: ③	D C B A		HA	PD	PD	PA	E	E	E	E	E	E	E	PD	PD	PD	PD	HA

CONNECTORS - NOTES:

- HOUSING MATERIAL: UL 94 V-0 GLASS FILLED HIGH TEMP THERMOPLASTIC  
SIGNAL CONTACT MATERIAL: COPPER ALLOY  
POWER CONTACT MATERIAL: COPPER ALLOY
- "MANUFACTURER" NAME, P/N, AND DATE CODE TO APPEAR ON THIS SURFACE
- 51797-001;51797-001LF;51797-001GLF PLATING SPEC. SEE PRINT:10064183
- PRODUCT SPECIFICATION GS-12-149

PCB - NOTES

- ALL DIMENSIONS ARE BASIC UNLESS OTHERWISE SPECIFIED.
- ALL THROUGH HOLES ARE LOCATED WITH A TRUE POSITION OF .004
- ALL HOLE DIAMETERS ARE FINISHED HOLE SIZE
- Ø 0.098 THROUGH HOLES ARE UNPLATED
- Ø .0453/1.151 DRILLED HOLES  
PLATED WITH .0003/.007 MIN SnPb  
OVER .001/.03 to .003/.08 Cu PLATING TO ACHIEVE  
A .040±.003/1.02±.08 HOLE

mat'l code		NOTE 1		tolerances unless otherwise specified		CUSTOMER		FCI	
lfr	ecn no.	dr	date	linear	.XX±.01/0.X±0.3	projection	COPY	www.fciconnect.com	
C				angles	.XXX±.005/0.XX±0.13 .XXX±.0020/.XXX±.051		title	4P + 24S + 3ACP VERTICAL SOLDER TAIL RECEPTACLE	
				dr	E. KORFF 06-23-00	INCH/MM	product family	PwrBlade	code
				engr	J. BROWN 06-23-00	scale	size	dwg no	213
				chr	J. BROWN 06-23-00	1:1	A	51797	sheet
				appd	J. BROWN 06-23-00				3
sheet index	revision sheet								

cage code 22526

Pro/E

PDM: Rev:C

STATUS: Released

Printed: Dec 20, 2010