



Chipsmall Limited consists of a professional team with an average of over 10 year of expertise in the distribution of electronic components. Based in Hongkong, we have already established firm and mutual-benefit business relationships with customers from,Europe,America and south Asia,supplying obsolete and hard-to-find components to meet their specific needs.

With the principle of “Quality Parts,Customers Priority,Honest Operation,and Considerate Service”,our business mainly focus on the distribution of electronic components. Line cards we deal with include Microchip,ALPS,ROHM,Xilinx,Pulse,ON,Everlight and Freescale. Main products comprise IC,Modules,Potentiometer,IC Socket,Relay,Connector.Our parts cover such applications as commercial,industrial, and automotives areas.

We are looking forward to setting up business relationship with you and hope to provide you with the best service and solution. Let us make a better world for our industry!



Contact us

Tel: +86-755-8981 8866 Fax: +86-755-8427 6832

Email & Skype: info@chipsmall.com Web: www.chipsmall.com

Address: A1208, Overseas Decoration Building, #122 Zhenhua RD., Futian, Shenzhen, China

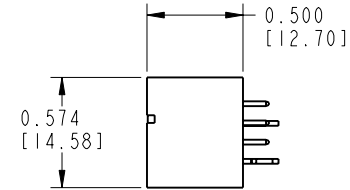
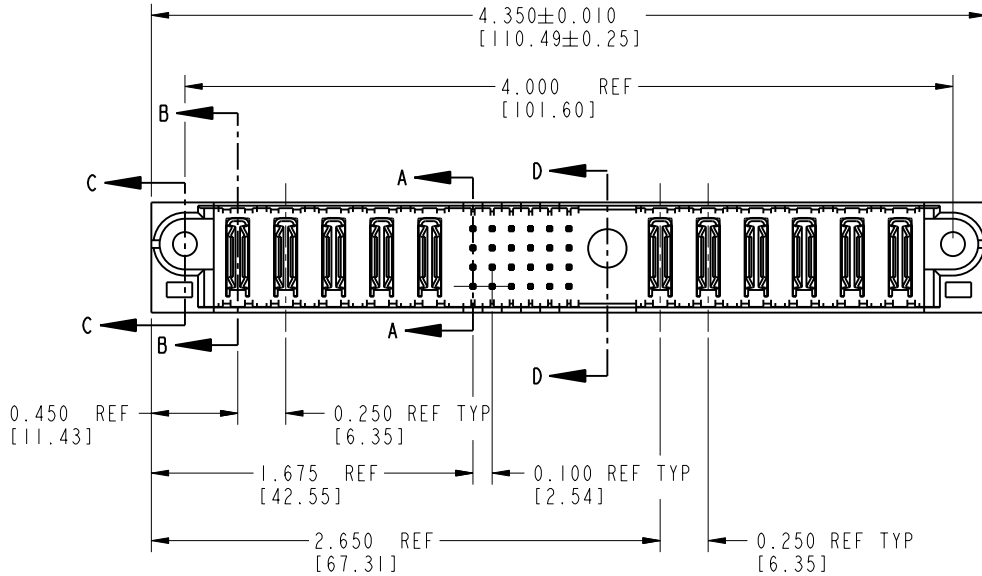
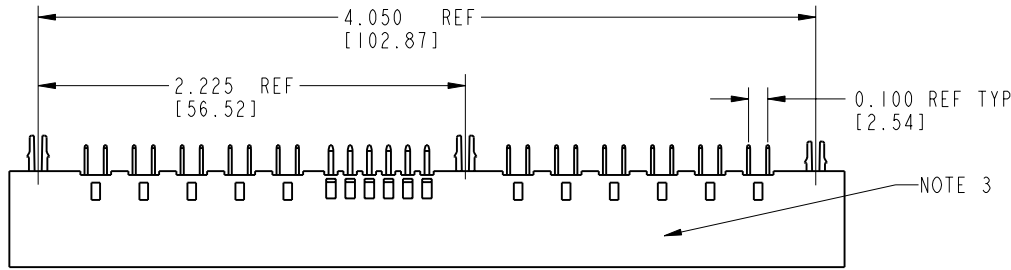


Tous droits strictement réservés. Reproduction ou communication o des liens interdité sous quelque forme que ce soit sans autorisation écrite du propriétaire. Propriété de c FCI. Droits de reproduction FCI.

All rights strictly reserved. Reproduction or issue to third parties in any form whenever is not permitted without written authority from the proprietor. Property of FCI. Copyright FCI.



PRODUCT No.	ROWS	POWER					SIGNAL						POWER								
		E1	P1	P2	P3	P4	P5	1	2	3	4	5	6	M1	P6	P7	P8	P9	P10	P11	E2
51860-001-- NOTE: 2	D C B A		PA	PA	PA	PA	PA	E	E	E	E	E	E	HA	PA	PA	PA	PA	PA	PA	



CODE	DIM "M" ±.010 [0.25]	CONTACT TYPE
E	0.270 [6.86]	SIGNAL
H	0.220 [5.59]	SIGNAL
PA	N/A [N/A]	POWER
HA	N/A [N/A]	HOLD-DOWN

mat'l code				NOTE 1		tolerances unless otherwise specified		CUSTOMER		 www.fciconnect.com	
ltr	ecn no.	dr	date	linear	.XX±.01/0.X±0.3		COPY		title		
A	V11839	JRW	07/06/01		.XXX±.005/0.XXX±0.13		projection		5P + 24S + 1M + 6P		
B	V12513	DAI	10/18/01		.XXX±.0020/0.XXX±0.051				VERTICAL SOLDER HEADER		
C	V21104	TAB	09/30/02		° ± °		INCH/MM		product family		code
D	DG05-0530	GuoJM	12/09/05	dr	C. DAILY	03/08/01	scale		PWRBLADE		213
				engr	E. TREECE	03/07/01	1:1		size		sheet
				chr	E. TREECE	03/08/01			dwg no		1 of 3
				appd	E. TREECE	03/08/01			A 51860		
sheet index	revision sheet	D	D	D							
		1	2	3							

1 | 2

Pro/E

3 |

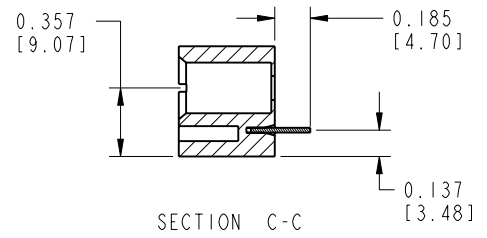
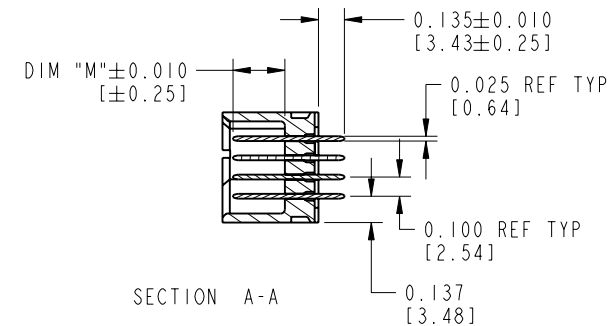
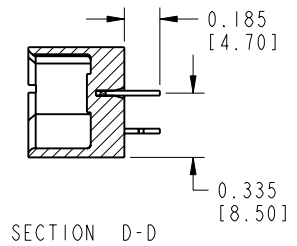
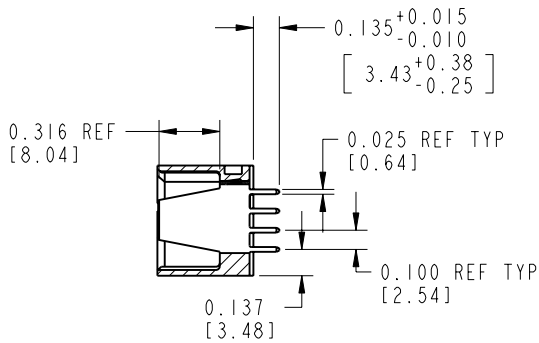
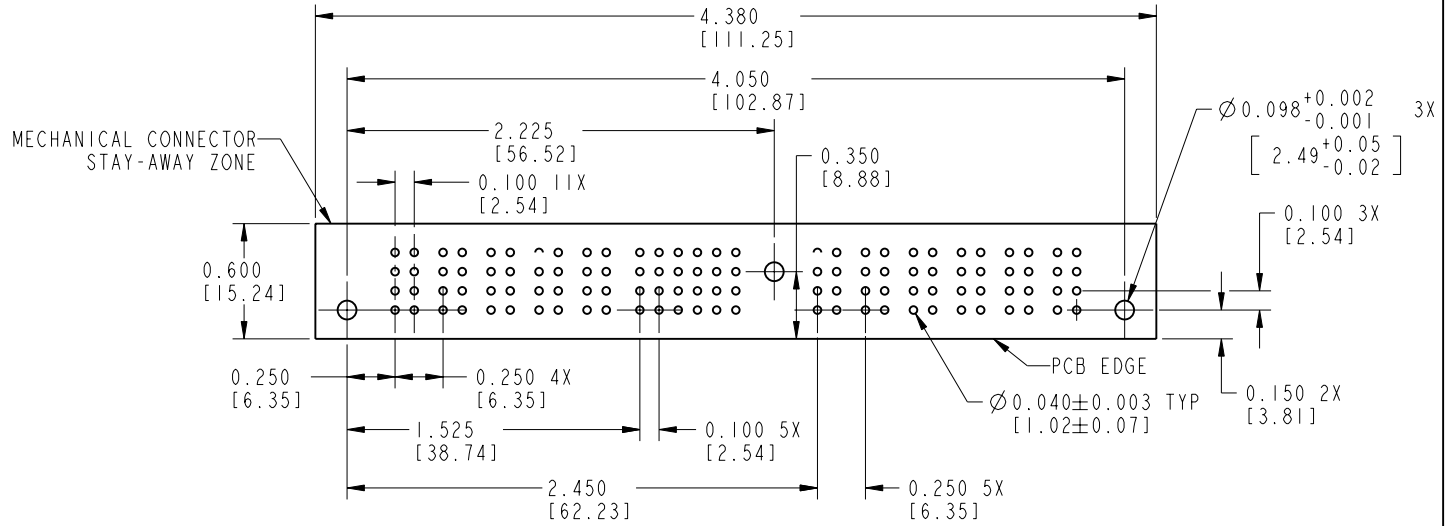
coge code 22526

4

Tous droits strictement réservés. Reproduction ou communication o des liers interdite sous quelque forme que ce soit sans autorisation écrite du propriétaire. Propriete de c FCI. Droits de reproduction FCI.

All rights strictly reserved. Reproduction or issue to third parties in any form, whomever is not permitted without written authority from the proprietor. Property of FCI. Copyright FCI.

PRODUCT NUMBER
51860-001--
NOTE: 2



mat'l code		NOTE 1		tolerances unless otherwise specified		CUSTOMER		FCI	
lfr	ecn no.	dr	date	linear	.XX±.01/0.X±0.3	projection	COPY	www.fciconnect.com	
D				angles	.XXX±.005/0.XX±0.13			title 5P + 24S + 1M + 6P	
				dr	.XXX±.0020/0.XXX±0.051			VERTICAL SOLDER HEADER	
				enr	C. DAILY 03/08/01	INCH/MM	product family	PWRBLADE	code
				chr	E. TREECE 03/07/01	scale	size	dwg no	213
				appd	E. TREECE 03/08/01	1:1	A	51860	sheet
sheet index	revision sheet								2

Pro/E 3 coge code 22526 4

Tous droits strictement réservés. Reproduction ou communication o des liers interdite sous quelque forme que ce soit sans autorisation écrite du propriétaire. Propriete de c FCI. Droits de reproduction FCI.

A
FCI

All rights strictly reserved. Reproduction or issue to third parties in any form, whatever is not permitted without written authority from the proprietor. Property of FCI. Copyright FCI.

A

B

PRODUCT NUMBER

51860-001__
NOTE: 2

CONNECTOR NOTES:

1. HOUSING MATERIAL: UL 94 V-0 GLASS FILLED HIGH TEMP THERMOPLASTIC
POWER CONTACT MATERIAL: COPPER ALLOY
SIGNAL CONTACT MATERIAL: COPPER ALLOY

2. PLATING:

51860-001 Singal Pin:30u"/0.76um Au OVER 50u"/1.27um Ni ON THE CONTACT AREA.
AND 100u"/2.54um SnPb PLATING OVER 50u"/1.27um Ni ON THE TERMINATION SECTION.
Power Pin:30u"/0.76um Au OVER 50u"/1.27um Ni ON THE CONTACT AREA,
AND 100u"/2.54um SnPb PLATING OVER 50u"/1.27um Ni ON THE TERMINATION SECTION.

51860-001LF Singal Pin:30u"/0.76um Au OVER 50u"/1.27um Ni ON THE CONTACT AREA.
AND 78u"/2.00um Sn PLATING OVER 50u"/1.27um Ni ON THE TERMINATION SECTION.
Power Pin:30u"/0.76um Au OVER 50u"/1.27um Ni ON THE CONTACT AREA,
AND 78u"/2.00um Sn PLATING OVER 50u"/1.27um Ni ON THE TERMINATION SECTION.

PART NUMBER 51860-001LF MEETS EUROPEAN UNION DIRECTIVE AND OTHER COUNTRY REGULATIONS AS DESCRIBED IN GS-22-008.

THE HOUSING WILL WITHSTAND EXPOSURE TO 260° PEAK TEMPERATURE FOR 10 SECONDS IN A WAVE SOLDER APPLICATION WITH A CIRCUIT BOARD.

3. "MANUFACTURER'S" NAME, P/N, AND DATE CODE TO APPEAR ON THIS SURFACE

4. PRODUCT SPECIFICATION GS-12-149

5. DIMENSIONS AND TOLERANCES ARE IN ACCORDANCE WITH ASME Y14.5M, 1994 UNLESS OTHERWISE SPECIFIED.

PCB NOTES:


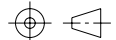
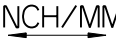
6. ALL DIMENSIONS ARE BASIC UNLESS OTHERWISE SPECIFIED.

7. ALL THROUGH HOLES ARE LOCATED WITH A TRUE POSITION OF 0.004 [0.10]

8. ALL HOLE DIAMETERS ARE FINISHED HOLE SIZE

9. Ø0.098[2.41] THROUGH HOLES ARE UNPLATED.

10. Ø0.0453±0.0010 [1.151±0.025] DRILLED HOLES PLATED WITH 0.0003 [0.008] MIN SnPb OVER 0.001 [0.03] TO 0.003 [0.08] Cu PLATING TO ACHIEVE A Ø0.040±0.003 [1.02±0.07] HOLE.

mat'l code		NOTE 1		tolerances unless otherwise specified		CUSTOMER		 www.fciconnect.com	
lfr	ecn no.	dr	date	linear	.XX±.01/0.X±0.3	COPY		title 5P + 24S + 1M + 6P	
D				projection	.XXX±.005/0.XX±0.13			VERTICAL SOLDER HEADER	
				angles	.XXX±.0020/0.XXX±0.051			product family PWRBLADE code 213	
				dr	C. DAILY 03/08/01	INCH/MM		size dwg no	
				engr	E. TREECE 03/07/01	scale 1:1		A 51860 sheet 3	
				chr	E. TREECE 03/08/01				
				appd	E. TREECE 03/08/01				
sheet index	revision sheet								

A

B

1 | 2

3 |

4

1 | 2

Pro/E

3 |

coge code 22526

4