



Chipsmall Limited consists of a professional team with an average of over 10 year of expertise in the distribution of electronic components. Based in Hongkong, we have already established firm and mutual-benefit business relationships with customers from,Europe,America and south Asia,supplying obsolete and hard-to-find components to meet their specific needs.

With the principle of “Quality Parts,Customers Priority,Honest Operation,and Considerate Service”,our business mainly focus on the distribution of electronic components. Line cards we deal with include Microchip,ALPS,ROHM,Xilinx,Pulse,ON,Everlight and Freescale. Main products comprise IC,Modules,Potentiometer,IC Socket,Relay,Connector.Our parts cover such applications as commercial,industrial, and automotives areas.

We are looking forward to setting up business relationship with you and hope to provide you with the best service and solution. Let us make a better world for our industry!



Contact us

Tel: +86-755-8981 8866 Fax: +86-755-8427 6832

Email & Skype: info@chipsmall.com Web: www.chipsmall.com

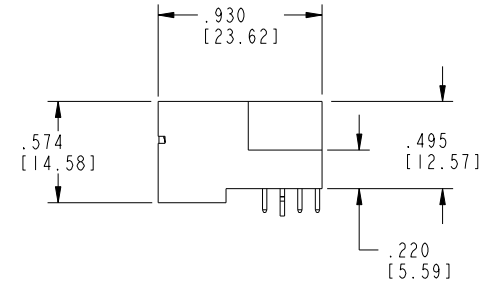
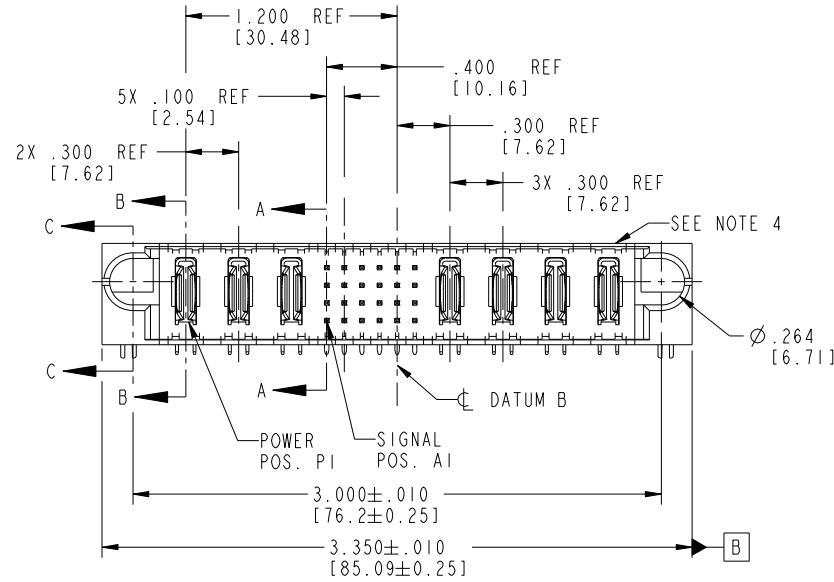
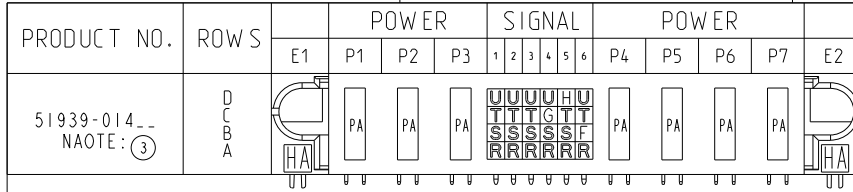
Address: A1208, Overseas Decoration Building, #122 Zhenhua RD., Futian, Shenzhen, China



Tous droits strictement réservés. Reproduction ou communication à des tiers interdite sous quelque forme que ce soit sans autorisation écrite du propriétaire. Propriété de c.FCI. Droits de reproduction FCI.



All rights strictly reserved. Reproduction or issue to third parties in any form whatsoever is not permitted without written authority from the proprietor. Property of FCI. Copyright FCI.



| CODE | DIM "M" MATING LENGTH | CONTACT TYPE |
|------|-----------------------|--------------|
| F | .220 [5.59] | SIGNAL |
| G | .220 [5.59] | SIGNAL |
| H | .220 [5.59] | SIGNAL |
| R | .270 [6.86] | SIGNAL |
| S | .270 [6.86] | SIGNAL |
| T | .270 [6.86] | SIGNAL |
| U | .270 [6.86] | SIGNAL |
| PA | N/A [N/A] | POWER |
| HA | N/A [N/A] | HOLD-DOWN |

| | | | | | | | | | | | |
|-----------------------|----------------|-----|----------|---------------------------------------|------------------------|-----------|--|-------------------------|--|---------------------|--|
| mat'l code SEE NOTE 2 | | | | tolerances unless otherwise specified | | CUSTOMER | | | | www.fciconnect.com | |
| ltr | ecn no. | dr | date | linear | .XX±.01/0.X±0.3 | COPY | | projection | | title 3P + 24S + 4P | |
| A | V20788 | JWS | 04-23-02 | angles | .XXX±.005/0.XX±0.13 | INCH/MM | | product family PwrBlade | | code 213 | |
| B | V21572 | CGD | 10/02/02 | | .XXX±.0020/0.XXX±0.051 | scale 1:1 | | size | | sheet 1 of 4 | |
| C | V03-0670 | MEM | 6/12/03 | | 0°±2° | | | dwg no | | 51939-014 | |
| D | DG05-0338 | SJ | 09/19/05 | dr | J. SHAFFER 04-23-02 | | | A | | cage code 22526 | |
| E | DG06-0008 | JMG | 01/07/06 | engr | M. MOSTOLLER 04-23-02 | | | | | | |
| F | DG08-0273 | WD | 12/22/08 | chr | M. MOSTOLLER 04-23-02 | | | | | | |
| | | | | appd | M. MOSTOLLER 04-23-02 | | | | | | |
| sheet index | revision sheet | F 1 | F 2 | F 3 | F 4 | | | | | | |

1 | 2

Pro/E

3 |

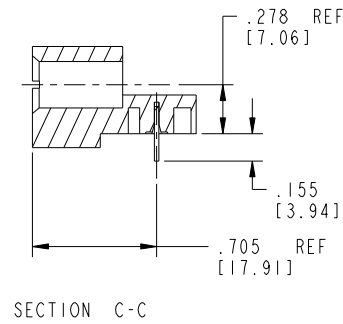
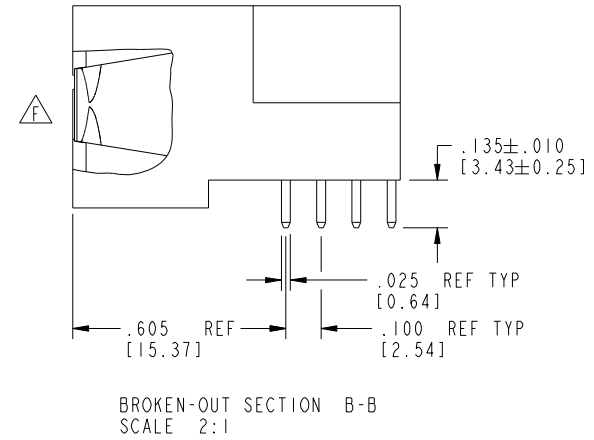
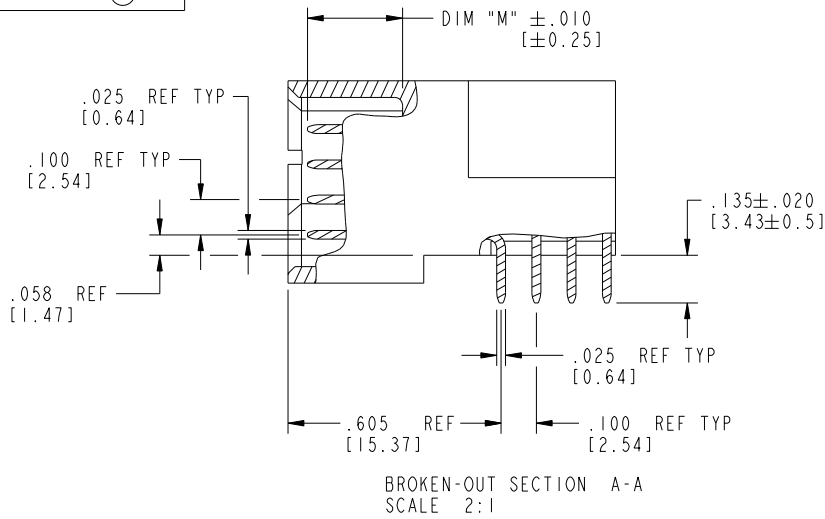
cage code 22526

4

Tous droits strictement réservés. Reproduction ou communication à des tiers interdite sous quelque forme que ce soit sans autorisation écrite du propriétaire. Propriété de c.FCI. Droits de reproduction FCI.

All rights strictly reserved. Reproduction or issue to third parties in any form whatsoever is not permitted without written authority from the proprietor. Property of FCI. Copyright FCI.

PRODUCT NUMBER
51939-014__
NOTE: ③



| | | | | | | | | | | | |
|-------------|----------------|------------|------|---------------------------------------|------------------------|------------|--|---------------------------|--|--------------------|--------|
| mat'l code | | SEE NOTE 2 | | tolerances unless otherwise specified | | CUSTOMER | | FCI | | www.fciconnect.com | |
| ltr | ecn no. | dr | date | linear | .XX±.01/0.X±0.3 | COPY | | title | | | |
| F | | | | | .XXX±.005/0.XX±0.13 | projection | | 3P + 24S + 4P | | | |
| | | | | angles | .XXX±.0020/0.XXX±0.051 | | | RIGHT ANGLE SOLDER HEADER | | | |
| | | | | dr | J. SHAFFER 04-23-02 | | | product family | | PwrBlade | code |
| | | | | enrg | M. MOSTOLLER 04-23-02 | scale | | size | | dwg no | 213 |
| | | | | chr | M. MOSTOLLER 04-23-02 | 1:1 | | A | | 51939-014 | sheet |
| | | | | appd | M. MOSTOLLER 04-23-02 | | | | | | 2 of 4 |
| sheet index | revision sheet | | | | | | | | | | |

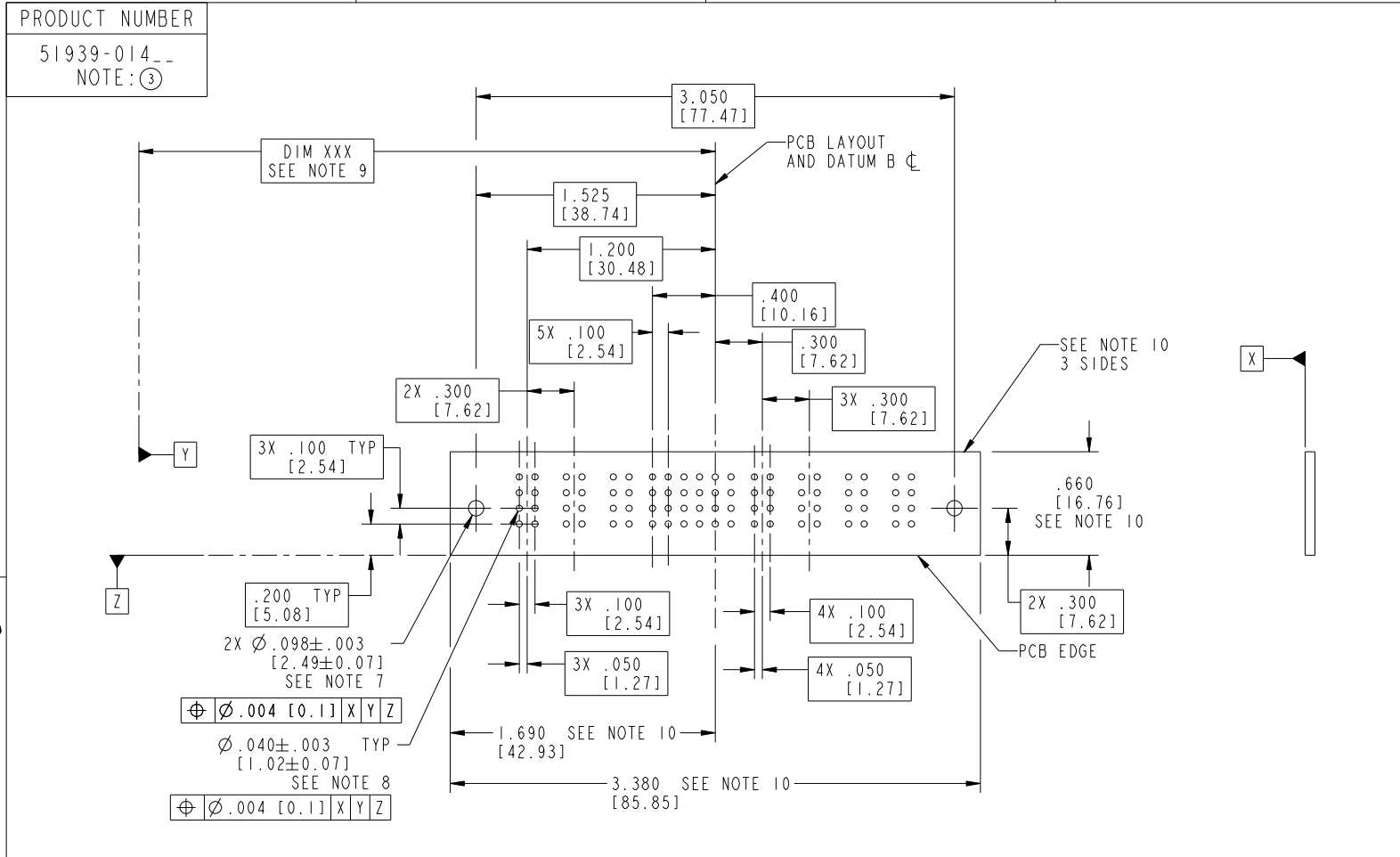
cage code 22526

Pro/E

Tous droits strictement reserves. Reproduction ou communication a des tiers interdite sous quelque forme que ce soit sans autorisation écrite du propriétaire. Propriete de c FCI. Droits de reproduction FCI.



All rights strictly reserved. Reproduction or issue to third parties in any form whatsoever is not permitted without written authority from the proprietor. Property of FCI. Copyright FCI.



RECOMMENDED PCB LAYOUT

| | | | | | | | | | |
|-------------|----------------|------------|------|---------------------------------------|-----------------------|------------|--|---------------------------|--|
| mat'l code | | SEE NOTE 2 | | tolerances unless otherwise specified | | CUSTOMER | | www.fciconnect.com | |
| ltr | ecn no. | dr | date | linear | .XX±.01/0.X±0.3 | COPY | | title | |
| F | | | | | .XXX±.005/0.XX±0.13 | projection | | 3P + 24S + 4P | |
| | | | | angles | .XXX±.002/0.XXX±0.051 | | | RIGHT ANGLE SOLDER HEADER | |
| | | | | dr | 0°±2° | INCH/MM | | product family | |
| | | | | enrg | J. SHAFFER 04-23-02 | scale | | PwrBlade | |
| | | | | chr | M. MOSTOLLER 04-23-02 | 1:1 | | code | |
| | | | | appd | M. MOSTOLLER 04-23-02 | A | | 213 | |
| sheet index | revision sheet | | | | | size | | sheet | |
| | | | | | | dwg no | | 3 of 4 | |
| | | | | | | 51939-014 | | | |

cage code 22526

Tous droits strictement reserves. Reproduction ou communication a des tiers interdite sous quelque forme que ce soit sans autorisation écrite du propriétaire. Propriete de c FCI. Droits de reproduction FCI.



All rights strictly reserved. Reproduction or issue to third parties in any form whatsoever is not permitted without written authority from the proprietor. Property of FCI. Copyright FCI.

PRODUCT NUMBER
51939-014__
NOTE: ③

NOTES:

1. DIMENSIONS AND TOLERANCES ARE IN ACCORDANCE WITH ASME Y14.5M, 1994 UNLESS OTHERWISE SPECIFIED.

CONNECTOR NOTES:

2. HOUSING MATERIAL: UL 94 V-0 GLASS FILLED HIGH-TEMP THERMOPLASTIC
POWER CONTACT MATERIAL: COPPER ALLOY
SIGNAL PIN MATERIAL: COPPER ALLOY

△ 3. SEE ITEM 1 & 2 IN PRINT 10064183 FOR PLATING SPEC OF 51939-014 AND 51939-014LF RESPECTIVELY.

4. MANUFACTURER'S NAME, P/N, AND DATE CODE TO APPEAR ON THIS SURFACE.

5. PRODUCT SPECIFICATION GS-12-149.
APPLICATION SPECIFICATION BUS-20-067.

PCB NOTES:

6. ALL HOLE DIAMETERS ARE FINISHED HOLE SIZE.

7. MOUNTING HOLES, WHERE APPLICABLE, ARE UNPLATED.

8. $\varnothing .0453 \pm 0.0010$ [1.151 \pm 0.025] DRILLED HOLES PLATED WITH 0.0003 [0.008] MIN SnPb OVER .001 [0.03] TO .003 [0.08] Cu PLATING TO ACHIEVE $\varnothing .040 \pm .003$ [1.02 \pm .07] HOLE.

9. "DIM XXX" TO BE DETERMINED BY THE CUSTOMER.

10. CONNECTOR KEEP-OUT ZONE.

11. A △ SYMBOL WILL BE NEXT TO ANY DIMENSION, VIEW, OR NOTE WHICH HAS BEEN MODIFIED WITH THE CURRENT DRAWING REVISION.

| | | | | | | | | | | | |
|-------------|---------|----------------|------|---------------------------------------|-----------------------|----------|--|---------------------------|--|--------------------|--|
| mat'l code | | SEE NOTE 2 | | tolerances unless otherwise specified | | CUSTOMER | | FCI | | www.fciconnect.com | |
| ltr | ecn no. | dr | date | linear | .XX±.01/0.X±0.3 | COPY | | projection | | | |
| F | | | | | .XXX±.005/0.XX±0.13 | INCH/MM | | title 3P + 24S + 4P | | | |
| | | | | angles | .XXX±.002/0.XXX±0.051 | 1:1 | | RIGHT ANGLE SOLDER HEADER | | | |
| | | | | dr | 0°+2° | scale | | product family PwrBlade | | code 213 | |
| | | | | enrg | J. SHAFFER 04-23-02 | A | | size | | sheet 4 of 4 | |
| | | | | chr | M. MOSTOLLER 04-23-02 | A | | dwg no | | 51939-014 | |
| | | | | appd | M. MOSTOLLER 04-23-02 | A | | sheet | | 4 of 4 | |
| sheet index | | revision sheet | | | | | | | | | |

cage code 22526