



Chipsmall Limited consists of a professional team with an average of over 10 year of expertise in the distribution of electronic components. Based in Hongkong, we have already established firm and mutual-benefit business relationships with customers from,Europe,America and south Asia,supplying obsolete and hard-to-find components to meet their specific needs.

With the principle of “Quality Parts,Customers Priority,Honest Operation,and Considerate Service”,our business mainly focus on the distribution of electronic components. Line cards we deal with include Microchip,ALPS,ROHM,Xilinx,Pulse,ON,Everlight and Freescale. Main products comprise IC,Modules,Potentiometer,IC Socket,Relay,Connector.Our parts cover such applications as commercial,industrial, and automotives areas.

We are looking forward to setting up business relationship with you and hope to provide you with the best service and solution. Let us make a better world for our industry!



Contact us

Tel: +86-755-8981 8866 Fax: +86-755-8427 6832

Email & Skype: info@chipsmall.com Web: www.chipsmall.com

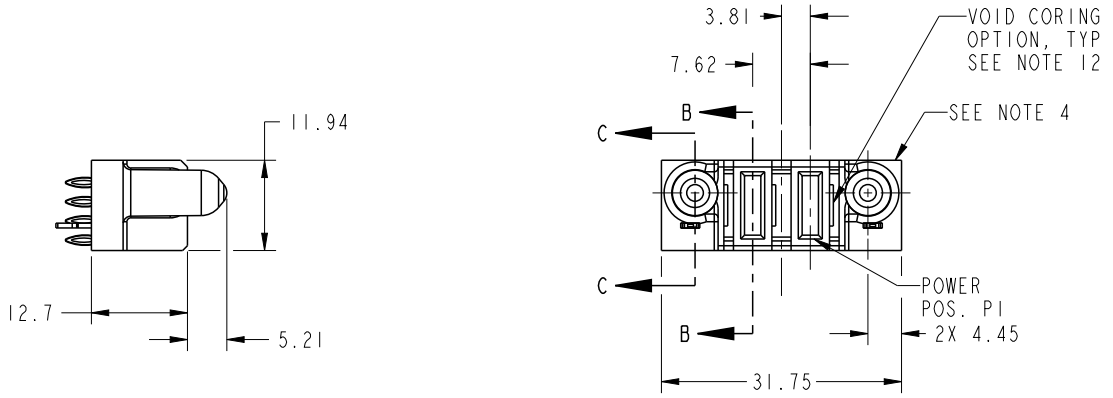
Address: A1208, Overseas Decoration Building, #122 Zhenhua RD., Futian, Shenzhen, China



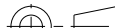
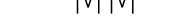




Copyright FCI.

PRODUCT NO.	POWER			
	E2	P2	P1	E1
51940-557-- NOTE: 3		PC	PC	



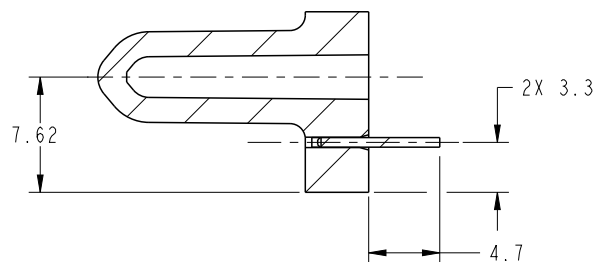
CODE	DIM "M" MATING LENGTH	CONTACT TYPE
PC	[1.07]	POWER
HA	[N/A]	HOLD-DOWN

spec ref		SEE NOTES		dr	Luo Weller	2014/11/02	projection 	MM 	size	A4	scale	1:1	
tolerance std		TOLERANCES UNLESS OTHERWISE SPECIFIED		eng	Luo Weller	2014/11/17			ecn no	-			
SEE NOTES				chr	-	-							
				appr	Pei-Ming Zheng	2014/11/14	product family		PwrBlade		rel level		Released
surface 		linear	0.X	±0.50		title	2ACP VERTICAL PF RECEIPT		dwg no	51940-557		rev	A
			0.XX	±0.25									
			0.XXX	±0.10									
SEE NOTES		angular	0°	±2°	www.fci.com	cat. no.	Product - Customer Drw				sheet 1 of 4		

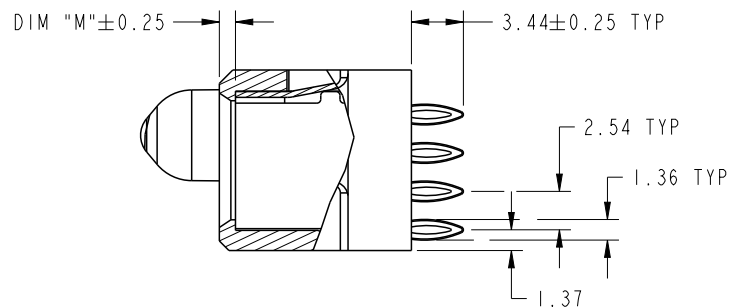
PrintE File - REV C - 2009-06-09

PRODUCT NUMBER

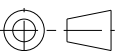


51940-557--
NOTE: 3



SECTION C-C
SCALE 2:1

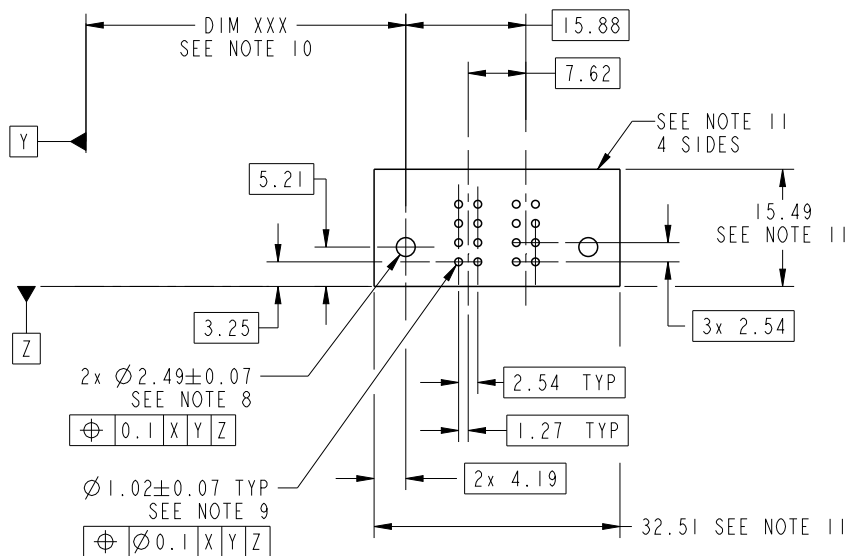


SECTION B-B
SCALE 2:1

dr	Luo Weller	2014/11/02	<div>projection</div> <div></div>	<div>MM</div> <div></div>	size	A4	scale	1:1	
eng	Luo Weller	2014/11/17			ecn no				-
chr	-	-							
appr	Pei-Ming Zheng	2014/11/14	product family		PwrBlade		rel level	Released	
		title			2ACP		dwg no		rev
					VERTICAL PF RECEPT		51940-557		A
www.fci.com		cat. no.		Product - Customer Drw				sheet 2 of 4	

PRODUCT NUMBER

51940-557--
NOTE: 3



RECOMMENDED PCB LAYOUT

dr	Luo Weller	2014/11/02	<div>projection</div> <div></div>	<div>MM</div> <div></div>	size	A4	scale	1:1			
eng	Luo Weller	2014/11/17			ecn no	-	rel level	Released			
chr	-	-									
appr	Pei-Ming Zheng	2014/11/14	product family		PwrBlade						
<div></div>			title			2ACP		dwg no	51940-557	rev	A
			VERTICAL PF RECEPT								
www.fci.com			cat. no.			Product - Customer Drw			sheet 3 of 4		



Copyright FCI.

PRODUCT NUMBER
51940-557--
NOTE: 3

NOTES:

1. DIMENSIONS AND TOLERANCES ARE IN ACCORDANCE WITH
ASME Y14.5M, 1994 UNLESS OTHERWISE SPECIFIED.

CONNECTOR NOTES:

- 2 HOUSING MATERIAL: UL 94 V-0 GLASS FILLED HIGH-TEMP THERMOPLASTIC
POWER CONTACT MATERIAL: COPPER ALLOY
SIGNAL PIN MATERIAL: COPPER ALLOY
- 3. SEE ITEM 7 & 8 IN PRINT 10064183 FOR PLATING SPEC OF 51940-557 AND 51940-557LF RESPECTIVELY.
- 4 MANUFACTURER'S NAME, P/N, AND DATE CODE TO APPEAR ON THIS SURFACE.
- 5. PRODUCT SPECIFICATION GS-12-149.
APPLICATION SPECIFICATION BUS-20-067.
- 6. PACKAGED IN TRAYS.
- PCB NOTES:
- 7. ALL HOLE DIAMETERS ARE FINISHED HOLE SIZE.
- 8 MOUNTING HOLES, WHERE APPLICABLE, ARE UNPLATED.
- 9 $\varnothing 1.151 \pm 0.025$ DRILLED HOLES PLATED WITH
0.008 MIN SnPb OR Sn OVER 0.03
TO 0.08 Cu PLATING TO ACHIEVE
 $\varnothing 1.02 \pm 0.07$ HOLE.
- 10 "DIM XXX" TO BE DETERMINED BY THE CUSTOMER.
- 11 CONNECTOR KEEP-OUT ZONE.
- 12. THE VOID CORING IN BETWEEN POWER MODULES, SIGNAL MODULES AND END MODULES ARE
OPTIONAL AND THE SHAPE MAY BE DIFFERENT FOR OPTIMIZE THE MOLDING PROCESS. THE VOID
CORING WILL NOT EFFECT TO PRODUCT FUNCTION.

dr	Luo Weller	2014/11/02	<div>projection</div> <div></div>	<div>MM</div> <div></div>	size	A4	scale	1:1			
eng	Luo Weller	2014/11/17			ecn no -						
chr	-	-									
appr	Pei-Ming Zheng	2014/11/14	product family		PwrBlade	rel level			Released		
<div></div>	title				2ACP		dwg no		51940-557	rev	A
VERTICAL PF RECEPT											
www.fci.com		cat. no.		Product - Customer Drw				sheet 4 of 4			