



Chipsmall Limited consists of a professional team with an average of over 10 year of expertise in the distribution of electronic components. Based in Hongkong, we have already established firm and mutual-benefit business relationships with customers from,Europe,America and south Asia,supplying obsolete and hard-to-find components to meet their specific needs.

With the principle of “Quality Parts,Customers Priority,Honest Operation,and Considerate Service”,our business mainly focus on the distribution of electronic components. Line cards we deal with include Microchip,ALPS,ROHM,Xilinx,Pulse,ON,Everlight and Freescale. Main products comprise IC,Modules,Potentiometer,IC Socket,Relay,Connector.Our parts cover such applications as commercial,industrial, and automotives areas.

We are looking forward to setting up business relationship with you and hope to provide you with the best service and solution. Let us make a better world for our industry!



Contact us

Tel: +86-755-8981 8866 Fax: +86-755-8427 6832

Email & Skype: info@chipsmall.com Web: www.chipsmall.com

Address: A1208, Overseas Decoration Building, #122 Zhenhua RD., Futian, Shenzhen, China

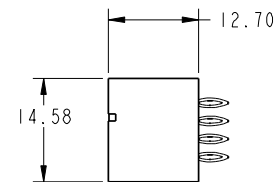
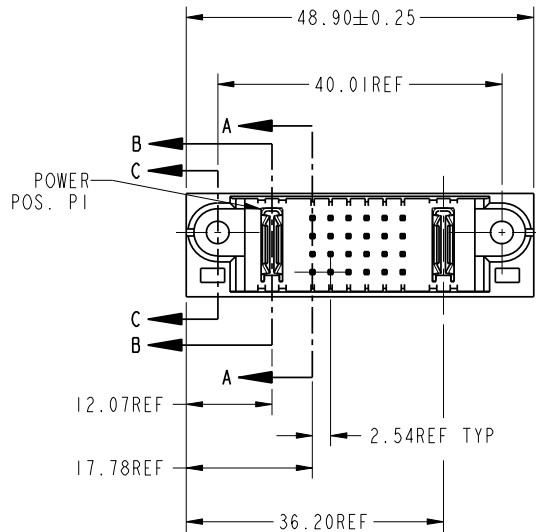
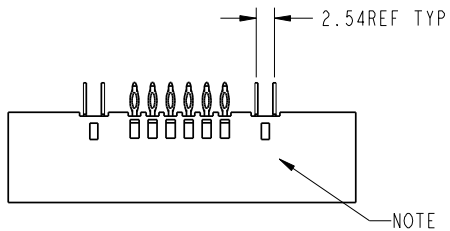


Tous droits strictement reserves. Reproduction ou communication a des tiers interdite sous quelque forme que ce soit sans autorisation écrite du propriétaire. Propriete de c FCI. Droits de reproduction FCI.



All rights strictly reserved. Reproduction or issue to third parties in any form whatever is not permitted without written authority from the proprietor. Property of FCI. Copyright FCI.

PRODUCT No.	ROWS	POWER		SIGNAL						POWER			
		E1	P1	1	2	3	4	5	6	P2	E2		
51952-002-- NOTE: 3	D C B A			G	G	G	G	G	G	G	G		



CODE	DIM "M" ±.010 [0.25]	CONTACT TYPE
G	[6.86]	SIGNAL
K	[5.59]	SIGNAL
PC	[N/A]	POWER

mat'l code				SEE NOTE		tolerances unless otherwise specified		CUSTOMER		FCI www.fciconnect.com	
lir	ecn no.	dr	date	linear	0.X ±0.3	COPY		projection		title	
A	V12513	DA1	10/31/01		0.XX ±0.13					1P + 24S + 1P PRESS FIT VERTICAL HEADER	
B	V21104	TBA	10/01/02	angles	0.XXX ±0.051					product family	
C	DG05-0472	Ryan	11/17/05	dr	0° ±2°	J. WITMER 9/19/01		MM		PwrBlade	
D	DG07-0357	JULIA	09/10/07	enrg		J. ALLISON 9/19/01		scale		code	
				chr		J. ALLISON 9/19/01		1:1		213	
				appd		J. ALLISON 9/19/01				sheet	
sheet index	revision	D	D							1 of 3	
	sheet	I	I								

cage code 22526

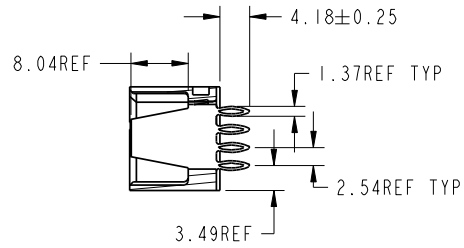
Pro/E

Tous droits strictement reserves. Reproduction ou communication a des tiers interdite sous quelque forme que ce soit sans autorisation ecrite du proprietaire. Propriete de c FCI. Droits de reproduction FCI.

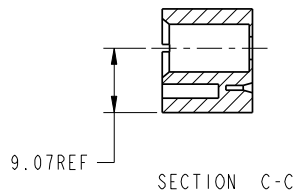


All rights strictly reserved. Reproduction or issue to third parties in any form whatever is not permitted without written authority from the proprietor. Property of FCI. Copyright FCI.

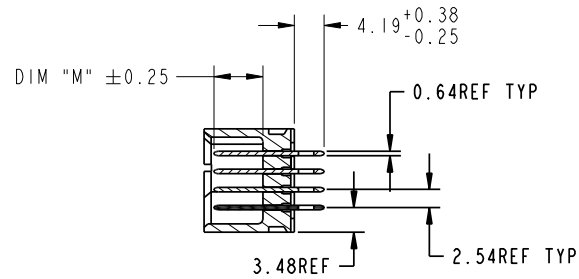
PRODUCT NUMBER
51952-002--
NOTE: 3



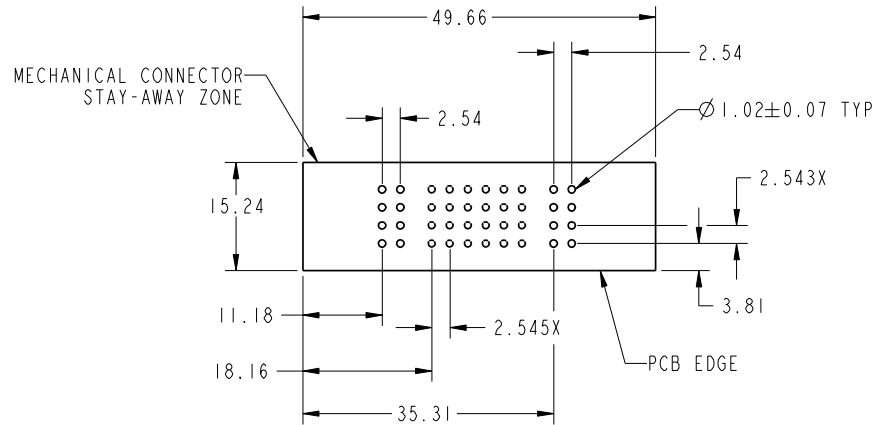
SECTION B-B



SECTION C-C



SECTION A-A



RECOMMENDED PCB LAYOUT

mat'l code				SEE NOTE		tolerances unless otherwise specified		CUSTOMER		www.fciconnect.com	
lfr	ecr no.	dr	date	linear	0.X ±0.3	projection		COPY		title	
D				angles	0.XX ±0.13					IP + 24S + IP	
				dr	0.XXX ±0.051					PRESS FIT VERTICAL HEADER	
				enr	J. WITMER 9/19/01	MM		product family		PwrBlade	code
				chr	J. ALLISON 9/19/01	1:1		size		dwg no	213
				appd	J. ALLISON 9/19/01			A		51952-002	sheet
sheet index	revision sheet										2

cage code 22526

Pro/E

Tous droits strictement reserves. Reproduction ou communication a des tiers interdite sous quelque forme que ce soit sans autorisation ecrite du proprietaire. Propriete de c FCI. Droits de reproduction FCI.



All rights strictly reserved. Reproduction or issue to third parties in any form whatever is not permitted without written authority from the proprietor. Property of FCI. Copyright FCI.

PRODUCT NUMBER
51952-002--
NOTE: 3

NOTES:

1. DIMENSIONS AND TOLERANCES ARE IN ACCORDANCE WITH ASME Y14.5M, 1994 UNLESS OTHERWISE SPECIFIED.

CONNECTOR NOTES:

- 2 HOUSING MATERIAL: UL 94 V-0 GLASS FILLED
HIGH-TEMP THERMOPLASTIC
POWER CONTACT MATERIAL: COPPER ALLOY
SIGNAL PIN MATERIAL: COPPER ALLOY
 - 3. PLATING:
51952-002 ,51952-002LF PLATING SPEC. WAS SHOWN IN THE PRINT OF 10064183.
 - 4 MANUFACTURER'S NAME, P/N, AND DATE CODE TO APPEAR ON THIS SURFACE.
 - 5. PRODUCT SPECIFICATION GS-12-149.
APPLICATION SPECIFICATION BUS-20-067.
 - 6. PACKAGED IN TRAYS.
- PCB NOTES:
- 7. ALL HOLE DIAMETERS ARE FINISHED HOLE SIZE.
 - 8. MOUNTING HOLES, WHERE APPLICABLE, ARE UNPLATED.
 - 9 $\varnothing 1.151 \pm 0.025$ DRILLED HOLES PLATED WITH
0.008 MIN SnPb OR Sn OVER .001 [0.03]
TO 0.08 Cu PLATING TO ACHIEVE
 $\varnothing 1.02 \pm .07$ HOLE.
 - 10 "DIM XXX" TO BE DETERMINED BY THE CUSTOMER.
 - 11 CONNECTOR KEEP-OUT ZONE.
 - 12. FOR PRESS FIT APPLICATION USE FCI CAM TOOL 430169-XXX.

mat'l code				SEE NOTE		tolerances unless otherwise specified		CUSTOMER		FCI www.fciconnect.com	
lfr	ecr no.	dr	date	linear	0.X ± 0.3	COPY		projection		title	
D					0.XX ± 0.13					1P + 24S + 1P PRESS FIT VERTICAL HEADER	
				angles	0° ± 2°					product family PwrBlade code 213	
				dr	J. WITMER 9/19/01			scale		size A	
				enrg	J. ALLISON 9/19/01			1:1		dwg no 51952-002 sheet 3	
				chr	J. ALLISON 9/19/01						
				appd	J. ALLISON 9/19/01						
sheet index		revision sheet									

cage code 22526

Pro/E