



Chipsmall Limited consists of a professional team with an average of over 10 year of expertise in the distribution of electronic components. Based in Hongkong, we have already established firm and mutual-benefit business relationships with customers from,Europe,America and south Asia,supplying obsolete and hard-to-find components to meet their specific needs.

With the principle of “Quality Parts,Customers Priority,Honest Operation,and Considerate Service”,our business mainly focus on the distribution of electronic components. Line cards we deal with include Microchip,ALPS,ROHM,Xilinx,Pulse,ON,Everlight and Freescale. Main products comprise IC,Modules,Potentiometer,IC Socket,Relay,Connector.Our parts cover such applications as commercial,industrial, and automotives areas.

We are looking forward to setting up business relationship with you and hope to provide you with the best service and solution. Let us make a better world for our industry!



Contact us

Tel: +86-755-8981 8866 Fax: +86-755-8427 6832


Email & Skype: info@chipsmall.com Web: www.chipsmall.com

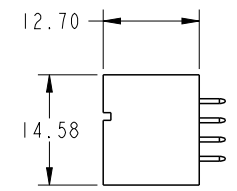
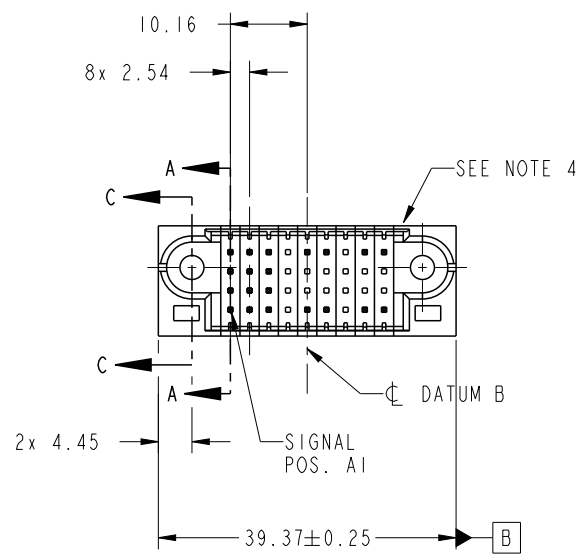
Address: A1208, Overseas Decoration Building, #122 Zhenhua RD., Futian, Shenzhen, China





Copyright FCI.

PRODUCT NO.	ROWS	SIGNAL										
		E1	1	2	3	4	5	6	7	8	9	E2
51952-252-- NOTE③	D C B A		E	E	X	E	E	X	E	E	E	E
			E	E	X	X	X	X	X	X	X	E
			E	E	X	X	X	X	X	X	X	E
			E	E	X	E	E	X	E	E	E	E



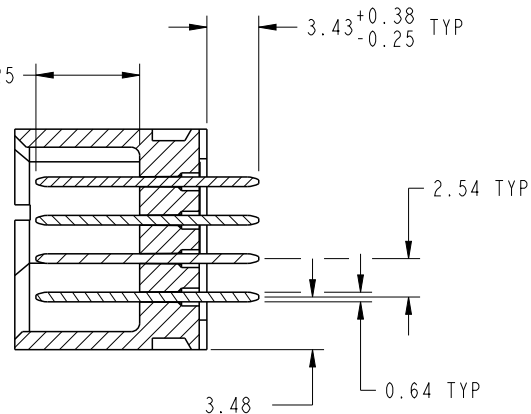
CODE	DIM "M" MATING LENGTH	CONTACT TYPE
E	[6.86]	SIGNAL
X	OMITTED	

spec ref		See Notes		dr	Jackie Huang	2013/07/29	<div>projection</div> <div></div>	<div>MM</div> <div></div>	size	A4	scale	1:1			
tolerance std		TOLERANCES UNLESS OTHERWISE SPECIFIED				ecn no				-					
See Notes						chr				-					
						appr				Pei-Ming Zheng	2013/07/31	product family		PwrBlade	rel level
surface	<div>✓</div>	linear	0.X	±0.50	<div></div>	title	36S		dwg no	51952-252				rev	A
			0.XX	±0.25											
			0.XXX	±0.10											
	angular	0°	±2°	www.fci.com											

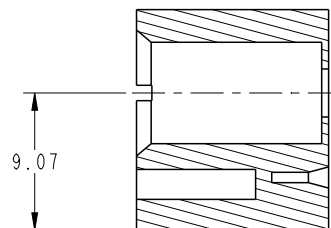
PRODUCT NUMBER

51952-252--
NOTE 3

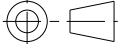


DIM "M" ± 0.25



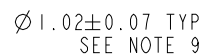
SECTION A-A
SCALE 2:1




SECTION C-C
SCALE 2:1

dr	Jackie Huang	2013/07/29	<div>projection</div> <div></div>	<div>MM</div> <div></div>	size	A4	scale	1:1
eng	Jackie Huang	2013/07/31			ecn no	-		
chr	-	-			rel level	Released		
appr	Pei-Ming Zheng	2013/07/31	product family		PwrBlade			
	title				36S	dwg no	51952-252	rev
	www.fci.com	cat. no.		&model_name	Product - Customer Drw			sheet 2 of 4
						A		

51952-252--
NOTE 3



	$\varnothing 0.10$	X	Y	Z
---	--------------------	---	---	---

Pro/E File - REV C - 2009-06-09



Copyright FCI.

PRODUCT NUMBER
51952-252--
NOTE 3

NOTES:

1. DIMENSIONS AND TOLERANCES ARE IN ACCORDANCE WITH
ASME Y14.5M, 1994 UNLESS OTHERWISE SPECIFIED.

CONNECTOR NOTES:

- 2 HOUSING MATERIAL: UL 94 V-0 GLASS FILLED HIGH-TEMP THERMOPLASTIC
POWER CONTACT MATERIAL: COPPER ALLOY
SIGNAL PIN MATERIAL: COPPER ALLOY
 - 3. SEE ITEM 1 & 2 IN PRINT 10064183 FOR PLATING SPEC OF 51952-252 AND 51952-252LF RESPECTIVELY.
 - 4 MANUFACTURER'S NAME, DATE CODE AND OPTIONAL P/N TO APPEAR ON
THIS SURFACE. THE MARK CAN BE OMITTED IF THERE IS NOT ENOUGH
SPACE ON THIS SURFACE.
 - 5. PRODUCT SPECIFICATION GS-12-149.
APPLICATION SPECIFICATION BUS-20-067.
 - 6. PACKAGED IN TRAYS.
- PCB NOTES:
- 7. ALL HOLE DIAMETERS ARE FINISHED HOLE SIZE.
 - 8. MOUNTING HOLES, WHERE APPLICABLE, ARE UNPLATED.

- 9 $\varnothing 1.151 \pm 0.025$ DRILLED HOLES PLATED WITH
0.008 MIN SnPb OR Sn OVER .001 [0.03]
TO 0.08 Cu PLATING TO ACHIEVE
 $\varnothing 1.02 \pm 0.07$ HOLE.
- 10 CONNECTOR KEEP-OUT ZONE.

dr	Jackie Huang	2013/07/29	<div>projection</div> <div></div>	<div>MM</div> <div></div>	size	A4	scale	1:1	
eng	Jackie Huang	2013/07/31			ecn no -				
chr	-	-							
appr	Pei-Ming Zheng	2013/07/31	product family		PwrBlade		rel level		Released
<div></div>	title				dwg no		rev		
	36S				51952-252		A		
		VERTICAL STB HEADER							
www.fci.com		cat. no.		&model_name		Product - Customer Drw		sheet 4 of 4	