



Chipsmall Limited consists of a professional team with an average of over 10 year of expertise in the distribution of electronic components. Based in Hongkong, we have already established firm and mutual-benefit business relationships with customers from,Europe,America and south Asia,supplying obsolete and hard-to-find components to meet their specific needs.

With the principle of “Quality Parts,Customers Priority,Honest Operation,and Considerate Service”,our business mainly focus on the distribution of electronic components. Line cards we deal with include Microchip,ALPS,ROHM,Xilinx,Pulse,ON,Everlight and Freescale. Main products comprise IC,Modules,Potentiometer,IC Socket,Relay,Connector.Our parts cover such applications as commercial,industrial, and automotives areas.

We are looking forward to setting up business relationship with you and hope to provide you with the best service and solution. Let us make a better world for our industry!



## Contact us

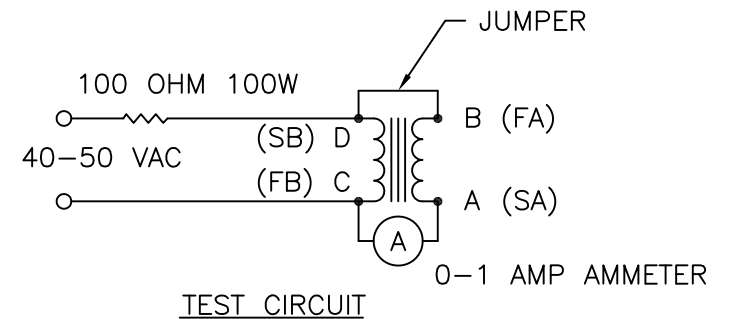
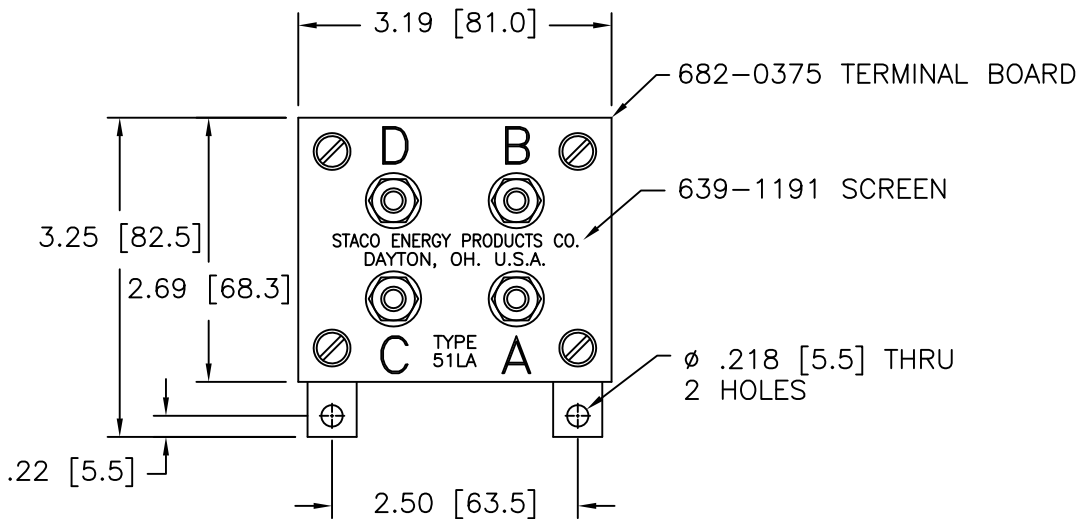
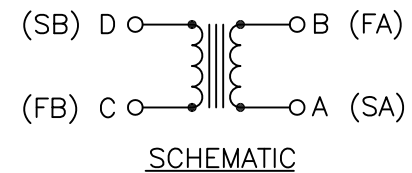
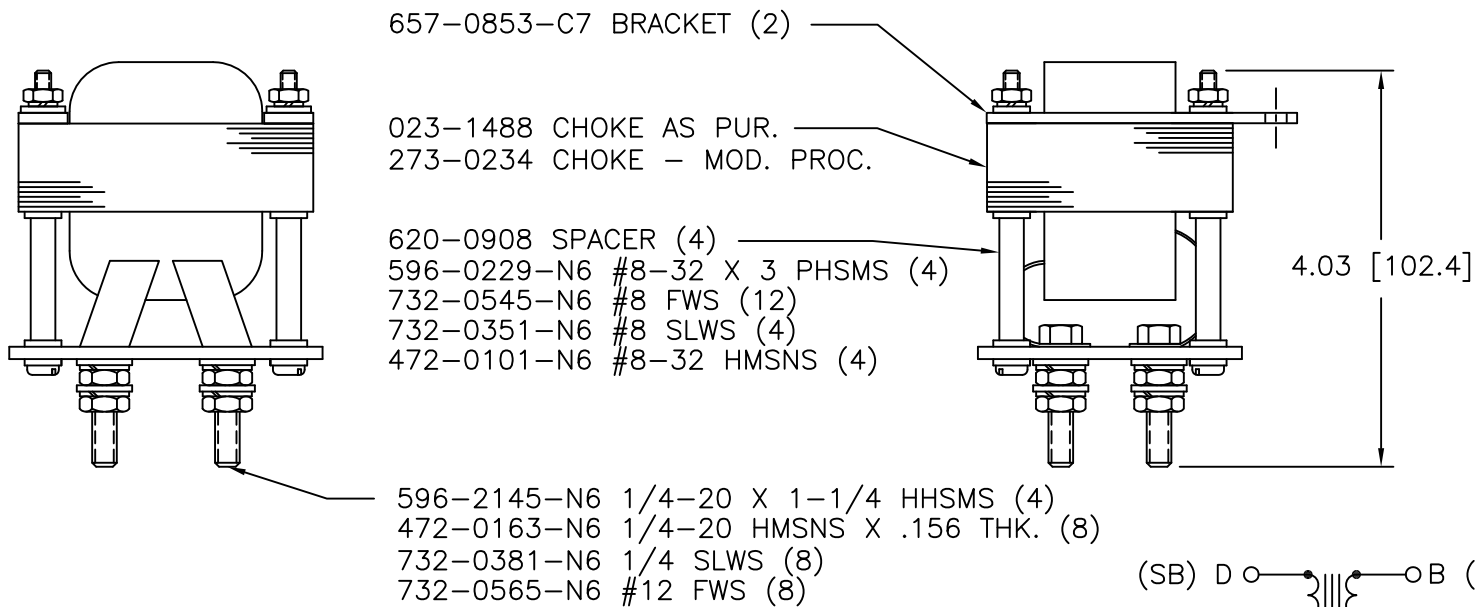
Tel: +86-755-8981 8866 Fax: +86-755-8427 6832

Email & Skype: info@chipsmall.com Web: www.chipsmall.com

Address: A1208, Overseas Decoration Building, #122 Zhenhua RD., Futian, Shenzhen, China



DWG. NO.	850-0178		
DWG. SIZE	C		
REVISIONS			
SYL.	E.C.N.	DATE	APVD.
R	24803	4/10/02	REDRAWN TO CAD
S	24950	9/12/02	REVISED & UPDATED



READ APPROX. 0.2 AMPERES BETWEEN "C" AND "A" IF THE START AND FINISH OF EITHER WINDING IS REVERSED THE AMMETER WILL READ ZERO

**NOTE:**  
THE UNIT SHALL WITHSTAND A 1500 V ±5% 60HZ. APPLICATION FROM EACH WINDING TO THE CORE AND BETWEEN WINDINGS WITHOUT EVIDENCE OF FLASHOVER OR BREAKDOWN

UNLESS OTHERWISE SPECIFIED, TOLERANCE IS ±		UNITS		TITLE:				
DECIMALS	HOLES	ANGLES	DRAFT	SPEC. CONTROL DRAWING				
.XX	.0005	1°	1-1/2°	CHOKE		A Components Corporation of America Company 302 Gaddis Boulevard Dayton, Ohio 45402 USA		
MATERIAL:				DRAWN BY		DATE	FIRST USED ON	DO NOT SCALE DWG.
ALL DIMENSIONS APPLY AFTER PLATING				TIM RAU		4/10/02		
The information and design disclosed herein was originated by and is the property of STACO ENERGY PRODUCTS CO., which reserves all patent, proprietary, design, manufacturing, reproduction, use and sole rights thereto, and to any article disclosed therein except to the extent rights are expressly granted to others. The foregoing does not apply to vendor proprietary parts.				CHECKER		DATE	WEIGHT APPROX.	CAGE CODE
								83008
				ENGINEER		DATE	SCALE	DWG. SIZE
							1=1	C
							SHEET 1 OF 1	DWG. NO.
								850-0178