



Chipsmall Limited consists of a professional team with an average of over 10 year of expertise in the distribution of electronic components. Based in Hongkong, we have already established firm and mutual-benefit business relationships with customers from,Europe,America and south Asia,supplying obsolete and hard-to-find components to meet their specific needs.

With the principle of “Quality Parts,Customers Priority,Honest Operation,and Considerate Service”,our business mainly focus on the distribution of electronic components. Line cards we deal with include Microchip,ALPS,ROHM,Xilinx,Pulse,ON,Everlight and Freescale. Main products comprise IC,Modules,Potentiometer,IC Socket,Relay,Connector.Our parts cover such applications as commercial,industrial, and automotives areas.

We are looking forward to setting up business relationship with you and hope to provide you with the best service and solution. Let us make a better world for our industry!



Contact us

Tel: +86-755-8981 8866 Fax: +86-755-8427 6832

Email & Skype: info@chipsmall.com Web: www.chipsmall.com

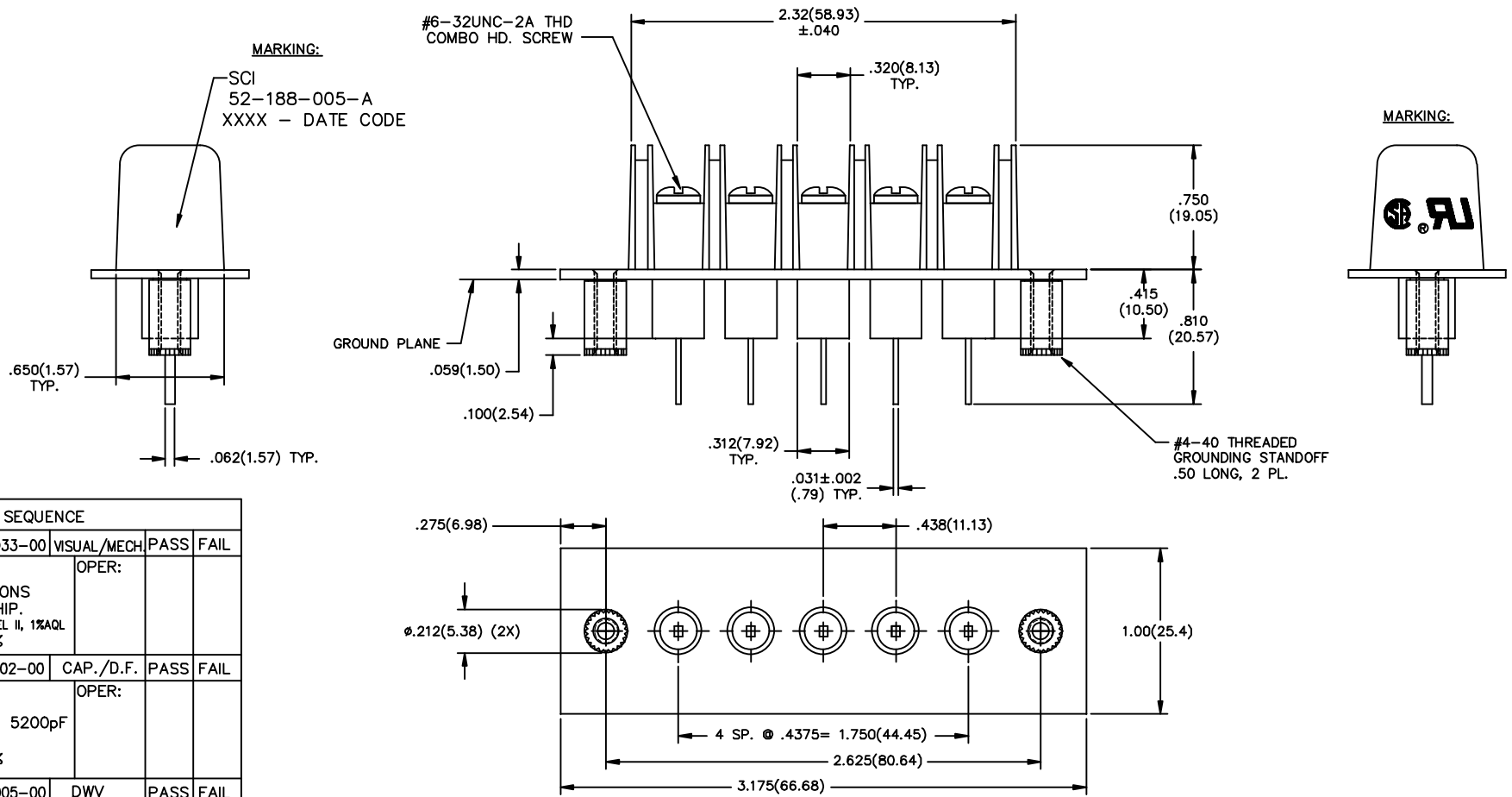
Address: A1208, Overseas Decoration Building, #122 Zhenhua RD., Futian, Shenzhen, China




NOTES:

- 1) VOLTAGE: 100 VDC.
- 2) CURRENT: 20 AMPS.
- 3) OPERATING TEMPERATURE: -55°C TO +105°C.
- 4) MATERIAL: BLACK THERMOPLASTIC OR EQUIV.
- 5) SCREW TYPE: #6-32 COMBO HD./ZINC PLATED.
- 6) MARKING: 4 PT. CHARACTERS, WHITE INK.
- 7) D.C.RESISTANCE: 0.01 OHMS MAX.
- 8) SHIPPING TRAY MARKING:

SCI 52-188-005-A DATE CODE
 100V, 20A, 12-22AWG
 UL & CSA LOGOS



TEST SEQUENCE				
STEP 0400	94-4033-00	VISUAL/MECH	PASS	FAIL
PER IT 38-0468 INSPECT DIMENSIONS AND WORKMANSHIP. PER MIL-STD-105, LEVEL II, 1% AQL COMMENTS: 100%		OPER:		
STEP 0100	94-1002-00	CAP./D.F.	PASS	FAIL
PER IT 38-0245 CAP: 2500pF TO 5200pF DF: <4% MAX COMMENTS: 100%		OPER:		
STEP 0200	94-2005-00	DWV	PASS	FAIL
PER IT 38-0245 DWV: 2000 VDC 25°C 1 MINUTE MINIMUM COMMENTS: 100%		OPER:		
STEP 0300	94-2015-00	I.R.	PASS	FAIL
PER IT 38-0245 IR: 100VDC, 1000 Mohms MIN. 2 MINUTES MAX. COMMENTS: 100%		OPER:		

										11	REV. NO.	UNLESS OTHERWISE SPECIFIED DIMENSIONS ARE IN INCHES. (MILLIMETERS) DO NOT SCALE.	TOLERANCES UNLESS OTHERWISE SPECIFIED Fractions ± 1/64 Dec. .xxx ± .03 Dec. .xxx ± .020 Angles ± 0° 30'	 SPECTRUM CONTROL INC. ERIE, FAIRVIEW PENNSYLVANIA	
										CN 200758	REV. NOTICE	UNLESS OTHERWISE SPECIFIED DIMENSIONS ARE IN INCHES. (MILLIMETERS) DO NOT SCALE.	CODE IDENT. NO. OLSP2		Dwn. KAUFFMAN Date 3-8-01 Aprd _____ Sheet 1 of 1