



Chipsmall Limited consists of a professional team with an average of over 10 year of expertise in the distribution of electronic components. Based in Hongkong, we have already established firm and mutual-benefit business relationships with customers from,Europe,America and south Asia,supplying obsolete and hard-to-find components to meet their specific needs.

With the principle of “Quality Parts,Customers Priority,Honest Operation,and Considerate Service”,our business mainly focus on the distribution of electronic components. Line cards we deal with include Microchip,ALPS,ROHM,Xilinx,Pulse,ON,Everlight and Freescale. Main products comprise IC,Modules,Potentiometer,IC Socket,Relay,Connector.Our parts cover such applications as commercial,industrial, and automotives areas.

We are looking forward to setting up business relationship with you and hope to provide you with the best service and solution. Let us make a better world for our industry!



## Contact us

Tel: +86-755-8981 8866 Fax: +86-755-8427 6832

Email & Skype: info@chipsmall.com Web: www.chipsmall.com

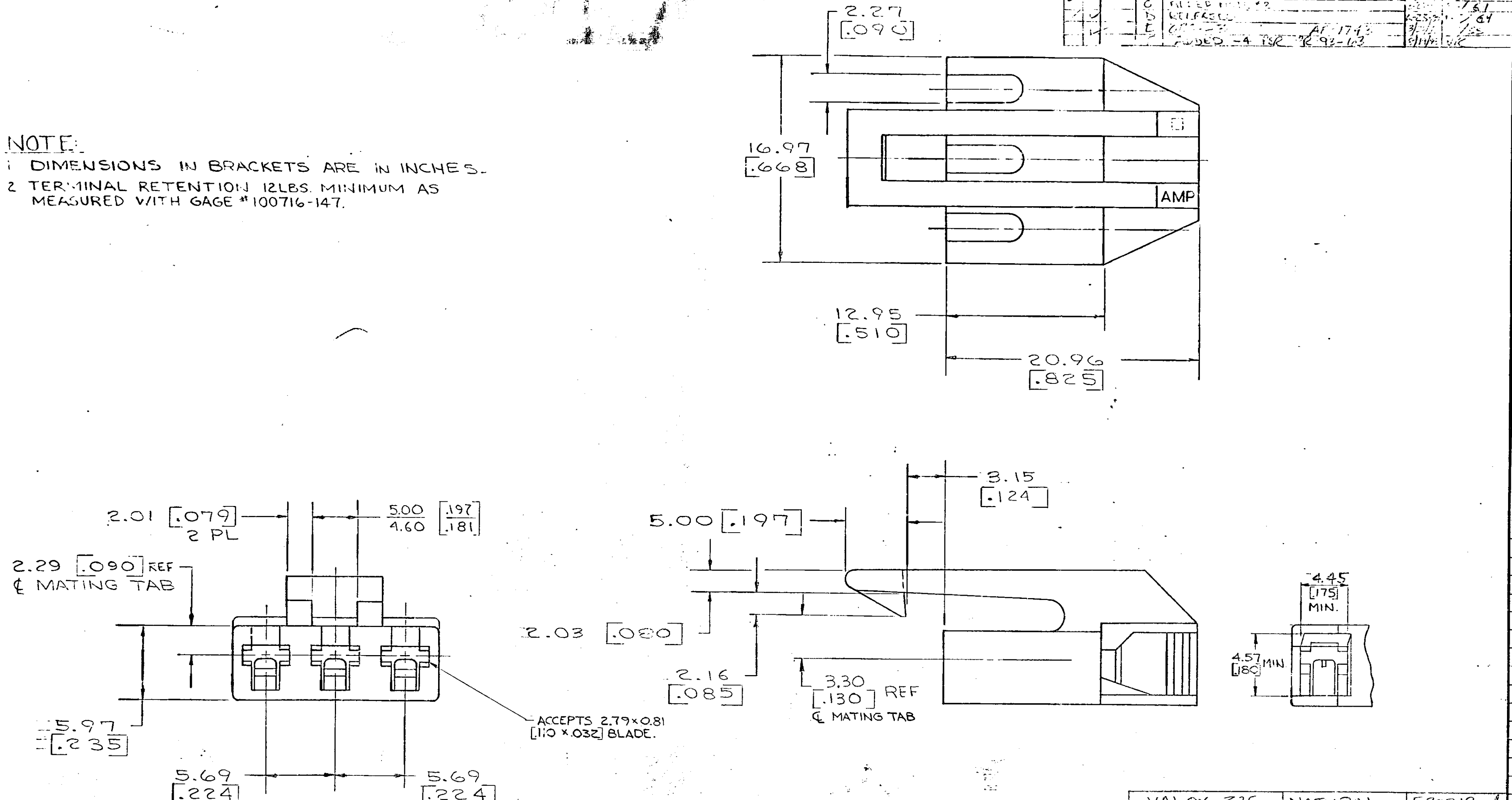
Address: A1208, Overseas Decoration Building, #122 Zhenhua RD., Futian, Shenzhen, China



© COPYRIGHT 1977 BY AMP INCORPORATED, HARRISBURG, PA. ALL INTERNATIONAL RIGHTS RESERVED. AMP INCORPORATED PRODUCTS COVERED BY U. S. AND FOREIGN PATENTS AND/OR PATENTS PENDING.

REVISONS		DESCRIPTION	DATE	APPROVED
P	F	ZONE	LTR	
		A		REVISED PER A-47
		B		REVISED PER A-46
		C		REVISED PER A-42
		D		REVISED PER A-41
		E		REVISED PER A-40
				REVISED PER A-39
				REVISED PER A-38
				REVISED PER A-37
				REVISED PER A-36
				REVISED PER A-35
				REVISED PER A-34
				REVISED PER A-33
				REVISED PER A-32
				REVISED PER A-31
				REVISED PER A-30
				REVISED PER A-29
				REVISED PER A-28
				REVISED PER A-27
				REVISED PER A-26
				REVISED PER A-25
				REVISED PER A-24
				REVISED PER A-23
				REVISED PER A-22
				REVISED PER A-21
				REVISED PER A-20
				REVISED PER A-19
				REVISED PER A-18
				REVISED PER A-17
				REVISED PER A-16
				REVISED PER A-15
				REVISED PER A-14
				REVISED PER A-13
				REVISED PER A-12
				REVISED PER A-11
				REVISED PER A-10
				REVISED PER A-9
				REVISED PER A-8
				REVISED PER A-7
				REVISED PER A-6
				REVISED PER A-5
				REVISED PER A-4
				REVISED PER A-3
				REVISED PER A-2
				REVISED PER A-1

**NOTE:**  
 1 DIMENSIONS IN BRACKETS ARE IN INCHES.  
 2 TERMINAL RETENTION 12LBS. MINIMUM AS MEASURED WITH GAGE #100716-147.



MATERIAL	COLOR	PART NO
VALOX 325	NATURAL	520219-4
6/6 NYLON	YELLOW	520219-3
	BLACK	520219-2
	NATURAL	520219-1

UNLESS OTHERWISE SPECIFIED DIMENSIONS ARE IN INCHES. mm	CONTRACT NO	AMP INCORPORATED Harrisburg, Pa.	
	TOLERANCES ON: DECIMALS ±0.38 [.015] ANGLES ±	DR D. J. Davis 9-26-79	NAME
MATERIAL	CHK G. J. Miller 4-27-79	"110" SERIES FASTON RECEPTACLE HOUSING 3 CIRCUIT	
SEE TABLE	APPD V. K. K... 11-1-79	SIZE	CODE IDENT NO
FINISH	APPD A. C. ... 10/1/79	C	00779
	DSGN APPD	DRAWING NO	
	OTHER APPD	520219	
		SCALE	SHEET 1 OF 2

**METRIC**

DRAWING MADE IN THIRD ANGLE PROJECTION

3

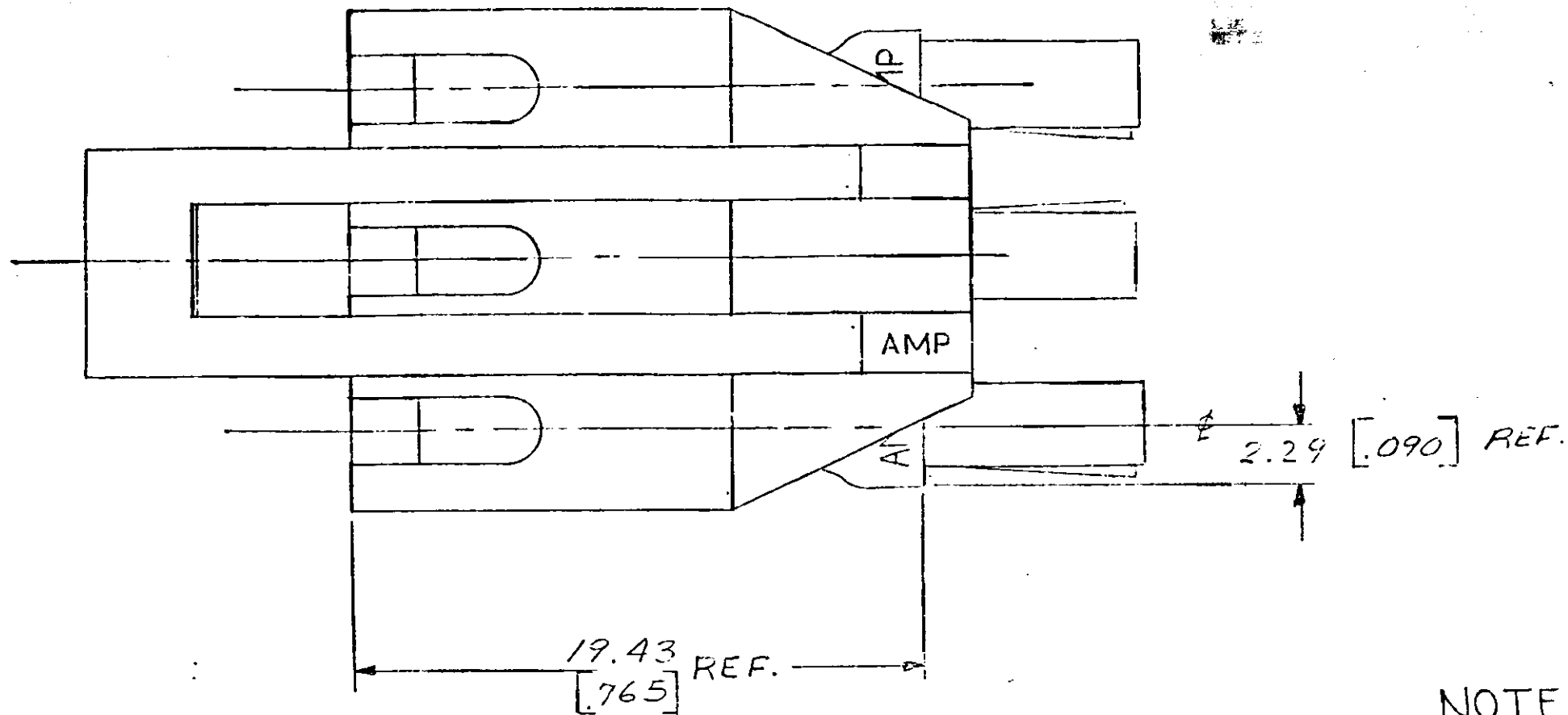
2

1

LOC 1/50  
DIST 50

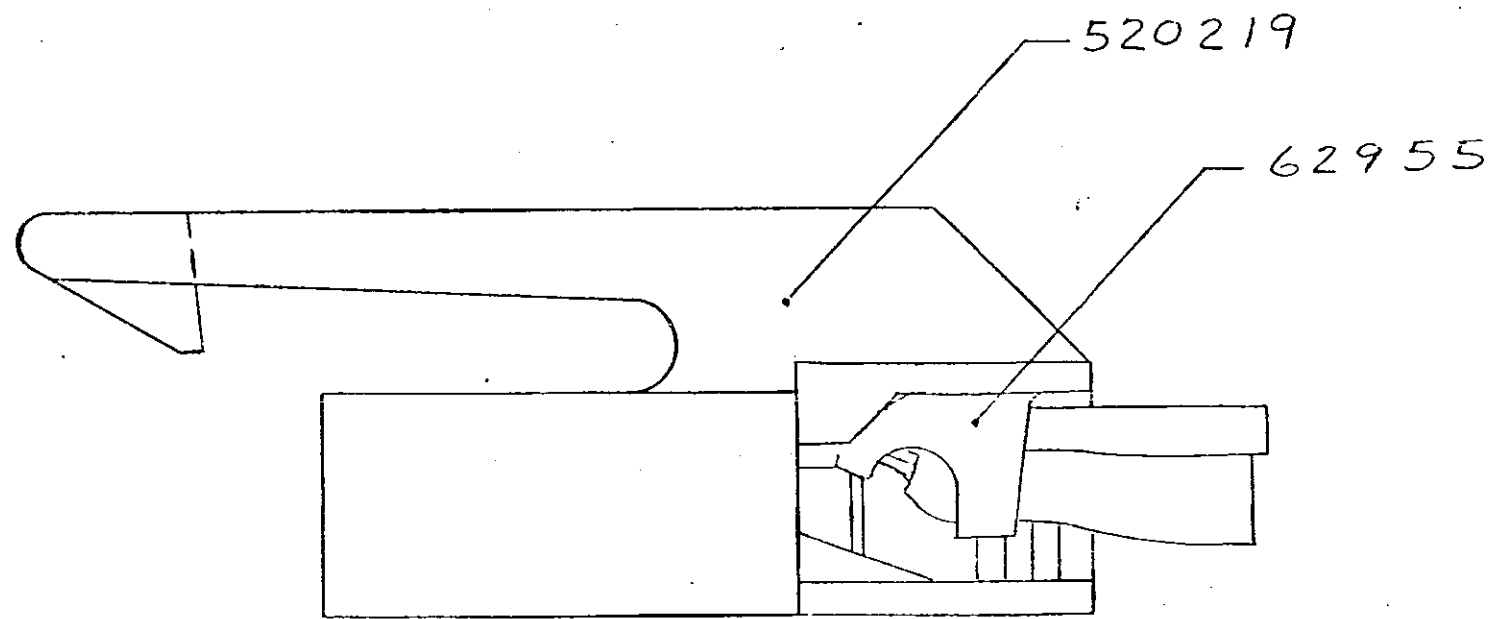
© COPYRIGHT 1977 BY AMP INCORPORATED, HARRISBURG, PA.  
ALL INTERNATIONAL RIGHTS RESERVED. AMP INCORPORATED PRODUCTS  
COVERED BY U. S. AND FOREIGN PATENTS AND/OR PATENTS PENDING.

REVISIONS						
P	F	ZONE	TR	DESCRIPTION	DATE	APPROVED
/			A	REVISED 1-27	11-21-77	[Signature]
/			E	REVISED AS 460	3-28-79	[Signature]
/			C	FILED NOTE # 2	5-23-79	[Signature]
/			D	RELEASED	6-22-79	[Signature]
/			L	CHG - 2 A1-1193	11-28-79	[Signature]
/			F	ADDED - 4 PER FIG. 93-62	12-21-79	[Signature]



**NOTE:**

- 1. TERMINAL RETENTION 12 LBS. MINIMUM AS MEASURED WITH GAGE # 100716-147.



UNLESS OTHERWISE SPECIFIED DIMENSIONS ARE IN INCHES. TOLERANCES ON: DECIMALS ± # ANGLES ± #		CONTRACT NO DR <i>Walden</i> 9-26-79 CHK <i>Gotta</i> 9-27-79 APPD <i>William Karlovsky</i> 10/1/79 APPD <i>B.W. Williams</i> 10/1/79 DSGN APPD OTHER APPD		PART NO	
MATERIAL ---		NAME 110 SERIES FASTON HOUSING REFERENCE ASS'Y W/62955		AMP INCORPORATED Harrisburg, Pa.	
FINISH ---		SIZE CODE IDENT NO DRAWING NO C 00779 520219		SHEET 2 OF 2	

**METRIC**

CUSTOMER DRAWING

520219