



Chipsmall Limited consists of a professional team with an average of over 10 year of expertise in the distribution of electronic components. Based in Hongkong, we have already established firm and mutual-benefit business relationships with customers from,Europe,America and south Asia,supplying obsolete and hard-to-find components to meet their specific needs.

With the principle of "Quality Parts,Customers Priority,Honest Operation,and Considerate Service",our business mainly focus on the distribution of electronic components. Line cards we deal with include Microchip,ALPS,ROHM,Xilinx,Pulse,ON,Everlight and Freescale. Main products comprise IC,Modules,Potentiometer,IC Socket,Relay,Connector.Our parts cover such applications as commercial,industrial, and automotives areas.

We are looking forward to setting up business relationship with you and hope to provide you with the best service and solution. Let us make a better world for our industry!



Contact us

Tel: +86-755-8981 8866 Fax: +86-755-8427 6832

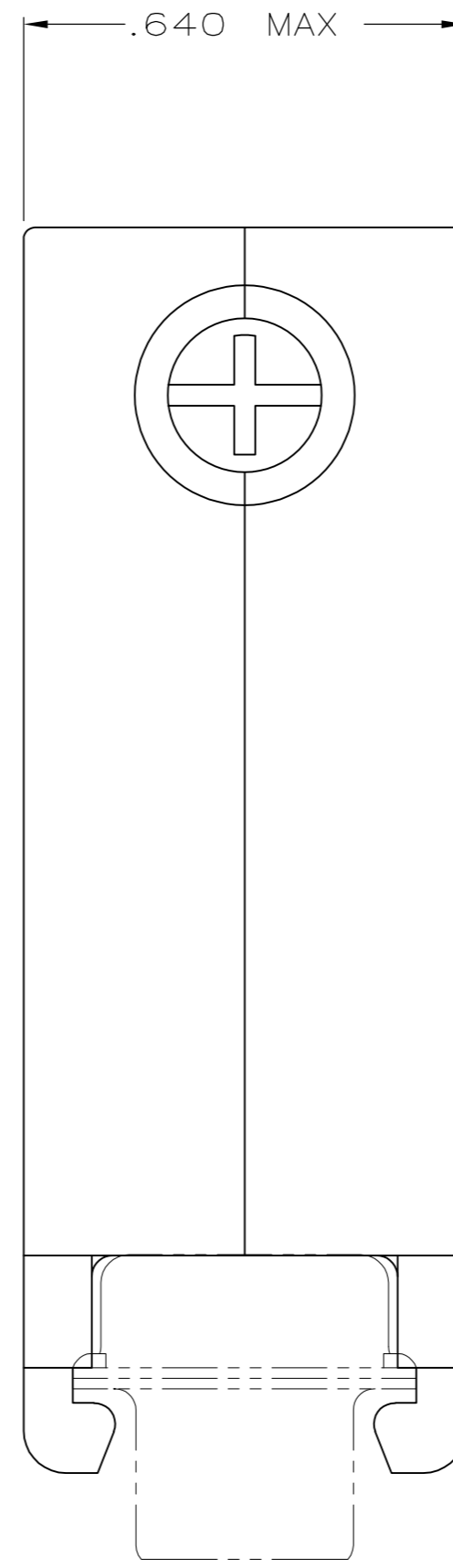
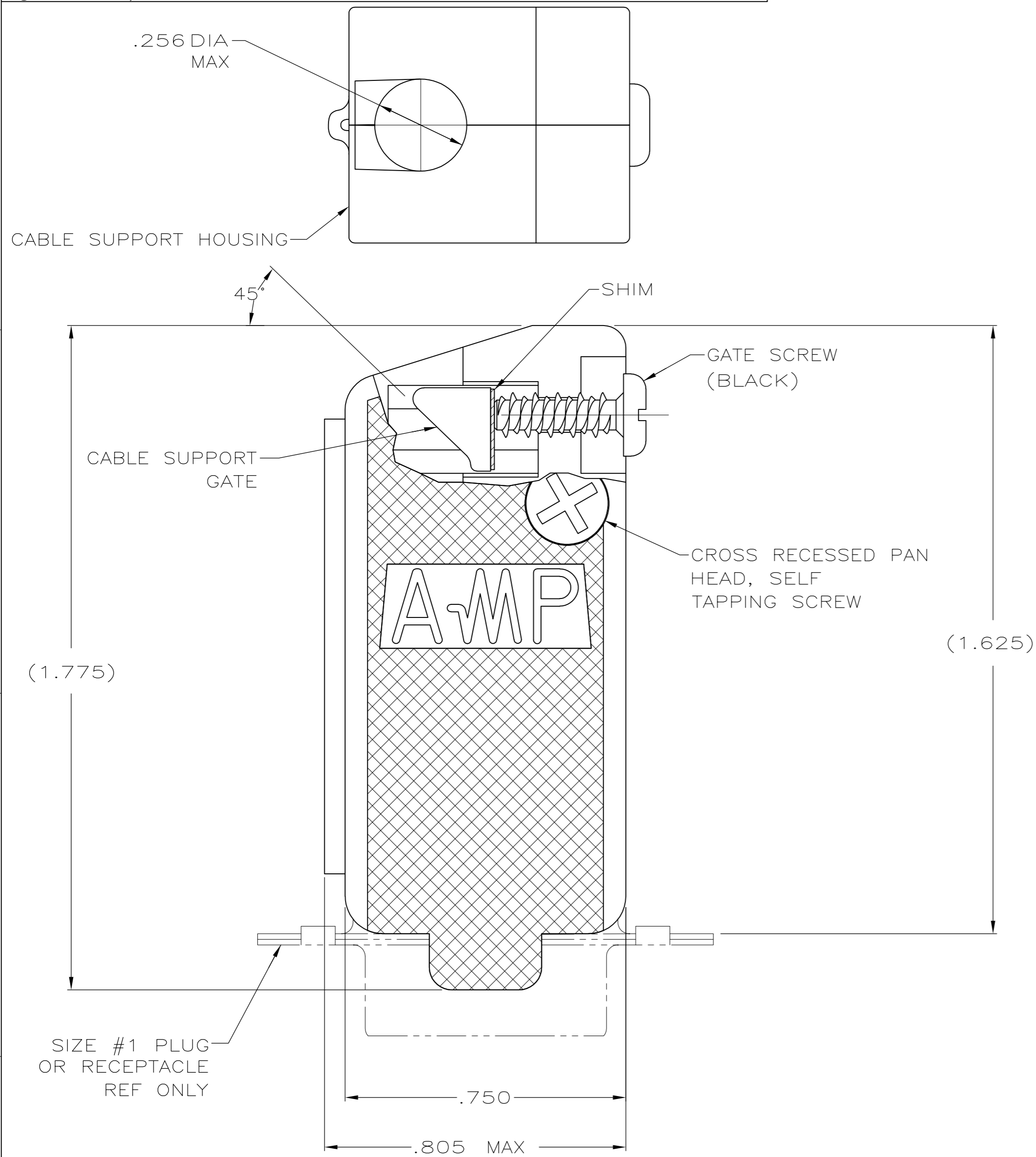
Email & Skype: info@chipsmall.com Web: www.chipsmall.com

Address: A1208, Overseas Decoration Building, #122 Zhenhua RD., Futian, Shenzhen, China



THIS DRAWING IS UNPUBLISHED. RELEASED FOR PUBLICATION
 © COPYRIGHT 2006 By - ALL RIGHTS RESERVED.

| LOC | DIST | REVISIONS | | | | | |
|-----|------|-----------|-----|---------------------------|---------|-----|------|
| GP | 00 | P | LTR | DESCRIPTION | DATE | DWN | APVD |
| | | P | | REVISED PER ECO-11-004835 | 11MAR11 | RK | HMR |



- 1. PARTS PACKAGED UNASSEMBLED.
- 2 COMPONENTS INDIVIDUALLY BULK PACKED & SHIPPED AS A UNIT PACKAGE KIT.
- 3 MOLDED PARTS: POLYPROPYLENE, BLACK
SHIM: BRASS
SCREWS: COLD ROLLED STEEL
- 4 GATE SCREWS: BLACK ZINC PHOSPHATE,
SELF-TAPPING SCREWS: ZINC PLATED CLEAR CHROMATE COATING.

| | | |
|-------------------|-----------|-------------|
| COMBINATION DRIVE | 2 | 5205729-3 |
| COMBINATION DRIVE | AS SHOWN | 5205729-1 |
| SCREW VERSION | PACKAGING | PART NUMBER |

| | | | | | | | | | | | |
|--|---|--------------|----------|-------|--|-----------|--------|------------|-----------|---------------|---|
| THIS DRAWING IS A CONTROLLED DOCUMENT. | | DWN | 22AUG05 | | TE Connectivity | | | | | | |
| DIMENSIONS: INCHES | | CHK | 22AUG 05 | | NAME | | | | | | |
| TOLERANCES UNLESS OTHERWISE SPECIFIED: | | APVD | 22AUG05 | | M. WALMSLEY | | | | | | |
| 0 PLC ± - 1 PLC ± - 2 PLC ± - 3 PLC ± .005 4 PLC ± - ANGLES ± - | | PRODUCT SPEC | | | SELF TAPPED 45/180 DEG CABLE SUPPORT CLAMSHELL, SIZE 1 ASSEMBLY, AMPLIMITE HD-20 | | | | | | |
| MATERIAL | 3 | FINISH | 4 | SIZE | A2 | CAGE CODE | 00779 | DRAWING NO | C=5205729 | RESTRICTED TO | - |
| CUSTOMER DRAWING | | | | SCALE | 4:1 | SHEET | 1 of 1 | REV | P | | |