



Chipsmall Limited consists of a professional team with an average of over 10 year of expertise in the distribution of electronic components. Based in Hongkong, we have already established firm and mutual-benefit business relationships with customers from,Europe,America and south Asia,supplying obsolete and hard-to-find components to meet their specific needs.

With the principle of “Quality Parts,Customers Priority,Honest Operation,and Considerate Service”,our business mainly focus on the distribution of electronic components. Line cards we deal with include Microchip,ALPS,ROHM,Xilinx,Pulse,ON,Everlight and Freescale. Main products comprise IC,Modules,Potentiometer,IC Socket,Relay,Connector.Our parts cover such applications as commercial,industrial, and automotives areas.

We are looking forward to setting up business relationship with you and hope to provide you with the best service and solution. Let us make a better world for our industry!



## Contact us

Tel: +86-755-8981 8866 Fax: +86-755-8427 6832

Email & Skype: [info@chipsmall.com](mailto:info@chipsmall.com) Web: [www.chipsmall.com](http://www.chipsmall.com)

Address: A1208, Overseas Decoration Building, #122 Zhenhua RD., Futian, Shenzhen, China



4

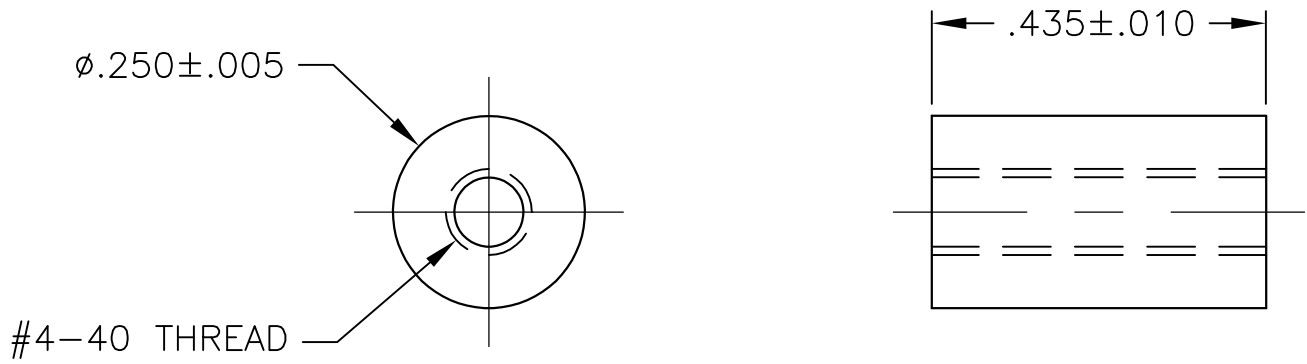
3

2


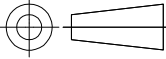
1

THIS DRAWING IS UNPUBLISHED.	RELEASED FOR PUBLICATION
© COPYRIGHT — By —	ALL RIGHTS RESERVED.

LOC	DIST	REVISIONS				
GP	00	P	LTR	DESCRIPTION	DATE	APVD
			B1	REVISED PER ECO-11-004835	11MAR11	RK HMR



BULK PACKAGED	2	5205933-4
ONE KIT PER BAG	2	5205933-3
PACKAGING	QTY	PART NUMBER

THIS DRAWING IS A CONTROLLED DOCUMENT.		DWN J.GERACE 27MAR06	 TE Connectivity			
		CHK C.ROHDE 27MAR06				
DIMENSIONS: INCHES		APVD M.WALMSLEY 27MAR06	NAME STAND OFF BUSHING, AMPLIMITE			
	0 PLC ± -	PRODUCT SPEC				
	1 PLC ± -	APPLICATION SPEC				
MATERIAL	2 PLC ± -	WEIGHT -	SIZE A3	CAGE CODE 00779	DRAWING NO C-5205933	RESTRICTED TO -
	3 PLC ± -	CUSTOMER DRAWING				
ROHS COMPLIANT ALUMINUM	4 PLC ± -					
	ANGLES ± -					
	FINISH -					
		SCALE 4:1		SHEET 1 OF 1		REV B1