



Chipsmall Limited consists of a professional team with an average of over 10 year of expertise in the distribution of electronic components. Based in Hongkong, we have already established firm and mutual-benefit business relationships with customers from,Europe,America and south Asia,supplying obsolete and hard-to-find components to meet their specific needs.

With the principle of “Quality Parts,Customers Priority,Honest Operation,and Considerate Service”,our business mainly focus on the distribution of electronic components. Line cards we deal with include Microchip,ALPS,ROHM,Xilinx,Pulse,ON,Everlight and Freescale. Main products comprise IC,Modules,Potentiometer,IC Socket,Relay,Connector.Our parts cover such applications as commercial,industrial, and automotives areas.

We are looking forward to setting up business relationship with you and hope to provide you with the best service and solution. Let us make a better world for our industry!



Contact us

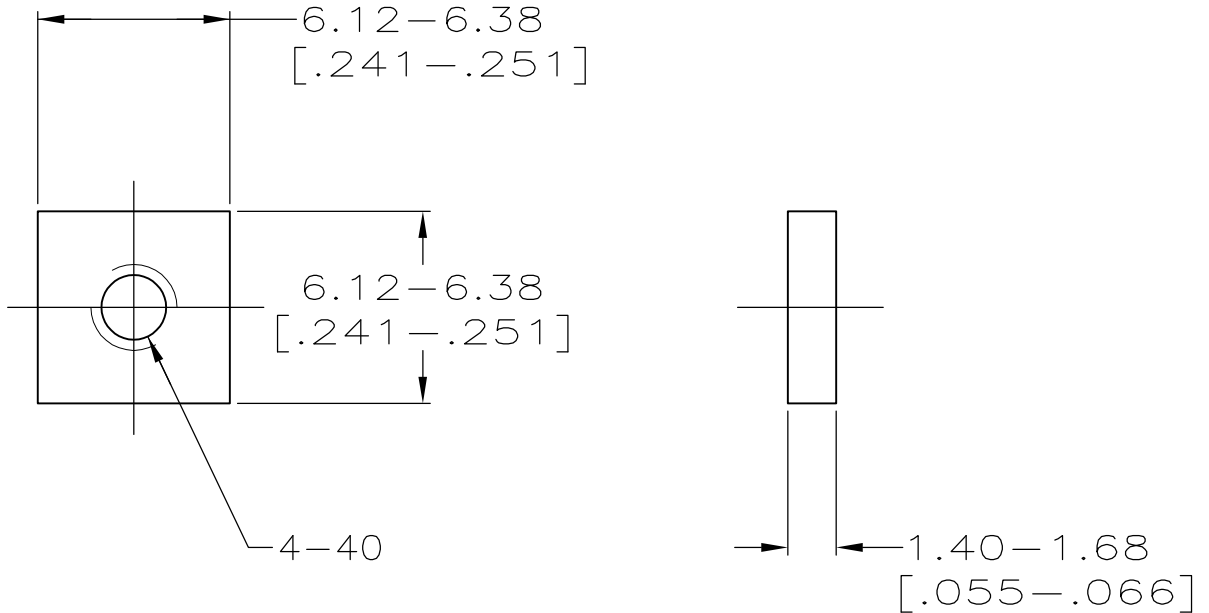
Tel: +86-755-8981 8866 Fax: +86-755-8427 6832

Email & Skype: info@chipsmall.com Web: www.chipsmall.com

Address: A1208, Overseas Decoration Building, #122 Zhenhua RD., Futian, Shenzhen, China



REVISIONS				
P	LTR	DESCRIPTION	DATE	APVD
	A	REVISED PER ECO-16-010410	29JUL2016	DG



- ① ZINC PLATED .000200-.000400 THICK, YELLOW CHROMATE COATING.
- ② ZINC PLATED .000200-.000400 THICK, CLEAR CHROMATE COATING.

②	5207954-5
①	5207954-2
FINISH	PART NO

THIS DRAWING IS UNPUBLISHED.

RELEASED FOR PUBLICATION ALL RIGHTS RESERVED. © COPYRIGHT - By -

DIMENSIONS: INCHES	DWN R.RICHARDSON	27JUN05	MATERIAL CARBON STEEL	FINISH SEE TABLE
	CHK C.ROHDE	27JUN05	TE Connectivity	
TOLERANCES UNLESS OTHERWISE SPECIFIED:	APVD M.WALMSLEY	27JUN05		
0 PLC ± -	PRODUCT SPEC	-	SIZE	CAGE CODE
1 PLC ± -	APPLICATION SPEC	-	A4	00779
2 PLC ± -			DRAWING NO	5207954
3 PLC ± -			RESTRICTED TO	-
4 PLC ± -				
ANGLES ± -				
	WEIGHT	0.000000	SCALE 4:1	
	CUSTOMER DRAWING		SHEET 1 OF 1	REV A