



Chipsmall Limited consists of a professional team with an average of over 10 year of expertise in the distribution of electronic components. Based in Hongkong, we have already established firm and mutual-benefit business relationships with customers from,Europe,America and south Asia,supplying obsolete and hard-to-find components to meet their specific needs.

With the principle of “Quality Parts,Customers Priority,Honest Operation,and Considerate Service”,our business mainly focus on the distribution of electronic components. Line cards we deal with include Microchip,ALPS,ROHM,Xilinx,Pulse,ON,Everlight and Freescale. Main products comprise IC,Modules,Potentiometer,IC Socket,Relay,Connector.Our parts cover such applications as commercial,industrial, and automotives areas.

We are looking forward to setting up business relationship with you and hope to provide you with the best service and solution. Let us make a better world for our industry!



Contact us

Tel: +86-755-8981 8866 Fax: +86-755-8427 6832

Email & Skype: info@chipsmall.com Web: www.chipsmall.com

Address: A1208, Overseas Decoration Building, #122 Zhenhua RD., Futian, Shenzhen, China



THIS DRAWING IS UNPUBLISHED.

RELEASED FOR PUBLICATION

ALL RIGHTS RESERVED.

LOC CE DIST 00

REVISIONS

P	LTR	DESCRIPTION	DATE	DWN	APVD
B		ECR-11-018563	29SEP2011	BB	SM

NOTE :

- 1. CONNECTOR KEYING CONFORMS TO ANSI X3T9.5/84-48.
- 2. LED IS 'ON' WHEN IN INSERTED STATE.
- 3. THIS PRODUCT HAS NOT COMPLETED VALIDATION TESTING.
- 4. OBSOLETE PARTS: OBSOLETE CIS STREAMLINING PER D.RENAUD/D.SINISI

SPECIFICATIONS :

SWITCH LEGEND

PI = PRIMARY IN PTx = PRIMARY TRANSMIT
 SO = SECONDARY OUT STx = SECONDARY TRANSMIT
 PO = PRIMARY OUT PRx = PRIMARY RECEIVE
 SI = SECONDARY IN SRx = SECONDARY RECEIVE

PART No.	FIBER TYPE	"A" LENGTH	PIGTAIL STRAIN RELIEF/CONNECTOR
5209174-3	62.5/125/250	1000mm	STRAIGHT ST
5209174-4	62.5/125/250	1000mm	STRAIGHT ST
5209174-6	62.5/125/250	1000mm	STRAIGHT ST
3-5209174-4	62.5/125/250	3000mm	STRAIGHT ST

INSERTION LOSS

INSERTION LOSS DATA INCLUDES TWO CONNECTED PAIRS TESTED PER FOTP-34 METHOD A2

OPERATE MODE, POWER ON

PI LINE TO PRX STATION 1.8 DB MAX
 SI LINE TO SRX STATION 1.8 DB MAX
 PTX STATION TO PO LINE 1.8 DB MAX
 STX STATION TO SO LINE 1.8 DB MAX

BYPASS MODE, POWER OFF

PI LINE TO PO LINE 1.8 DB MAX
 SI LINE TO SO LINE 1.8 DB MAX
 PTX STATION TO PRX STATION 5.0 DB MAX
 STX STATION TO SRX STATION 5.0 DB MAX

OPTICAL CROSSTALK </= -45 DB, PER FOTP-42

OPERATING WAVE LENGTH 750 TO 1450nm

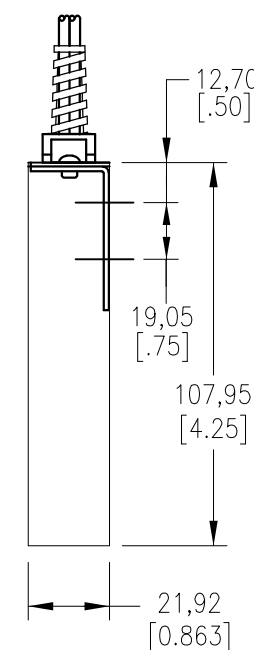
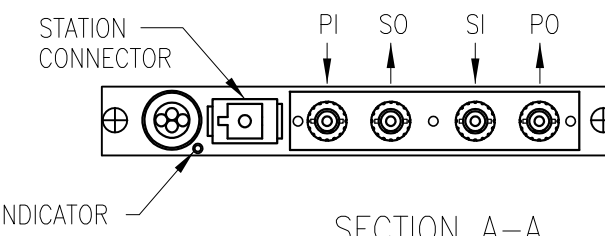
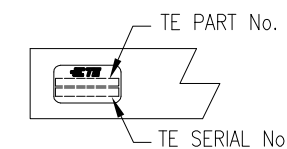
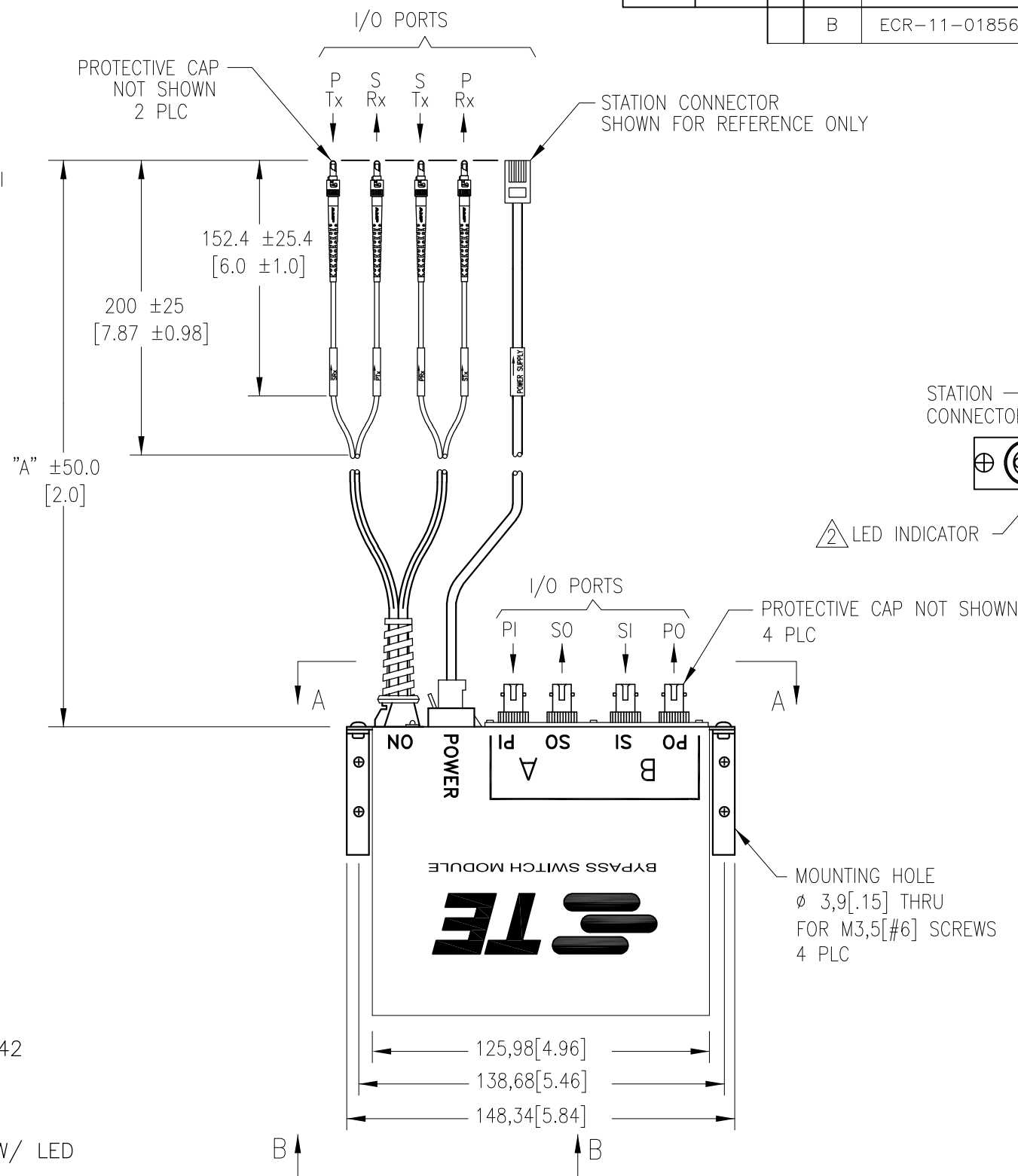
TESTED WAVELENGTH 1300nm

POWER REQUIREMENTS 4.0 TO 5.5 VDC

190 MA MAX AT 5.0 VDC W/ LED

SWITCHING SPEED

10 MILLISECONDS MAX



OBVIOUSLY OBSOLETE	KIT P/N	MODULE P/N	POWER CORD P/N	STATION CONNECTOR TYPE
	5209174-3	5209664-3	5209503-1	6 POS. SHIELDED MOD PLUG
	5209174-4	5209664-3	5209504-1	6 POS. SHIELDED MINI DIN
	5209174-6	5209664-3	5209506-1	4 POS. MOD PLUG
4	3-5209174-4	5209664-6	5209504-6	6 POS. SHIELDED MINI DIN

THIS DRAWING IS A CONTROLLED DOCUMENT.

DIMENSIONS:	TOLERANCES UNLESS OTHERWISE SPECIFIED:
mm [INCHES]	
0 PLC	± -
1 PLC	± 0.5 [0.020]
2 PLC	± 0.38 [0.015]
3 PLC	± -
4 PLC	± -
ANGLES	± 2'

MATERIAL FINISH

DWN	S. MONGOLD	01FEB06
CHK	R. PAUL	01FEB06
APVD	F. ABENDSCHEIN	01FEB06
PRODUCT SPEC		
APPLICATION SPEC		
WEIGHT	-	

		TE Connectivity	
		NAME	
BYPASS SWITCH KIT, ST, ADAPTOR/ST PIGTAILS		SIZE	CAGE CODE
DRAWING NO		RESTRICTED TO	
A300779		5209174	
CUSTOMER DRAWING		SCALE	SHEET
		1:1	1 OF 1
		REV	B