



Chipsmall Limited consists of a professional team with an average of over 10 year of expertise in the distribution of electronic components. Based in Hongkong, we have already established firm and mutual-benefit business relationships with customers from,Europe,America and south Asia,supplying obsolete and hard-to-find components to meet their specific needs.

With the principle of "Quality Parts,Customers Priority,Honest Operation,and Considerate Service",our business mainly focus on the distribution of electronic components. Line cards we deal with include Microchip,ALPS,ROHM,Xilinx,Pulse,ON,Everlight and Freescale. Main products comprise IC,Modules,Potentiometer,IC Socket,Relay,Connector.Our parts cover such applications as commercial,industrial, and automotives areas.

We are looking forward to setting up business relationship with you and hope to provide you with the best service and solution. Let us make a better world for our industry!



## Contact us

Tel: +86-755-8981 8866 Fax: +86-755-8427 6832

Email & Skype: info@chipsmall.com Web: www.chipsmall.com

Address: A1208, Overseas Decoration Building, #122 Zhenhua RD., Futian, Shenzhen, China



THIS DRAWING IS UNPUBLISHED. RELEASED FOR PUBLICATION  
 © COPYRIGHT BY TYCO ELECTRONICS CORPORATION. ALL RIGHTS RESERVED.

LOC	DIST	REVISIONS					
EA	51	P	LTR	DESCRIPTION	DATE	DWN	APVD
		A		SEE SHEET 2	05JUN06	LGE	RP

NOTE :

- CONNECTOR KEYING CONFORMS TO ANSI X3T9.5/84-48.
- LED IS 'ON' WHEN IN INSERTED STATE.
- THIS PRODUCT HAS NOT COMPLETED VALIDATION TESTING.

SPECIFICATIONS :

SWITCH LEGEND

PI = PRIMARY IN      PTx = PRIMARY TRANSMIT  
 SO = SECONDARY OUT    STx = SECONDARY TRANSMIT  
 PO = PRIMARY OUT      PRx = PRIMARY RECEIVE  
 SI = SECONDARY IN      SRx = SECONDARY RECEIVE

FIBER TYPE	62.5/125/250
------------	--------------

INSERTION LOSS

INSERTION LOSS DATA INCLUDES TWO CONNECTED PAIRS TESTED PER FOTP-34 METHOD A2

OPERATE MODE, POWER ON

PI LINE TO PRX STATION 1.8 DB MAX  
 SI LINE TO SRX STATION 1.8 DB MAX  
 PTX STATION TO PO LINE 1.8 DB MAX  
 STX STATION TO SO LINE 1.8 DB MAX

BYPASS MODE, POWER OFF

PI LINE TO PO LINE 1.8 DB MAX  
 SI LINE TO SO LINE 1.8 DB MAX  
 PTX STATION TO PRX STATION 5.0 DB MAX  
 STX STATION TO SRX STATION 5.0 DB MAX

OPTICAL CROSSTALK <math>\leq -45</math> DB, PER FOTP-42

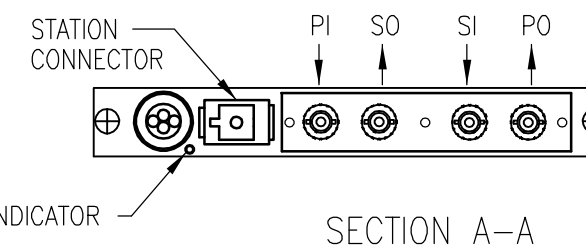
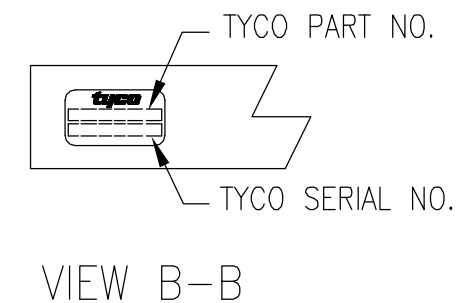
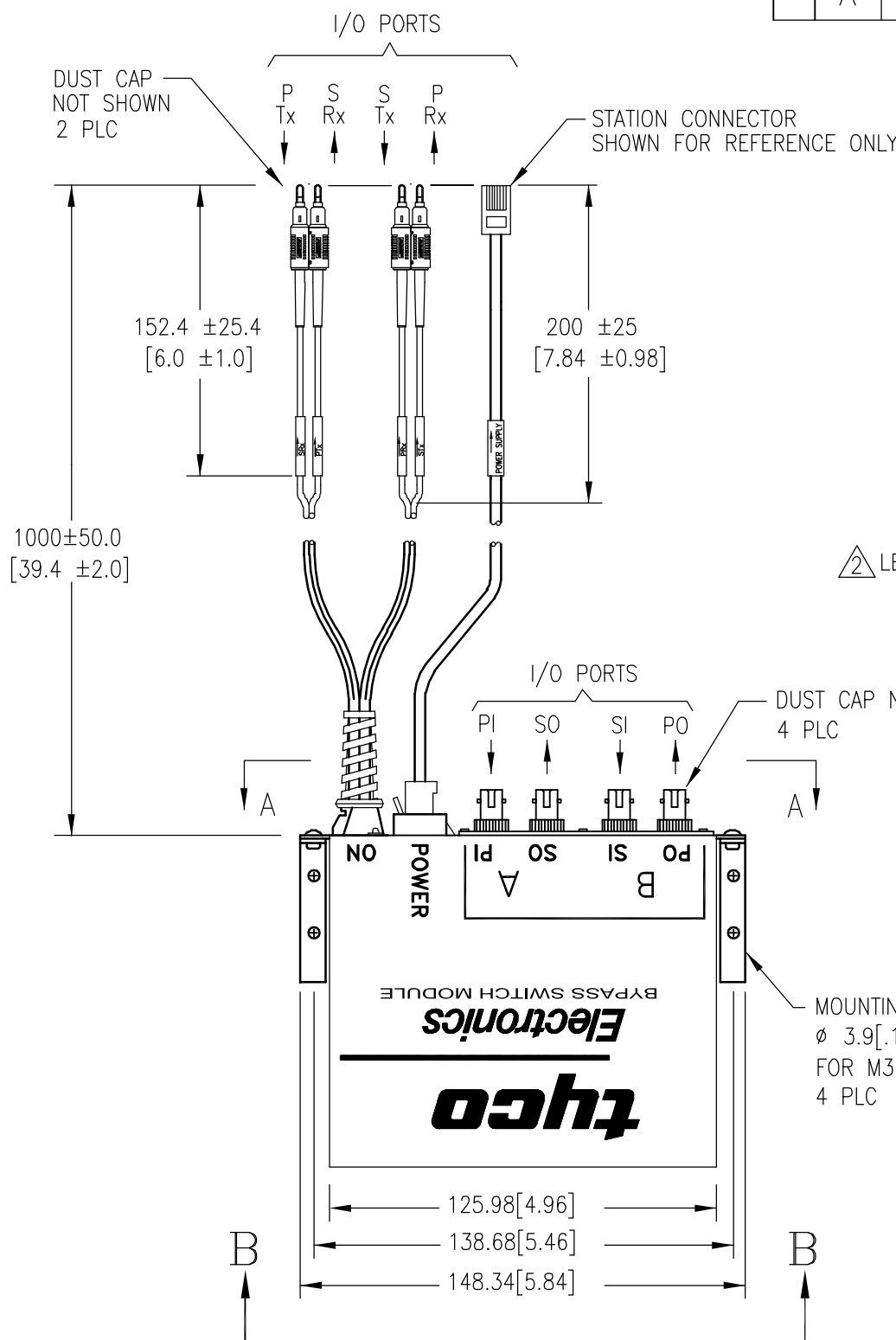
OPERATING WAVE LENGTH 750 TO 1450nm

TESTED WAVELENGTH 1300nm

POWER REQUIREMENTS 4.0 TO 5.5 VDC

190 MA MAX AT 5.0 VDC W/ LED

SWITCHING SPEED 10 MILLISECONDS MAX



KIT P/N	MODULE P/N	POWER CORD P/N	STATION CONNECTOR TYPE
5209175-3	5209665-3	5209503-1	6 POS. SHIELDED MOD PLUG
5209175-4	5209665-3	5209504-1	6 POS. SHIELDED MINI DIN
5209175-6	5209665-3	5209506-1	4 POS. MOD PLUG
5209175-8	5209665-3	5209659-2	6 POS MOD 4 PLUG 2M

THIS DRAWING IS A CONTROLLED DOCUMENT.		DWN S. MONGOLD 30JAN06	<b>tyco</b> Electronics	Tyco Electronics Corporation Harrisburg, PA 17105-3608	
DIMENSIONS: mm [INCHES]		CHK R. PAUL 30JAN06		NAME	
TOLERANCES UNLESS OTHERWISE SPECIFIED:		APVD F. ABENDSCHEIN 30JAN06	BYPASS, SWITCH KIT, ST, ADAPTOR/SC, DUPLEX, PIGTAILS		
0 PLC ± -		PRODUCT SPEC	SIZE CAGE CODE DRAWING NO RESTRICTED TO		
1 PLC ± 0.5 [.020]		APPLICATION SPEC	A3 00779 C- 5209175		
2 PLC ± 0.38 [.015]		WEIGHT	SCALE SHEET REV		
3 PLC ± -		CUSTOMER DRAWING	1:1 1 OF 2 A		
4 PLC ± -					
ANGLES ± 2'					
MATERIAL					
FINISH					

4

3

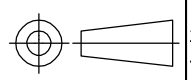
2

1

THIS DRAWING IS UNPUBLISHED. RELEASED FOR PUBLICATION  
 © COPYRIGHT - BY TYCO ELECTRONICS CORPORATION. ALL RIGHTS RESERVED.

LOC	DIST	REVISIONS					
		P	LTR	DESCRIPTION	DATE	DWN	APVD
EA	51		-	SEE REVISION CHART	-	-	-

DATE	REVISION	CHANGES	REASON	APPROVAL
30JAN06	1	PRINT CREATED	-	RP
02MAR06	2	UPDATED PER BYPASS SWITCH KIT EXAMPLE PRINT, ADD -8	-	RP
05JUN06	A	CHANGE STATUS TO ACTIVE	-	RP

THIS DRAWING IS A CONTROLLED DOCUMENT.		DWN S. MONGOLD	30JAN06	<b>tyco</b> <b>Electronics</b>	Tyco Electronics Corporation													
DIMENSIONS: mm [INCHES]		CHK R. PAUL	30JAN06		Harrisburg, PA 17105-3608													
TOLERANCES UNLESS OTHERWISE SPECIFIED:		APVD F. ABENDSCHEIN	30JAN06	NAME														
<table border="0"> <tr><td>0 PLC</td><td>± -</td></tr> <tr><td>1 PLC</td><td>± 0.5 [.020]</td></tr> <tr><td>2 PLC</td><td>± 0.38 [.015]</td></tr> <tr><td>3 PLC</td><td>± -</td></tr> <tr><td>4 PLC</td><td>± -</td></tr> <tr><td>ANGLES</td><td>± 2'</td></tr> </table>		0 PLC	± -	1 PLC	± 0.5 [.020]	2 PLC	± 0.38 [.015]	3 PLC	± -	4 PLC	± -	ANGLES	± 2'	PRODUCT SPEC		BYPASS, SWITCH KIT, ST, ADAPTOR/SC, DUPLEX, PIGTAILS		
0 PLC	± -																	
1 PLC	± 0.5 [.020]																	
2 PLC	± 0.38 [.015]																	
3 PLC	± -																	
4 PLC	± -																	
ANGLES	± 2'																	
		APPLICATION SPEC																
MATERIAL	FINISH	WEIGHT	-	SIZE	CAGE CODE	DRAWING NO	RESTRICTED TO											
-	-	-	-	A3	00779	5209175	-											
CUSTOMER DRAWING				SCALE	1:1	SHEET	2 OF 2											
				REV	A													