



Chipsmall Limited consists of a professional team with an average of over 10 year of expertise in the distribution of electronic components. Based in Hongkong, we have already established firm and mutual-benefit business relationships with customers from,Europe,America and south Asia,supplying obsolete and hard-to-find components to meet their specific needs.

With the principle of "Quality Parts,Customers Priority,Honest Operation,and Considerate Service",our business mainly focus on the distribution of electronic components. Line cards we deal with include Microchip,ALPS,ROHM,Xilinx,Pulse,ON,Everlight and Freescale. Main products comprise IC,Modules,Potentiometer,IC Socket,Relay,Connector.Our parts cover such applications as commercial,industrial, and automotives areas.

We are looking forward to setting up business relationship with you and hope to provide you with the best service and solution. Let us make a better world for our industry!



Contact us

Tel: +86-755-8981 8866 Fax: +86-755-8427 6832

Email & Skype: info@chipsmall.com Web: www.chipsmall.com

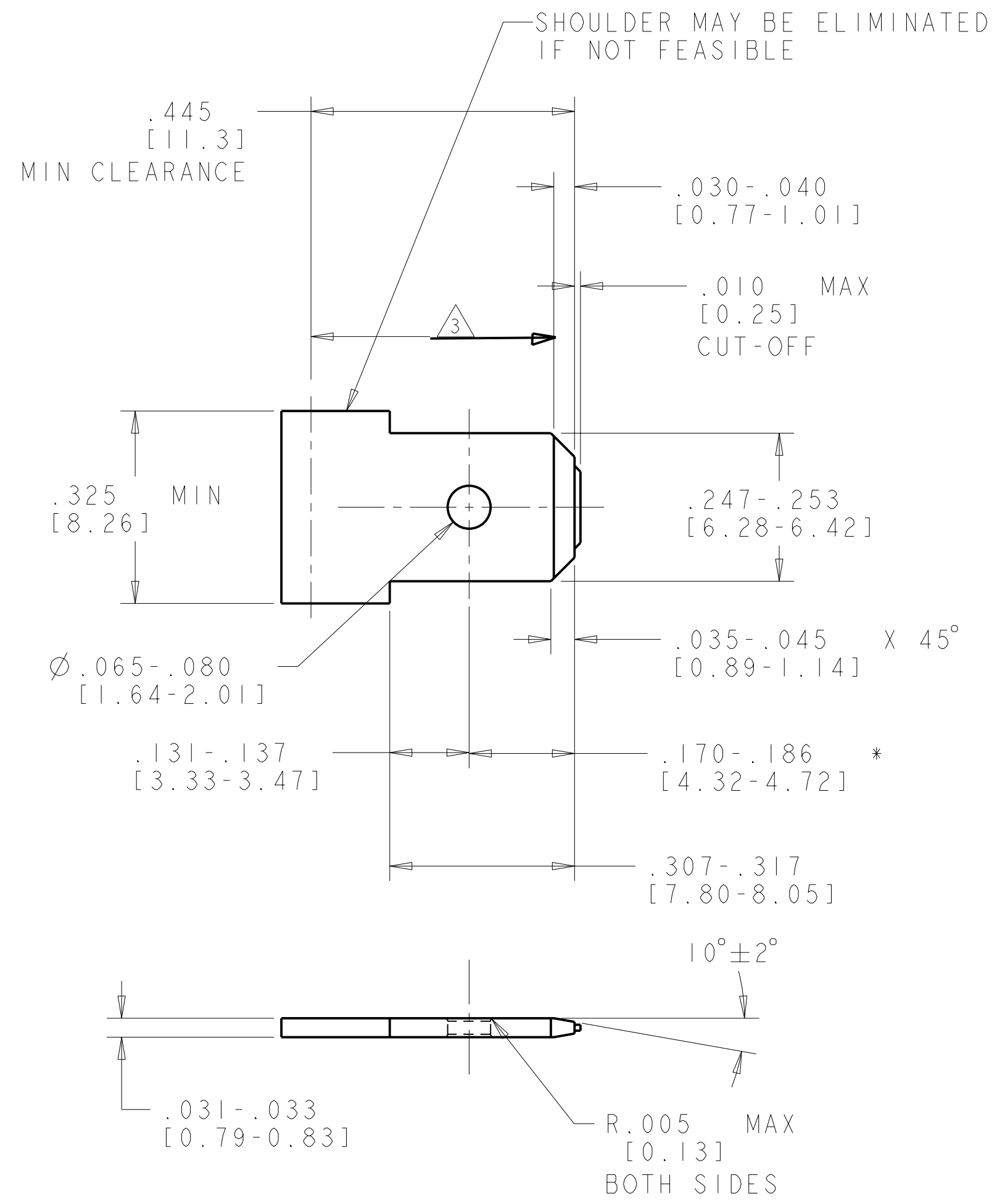
Address: A1208, Overseas Decoration Building, #122 Zhenhua RD., Futian, Shenzhen, China



THIS DRAWING IS UNPUBLISHED. RELEASED FOR PUBLICATION 20
 © COPYRIGHT 20 BY TYCO ELECTRONICS CORPORATION. ALL RIGHTS RESERVED.

LOC	DIST	REVISIONS					
AF	50	P	LTR	DESCRIPTION	DATE	DWN	APVD
				C3 REVISED PER ECR-09-012939	16JUN2009	HMR	GP

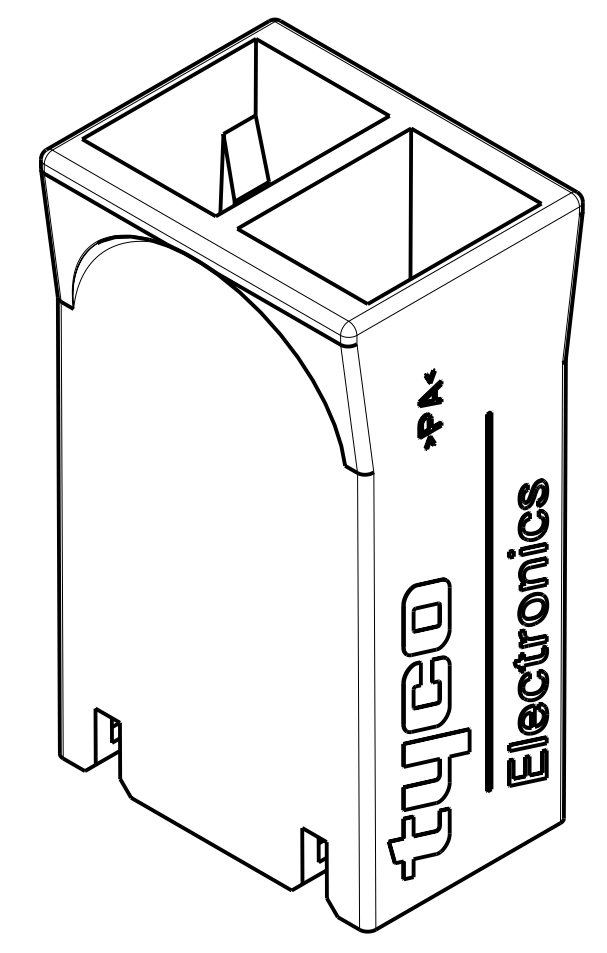
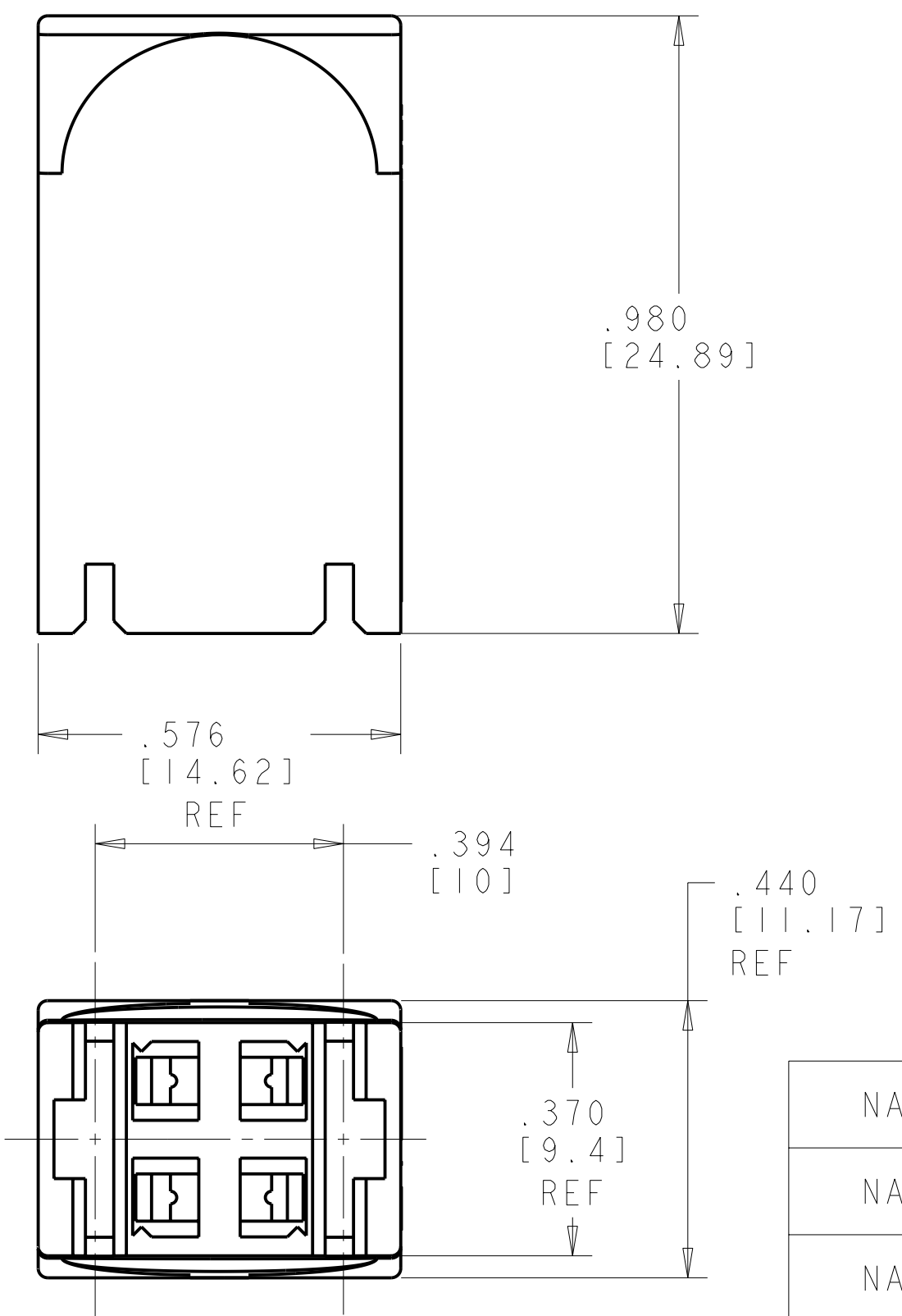
SUGGESTED MATING TAB



- 1. REPRESENTATIVE FASTON LIF RECEPTACLE INCLUDES 63306 SERIES. REPRESENTATIVE POSITIVE LOCK MKIII RECEPTACLES INCLUDES 63854 SERIES.

2. GLOW WIRE APPROVED MATERIAL, CONTACT TE ENGINEERING FOR SPECIFICATIONS.

5. MATERIAL: NYLON 66, UL94V-0, WITH UL HWI=0 AT .028[0.71] MINIMUM THICKNESS.



- 1 MATERIAL: 1/2 HARD BRASS OR NICKEL PLATED STEEL.
- 2 NO BURRS PERMISSIBLE AT HOLE.
- 3 MUST BE FLAT WITHIN .003 [0.076] OVER THIS LENGTH.
- 4 TIN PLATING IS REQUIRED ON BRASS WHEN TEMP. IS OVER 225°F.
- 5 HOLE MUST BE SYMMETRICAL ABOUT TAB CENTERLINE WITHIN .003 [0.076].

* TO BE USED ONLY WHEN SHOULDER IS ELIMINATED.

COLOR	MATERIAL	PART NUMBER
NATURAL	5	521766-3
NATURAL	NYLON 6, UL94V-2 2	521766-2
NATURAL	NYLON V0	521766-1

THIS DRAWING IS A CONTROLLED DOCUMENT FOR TYCO ELECTRONICS CORPORATION. IT IS SUBJECT TO CHANGE AND THE CONTROLLING ENGINEERING ORGANIZATION SHOULD BE CONTACTED FOR THE LATEST REVISION.

DWN	R FLAIG	04NOV2004	Tyco Electronics Harrisburg, PA 17105-3608			
CHK	K YI	04NOV2004				
APVD	K YI	04NOV2004				
NAME	HOUSING, RECEPTACLE, FASTON LIF, POSI-LOCK MKIII, .250 SERIES					
DIMENSIONS:	TOLERANCES UNLESS OTHERWISE SPECIFIED:		SIZE	CAGE CODE	DRAWING NO	RESTRICTED TO
INCHES	0 PLC ± 1 PLC ± 2 PLC ± 3 PLC ±.010 4 PLC ± ANGLES ±2° FINISH		A200779	C-521766		
MATERIAL			SCALE	SHEET	OF	REV
			CUSTOMER DRAWING	4.1	1	C3