



Chipsmall Limited consists of a professional team with an average of over 10 year of expertise in the distribution of electronic components. Based in Hongkong, we have already established firm and mutual-benefit business relationships with customers from,Europe,America and south Asia,supplying obsolete and hard-to-find components to meet their specific needs.

With the principle of “Quality Parts,Customers Priority,Honest Operation,and Considerate Service”,our business mainly focus on the distribution of electronic components. Line cards we deal with include Microchip,ALPS,ROHM,Xilinx,Pulse,ON,Everlight and Freescale. Main products comprise IC,Modules,Potentiometer,IC Socket,Relay,Connector.Our parts cover such applications as commercial,industrial, and automotives areas.

We are looking forward to setting up business relationship with you and hope to provide you with the best service and solution. Let us make a better world for our industry!



## Contact us

Tel: +86-755-8981 8866 Fax: +86-755-8427 6832

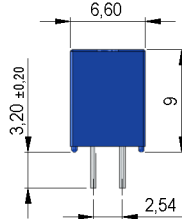
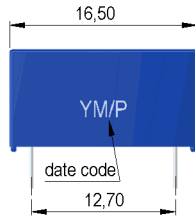
Email & Skype: info@chipsmall.com Web: www.chipsmall.com

Address: A1208, Overseas Decoration Building, #122 Zhenhua RD., Futian, Shenzhen, China



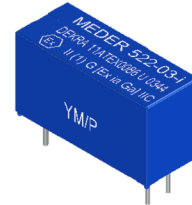
**Dimensions mm[inch]**

tolerances acc. to DIN ISO 2768-m  
Toleranzen gem. DIN ISO 2768-m

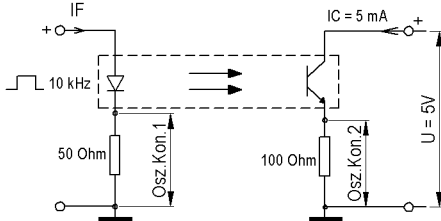


**Isometric**

Scale 1:2  
Maßstab 1:2

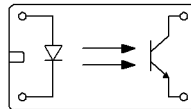


**Test circuit**



**Layout**

Top view  
Draufsicht



**Marking**

according to EN60062/factory code  
gem. EN60062/Fertigungsstätte



Elect. Coupler Characteristic	Conditions	Min	Typ	Max	Unit
Turn-on Time 1 Ton	If=10mA,Uce=5V,RL=100 Ohm		5,5		µS
Turn-Off Time 1 Toff	If=10mA,Uce=5V,RL=100 Ohm		4,2		µS
Current Transfer Ratio Ic/If CTR	If=10 mA	0,5	0,8		
Cut-Off Frequency 1 Fco	If=10mA,Uce=5V,RL=100 Ohm		50		kHz
Insulation Resistance Input/Output	RH 45%	1.000			GOhm
Insulation Voltage Input/Output Uio		4.000			VDC
Coupling capacitance Cc			0,4		pF
Creeping Distance		12			mm
Air Path Input/Output		12			mm
Insulation Distance Emitter-Detecto		2			mm

Maximum Ratings Emitter	Conditions	Min	Typ	Max	Unit
Forward Voltage Uf	If=10 mA			1,5	V
DC Forward Current If				75	mA
Reverse Voltage Ur	Ir=100 microA			5	V
Surge Forward current Ifs	t<=10 ms			500	mA
Current Reduction		0,73			mA/°C
Power Dissipation Ptot				170	mW

Maximum Ratings Detector	Conditions	Min	Typ	Max	Unit
Collector-Emitter Voltage Vce				32	VDC
Emitter-Collector Voltage Vec				5	VDC
Collector Dark Current Iceo	Uce=20V,R=1MOhm,If=0mA			0,2	µA
Collector-Emitter Saturation Voltag	If=10 mA, Ic=1 mA		0,3		VDC
Collector Peak Current Icm				100	mA
Collector Current Ic				50	mA
Power Reduction		0,91			mW/°C
Power Dissipation Ptot				100	mW



Europe: +49 / 7731 8399 0

| Email: info@standexmeder.com

USA: +1 / 508 295 0771

| Email: salesusa@standexmeder.com

Asia: +852 / 2955 1682

| Email: salesasia@standexmeder.com

Item No.:

**5252203000**

Item:

**522-03-i**

Special Product Data	Conditions	Min	Typ	Max	Unit
Connection pins				cu-alloy tinned	
Case colour				blue	
Housing material				Plastic	
Reach / RoHS conformity				yes	
Sealing compound				Polyurethan	
Approval				DEKRA 11ATEX0086 U	

Environmental data	Conditions	Min	Typ	Max	Unit
Ambient Temperature Ta		-40		85	°C
Storage temperature		-40		100	°C
Soldering temperature	wave soldering max. 5 sec.			260	°C
Shock	1/2 sine, duration 11ms, in 3 axis			50	g
Vibration	from 10 - 2000 Hz			20	g
Washability				fully sealed	

Modifications in the sense of technical progress are reserved

Designed at: 06.04.09    Designed by: KSCHIELENSKI    Approval at: 10.01.14    Approval by: KOLBRICH

Last Change at: 13.04.18    Last Change by: SSCHNECKENBURGER    Approval at: 17.04.18    Approval by: DSTASTNY

Version: 09