



Chipsmall Limited consists of a professional team with an average of over 10 year of expertise in the distribution of electronic components. Based in Hongkong, we have already established firm and mutual-benefit business relationships with customers from,Europe,America and south Asia,supplying obsolete and hard-to-find components to meet their specific needs.

With the principle of “Quality Parts,Customers Priority,Honest Operation,and Considerate Service”,our business mainly focus on the distribution of electronic components. Line cards we deal with include Microchip,ALPS,ROHM,Xilinx,Pulse,ON,Everlight and Freescale. Main products comprise IC,Modules,Potentiometer,IC Socket,Relay,Connector.Our parts cover such applications as commercial,industrial, and automotives areas.

We are looking forward to setting up business relationship with you and hope to provide you with the best service and solution. Let us make a better world for our industry!



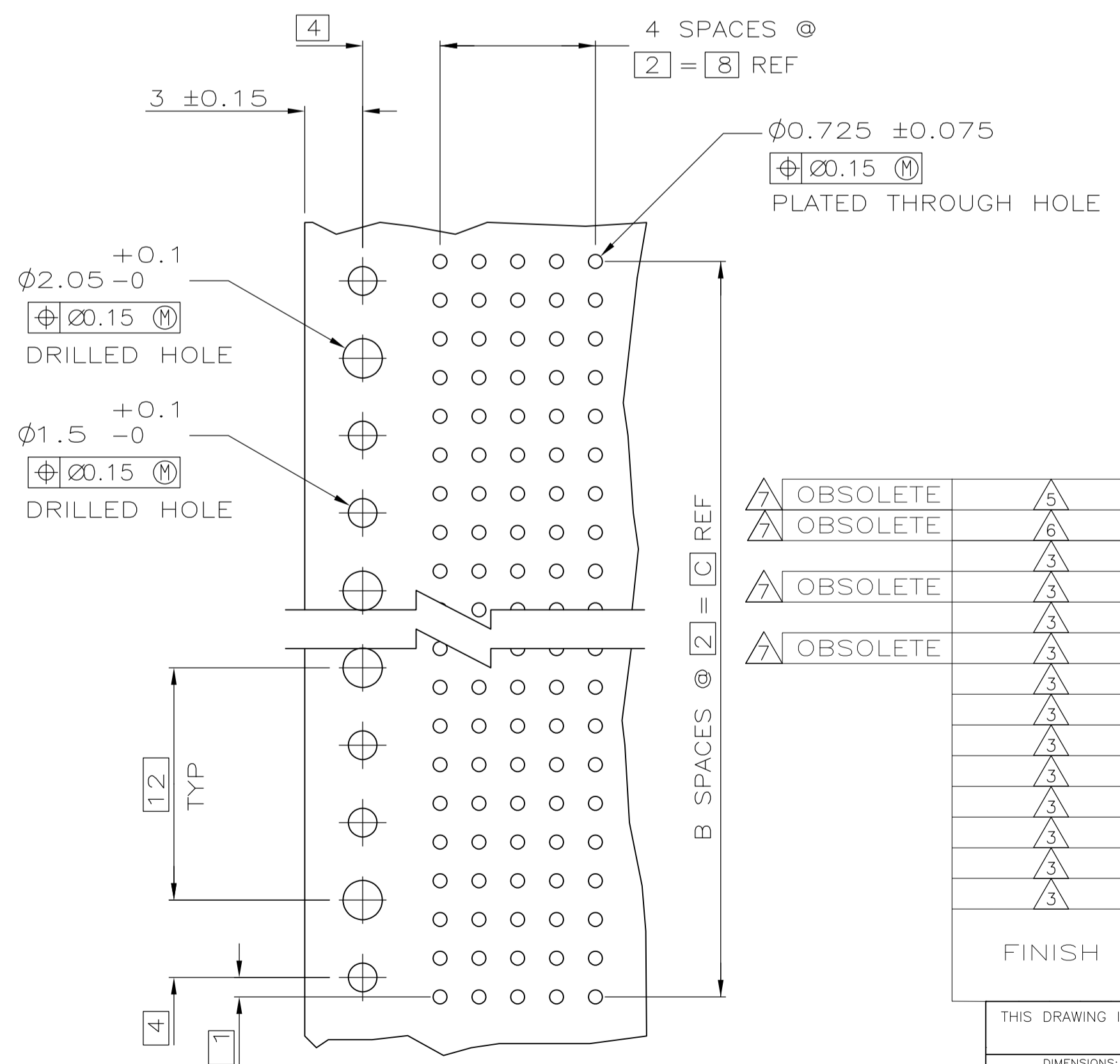
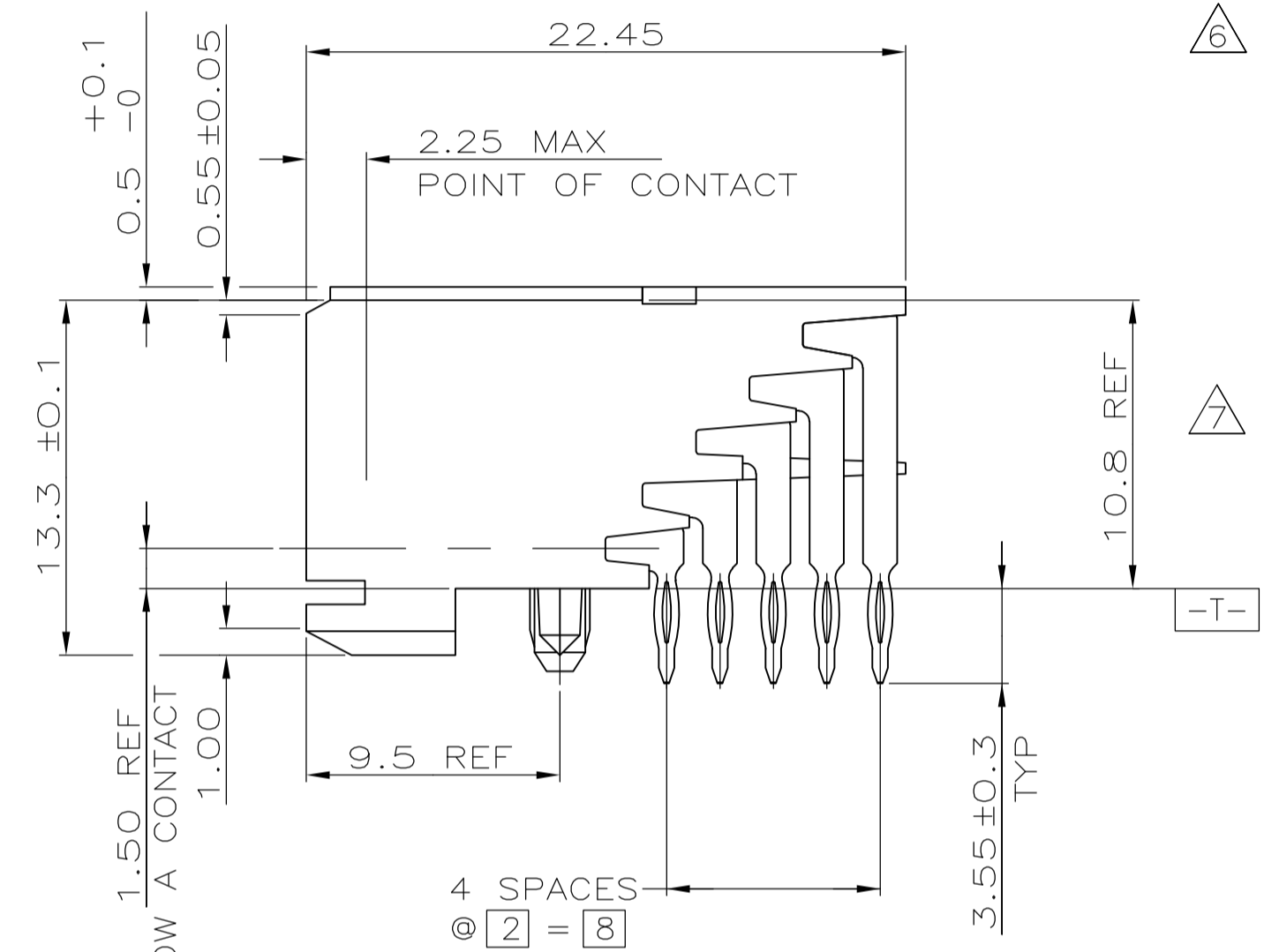
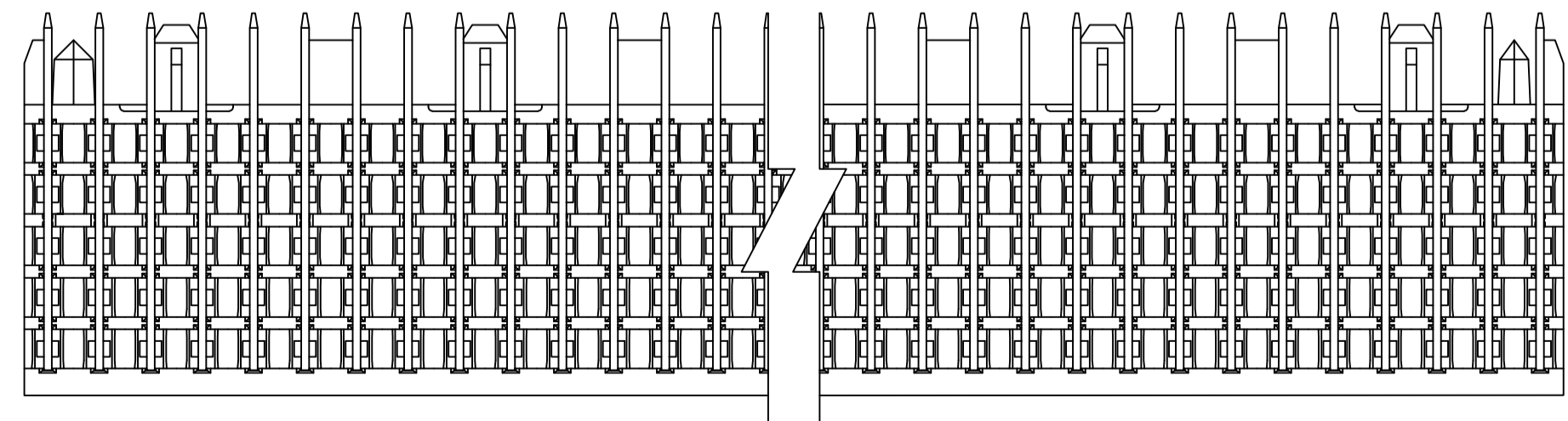
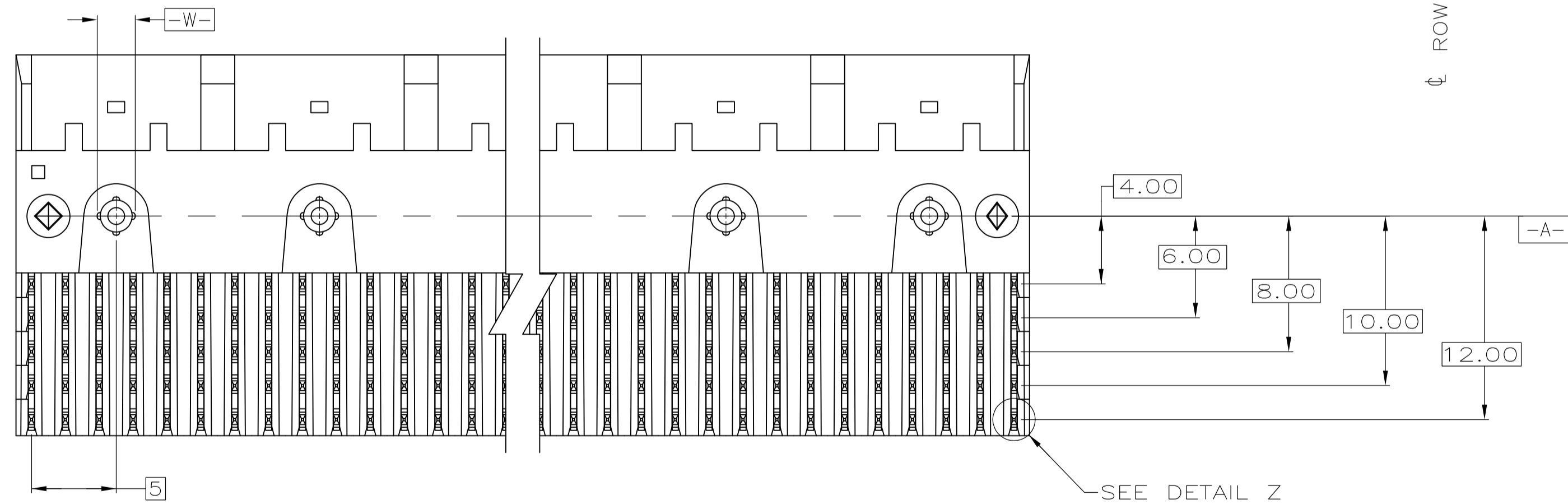
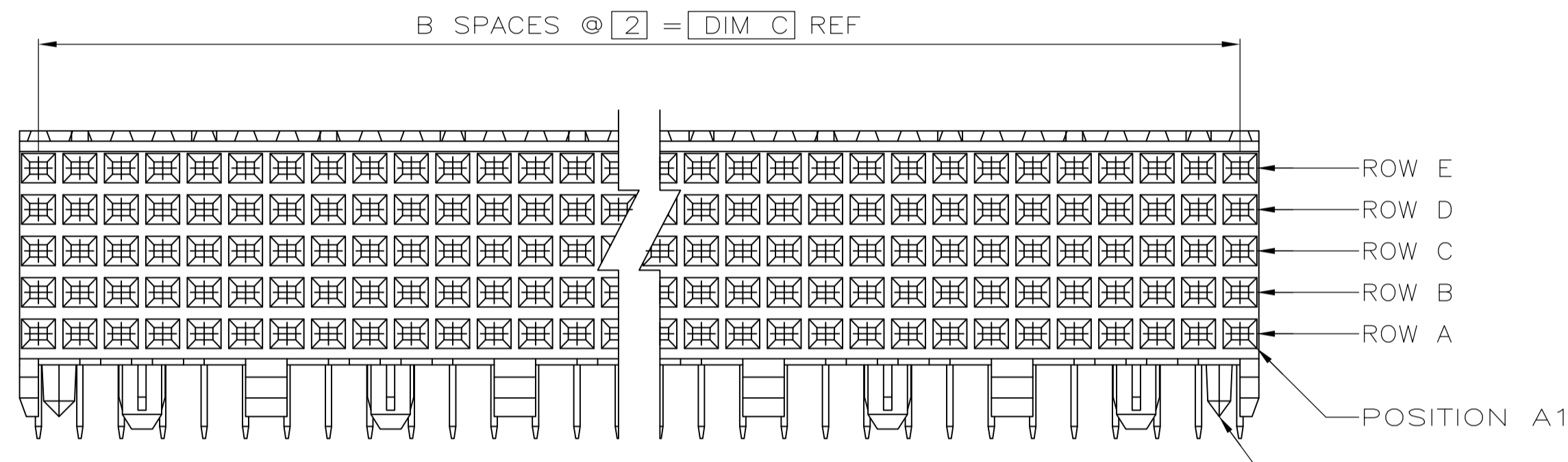
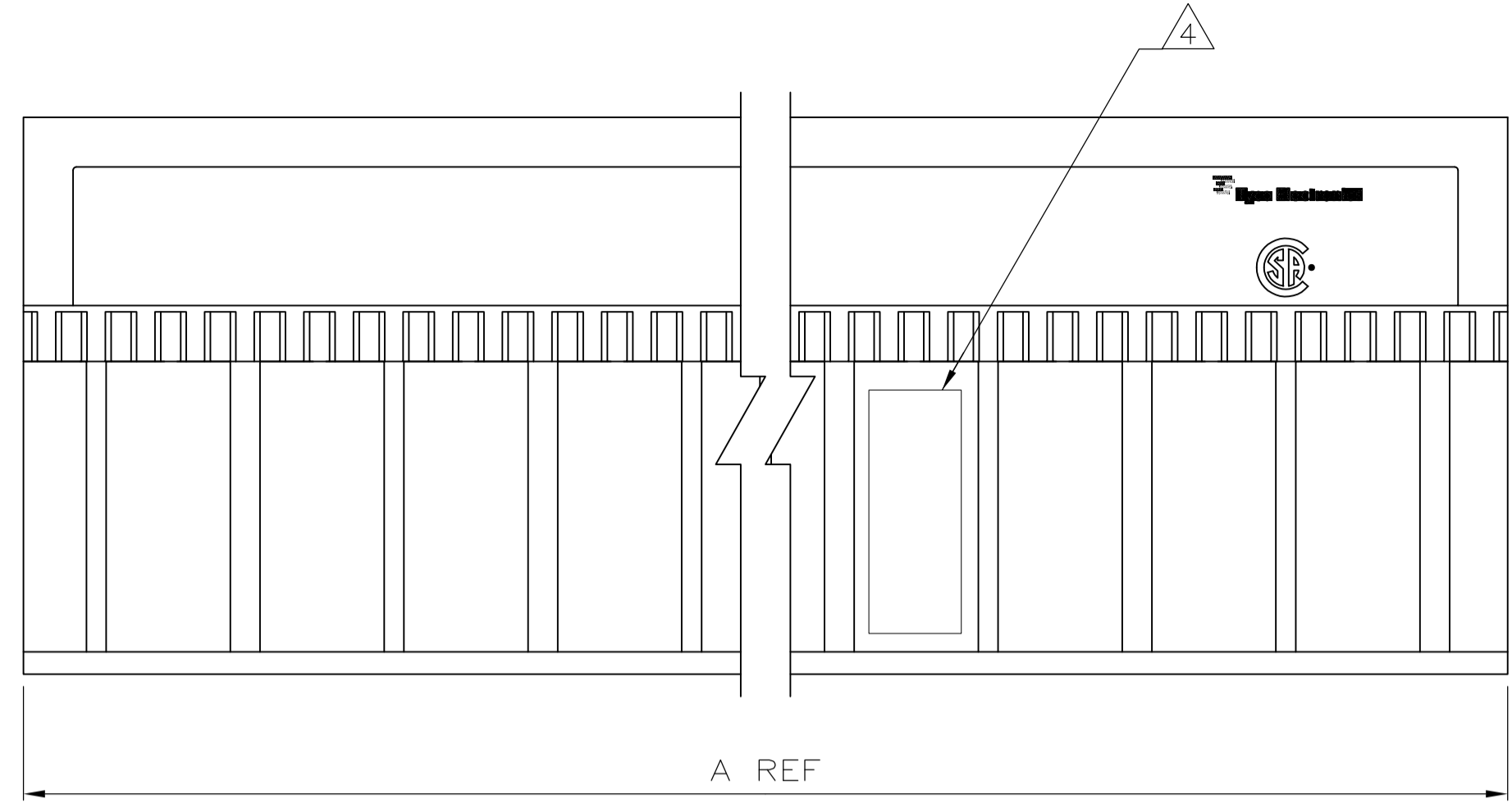
Contact us

Tel: +86-755-8981 8866 Fax: +86-755-8427 6832

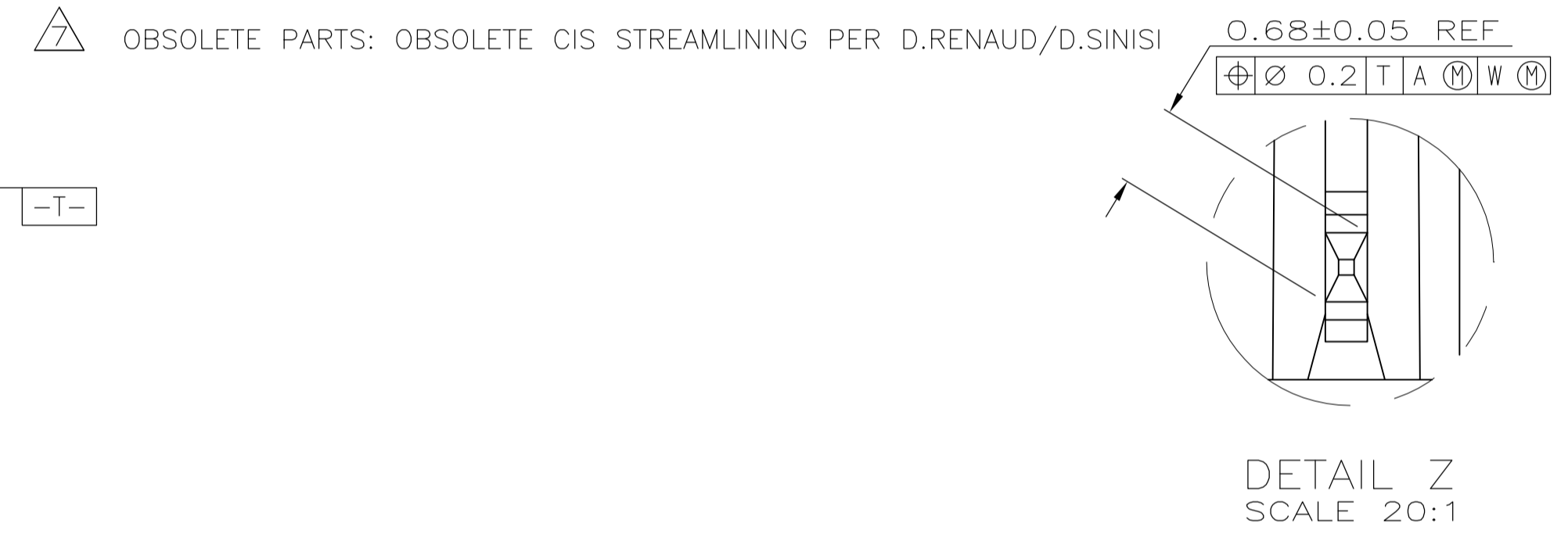
Email & Skype: info@chipsmall.com Web: www.chipsmall.com

Address: A1208, Overseas Decoration Building, #122 Zhenhua RD., Futian, Shenzhen, China





- ① HOUSING MATERIAL: LIQUID CRYSTAL POLYMER
COLOR: NATURAL.
- ② CONTACT MATERIAL: PHOSPHOR-BRONZE.
- ③ CONTACT FINISH:
UNDERPLATE (ENTIRE CONTACT):
0.00127 MIN NICKEL PER SAE-AMS-QQ-N-290
ON MATING SURFACES:
CONFORMS TO ALL TESTING SPECIFIED FOR TELCORDIA
UNCONTROLLED ENVIRONMENT.
ON LEADS:
0.0006 MIN MATTE TIN PER ASTM B 545 OVER UNDERPLATE.
LUBRICATION (MIN MATING SURFACES):
SURFACE CONDITIONER AFTER PLATING.
- ④ PART MARKING LOCATED APPROXIMATELY AS SHOWN.
- ⑤ CONTACT FINISH:
UNDERPLATE (ENTIRE CONTACT):
0.00127 MIN NICKEL PER SAE-AMS-QQ-N-290
ON MATING SURFACES:
0.00076 MIN NICKEL OR COBALT HARDENED GOLD
PER ASTM B-488 OVER UNDERPLATE.
ON LEADS:
0.0006 MIN MATTE TIN PER ASTM B 545 OVER UNDERPLATE.
LUBRICATION (MIN MATING SURFACES):
SURFACE CONDITIONER AFTER PLATING.
- ⑥ CONTACT FINISH:
UNDERPLATE (ENTIRE CONTACT):
0.00127 MIN NICKEL PER SAE-AMS-QQ-N-290
ON MATING SURFACES:
0.00127 MIN NICKEL OR COBALT HARDENED GOLD
PER ASTM B-488 OVER UNDERPLATE.
ON LEADS:
0.0006 MIN MATTE TIN PER ASTM B 545 OVER UNDERPLATE.
LUBRICATION (MIN MATING SURFACES):
SURFACE CONDITIONER AFTER PLATING.



①	OBSOLETE	⑤	NO	46	23	47.88	120	-3-5223008-4
②	OBSOLETE	⑥	NO	46	23	47.88	120	-2-5223008-4
③	NO	③	NO	214	107	215.88	540	1-5223008-2
④	OBSOLETE	⑤	NO	130	65	131.88	330	-1-5223008-1
⑤	NO	③	NO	118	59	119.88	300	1-5223008-0
⑥	OBSOLETE	⑤	NO	106	53	107.88	270	-5223008-9
⑦	NO	③	NO	94	47	95.88	240	5223008-8
⑧	NO	③	NO	82	41	83.88	210	5223008-7
⑨	NO	③	NO	70	35	71.88	180	5223008-6
⑩	NO	③	NO	58	29	59.88	150	5223008-5
⑪	NO	③	NO	46	23	47.88	120	5223008-4
⑫	NO	③	NO	34	17	35.88	90	5223008-3
⑬	NO	③	NO	22	11	23.88	60	5223008-2
⑭	YES	③	NO	10	5	11.88	30	5223008-1
FINISH		POSITIONING PEGS	C	B	A	NO OF SIGNAL POSN		PART NUMBER

THIS DRAWING IS A CONTROLLED DOCUMENT.

STE TE Connectivity

ASSEMBLY, RECEPTACLE, SIGNAL, RIGHT ANGLE, Z-PACK 2mm FB, 5 ROW, PRESS FIT LEAD

00779 5223008

SCALE 4:1 SHEET 1 OF 1 REV B3