



Chipsmall Limited consists of a professional team with an average of over 10 year of expertise in the distribution of electronic components. Based in Hongkong, we have already established firm and mutual-benefit business relationships with customers from,Europe,America and south Asia,supplying obsolete and hard-to-find components to meet their specific needs.

With the principle of "Quality Parts,Customers Priority,Honest Operation,and Considerate Service",our business mainly focus on the distribution of electronic components. Line cards we deal with include Microchip,ALPS,ROHM,Xilinx,Pulse,ON,Everlight and Freescale. Main products comprise IC,Modules,Potentiometer,IC Socket,Relay,Connector.Our parts cover such applications as commercial,industrial, and automotives areas.

We are looking forward to setting up business relationship with you and hope to provide you with the best service and solution. Let us make a better world for our industry!



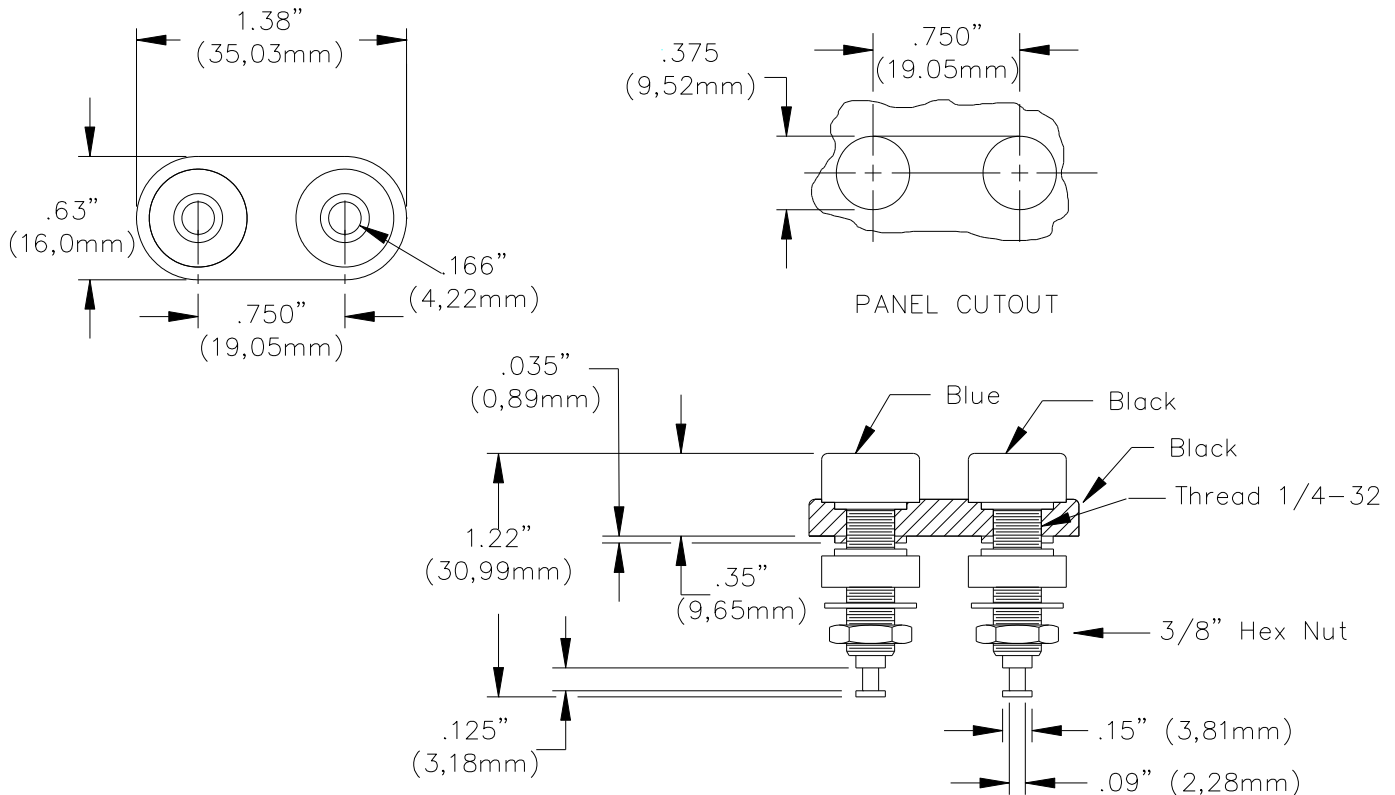
Contact us

Tel: +86-755-8981 8866 Fax: +86-755-8427 6832

Email & Skype: info@chipsmall.com Web: www.chipsmall.com

Address: A1208, Overseas Decoration Building, #122 Zhenhua RD., Futian, Shenzhen, China





FEATURES:

- ✓ High temperature insulation material for use up to +428°F, (+220°C).
- ✓ Mounts in panels from .070" to .375" (1.60mm to 9.53mm).
- ✓ Mates with Pomona's MDP and all standard double banana plugs.
- ✓ Ideal for mounting to panels or chassis boxes.

MATERIALS:

Banana Jack Insulation: Polyphenylene Sulfide Molded to Banana Jack Bodies, Color Blue and Black

Mounting Plate: Polyphenylene Sulfide, Color Black

Insulator: Polyphenylene Sulfide

Hex Nut: 3/8" 1/4-32: Nickel Plated Brass

Lockwasher: 1/4 Internal Tooth, Nickel Plated Steel

Banana Jack Body/Solder Turret: Brass, H.H. per QQ-B-626, Alloy 360, 1/2 Hard.

Finish, Banana Jack Body/Solder Turret: Bright tin plated per MIL-T-10727.

RATINGS:

Operating Voltage: Hands free usage in controlled voltage environments: 2500 Vrms maximum. *For CE compliance:* not intended for hand-held use at voltages above 33 Vrms/70 Vdc.

Current: 15 Amperes

Operating Temperature: +428°F (+220°C).

All dimensions are in inches. Tolerances (except noted): .xx = ±.02" (.51 mm), .xxx = ±.005" (.127 mm).

All specifications are to the latest revisions. Specifications are subject to change without notice.

Registered trademarks are the property of their respective companies.

Sales: 800-490-2361 Fax: 888-403-3360 Technical Support: 800-241-2060 (technicalsupport@pomonatest.com)
For "Where to Buy" information, visit the Pomona web site at www.pomonaelectronics.com

ORDERING INFORMATION:

Model: 5233-0 (Black base with one black and one blue banana jack)

All dimensions are in inches. Tolerances (except noted): .xx = $\pm .02$ " (.51 mm), .xxx = $\pm .005$ " (.127 mm).

All specifications are to the latest revisions. Specifications are subject to change without notice.

Registered trademarks are the property of their respective companies.

Sales: 800-490-2361 Fax: 888-403-3360 Technical Support: 800-241-2060 (technicalsupport@pomonatest.com)
For "Where to Buy" information, visit the Pomona web site at www.pomonaelectronics.com