



Chipsmall Limited consists of a professional team with an average of over 10 year of expertise in the distribution of electronic components. Based in Hongkong, we have already established firm and mutual-benefit business relationships with customers from,Europe,America and south Asia,supplying obsolete and hard-to-find components to meet their specific needs.

With the principle of "Quality Parts,Customers Priority,Honest Operation,and Considerate Service",our business mainly focus on the distribution of electronic components. Line cards we deal with include Microchip,ALPS,ROHM,Xilinx,Pulse,ON,Everlight and Freescale. Main products comprise IC,Modules,Potentiometer,IC Socket,Relay,Connector.Our parts cover such applications as commercial,industrial, and automotives areas.

We are looking forward to setting up business relationship with you and hope to provide you with the best service and solution. Let us make a better world for our industry!



## Contact us

Tel: +86-755-8981 8866 Fax: +86-755-8427 6832

Email & Skype: info@chipsmall.com Web: www.chipsmall.com

Address: A1208, Overseas Decoration Building, #122 Zhenhua RD., Futian, Shenzhen, China



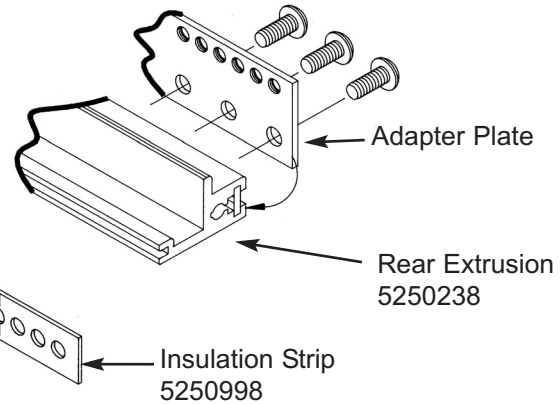
# Non EMC DIN-Based VectorPak™ Subracks

## Rack Components & Accessories



### Adapter Plates (Z-Rail Type)

Part No.	Description
AS1/2 (Pkg of 2)	Adapter plate for mounting DIN connectors directly onto subrack, 84 tapped holes (2.5mm x 4.5mm pitch) To be used without backplane



### Insulation Strips

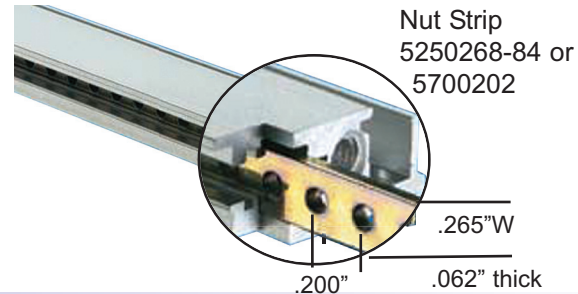
Mounted between backplane and rear extrusion

Part No.	HP	Width
5250998-84	84	17.00" (431.8mm)

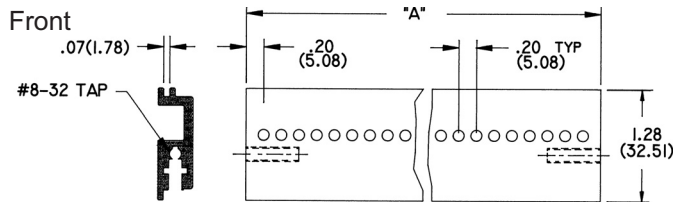
### Nut Strips

Threaded mounting holes spaced at 0.2" centers slide into extrusion grooves, can be used to anchor panels, cards or other components. Used on front & rear extrusions on all Vector DIN based metric subracks.

Part No.	HP	Width
5250268-84	84	17" (431.8mm)
5250268-63	63	12.8" (325.1mm)
5250268-42	42	8.6" (218.4mm)
5250268-21	21	4.4" (111.8mm)



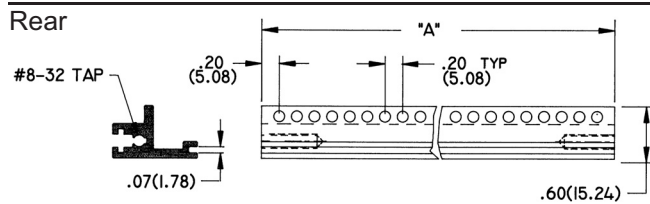
## Extrusions



All extrusions available in any length

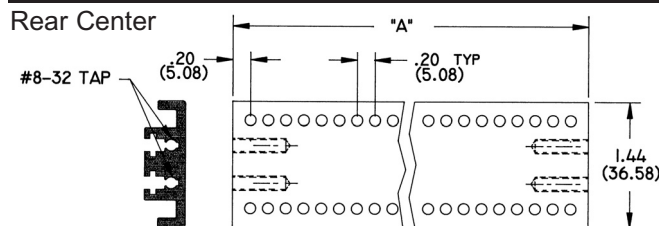
Part No.	HP	A
5250236-84	84	17.00" (431.8)
5250236-63	63	12.80" (325.8)
5250236-42	42	8.60" (218.4)
5250236-21	21	4.40" (11.8)

Pack of 12 8-32 screws, P/N HD94



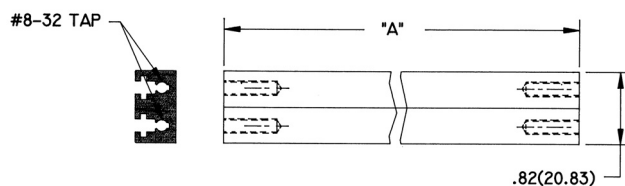
Part No.	HP	A
5250238-84	84	17.00" (431.8)
5250238-63	63	12.80" (325.8)
5250238-42	42	8.60" (218.4)
5250238-21	21	4.40" (11.8)

Pack of 12 8-32 screws, P/N HD94



Part No.	HP	A
5250237-84	84	17.00" (431.8)
5250237-63	63	12.80" (325.8)
5250237-42	42	8.60" (218.4)
5250237-21	21	4.40" (11.8)

Pack of 12 8-32 screws, P/N HD94



Part No.	HP	A
5250229-84	84	17.00" (431.8)
5250229-63	63	12.80" (325.8)
5250229-42	42	8.60" (218.4)
5250229-21	21	4.40" (11.8)

Pack of 12 8-32 screws, P/N HD94

Non EMC Subracks

