



Chipsmall Limited consists of a professional team with an average of over 10 year of expertise in the distribution of electronic components. Based in Hongkong, we have already established firm and mutual-benefit business relationships with customers from,Europe,America and south Asia,supplying obsolete and hard-to-find components to meet their specific needs.

With the principle of “Quality Parts,Customers Priority,Honest Operation,and Considerate Service”,our business mainly focus on the distribution of electronic components. Line cards we deal with include Microchip,ALPS,ROHM,Xilinx,Pulse,ON,Everlight and Freescale. Main products comprise IC,Modules,Potentiometer,IC Socket,Relay,Connector.Our parts cover such applications as commercial,industrial, and automotives areas.

We are looking forward to setting up business relationship with you and hope to provide you with the best service and solution. Let us make a better world for our industry!



Contact us

Tel: +86-755-8981 8866 Fax: +86-755-8427 6832

Email & Skype: info@chipsmall.com Web: www.chipsmall.com

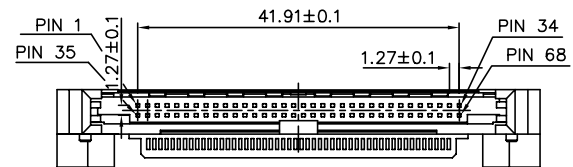
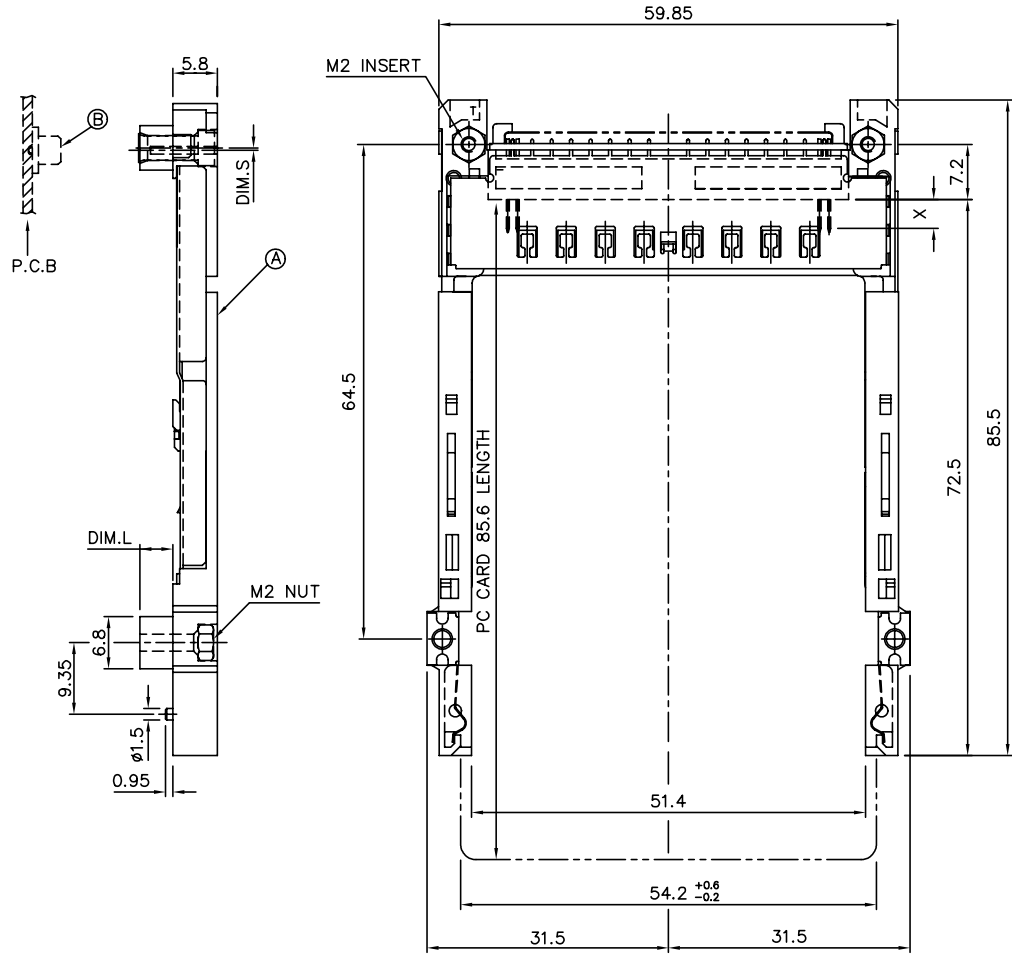
Address: A1208, Overseas Decoration Building, #122 Zhenhua RD., Futian, Shenzhen, China



FCI CONFIDENTIAL

FCI CONFIDENTIAL
 PROPRIETARY INFORMATION OF FCI. No part of this information shall be disclosed in any way or disclosed to others without the written consent of FCI.
 Copyright FCI.

PRODUCT NO.	DIM.L	DIM.S
52599-022/022LF	2.2	1.0
52599-043/043LF	4.3	-0.3
52599-050/050LF	5.0	-0.3



P/N: 52599-***/***/LF
 ABOVE P.C.B

NOTES:

- MATERIAL:
 - 1.1 EJECT HEADER ASS'Y
 PLASTIC HOUSING: HIGH TEMPERATURE THERMOPLASTIC UL94V-0 BLACK
 PIN: COPPER ALLOY
 PCB: FR4
 PLASTIC GUIDE: HIGH TEMPERATURE THERMOPLASTIC UL94V-0 BLACK
 - 1.2 RECEPTACLE
 PLASTIC: HIGH TEMPERATURE THERMOPLASTIC UL94V-0 BLACK
 PIN: BeCu
- FINISH
 PIN :
 UNDER PLATING: 1.27 um MIN. Ni
 CONTACT AREA: 0.076 um MIN. GOLD

 SOLDER TAIL: 2.5 um MIN. Sn-Pb
 : 2.5 um MIN. PURE Sn (FOR -***/LF)

 GROUND SHIELD :
 UNDER PLATING: 1.27 um MIN. Ni
 CONTACT SURFACE: 0.2 um GOLD (ONE SIDE ONLY)
- P.C.B. ARE AS APPEARS INSTALLED
- DIM "X"

4.25±0.1	3.5±0.1	5.0±0.1
OTHERS	36,67	1,17,34,35,51,68
- DO NOT TOUCH AND KEEP CLEAN THE SURFACES OF PCB OF HEADER ASS'Y.
- IF LEAD FREE P/N. THE HOUSING WILL WITHSTAND EXPOSURE TO 260°C PEAK TEMPERATURE FOR 10 SECONDS IN A WAVE SOLDER APPLICATION WITH A 1.00MM MINIMUM THICK CIRCUIT BOARD.
- LEAD FREE PRODUCT MEETS EUROPEAN UNION DIRECTIVES AND OTHER COUNTRY REGULATIONS AS DESCRIBED IN GS-22-008
- IF LEAD FREE P/N. PACKAGING MEETS GS-14-920 SPECIFICATION
- PRODUCT SPEC:110-263

ORDERING INFORMATION

NAME	PART NO.	Q'TY
Ⓐ EJECT HEADER ASS'Y	52599-***/***/LF	1
Ⓑ MATING RECEPTACLE	73277-101000/101402LF	1

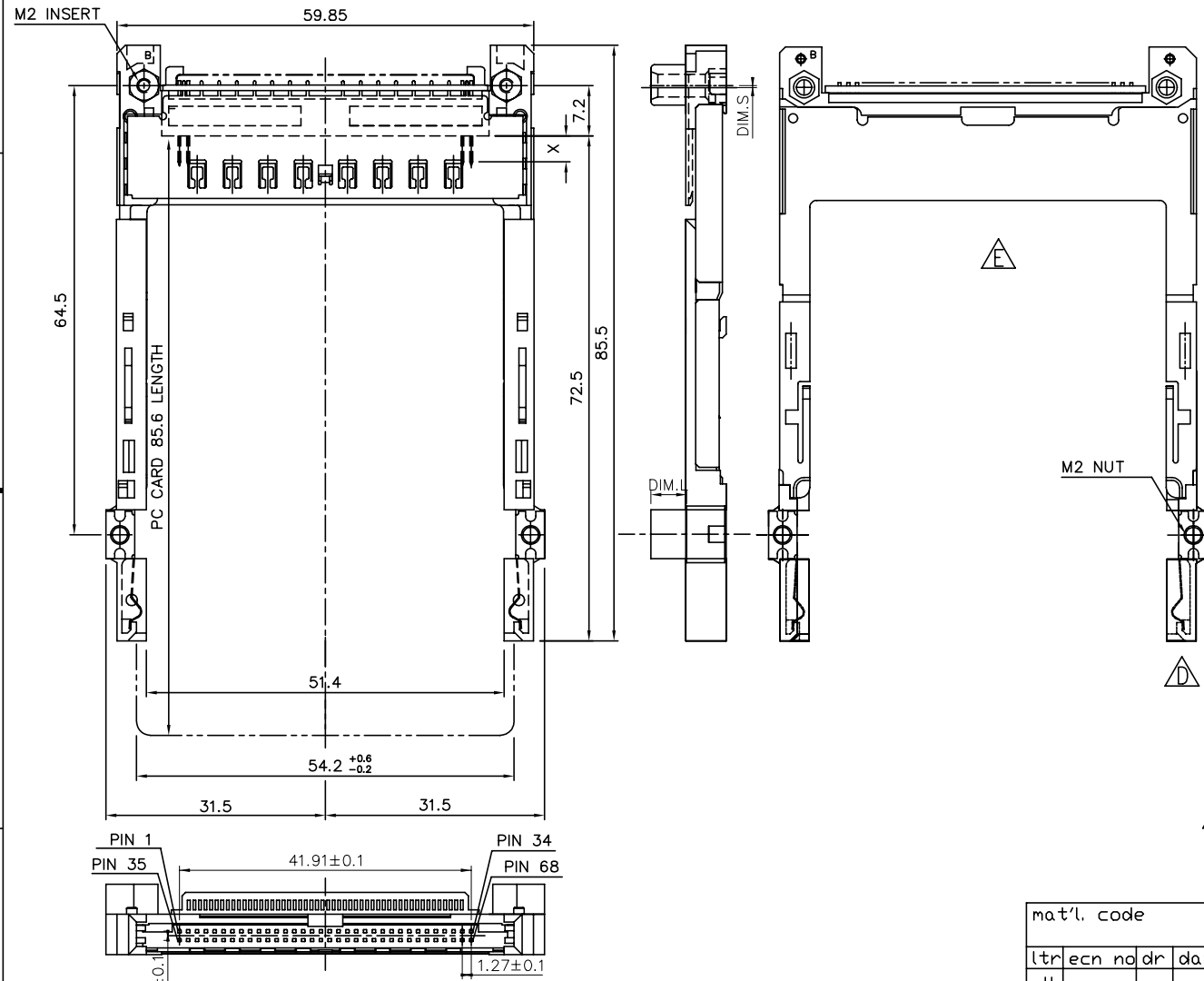
mat'l. code		surface ISO 1302		tolerance ISO 406 ISO 1101		projection 1:1		product family CARDBUS	
l'tec n n d r		date		tolerances unless otherwise specified		title		CARDBUS NONE PUSH ROD, TYPE 1/2/3	
H	EX-N-011389	ZK	04/02/12	angles	linear	± 0.30	MM	dwg no	
B	T00270	WL	08/04/00					sheet 1 of 5 size	
C	N05-0135	WB	05/27/05	±2'			scale 1:2:1	52599	
D	N05-0316	MZ	11/18/05	chr	Mike Zhou	08/18/06		A4	
E	N06-0081	MZ	03/28/06	engr	Mike Zhou	08/18/06		type CUSTOMER Drawing	
F	N06-0220	MZ	08/18/06	chr	Mike Zhou	08/18/06			
G	N08-0028	MZ	11/21/06	appd	Qin David	08/18/06			
sheet index	revision	H	H	H	H	H			
	sheet	1	2	3	4	5			

FCI CONFIDENTIAL



This document is the property of and embodies CONFIDENTIAL PROPRIETARY information of FCI. No part of this information or this document may be used in any way or disclosed to others without the written consent of FCI.
Copyright FCI.

PRODUCT NO.	DIM.L	DIM.S
52599-550	5.0	-0.3
52599-550LF	5.0	-0.3
52599-550MLF	5.0	-0.3



P/N: 52599-550/550LF/550MLF
BELOW P.C.B

NOTES:

- MATERIAL:
 - 1.1 EJECT HEADER ASS'Y
PLASTIC HOUSING: HIGH TEMPERATURE THERMOPLASTIC UL94V-0 BLACK
PIN: COPPER ALLOY
PCB: FR4
PLASTIC GUIDE: HIGH TEMPERATURE THERMOPLASTIC UL94V-0 BLACK
 - 1.2 RECEPTACLE
PLASTIC: HIGH TEMPERATURE THERMOPLASTIC UL94V-0 BLACK
PIN: BeCu
- FINISH
PIN :
UNDER PLATING: 1.27 um MIN. Ni
CONTACT AREA 1: 0.076 um MIN. GOLD

CONTACT AREA 2 : 0.076 um MIN. GOLD (FOR****-MLF)
SOLDER TAIL:1) 2.5 um MIN. Sn-Pb
:2) 2.5 um MIN. PURE Sn (FOR -***LF&-***MLF)
- GROUND SHIELD :
UNDER PLATING: 1.27 um MIN. Ni
CONTACT SURFACE: 0.2 um GOLD (ONE SIDE ONLY)
- P.C.B. ARE AS APPEARS INSTALLED
- DIM "X"

4.25±0.1	3.5±0.1	5.0±0.1
OTHERS	36,67	1,17,34,35,51,68
- DO NOT TOUCH AND KEEP CLEAN THE SURFACES OF PCB OF HEADER ASS'Y.
- IF LEAD FREE P/N. THE HOUSING WILL WITHSTAND EXPOSURE TO 260°C PEAK TEMPERATURE FOR 10 SECONDS IN A WAVE SOLDER APPLICATION WITH A 1.00MM MINIMUM THICK CIRCUIT BOARD.
- LEAD FREE PRODUCT MEETS EUROPEAN UNION DIRECTIVES AND OTHER COUNTRY REGULATIONS AS DESCRIBED IN GS-22-008
- IF LEAD FREE P/N. PACKAGING MEETS GS-14-920 SPECIFICATION
- PRODUCT SPEC:110-263

ORDERING INFORMATION

NAME	PART NO.	Q'TY
(A) EJECT HEADER ASS'Y	52599-***/***/**LF	1
(B) MATING RECEPTACLE	73277-101000/101402LF	1

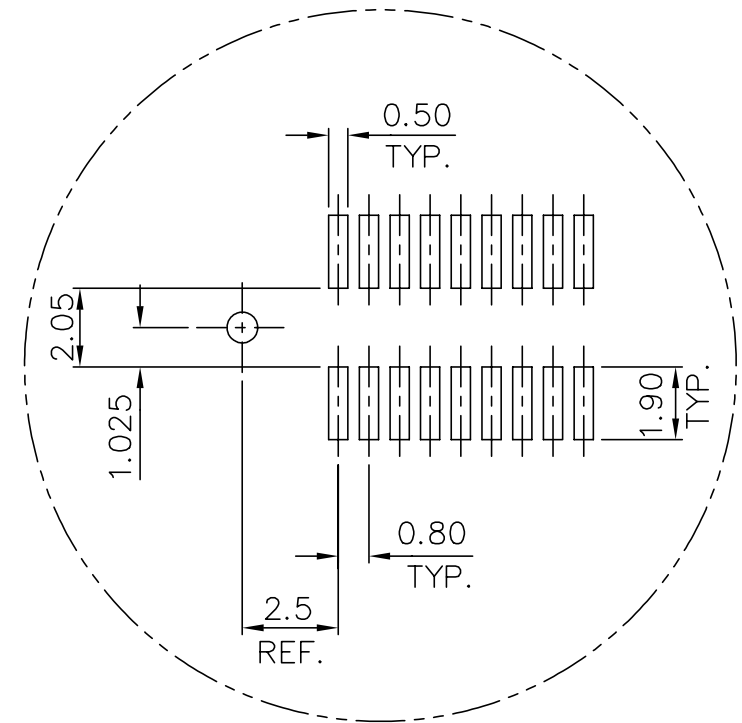
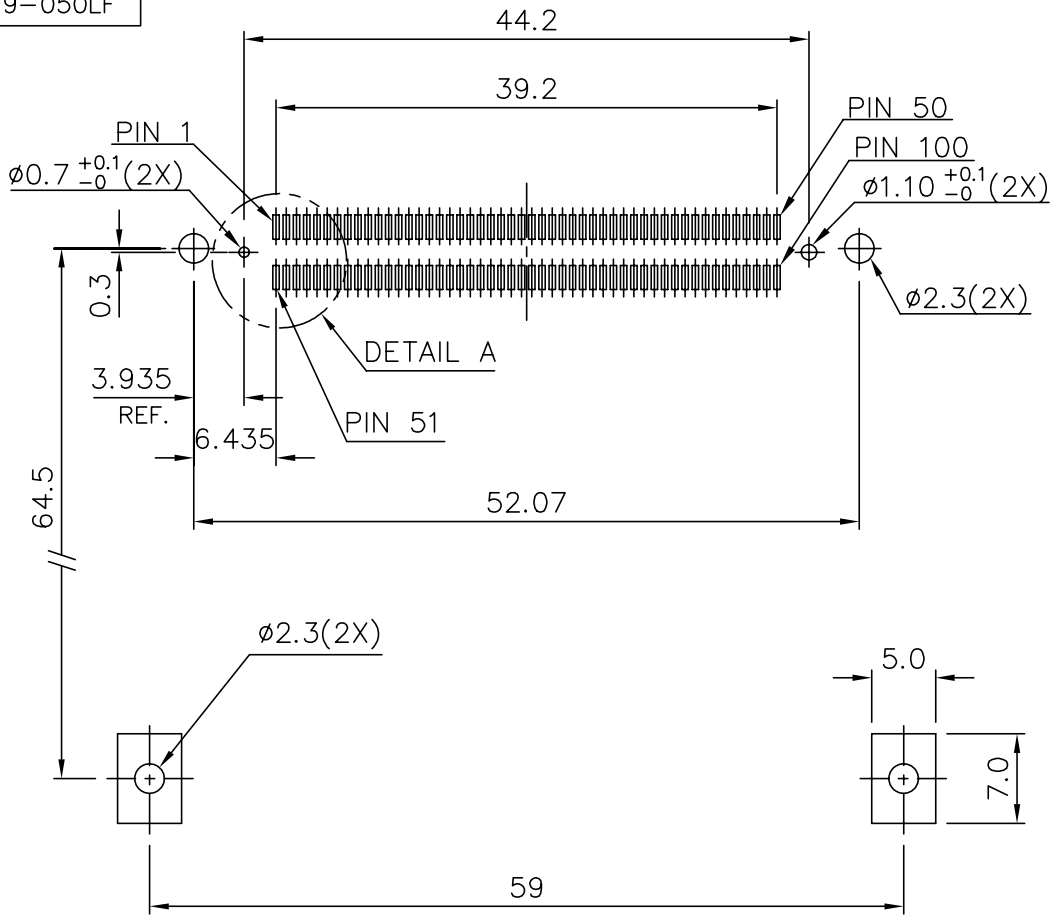
mat'l. code	surface ISO 1302	tolerance ISO 406 ISO 1101	projection MM	product family CARDBUS
ltr ecn no dr date	tolerances unless otherwise specified			title CARDBUS NONE PUSH ROD, TYPE 1/2/3
H	angles linear ± 0.30	±2'	scale 1:2:1	dwg no 52599
dr	Mike Zhou 08/18/06	engr	Mike Zhou 08/18/06	sheet 2 of 5 size A4
chr	Mike Zhou 08/18/06	appd	Qin David 08/18/06	type CUSTOMER Drawing

sheet index	revision sheet																		
-------------	----------------	--	--	--	--	--	--	--	--	--	--	--	--	--	--	--	--	--	--

FCI CONFIDENTIAL

FCI CONFIDENTIAL

PRODUCT NO.
52599-043
52599-050
52599-043LF
52599-050LF



DETAIL A

4 CARD INSERTION DIRECTION

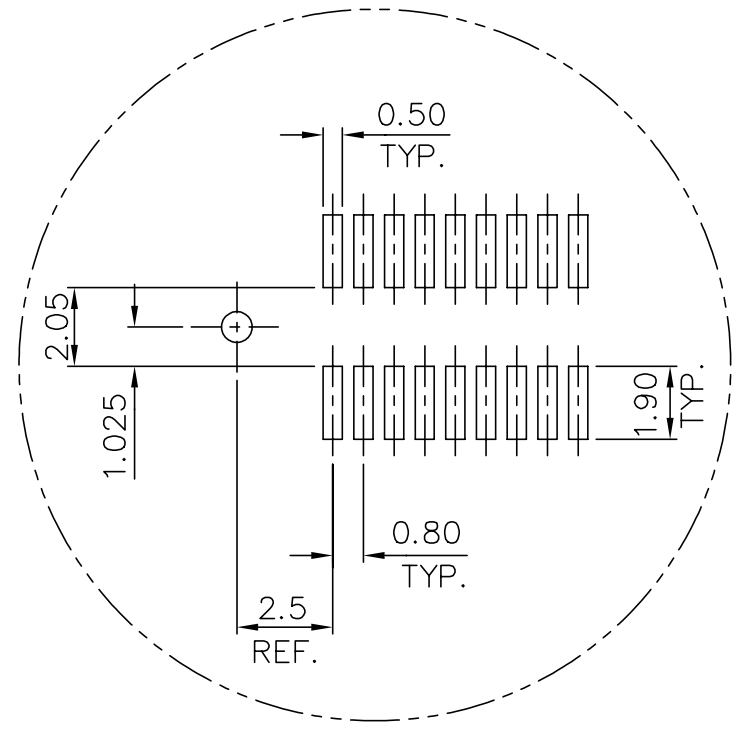
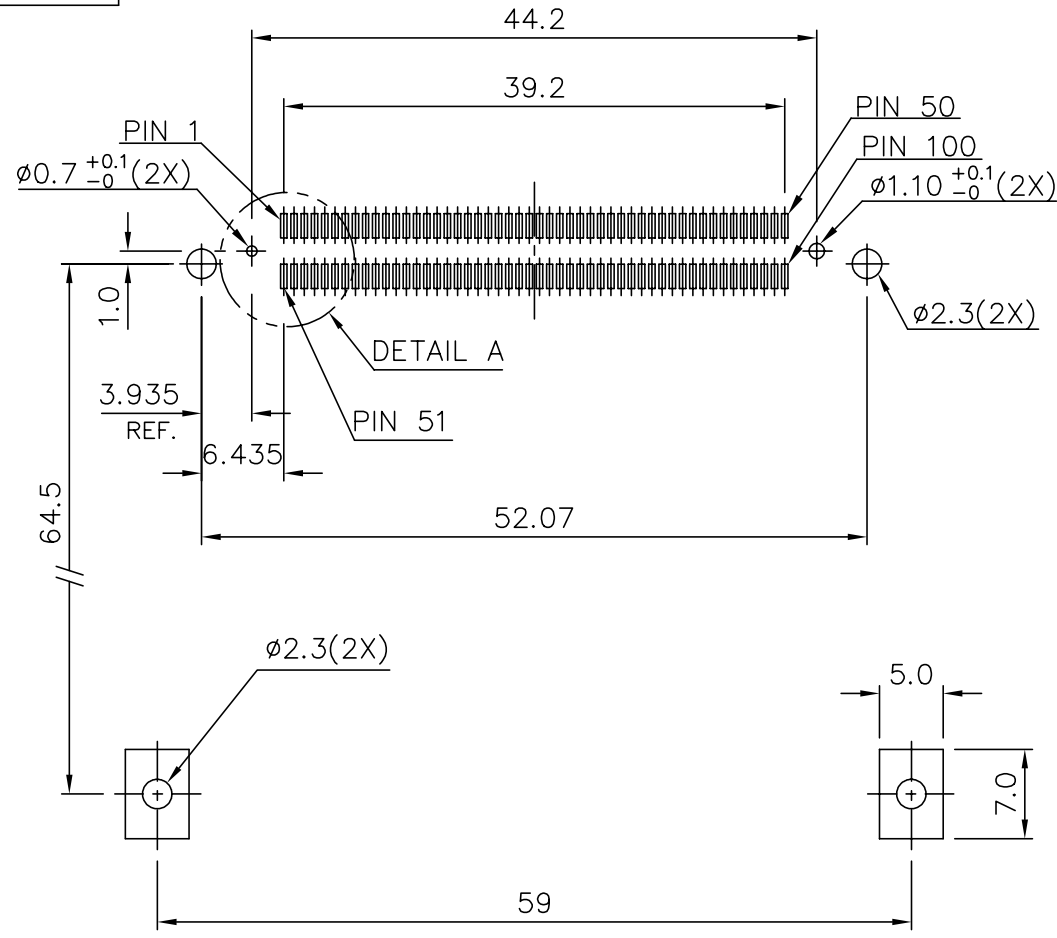
mat'l. code		surface		tolerance		projection		product family	
		ISO 1302		ISO 406 ISO 1181		1:1		CARDBUS	
trn		ecn		nadr		date		tolerances unless otherwise specified	
H				angles		linear ± 0.10		MM	
				±2'				scale 1.5:1	
		dr		Mike Zhou		08/18/06		CARDBUS NONE PUSH ROD, TYPE 1/2/3	
		engr		Mike Zhou		08/18/06		dwg no	
		chr		Mike Zhou		08/18/06		sheet 3 of 5	
		appd		Qin David		08/18/06		52599	
								A4	
								type CUSTOMER Drawing	
sheet index		revision sheet							

A B C D

FCI CONFIDENTIAL

FCI CONFIDENTIAL

PRODUCT NO.
52599-022
52599-022LF



DETAIL A

4 CARD INSERTION DIRECTION

mat'l. code	surface ISO 1302	tolerance ISO 406 ISO 1101	projection 1:1	product family CARDBUS
tr	ecn	no	dr	date
tolerances unless otherwise specified				title
H	angles	linear	± 0.10	MM
	$\pm 2'$			scale 1.5:1
dr	Mike Zhou	08/18/06		
engr	Mike Zhou	08/18/06		
chr	Mike Zhou	08/18/06		
appd	Qin David	08/18/06		
dwg no			sheet 4 of 5	size
52599				A4
type			CUSTOMER	Drawing

sheet index	revision sheet																		
-------------	----------------	--	--	--	--	--	--	--	--	--	--	--	--	--	--	--	--	--	--

This document is the property of and embodies CONFIDENTIAL PROPRIETARY information of FCI. No part of this information shall be disclosed, copied, reproduced, or used in any way or disclosed to others without the written consent of FCI. Copyright FCI.

