



Chipsmall Limited consists of a professional team with an average of over 10 year of expertise in the distribution of electronic components. Based in Hongkong, we have already established firm and mutual-benefit business relationships with customers from,Europe,America and south Asia,supplying obsolete and hard-to-find components to meet their specific needs.

With the principle of “Quality Parts,Customers Priority,Honest Operation,and Considerate Service”,our business mainly focus on the distribution of electronic components. Line cards we deal with include Microchip,ALPS,ROHM,Xilinx,Pulse,ON,Everlight and Freescale. Main products comprise IC,Modules,Potentiometer,IC Socket,Relay,Connector.Our parts cover such applications as commercial,industrial, and automotives areas.

We are looking forward to setting up business relationship with you and hope to provide you with the best service and solution. Let us make a better world for our industry!



Contact us

Tel: +86-755-8981 8866 Fax: +86-755-8427 6832

Email & Skype: info@chipsmall.com Web: www.chipsmall.com

Address: A1208, Overseas Decoration Building, #122 Zhenhua RD., Futian, Shenzhen, China



PRODUCT NUMBER

5 2 6 0 1 - X X X - X X X X X LF

PLATING $S=15\mu$ [0.38 μ m]GOLD ON CONTACT AREA (NOTE 13)
 100μ [2.54 μ m]TIN ON TAIL

$G=30\mu$ [0.76 μ m]GOLD ON CONTACT AREA (NOTE 13)
 100μ [2.54 μ m]TIN ON TAIL

LEAD FREE OPTION NOTE 10,11,12

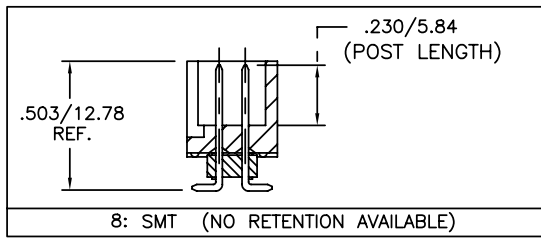
PACKAGE NOTE 5

RETENTION R= RETENTIVE LEG (NOTE 6)

POLARIZATION NOTE 9

TAIL	
1	.090/2.29
2	.112/2.84
4	.120/3.05
6	.150/3.81
7	.675/17.15
8	SMT

TOTAL POSITIONS	HDR. STYLE
10	2 x 5 B
14	2 x 7 C
16	2 x 8 D
20	2 x 10 D
26	2 x 13 D
30	2 x 15 D
34	2 x 17 D
40	2 x 20 D
44	2 x 22 D
50	2 x 25 D
60	2 x 30 D



NOTES:

- HOUSING MAT'L: HIGH TEMPERATURE THERMOPLASTIC. UL94V-0 COLOR: BLACK OR MINERAL FILLED LCP FLAME RETARDANT PER UL-94V-0. COLOR: BLACK.
- PIN MATERIAL: PHOSPHOR-BRONZE
- TO DETERMINE DIMENSIONS:
 $N = \text{NUMBER OF POSITIONS PER ROW}$
 EXAMPLE: 10 POS., $(N-1) \times .100[2.54] = .900[22.86]$
- 3 LBS./1.36 KG MIN. RETENTION
- PACKAGED IN TRAYS,
 PART NUMBER FOLLOWS BY "T" SUFFIX ARE PACKAGED TAPE ON REEL WITH PACK-UP INSTALLED. VACUUM CAP TO BE CENTRALLY LOCATED REGARDLESS OF NUMBER OF POSITIONS (SHEET 3)
- RETENTIVE LEG APPLICABLE TO TAIL LENGTHS .125/3.18 MAX. 5LB/2.3KG MAX INSERTION FORCE AND .25LB./1KG MIN RETENTION FORCE PER RETENTIVE PIN USING .062/1.57 THICK CIRCUIT BOARD AND RECOMMENDED HOLE PATTERN. RETENTIVE LOCATION AT THE DISCRETION OF THE MANUFACTURER. RETENTION PIN MAY BE SHIFTED TO NEXT POSITION.
- OMIT FROM PRODUCT NUMBER IF THIS FEATURE IS NOT APPLICABLE.
- UNDERPLATING: 50μ /1.27 μ m Ni.
- FOR POLARIZATION SPECIFY POSITION NUMBER (i.e. 03 = PIN 3) TO OMIT PIN. OMIT FROM PRODUCT NUMBER IF THIS FEATURE IS NOT APPLICABLE.
- ADD "LF" SUFFIX AT THE END OF PART NUMBER FOR LEAD FREE OPTION.
- THE HOUSING WILL WITHSTAND EXPOSURE TO 260°C PEAK TEMPERATURE FOR 15 SECONDS IN A WAVE SOLDER APPLICATION WITH A 1.5mm MINIMUM THICK CIRCUIT BOARD. SEE APPLICATION NOTES/PROCEDURES IF THEY ARE AVAILABLE.
 THE HOUSING WILL WITHSTAND EXPOSURE TO 260°C PEAK TEMPERATURE FOR 20 SECONDS IN A CONVECTION, INFRA-RED OR VAPOR PHASE REFLOW OVEN. SEE APPLICATION NOTES/PROCEDURES IF THEY ARE AVAILABLE.
- THIS PRODUCT MEETS EUROPEAN UNION DIRECTIVES AND OTHER COUNTRY REGULATION AS DESCRIBED IN GS-22-008.
- PLATING OPTIONS:
 MAY BE EITHER GOLD OR GXT PLATED AT MANUFACTURER'S OPTION.



Copyright FCI.

rev	ecn no	dr	date
S	M08-0117	MHT	04/22/08
T	M08-0118	MHT	04/24/08
U	M08-0237	MHT	05/25/08
V	M08-0261	MHT	08/19/08
W	N08-0279	MHT	09/30/08
X	N10-0327	A.ZH	11/04/10

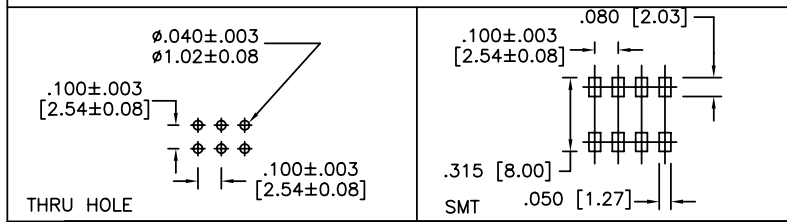
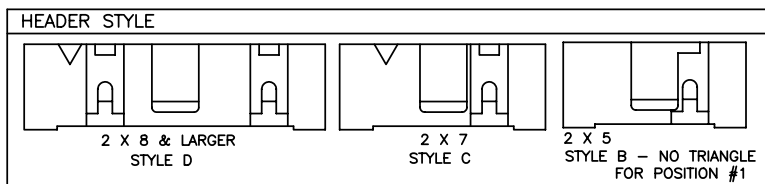
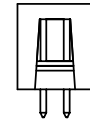
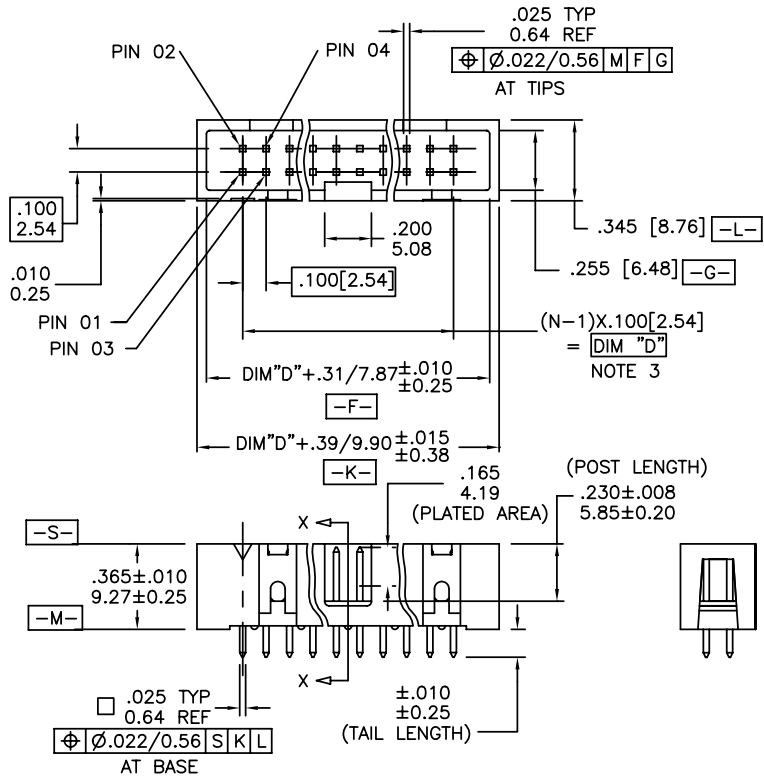
www.fciconnect.com		surface ISO 1302	tolerance ISO 406 ISO 1101	projection	MM
		TOLERANCES UNLESS OTHERWISE SPECIFIED			
Dr	D.INGRAM	07/07/99	ANGULAR	size A4	Scale 1:1
Eng	L.GREEN	07/12/99	LINEAR	ECN	N10-0327
Chr	L.GREEN	07/12/99	0° ±2.0°	Spec ref	
Appr	L.GREEN	07/21/99	Product family	QUICKIE	
		title 0.100/2.54MM LOW PROFILE SHROUDED VERTICAL HEADER		dwg 52601	Rev. X
		catalog no	CUSTOMER	sheet 1 of 3	

A

B

C

D



RECOMMENDED BOARD LAYOUT

www.fciconnect.com			surface ISO 1302	tolerance ISO 406 ISO 1101	projection MM	
			TOLERANCES UNLESS OTHERWISE SPECIFIED			
Dr	D.INGRAM	07/07/99	ANGULAR	0.X	± 0.30	
Eng	L.GREEN	07/12/99		LINEAR	0.XX	± 0.13
Chr	L.GREEN	07/12/99	0°	±2.0°	0.XXX	± 0.05
Appr	L.GREEN	07/21/99	Product family		QUICKIE	Spec ref
FCJ			title		0.100/2.54MM LOW PROFILE SHROUDED VERTICAL HEADER	Rev. X
			catalog no		CUSTOMER	sheet 2 of 3



Copyright FCI.

1

2

3

4

PRODUCT No. NOTE 10	NO. OF POSITIONS	HSG. STYLE	POLARIZED POSITION	PACKAGING	POCKET PITCH	DIM M	DIM N
52601-S10-801T	2 X 5	B	01	TAPE-ON-REEL	0.787/20.00	1.260/32.00	0.790/20.07
52601-S10-805T	2 X 5	B	05	TAPE-ON-REEL	0.787/20.00	1.260/32.00	0.790/20.07
52601-S10-807T	2 X 5	B	07	TAPE-ON-REEL	0.787/20.00	1.260/32.00	0.790/20.07
52601-S14-807T	2 X 7	C	07	TAPE-ON-REEL	0.787/20.00	1.732/44.00	1.090/27.69
52601-S14-80714T	2 X 7	C	07,14	TAPE-ON-REEL	0.787/20.00	1.732/44.00	1.090/27.69
52601-X16-8T	2 X 8	D	-	TAPE-ON-REEL	0.787/20.00	1.732/44.00	1.090/27.69
52601-X20-8T	2 X 10	D	-	TAPE-ON-REEL	0.787/20.00	2.204/56.00	1.290/32.77
52601-X30-8T	2 X 15	D	-	TAPE-ON-REEL	0.787/20.00	2.834/72.00	1.786/45.37
52601-X40-8T	2 X 20	D	-	TAPE-ON-REEL	0.787/20.00	3.465/88.00	2.293/58.25

* SPECIAL CUSTOMER

A

A

B

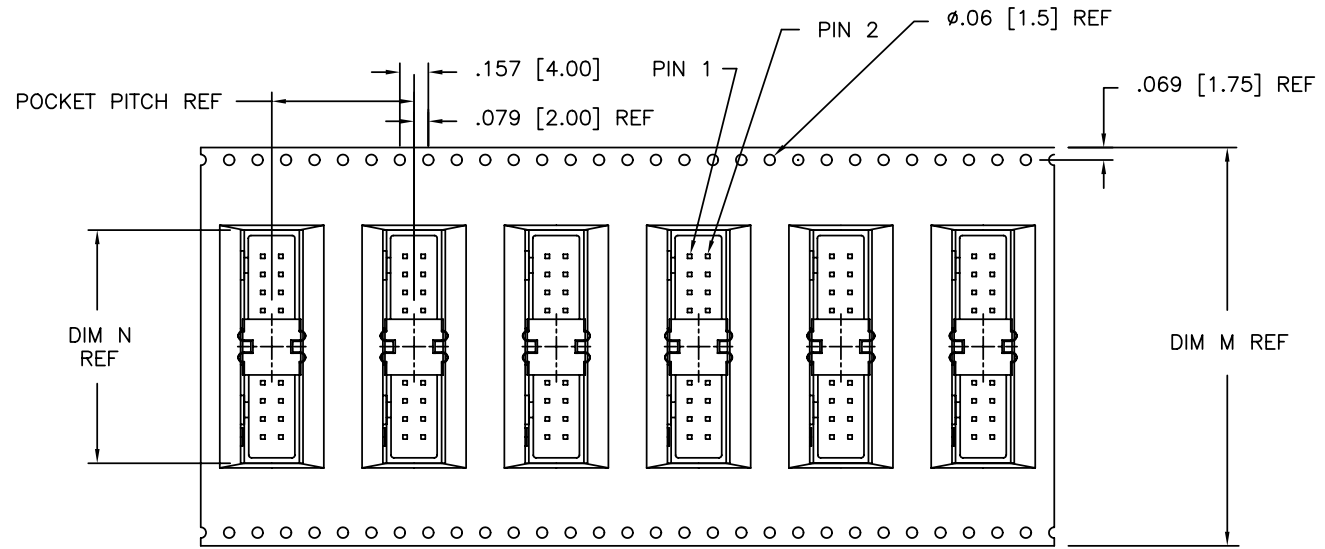
B

C

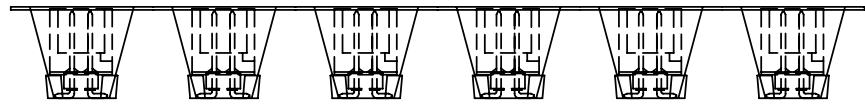
C

D

D



UN-REELING DIRECTION OF FEED →



Copyright FCI.

www.fciconnect.com		surface ISO 1302	tolerance ISO 406 ISO 1101	projection MM
		TOLERANCES UNLESS OTHERWISE SPECIFIED		↔
Dr	D.INGRAM	07/07/99	ANGULAR	size A4
Eng	L.GREEN	07/12/99	LINEAR	Scale 1:1
Chr	L.GREEN	07/12/99	0° ±2.0°	ECN N10-0327
Appr	L.GREEN	07/21/99	Product family	QUICKIE
title		0.100/2.54MM LOW PROFILE SHROUDED VERTICAL HEADER		Rev. X
catalog no		CUSTOMER		sheet 3 of 3
		dwg no	52601	
		Spec ref		

REV F - 2006-04-17

1

2

3 PDM: Rev:X

STATUS Released

4 Printed: Apr 12, 2011