



Chipsmall Limited consists of a professional team with an average of over 10 year of expertise in the distribution of electronic components. Based in Hongkong, we have already established firm and mutual-benefit business relationships with customers from,Europe,America and south Asia,supplying obsolete and hard-to-find components to meet their specific needs.

With the principle of “Quality Parts,Customers Priority,Honest Operation,and Considerate Service”,our business mainly focus on the distribution of electronic components. Line cards we deal with include Microchip,ALPS,ROHM,Xilinx,Pulse,ON,Everlight and Freescale. Main products comprise IC,Modules,Potentiometer,IC Socket,Relay,Connector.Our parts cover such applications as commercial,industrial, and automotives areas.

We are looking forward to setting up business relationship with you and hope to provide you with the best service and solution. Let us make a better world for our industry!



Contact us

Tel: +86-755-8981 8866 Fax: +86-755-8427 6832

Email & Skype: info@chipsmall.com Web: www.chipsmall.com

Address: A1208, Overseas Decoration Building, #122 Zhenhua RD., Futian, Shenzhen, China



DWG. NO. SD-52660-1051

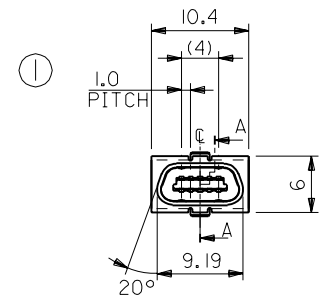
E

D

C
B
A
DIMENSIONS IN METRIC DO NOT SCALE DRAWING

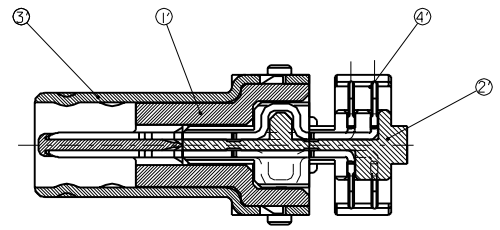
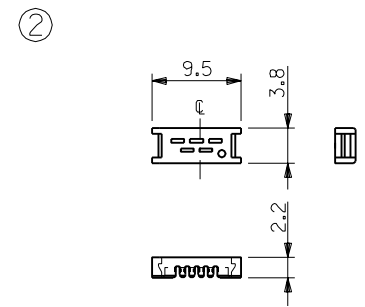
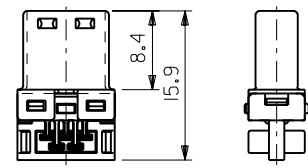
MM

番号 NO.	部品名 PART NAME	個数 QUAN.	材質 MATERIAL	仕上げ FINISH
①	プラグハウジング アッセンブリ PLUG HUSING ASSEMBLY	1	ハウジング HOUSING	ガラス入りPBT G.F. PBT
			インナーハウジング INNER HOUSING	ガラス入りPBT G.F. PBT
			シールド SHIELD	鋼 STEEL
			ターミナル TRMINAL	リン青銅 PHOS. BRO.
②	アッパーハウジング UPPER HOUSING	2	ガラス入りPBT G.F. PBT	—



1. 適用電線 :
APPLICABLE WIRE

心数	サイズ SIZE	導体 WIRE RANGE	絶縁体外径 INS. RANGE	編組シールド外径 SHIELD RANGE	ジャケット外径 JACKET RANGE
10	28	0.38 (7/0.127)	0.58	3.0	5.0



A-A
(SCALE:5-1)

材料 MATERIAL				—		MOLEX-JAPAN CO.,LTD. 日本モレックス株式会社
仕上げ FINISH				—		
適用電線範囲 WIRE RANGE				—		TITLE 名称
被覆外径 INS. RANGE				—		1.0 mm PITCH I/O PLUG ASS'Y
DRAWN BY I.LODA		CHK'D BY S. I.		19/02/09		DWG. NO.
DATE		DATE		SCALE		REV
APP'D BY		DATE		SCALE		0
2-1						

角度 ANGLE	公差 TOLERANCES
30°	+3°
30以上 OVER	+0.3
10以上 30未満 OVER UNDER	+0.25
10未満 UNDER	+0.2

THIS DRAWING CONTAINS INFORMATION THAT IS PROPRIETARY TO MOLEX(JAPAN) AND SHOULD NOT BE USED WITHOUT WRITTEN PERMISSION
本図面は日本モレックス(株)の所有する情報を含むもので 当社の許可なく複製を禁止する。 EN-01(C032)MXJ-32