



Chipsmall Limited consists of a professional team with an average of over 10 year of expertise in the distribution of electronic components. Based in Hongkong, we have already established firm and mutual-benefit business relationships with customers from,Europe,America and south Asia,supplying obsolete and hard-to-find components to meet their specific needs.

With the principle of “Quality Parts,Customers Priority,Honest Operation,and Considerate Service”,our business mainly focus on the distribution of electronic components. Line cards we deal with include Microchip,ALPS,ROHM,Xilinx,Pulse,ON,Everlight and Freescale. Main products comprise IC,Modules,Potentiometer,IC Socket,Relay,Connector.Our parts cover such applications as commercial,industrial, and automotives areas.

We are looking forward to setting up business relationship with you and hope to provide you with the best service and solution. Let us make a better world for our industry!



Contact us

Tel: +86-755-8981 8866 Fax: +86-755-8427 6832

Email & Skype: info@chipsmall.com Web: www.chipsmall.com

Address: A1208, Overseas Decoration Building, #122 Zhenhua RD., Futian, Shenzhen, China





BOARD LEVEL COOLING – Extruded 5290

Extruded 5290 is a series of dual radial board level heat sinks designed to cool TO-218, TO-220, and TO-247 devices. Representative image only.

ORDERING INFORMATION

Part Number	Device Type
529701B02100G	TO-218, TO-247
529701B02500G	TO-218
529702B02500G	TO-220
529801B02500G	TO-218
529802B02500G	TO-220
529901B02100G	TO-218
529901B02500G	TO-218
529902B02100G	TO-220
529902B02500G	TO-220
530001B02100G	TO-218
530001B02500G	TO-218
530002B00000G	TO-220
530002B02500G	TO-220



HEAT SINK DETAILS

Property	Details
Material	Aluminum
Finishing	Black Anodize
Device Attachment Options	Requires Mounting Kit
Thermal Interface Material	-

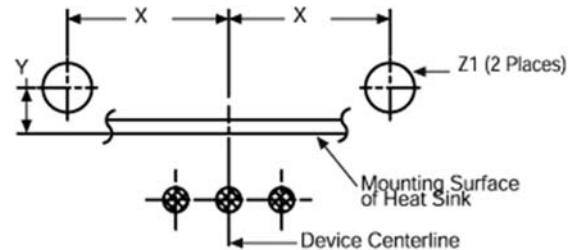
Property	Details
Heat Sink Width (mm)	41.91
Heat Sink Length (mm)	25.40
Heat Sink Height (mm)	See "A" Dim below
Heat Sink Mounting Direction	Vertical

MECHANICAL & PERFORMANCE

Drawing dimensions are shown in mm, (in)

Part Number	"A" Dim	"B" Dim	"C" Dim
529701B02100G	25.40	-	-
529701B02500G	25.40	21.59	3.66
529702B02500G	25.40	18.29	3.17
529801B02500G	38.10	21.59	3.66
529802B02500G	38.10	18.29	3.17
529901B02100G	50.80	-	-
529901B02500G	50.80	21.59	3.66
529902B02100G	50.80	18.29	3.18
529902B02500G	50.80	18.29	3.17
530001B02100G	63.50	-	-
530001B02500G	63.50	21.59	3.66
530002B00000G	63.50	-	-
530002B02500G	63.50	18.29	3.17

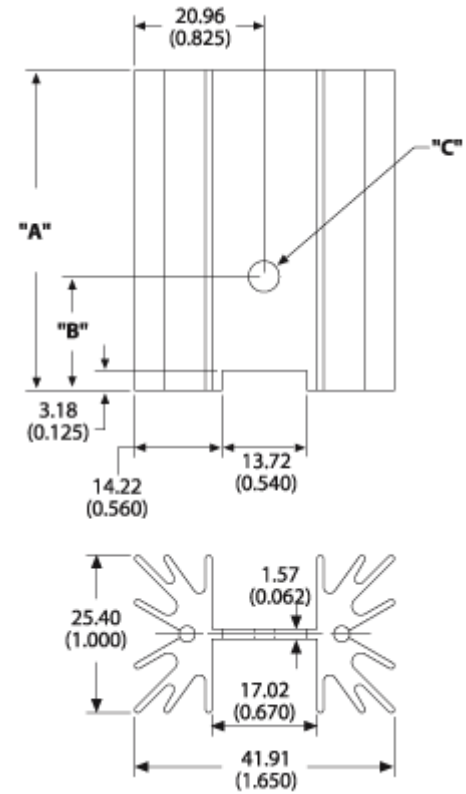
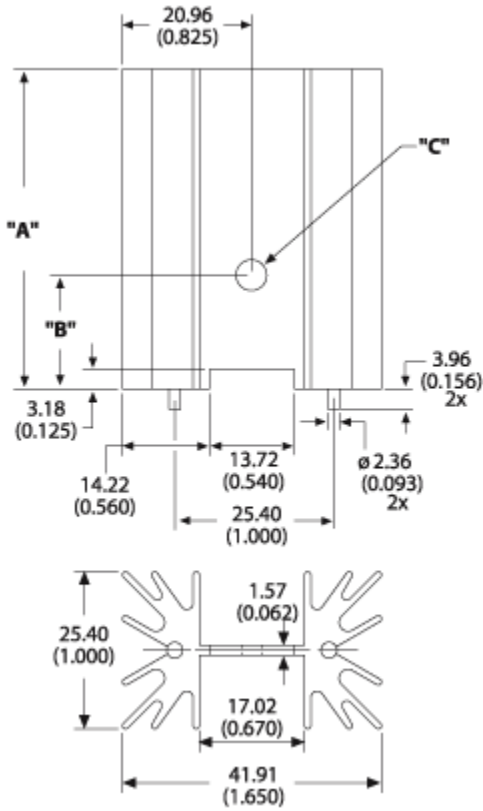
Property	Details
"X" Dim	12.70 (0.500)
"Y" Dim	0.79 (0.031)
"Z" Dim	2.67 (0.105)



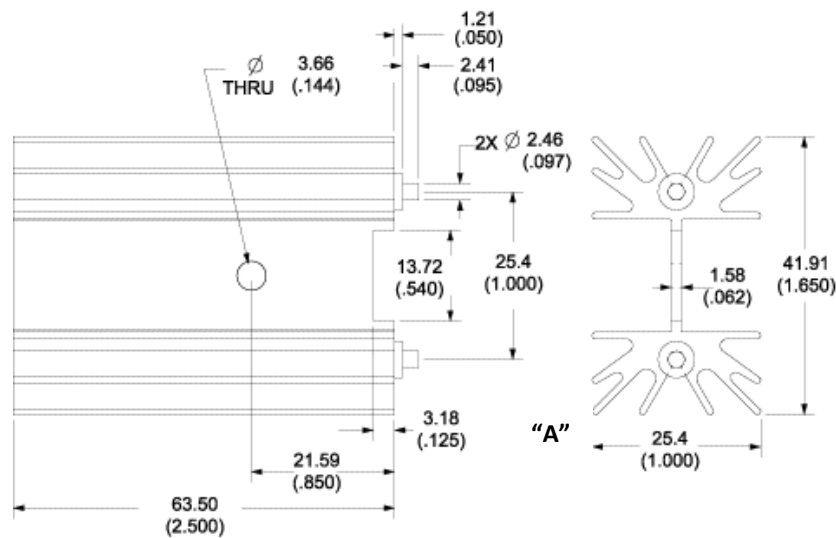
Board Level Cooling – Extruded 5290

Part Number: 529701B02500G, 529702B02500G,
529801B02500G, 529802B02500G, 529901B02500G,
529902B02500G, 530001B02500G, 530002B02500G

Part Number: 530002B00000G



Part Number: 529701B02100G, 529901B02100G,
529902B02100G, 530001B02100G



Board Level Cooling – Extruded 5290

